

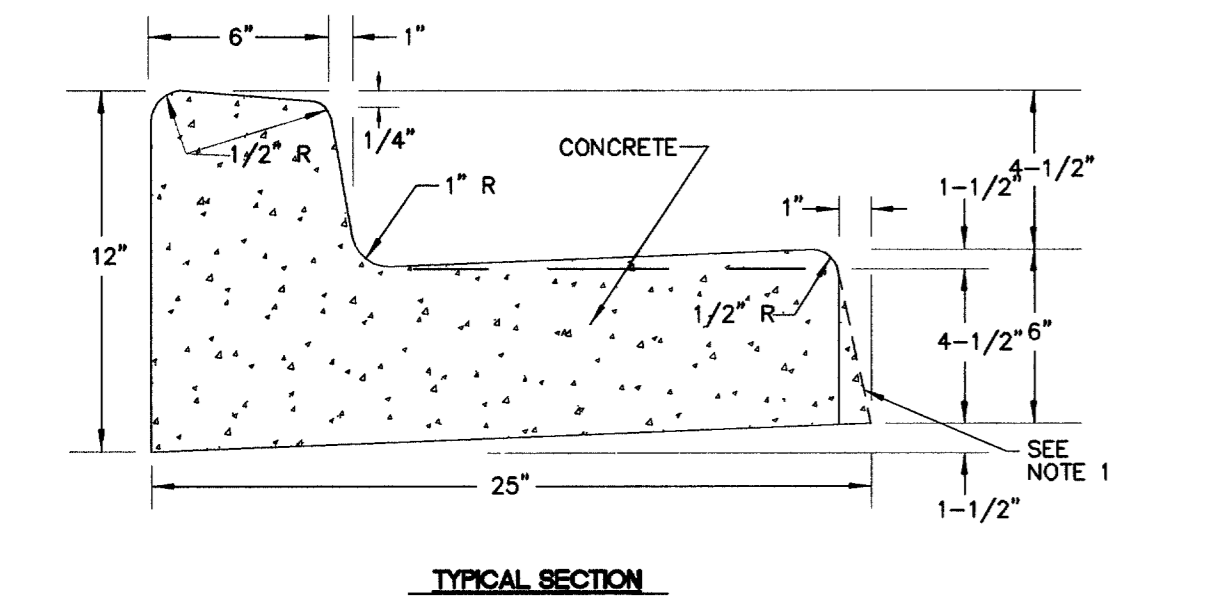
PLAN

1/2" EXPANSION JOINT AT ALL COLD JOINTS, AT BEGINNING AND END OF RETURN AND AT 300' MAX. INTERVALS FOR EXTRUDED CURB AND 30' MAX. INTERVALS FOR FORMED CURB. FOR JOINT DETAIL SEE STANDARD DRAWING NUMBER 234

NOTES

1. 1" BATTER ON GUTTER FACE OPTIONAL.

2. WHERE LONGITUDINAL SLOPE IS LESS THAN 0.4%, THE FLOW LINE SHALL BE WATER TESTED.



TYPICAL SECTION

WEAKENED PLANE JOINTS SEE STANDARD DRAWING NUMBER 234

NOTES

1. CONTINUOUS NO. 4 BAR REQUIRED IN NOSE OF MEDIAN ONLY.

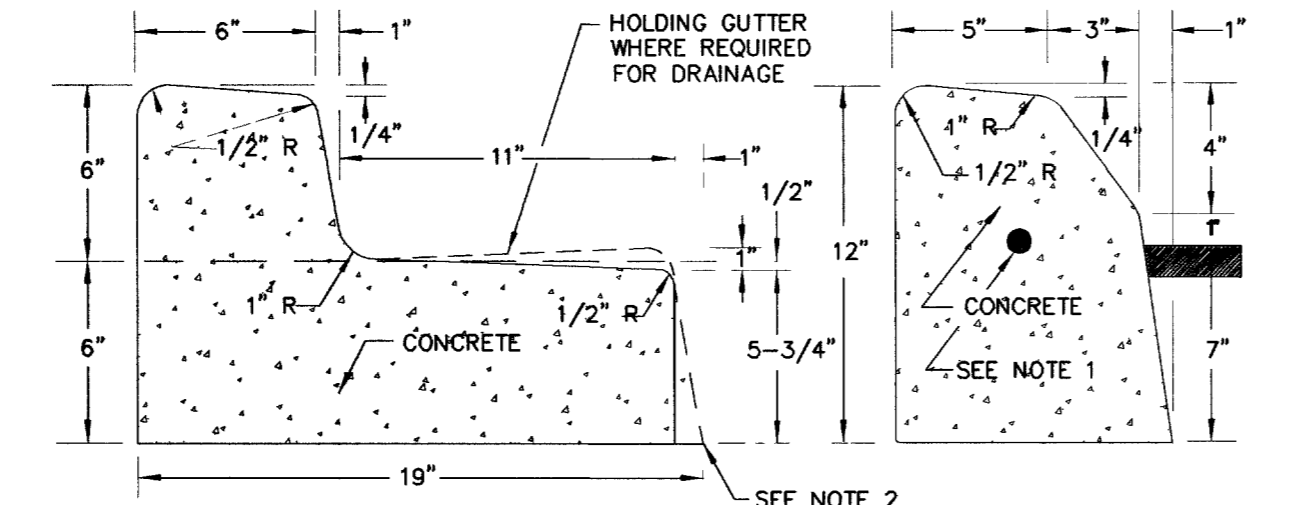
2. 1" BATTER ON GUTTER FACE OPTIONAL.

CONTRACTOR IS RESPONSIBLE TO REVIEW THE LATEST UNIFORM STANDARD DRAWINGS, CLARK COUNTY AREA, WHICH SUPERSEDE THESE DETAILS OR ANY DETAILS SHOWN IN THIS PLAN SET.

SPECIFICATION REFERENCE	UNIFORM STANDARD DRAWINGS CLARK COUNTY AREA
501	CONCRETE
502	CONCRETE STRUCTURES
707	JOINT MATERIAL

'L' TYPE CURB AND GUTTER

DATE 12-14-00 DWG. NO. 218 PAGE NO. 22

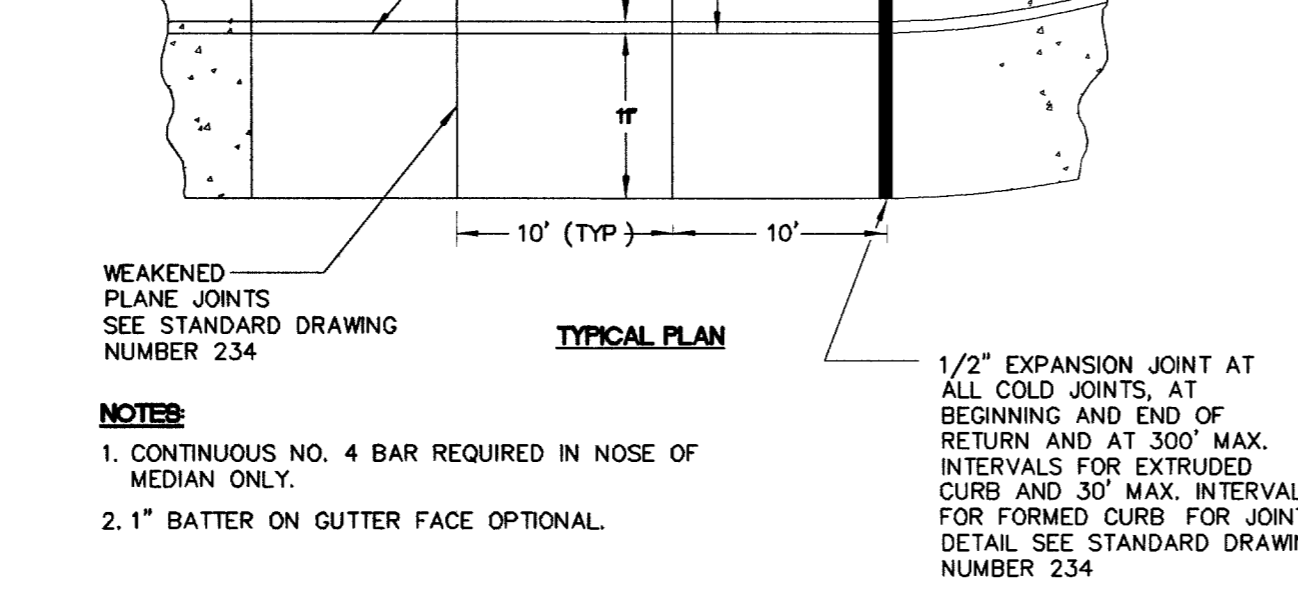


L CURB SECTION

A CURB SECTION

CONCRETE

SEE NOTE 2



TYPICAL PLAN

WEAKENED PLANE JOINTS SEE STANDARD DRAWING NUMBER 234

NOTES

1. CONTINUOUS NO. 4 BAR REQUIRED IN NOSE OF MEDIAN ONLY.

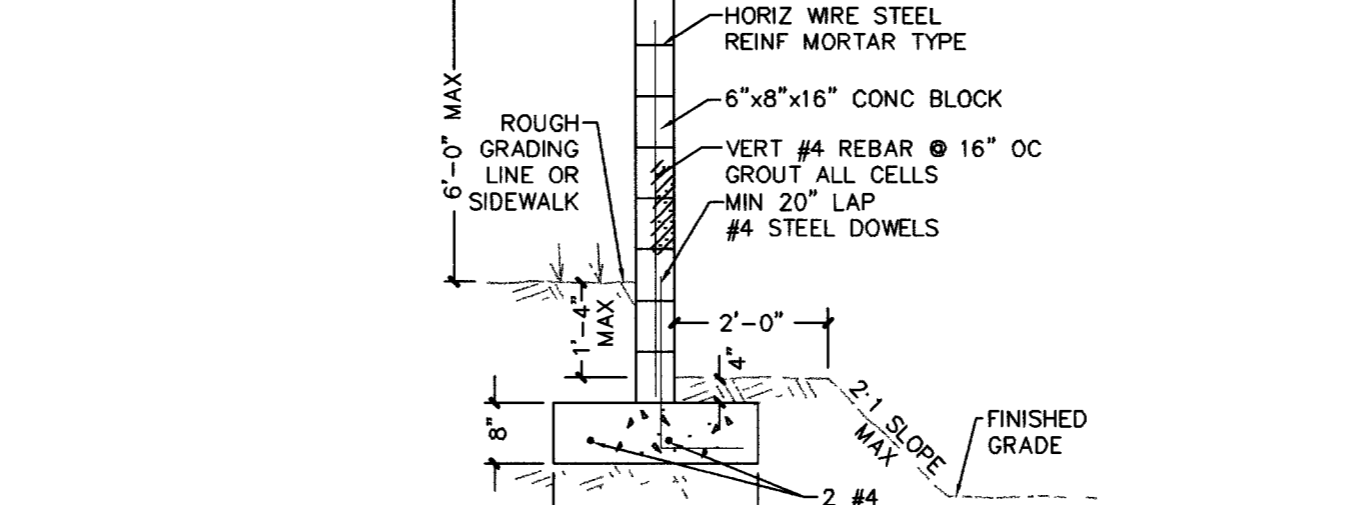
2. 1" BATTER ON GUTTER FACE OPTIONAL.

CONTRACTOR IS RESPONSIBLE TO REVIEW THE LATEST UNIFORM STANDARD DRAWINGS, CLARK COUNTY AREA, WHICH SUPERSEDE THESE DETAILS OR ANY DETAILS SHOWN IN THIS PLAN SET.

SPECIFICATION REFERENCE	UNIFORM STANDARD DRAWINGS CLARK COUNTY AREA
302	AGGREGATE BASE COURSE
501	CONCRETE
707	JOINT MATERIAL

'A' AND 'L' TYPE ISLAND CURB

DATE 12-14-00 DWG. NO. 219 PAGE NO. 25



TYPICAL WALL SECTIONS

CONSTRUCT PILASTERS @ 25' OC 10"x16" H BLOCK W/2-#4 VERT BARS

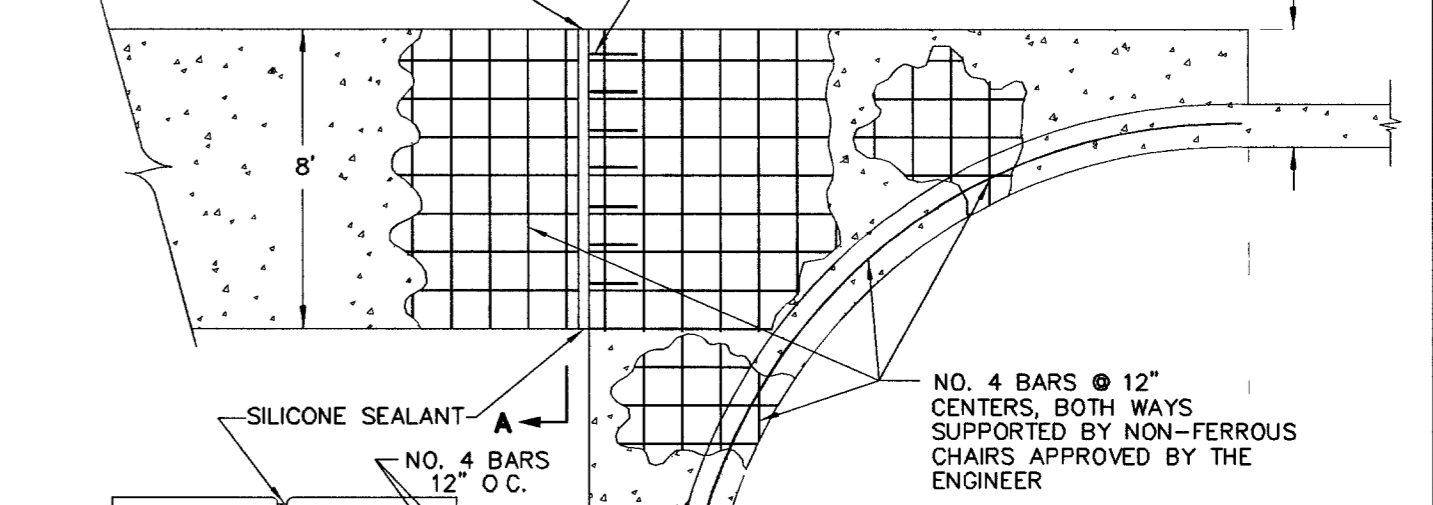
CONSTRUCT PILASTERS @ 25' OC 10"x16" H BLOCK W/2-#4 VERT BARS

CONTRACTOR IS RESPONSIBLE TO REVIEW THE LATEST UNIFORM STANDARD DRAWINGS, CLARK COUNTY AREA, WHICH SUPERSEDE THESE DETAILS OR ANY DETAILS SHOWN IN THIS PLAN SET.

SPECIFICATION REFERENCE	UNIFORM STANDARD DRAWINGS CLARK COUNTY AREA
302	AGGREGATE BASE
501	CONCRETE
502	CONCRETE STRUCTURES
505	REINFORCING STEEL
707	EXPANSION JOINT MATERIAL

CROSS GUTTER

DATE 12-14-00 DWG. NO. 228 PAGE NO. 34



PLAN

JOINT DETAIL

SEALANT DETAIL

SECTION A-A

TYPICAL PROFILE AT LOCAL RESIDENTIAL STREET INTERSECTIONS

NOTES

1. FINISHED ASPHALT CONCRETE SURFACE TO BE FLUSH WITH CROSS GUTTER LIP.

2. CONSTRUCTION OF CROSS GUTTER IS NOT ALLOWED ACROSS MAJOR COLLECTOR OR ARTERIAL STREETS.

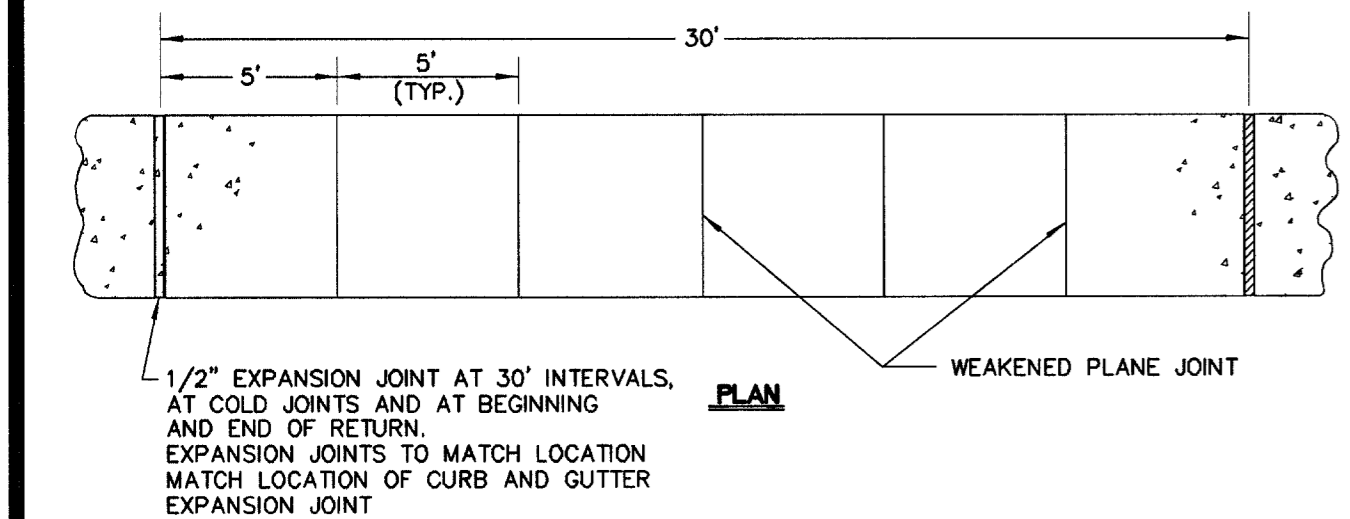
3. ADJACENT SPANDREL SHALL BE 9" THICK P.C.C.

CONTRACTOR IS RESPONSIBLE TO REVIEW THE LATEST UNIFORM STANDARD DRAWINGS, CLARK COUNTY AREA, WHICH SUPERSEDE THESE DETAILS OR ANY DETAILS SHOWN IN THIS PLAN SET.

SPECIFICATION REFERENCE	UNIFORM STANDARD DRAWINGS CLARK COUNTY AREA
302	AGGREGATE BASE
501	CONCRETE
502	CONCRETE STRUCTURES
505	REINFORCING STEEL
707	EXPANSION JOINT MATERIAL

CROSS GUTTER

DATE 12-14-00 DWG. NO. 228 PAGE NO. 34

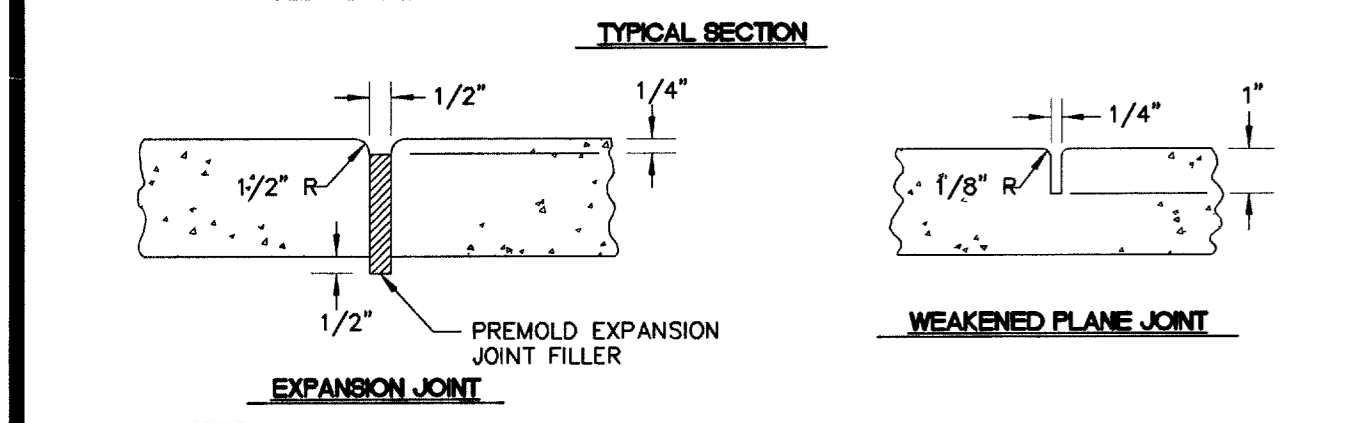


PLAN

WEAKENED PLANE JOINT

1/2" EXPANSION JOINT AT 30' INTERVALS, AT COLD JOINTS AND AT BEGINNING AND END OF RETURN.

EXPANSION JOINTS TO MATCH LOCATION MATCH LOCATION OF CURB AND GUTTER EXPANSION JOINT



TYPICAL SECTION

WEAKENED PLANE JOINT

EXPANSION JOINT

NOTES

1. ON ALL CURB RETURNS A 1/2" EXPANSION JOINT SHALL BE CONSTRUCTED BETWEEN THE BACK OF CURB AND THE SIDEWALK FOR THE ENTIRE LENGTH OF THE RETURN.

2. THE TYPE II AGGREGATE BASE THICKNESS IS SHOWN ON THE TYPICAL SECTION DRAWINGS 202 - 207.

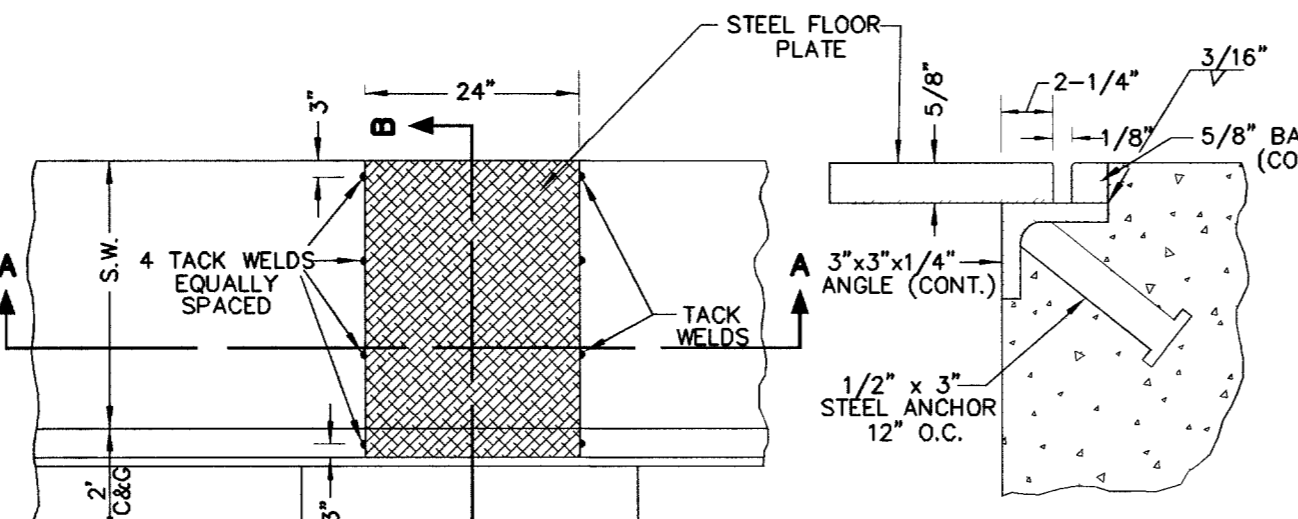
3. LONGITUDINAL WEAKENED PLANE JOINT REQUIRED AT MIDPOINT OF SIDEWALK 10' OR WIDER.

CONTRACTOR IS RESPONSIBLE TO REVIEW THE LATEST UNIFORM STANDARD DRAWINGS, CLARK COUNTY AREA, WHICH SUPERSEDE THESE DETAILS OR ANY DETAILS SHOWN IN THIS PLAN SET.

SPECIFICATION REFERENCE	UNIFORM STANDARD DRAWINGS CLARK COUNTY AREA
302	AGGREGATE BASE
501	CONCRETE
502	CONCRETE STRUCTURES
707	JOINT MATERIAL

SIDEWALK

DATE 12-14-00 DWG. NO. 234 PAGE NO. 40



PLAN

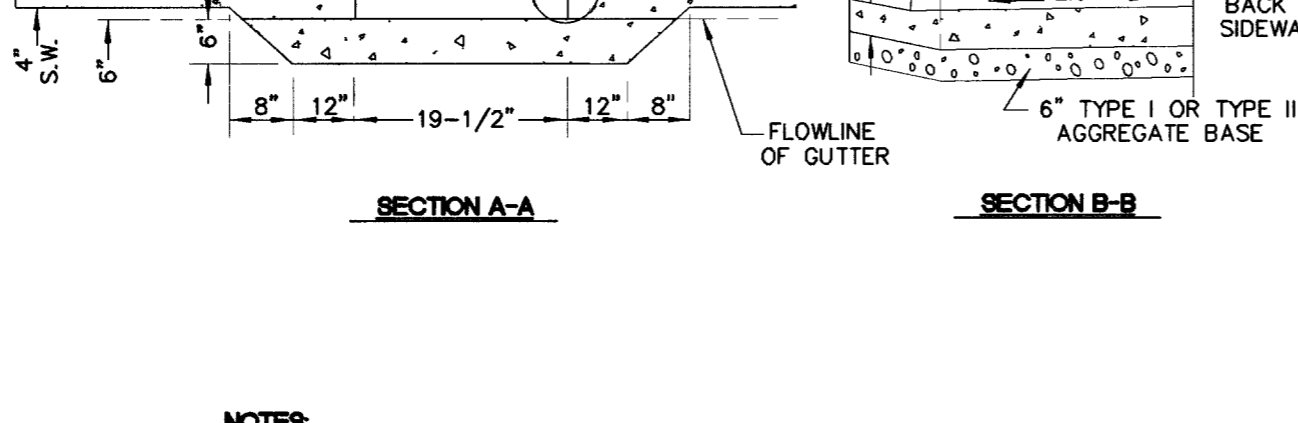
DETAIL T

STEEL FLOOR PLATE

4 TACK WELDS EQUALLY SPACED

3"x3"x1/4" ANGLE (CONT.)

1/2" x 3" STEEL ANCHOR 12" O.C.



SECTION A-A

SECTION B-B

NOTES

1. IF WIDTH OF PLATE IS GREATER THAN 24", A SPECIAL DESIGN IS REQUIRED

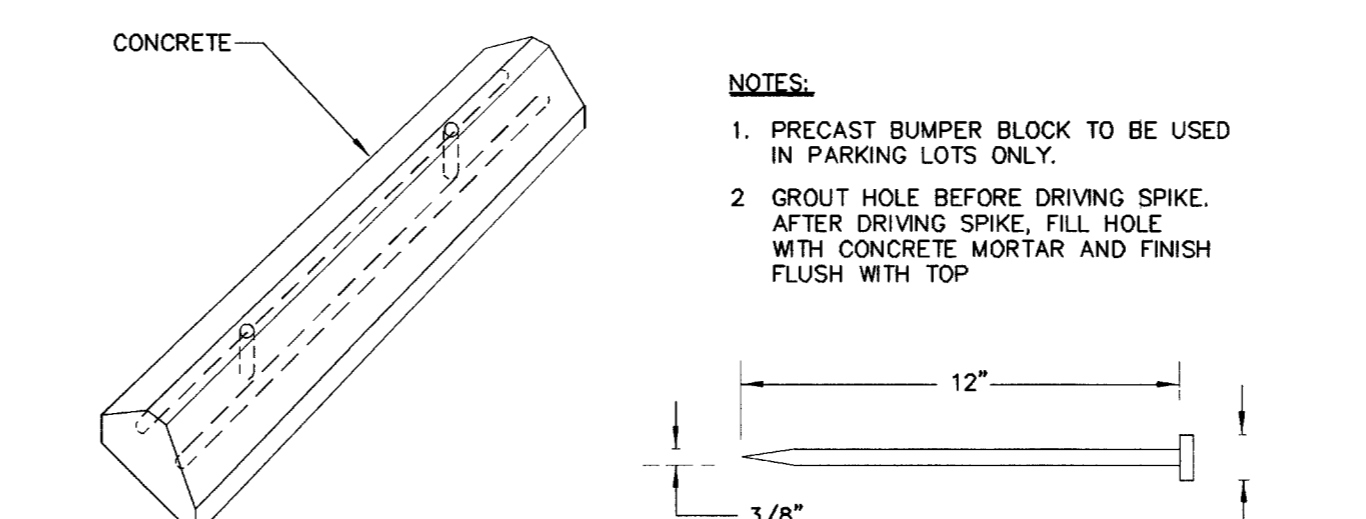
2. ALL EXPOSED METAL PARTS SHALL BE GALVANIZED AND ALL GALVANIZING DAMAGED BY FABRICATION OR INSTALLATION SHALL RECEIVE TWO COATS OF ALUMINUM PAINT (GALVONOX OR EQUAL).

CONTRACTOR IS RESPONSIBLE TO REVIEW THE LATEST UNIFORM STANDARD DRAWINGS, CLARK COUNTY AREA, WHICH SUPERSEDE THESE DETAILS OR ANY DETAILS SHOWN IN THIS PLAN SET.

SPECIFICATION REFERENCE	UNIFORM STANDARD DRAWINGS CLARK COUNTY AREA
302	BASE AGGREGATES
501	CONCRETE
710	STRUCTURAL STEEL

SIDEWALK DRAIN

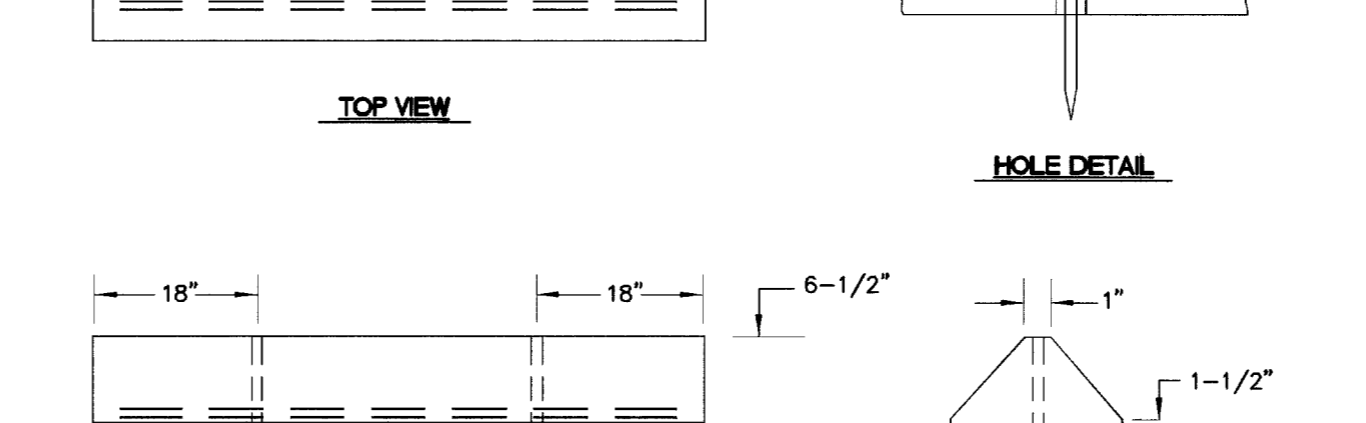
DATE 12-14-00 DWG. NO. 236 PAGE NO. 42



TOP VIEW

HOLE DETAIL

1/2" DEFORMED BAR TO STAY 1" MIN INSIDE CONCRETE



SIDE VIEW

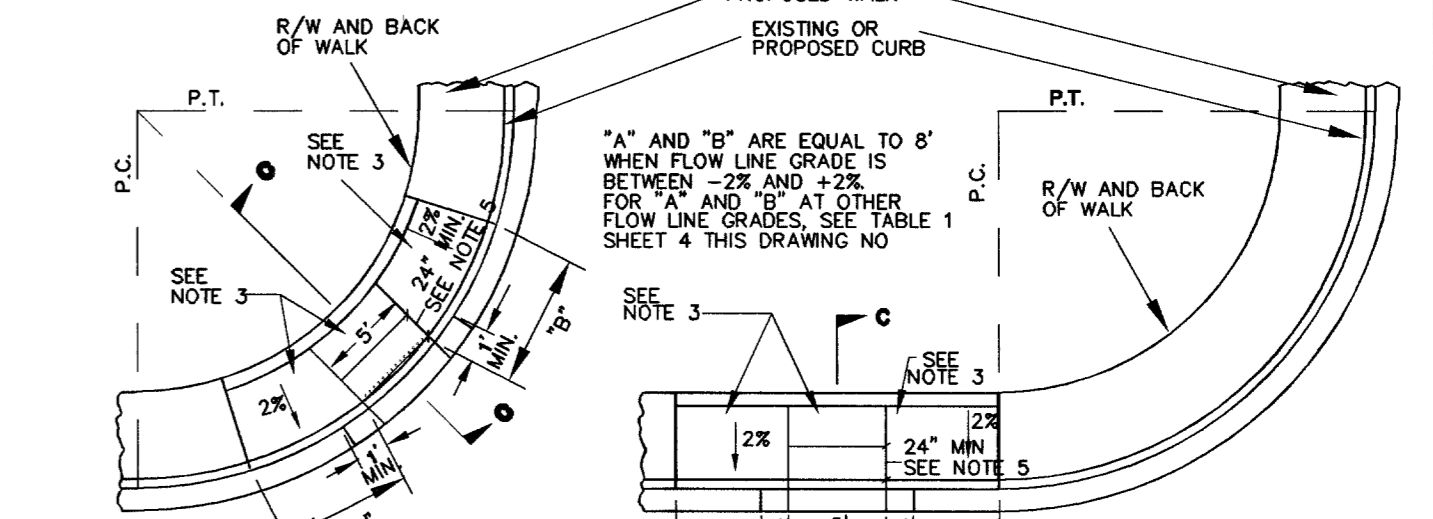
END VIEW

CONTRACTOR IS RESPONSIBLE TO REVIEW THE LATEST UNIFORM STANDARD DRAWINGS, CLARK COUNTY AREA, WHICH SUPERSEDE THESE DETAILS OR ANY DETAILS SHOWN IN THIS PLAN SET.

SPECIFICATION REFERENCE	UNIFORM STANDARD DRAWINGS CLARK COUNTY AREA
501	CONCRETE
505	REINFORCING STEEL

PRECAST BUMPER BLOCK

DATE 12-14-00 DWG. NO. 238 PAGE NO. 44



RAMP IN CURB RETURN

RAMP OUTSIDE CURB RETURN

SECTION C-C

NOTES

1. SIDEWALK RAMP WITHIN CURB RETURN SHALL BE LOCATED AT THE MIDPOINT OF CURB RETURN UNLESS OTHERWISE APPROVED.

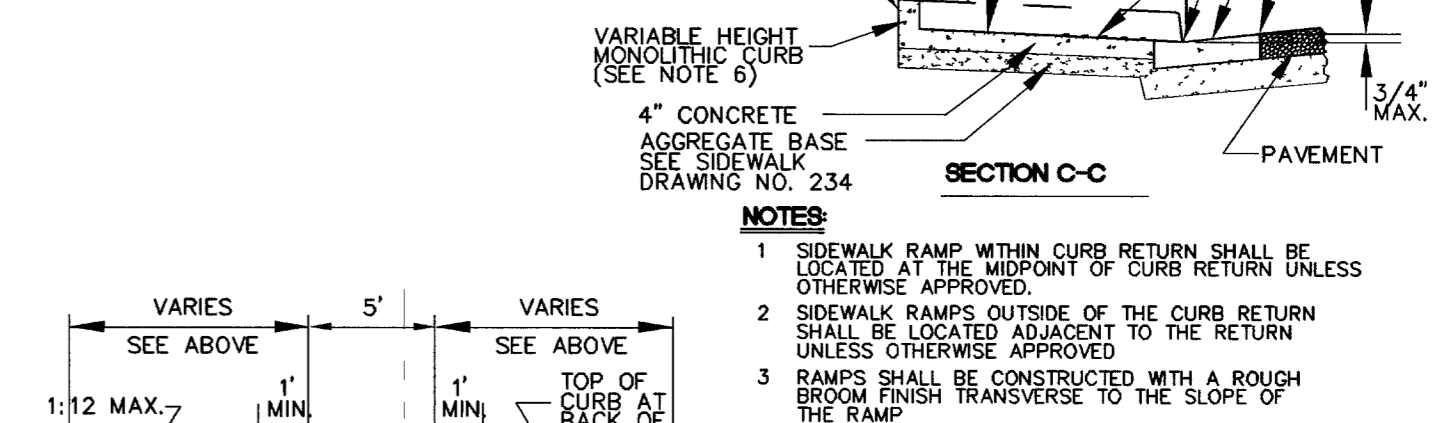
2. SIDEWALK RAMP OUTSIDE OF THE CURB RETURN SHALL BE LOCATED ADJACENT TO THE RETURN UNLESS OTHERWISE APPROVED.

3. RAMP SHALL BE CONSTRUCTED WITH A ROUGH BOTTOM FINISH TRANSVERSE TO THE SLOPE OF THE RAMP.

4. WHEN CONSTRUCTING RAMP WHERE CURB & GUTTER EXISTS, COMPLETELY REMOVE INTERFERING DETAIL OF EXISTING CURB & GUTTER.

5. DETECTABLE WARNING CONSISTING OF RAISED TRUNCATED DOMES WHICH COMPLY WITH DETAILS ON SHEET 4 OF THIS DRAWING NO. AND CONTRASTING VISUALLY WITH ADJACENT SURFACES SHALL BE PLACED ON BOTTOM PORTION OF RAMP EXCLUDING THE FULL WIDTH OF THE RAMP AND TO A MINIMUM DEPTH OF 24 INCHES PERMITTED ONLY IN THE CITY OF BOULDER CITY FOR DETECTABLE WARNING AREA.

6. CURB MAY BE PLACED AND IS PREFERRED BEHIND BACK OF WALK IF SUFFICIENT RIGHT-OF-WAY OR EASEMENTS EXIST AND AS APPROVED BY THE ENGINEER.



PROFILE

CONTRACTOR IS RESPONSIBLE TO REVIEW THE LATEST UNIFORM STANDARD DRAWINGS, CLARK COUNTY AREA, WHICH SUPERSEDE THESE DETAILS OR ANY DETAILS SHOWN IN THIS PLAN SET.

SPECIFICATION REFERENCE	UNIFORM STANDARD DRAWINGS CLARK COUNTY AREA
302	AGGREGATE BASE
501	CONCRETE
502	CONCRETE STRUCTURES

SIDEWALK RAMP CASE I

DATE 11-10-04 DWG. NO. 235 (1 OF 4) PAGE 41

OVATION DEVELOPMENT

1175 AMERICAN PACIFIC DRIVE, SUITE F
HENDERSON, NEVADA 89074
CONTACT: JAN GOYER (702) 990-2325

VPOINT

DESIGNING FOR THE FUTURE

PLANNERS • CONSULTING ENGINEERS • SURVEYORS

1008 WHEAT RANCH DRIVE - HENDERSON, NEVADA 89011 (702) 248-9415

REV	DATE	BY	REVISION

STANDARD DETAIL SHEET

LONE MOUNTAIN APARTMENTS

SHEET

DATE: APRIL 2004

DESIGNED BY: PETER J. LAAS

CHECKED BY: PETER J. LAAS

PROJECT NO.: 0892-ELB9

SCALE: N.T.S.

ENGINEER-STATE OF NEVADA

PETER J. LAAS

Exp: 12/23/05

CIVIL

NO. 14478

SHEET DT11

40 OF 41 SHEETS

DRAWING NO. 107V9322