

LA MIRADA UNIT 1 MONUMENT TIE MAP

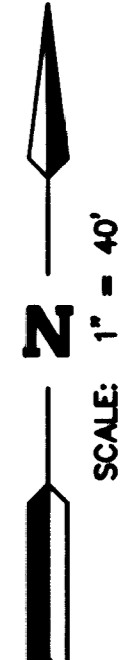
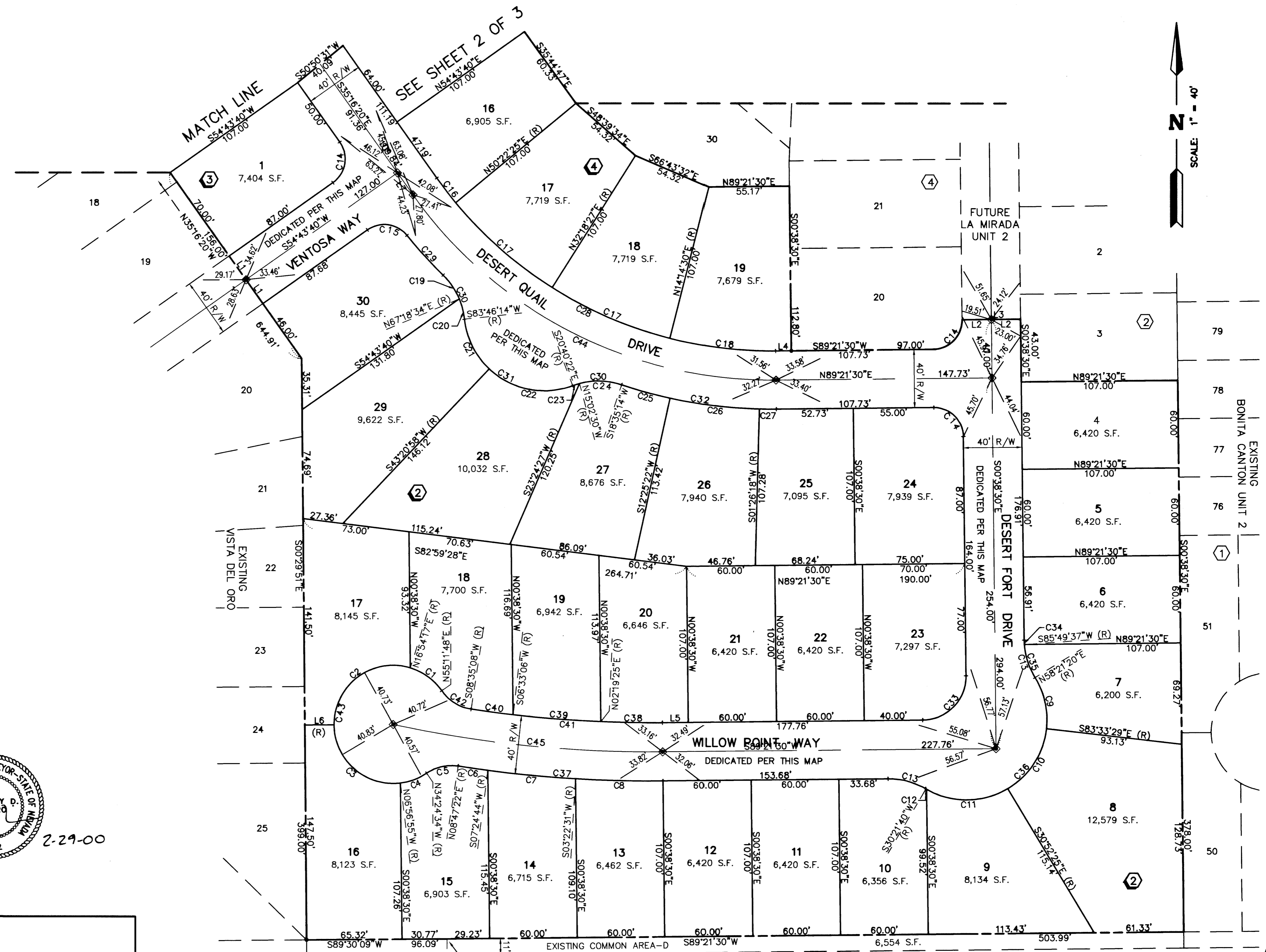
A PLANNED RESIDENTIAL COMMUNITY
BEING A PORTION OF LOT 6-A, AS SHOWN BY A MAP IN THE OFFICE OF THE CLARK COUNTY, NEVADA RECORDER, IN BOOK 56, PAGE 68 OF PLATS. SITUATED IN THE SOUTHEAST QUARTER (SE 1/4) OF SECTION 20, AND THE SOUTHWEST QUARTER (SW 1/4) OF SECTION 21, TOWNSHIP 21 SOUTH, RANGE 60 EAST, M.D.M., CITY OF LAS VEGAS, CLARK COUNTY, NEVADA.

LINE TABLE

No.	BEARING	DISTANCE
L1	N35°16'20"W	20.00'
L2	S89°21'30"W	20.00'
L3	N89°21'30"E	40.00'
L4	S89°21'30"W	10.73'
L5	N89°21'30"E	17.76'
L6	S89°30'09"W	20.00'
L7	S35°16'20"E	18.48'

CURVE TABLE

No.	RADIUS	DELTA	LENGTH	TANGENT
C1	40.50'	38°17'31"	27.07'	14.06'
C2	40.50'	107°24'08"	75.92'	55.14'
C3	40.50'	96°27'04"	68.18'	45.34'
C4	40.50'	27°27'39"	19.41'	9.90'
C5	30.00'	43°11'56"	22.62'	11.88'
C6	856.50'	01°22'38"	20.59'	10.29'
C7	856.50'	04°02'13"	60.35'	30.19'
C8	856.50'	04°01'01"	60.05'	30.04'
C9	55.00'	38°05'11"	36.56'	18.98'
C10	55.00'	52°41'04"	50.57'	27.23'
C11	55.00'	60°32'46"	58.12'	32.10'
C12	55.00'	00°41'19"	0.66'	0.33'
C13	50.00'	31°00'10"	27.05'	13.87'
C14	20.00'	90°00'00"	31.42'	20.00'
C15	20.00'	86°22'15"	30.15'	18.77'
C16	280.00'	04°21'15"	21.28'	10.64'
C17	280.00'	18°03'57"	88.29'	44.51'
C18	280.00'	14°53'00"	72.73'	36.57'
C19	50.00'	22°47'56"	19.90'	10.08'
C20	50.00'	16°27'40"	14.36'	7.23'
C21	55.00'	40°25'16"	38.80'	20.25'
C22	55.00'	64°01'20"	61.46'	34.38'
C23	50.00'	05°37'52"	4.91'	2.46'
C24	50.00'	33°37'44"	29.35'	15.11'
C25	320.00'	06°09'52"	34.43'	17.23'
C26	320.00'	10°59'05"	61.35'	30.77'
C27	320.00'	02°04'48"	11.62'	5.81'
C28	280.00'	55°22'10"	270.59'	146.91'
C29	320.00'	06°35'16"	36.79'	18.42'
C30	50.00'	39°15'36"	34.26'	17.83'
C31	55.00'	104°26'36"	100.26'	70.96'
C32	320.00'	19°13'44"	107.39'	54.21'
C33	30.00'	90°00'00"	47.12'	30.00'
C34	50.00'	03°31'53"	3.08'	1.54'
C35	50.00'	27°28'17"	23.97'	12.22'
C36	55.00'	152°00'20"	145.91'	220.64'
C37	856.50'	09°25'52"	140.98'	70.65'
C38	816.50'	02°57'55"	42.26'	21.13'
C39	816.50'	04°13'41"	60.25'	30.14'
C40	816.50'	02°02'02"	28.98'	14.49'
C41	816.50'	09°13'38"	131.49'	65.89'
C42	30.00'	46°36'41"	24.41'	12.92'
C43	40.50'	269°36'22"	190.57'	---
C44	300.00'	55°22'10"	289.91'	157.40'
C45	836.50'	12°44'19"	185.98'	93.37'



I, GREGOY D. RIVERO, A PROFESSIONAL LAND SURVEYOR IN THE STATE OF NEVADA, DO HEREBY VERIFY THAT THE MONUMENTS HAVE BEEN SET AND THE TIES ESTABLISHED AS SHOWN HEREON.

GREGOY D. RIVERO, PLS 6902



2-29-00

LEGEND

- SET TYPE III MONUMENT PLS 6902 5/8" REBAR W/BRASS CAP PER THIS MAP
- ▲ FOUND MONUMENT AS INDICATED
- ◆ FND TYPE III MONUMENT PLS 8425 5/8" REBAR W/BRASS CAP TIES IN CURB PER THIS MAP
- C5 CURVE DATA
- L5 LINE DATA
- R/W RIGHT-OF-WAY
- 27 LOT NUMBER (TOTAL THIS MAP = 52)
- ① BLOCK NUMBER
- PROPERTY LINE
- - - BOUNDARY LINE
- - - CENTERLINE

106907

P.O.B.

VEGAS DRIVE

DEDICATED PER BOOK 50, PAGE 53 OF PLATS DOCUMENT No. 00779, BOOK 910816

BAISI OF BEARINGS

FOUND TYPE I MONUMENT PER BOOK 56, PAGE 68 OF PLATS 1/4 CORNER

NOTE: DIRECT VEHICULAR ACCESS TO VEGAS DRIVE AND CIELO VISTA AVENUE THROUGH COMMON AREA FROM ABUTTING LOTS IS PROHIBITED.

05B-4301-1
SHEET 3 OF 3
BOOK 60 PAGE 62

W.O.#	DATE	BY
721-B040	JULY 1993	CDK
52		