

LA MIRADA UNIT 1 MONUMENT TIE MAP

A PLANNED RESIDENTIAL COMMUNITY & COMMON INTEREST COMMUNITY
BEING A PORTION OF LOT 6-A, AS SHOWN BY A MAP IN THE OFFICE OF THE CLARK COUNTY, NEVADA RECORDER, IN BOOK 56, PAGE 68 OF PLATS. SITUATED IN THE SOUTHEAST QUARTER (SE 1/4)
OF SECTION 20, AND THE SOUTHWEST QUARTER (SW 1/4) OF SECTION 21, TOWNSHIP 20 SOUTH, RANGE 60 EAST, M.D.M., CITY OF LAS VEGAS, CLARK COUNTY, NEVADA.

LINE DATA

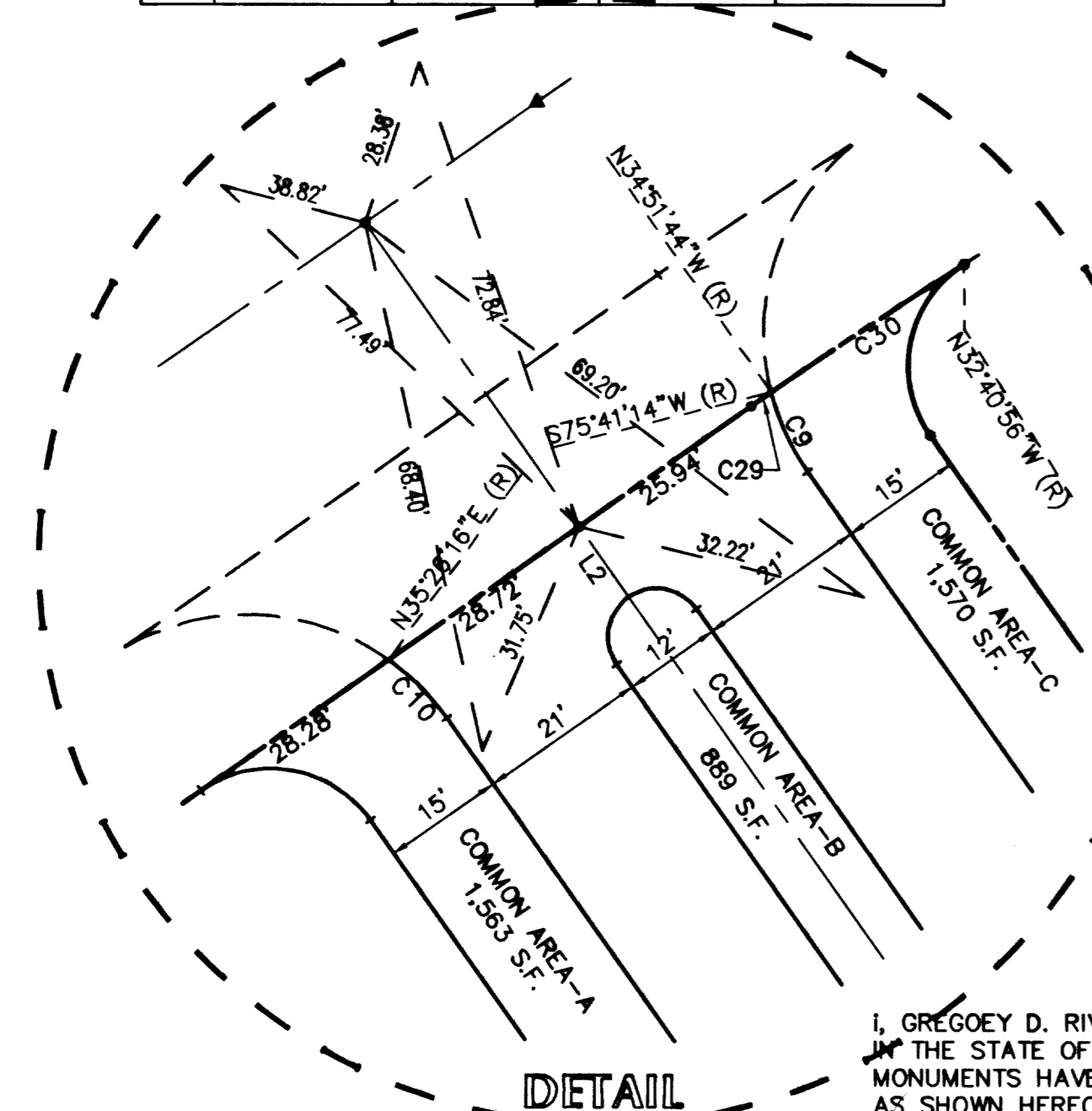
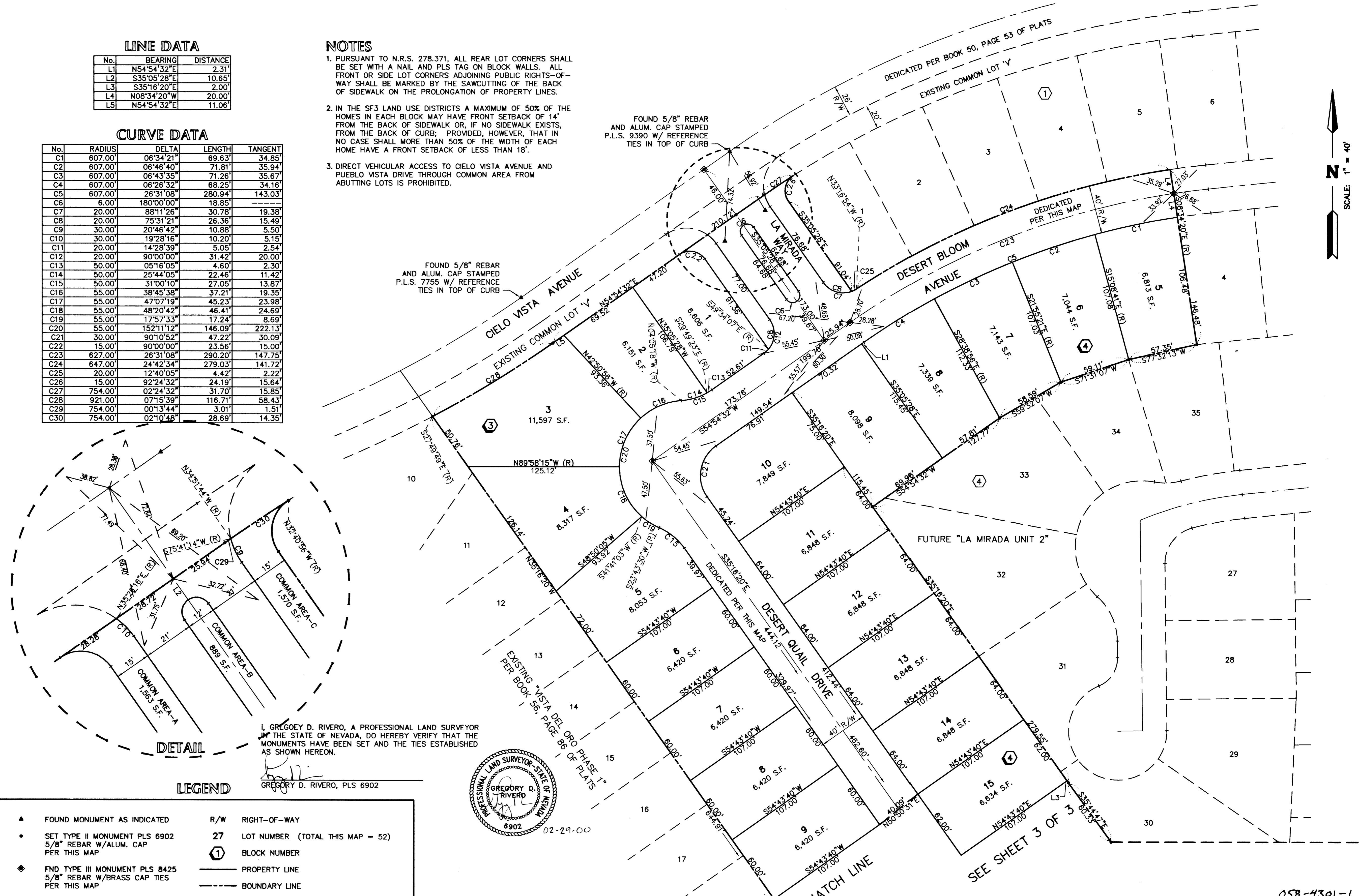
No.	BEARING	DISTANCE
L1	N54°54'32"E	2.31'
L2	S35°05'28"E	10.65'
L3	S35°16'20"E	2.00'
L4	N09°34'20"W	20.00'
L5	N54°54'32"E	11.06'

CURVE DATA

No.	RADIUS	DELTA	LENGTH	TANGENT
C1	607.00'	06°34'21"	69.63'	34.85'
C2	607.00'	06°46'40"	71.81'	35.94'
C3	607.00'	06°43'35"	71.26'	35.67'
C4	607.00'	06°26'32"	68.25'	34.16'
C5	607.00'	26°31'08"	280.94'	143.03'
C6	6.00'	180°00'00"	18.85'	---
C7	20.00'	88°11'26"	30.78'	19.38'
C8	20.00'	75°31'21"	26.36'	15.49'
C9	30.00'	20°46'42"	10.88'	5.50'
C10	30.00'	19°28'16"	10.20'	5.15'
C11	20.00'	14°28'39"	5.05'	2.54'
C12	20.00'	90°00'00"	31.42'	20.00'
C13	50.00'	05°16'05"	4.60'	2.30'
C14	50.00'	25°44'05"	22.46'	11.42'
C15	50.00'	31°00'10"	27.05'	13.87'
C16	55.00'	38°45'38"	37.21'	19.35'
C17	55.00'	47°07'19"	45.23'	23.98'
C18	55.00'	48°20'42"	46.41'	24.69'
C19	55.00'	17°57'33"	17.24'	8.69'
C20	55.00'	152°11'12"	146.09'	222.13'
C21	30.00'	90°10'52"	47.22'	30.09'
C22	15.00'	90°00'00"	23.56'	15.00'
C23	627.00'	26°31'08"	290.20'	147.75'
C24	647.00'	24°42'34"	279.03'	141.72'
C25	20.00'	12°40'05"	4.42'	2.22'
C26	15.00'	92°24'32"	24.19'	15.64'
C27	754.00'	02°24'32"	31.70'	15.85'
C28	921.00'	07°15'39"	116.71'	58.43'
C29	754.00'	00°13'44"	3.01'	1.51'
C30	754.00'	02°10'48"	28.69'	14.35'

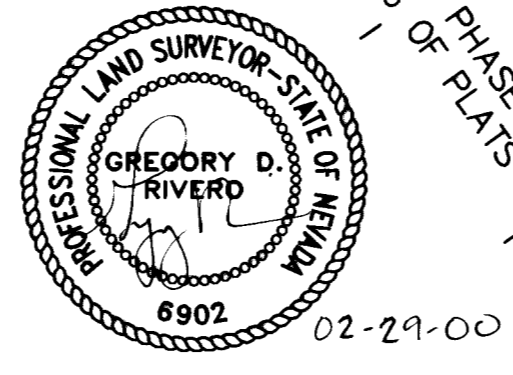
NOTES

- PURSUANT TO N.R.S. 278.371, ALL REAR LOT CORNERS SHALL BE SET WITH A NAIL AND PLS TAG ON BLOCK WALLS. ALL FRONT OR SIDE LOT CORNERS ADJOINING PUBLIC RIGHTS-OF-WAY SHALL BE MARKED BY THE SAWCUTTING OF THE BACK OF SIDEWALK ON THE PROLONGATION OF PROPERTY LINES.
- IN THE SF3 LAND USE DISTRICTS A MAXIMUM OF 50% OF THE HOMES IN EACH BLOCK MAY HAVE FRONT SETBACK OF 14' FROM THE BACK OF SIDEWALK OR, IF NO SIDEWALK EXISTS, FROM THE BACK OF CURB. PROVIDED, HOWEVER, THAT IN NO CASE SHALL MORE THAN 50% OF THE WIDTH OF EACH HOME HAVE A FRONT SETBACK OF LESS THAN 18'.
- DIRECT VEHICULAR ACCESS TO CIELO VISTA AVENUE AND PUEBLO VISTA DRIVE THROUGH COMMON AREA FROM ABUTTING LOTS IS PROHIBITED.



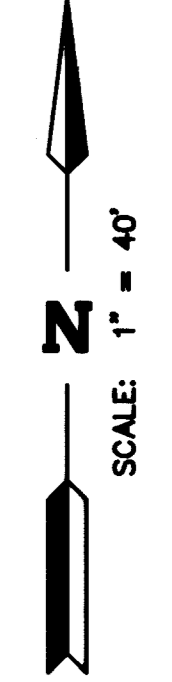
I, GREGORY D. RIVERO, A PROFESSIONAL LAND SURVEYOR IN THE STATE OF NEVADA, DO HEREBY VERIFY THAT THE MONUMENTS HAVE BEEN SET AND THE TIES ESTABLISHED AS SHOWN HEREON.

GREGORY D. RIVERO, PLS 6902



Symbol	Description	Symbol	Description
▲	FOUND MONUMENT AS INDICATED	R/W	RIGHT-OF-WAY
•	SET TYPE II MONUMENT PLS 6902 5/8" REBAR W/ALUM. CAP PER THIS MAP	27	LOT NUMBER (TOTAL THIS MAP = 32)
◆	FND TYPE III MONUMENT PLS 8425 5/8" REBAR W/BRASS CAP TIES PER THIS MAP	①	BLOCK NUMBER
C5	CURVE DATA	---	PROPERTY LINE
L5	LINE DATA	---	BOUNDARY LINE
		---	CENTERLINE

106906



W.O.#	DATE	BY	DESCRIPTION
721-B041	JULY 1993	CDK	MONUMENT TIE MAP
12-1-93			REV. THROUGH CS&D.WMG & PER CITY CHK. PRINT (REPLOTT)
02/28/00			MONUMENT TIE MAP