

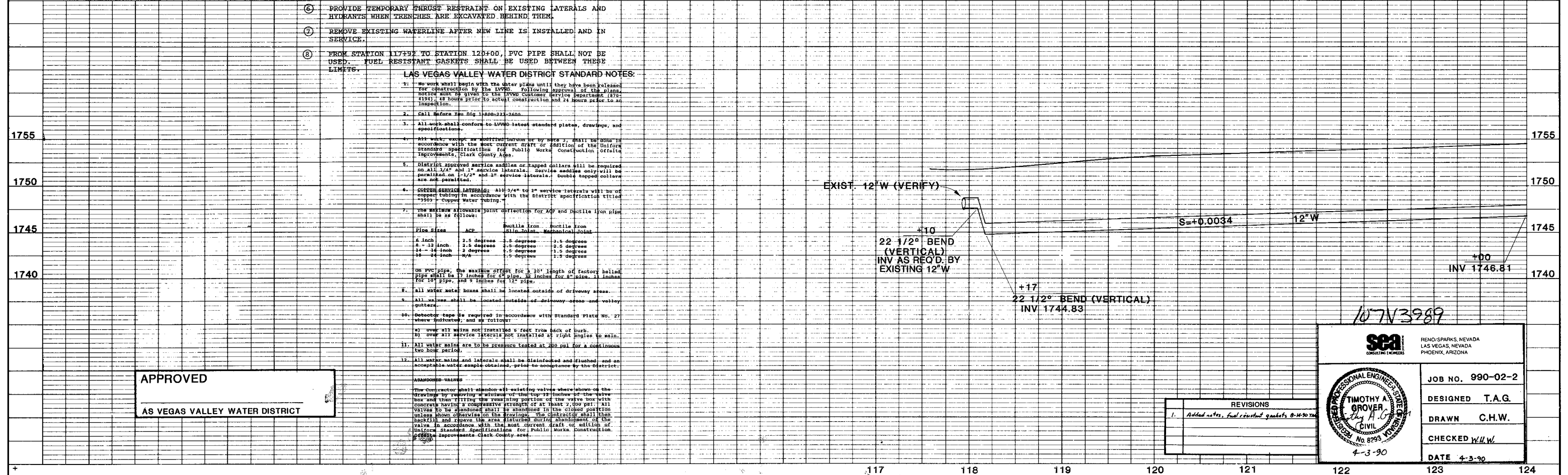
- GENERAL NOTES:**
- FOR WATER TRENCH DETAILS SEE SHEET NO. W-10.
 - FOR WATER STRUCTURE LIST SEE SHEET NO. W-11.
 - THE LOCATIONS OF MAINS, VALVES, SERVICES, LATERALS, HYDRANTS, CONNECTION POINTS, AND UNDERGROUND FACILITIES SHOWN ARE APPROXIMATE AND ARE BASED UPON RECORD DRAWINGS FROM THE FACILITY OWNERS. IT SHALL BE THE RESPONSIBILITY OF THE CONTRACTOR TO LOCATE ALL EXISTING UNDERGROUND FACILITIES WHETHER SHOWN OR NOT, AND TO NOTIFY ALL FACILITY OWNERS TO VERIFY IN THE FIELD THE LOCATION OF THEIR INSTALLATIONS PRIOR TO CONSTRUCTION.
 - AT LOCATIONS WHERE NEW UNDERGROUND FACILITIES CROSS EXISTING FACILITIES THE CONTRACTOR SHALL EXPOSE THE EXISTING FACILITY AND VERIFY THAT SUFFICIENT HORIZONTAL AND VERTICAL CLEARANCE EXISTS FOR THE NEW FACILITY TO BE CONSTRUCTED IN SUBSTANTIAL COMPLIANCE WITH THE PLANS. AT LOCATIONS WHERE NEW UNDERGROUND FACILITIES ARE TO BE CONNECTED TO EXISTING FACILITIES THE CONTRACTOR SHALL EXPOSE THE EXISTING FACILITY AND VERIFY THAT THE CONNECTION CAN BE MADE AS SHOWN ON THE PLANS. IF THE CONNECTION IS TO BE MADE WITH A TAPPING SLEEVE THE CONTRACTOR SHALL VERIFY THAT THERE IS SUFFICIENT CLEARANCE FOR THE TAPPING MACHINE. THESE VERIFICATIONS SHALL BE DONE PRIOR TO ANY CONSTRUCTION WITHIN 200 FEET OF THE CROSSING OR CONNECTION POINT. ANY CONFLICTS SHALL BE BROUGHT TO THE ENGINEER'S ATTENTION AS SOON AS THEY ARE DISCOVERED.
 - THE STATIONING OF NEW WATER FACILITIES SHOWN ON THE PLANS IS APPROXIMATE. IT IS EXPECTED THAT ADJUSTMENTS IN LOCATION OF CONNECTION POINTS, HYDRANTS, SERVICES, LATERALS, AND FITTINGS WILL BE NECESSARY BASED ON FIELD CONDITIONS.

- PROVIDE TEMPORARY THRUST RESTRAINT ON EXISTING LATERALS AND HYDRANTS WHEN TRENCHES ARE EXCAVATED BEHIND THEM.
- REMOVE EXISTING WATERLINE AFTER NEW LINE IS INSTALLED AND IN SERVICE.
- FROM STATION 117+92 TO STATION 120+00, PVC PIPE SHALL NOT BE USED. FUEL RESISTANT GASKETS SHALL BE USED BETWEEN THESE LIMITS.

LAS VEGAS VALLEY WATER DISTRICT STANDARD NOTES:

- No work shall begin until the water plans have been released for construction by the LVWD following approval of the District Engineer and the LVWD Customer Service Department (878-3194), 48 hours prior to actual construction and 24 hours prior to an inspection.
 - Call before you dig 1-800-222-2666
 - All work shall conform to LVWD latest standard plans, drawings, and specifications.
 - All work, except as otherwise indicated by notes, shall be done in accordance with the most current draft or edition of the Uniform Standards Specifications for Public Works Construction Official Improvement, Clark County Area.
 - District approved service saddles or tapped collars shall be installed on all 1/4" and 1/2" service laterals. Service saddles only will be permitted on 3/4" and 1" service laterals. Double topped collars are not permitted.
 - COPPER SERVICE LATERALS:** All 3/4" to 2" service laterals will be of copper tubing in accordance with the District specifications titled "COPPER WATER PIPING".
 - The minimum minimum joint connection for ACP and ductile iron pipe shall be as follows:

Pipe Sizes	ACP	Ductile Iron Slip Joint	Ductile Iron Mechanical Joint
4 - 12 inch	2.5 degrees	2.5 degrees	3.5 degrees
14 - 18 inch	2.5 degrees	2.5 degrees	2.5 degrees
20 - 24 inch	3 degrees	2.5 degrees	1.5 degrees
26 - 36 inch	N/A	1.5 degrees	1.5 degrees
 - On PVC pipe, the maximum offset for a 20' length of factory belled pipe shall be 17 inches for 6" pipe, 20 inches for 8" pipe, 11 inches for 10" pipe, and 8 inches for 12" pipe.
 - All water meter boxes shall be located outside of driveway areas.
 - All valves shall be located outside of driveway areas and valley gutters.
 - Detector tape is required in accordance with Standard Plan No. 27 where indicated, and as follows:
 - over all mains not installed 6 feet from back of curb.
 - over all service laterals not installed at right angles to main.
 - All water mains are to be pressure tested at 200 psi for a continuous two hour period.
 - All water mains and laterals shall be disinfected and flushed and an acceptable water sample obtained, prior to acceptance by the District.
- ABANDONED VALVES**
The Contractor shall abandon all existing valves where shown on the drawings by removing a minimum of the top 18 inches of the valve box and filling the remaining portion of the valve box with concrete having a compressive strength of at least 2,500 psi. All valves to be abandoned shall be abandoned in the closed position unless shown otherwise on the drawings. The contractor shall then backfill and restore the area finished surface immediately adjacent to the valve in accordance with the most current draft or edition of District Standard Specifications for Public Works Construction Official Improvement Clark County Area.



APPROVED
AS VEGAS VALLEY WATER DISTRICT

REVISIONS

1.	Added notes, fuel resistant gaskets, 8-10-70
----	--

107N3989

SEA
CONSULTING ENGINEERS

RENO/SPIRKS, NEVADA
LAS VEGAS, NEVADA
PHOENIX, ARIZONA

TIMOTHY A. GROVER
Professional Engineer
No. 8295
4-3-90

JOB NO. 990-02-2
DESIGNED T.A.G.
DRAWN C.H.W.
CHECKED W.H.W.
DATE 4-3-90

62022