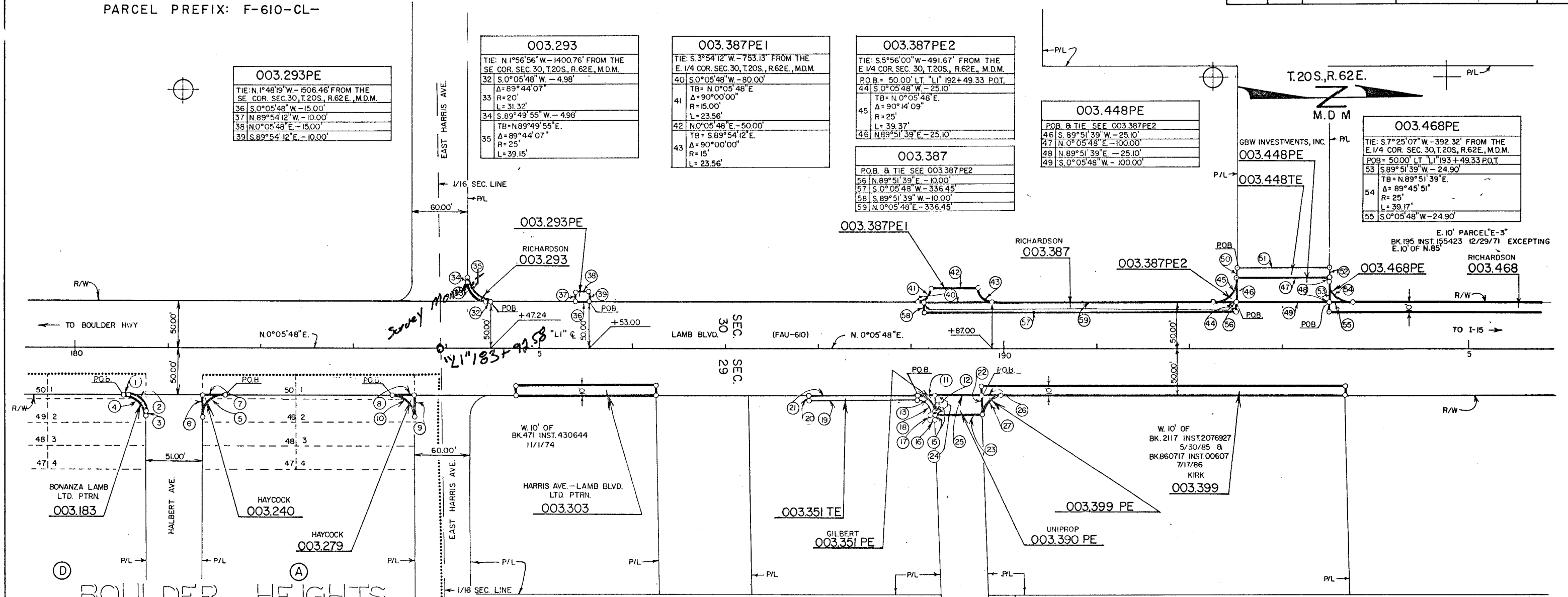


PARCEL PREFIX: F-610-CL-



003.293PE	
TIE: N 1°48'19" W - 1506.46' FROM THE SE COR. SEC. 30, T.20S, R.62E, M.D.M.	
36	S 0°05'48" W - 15.00'
37	N 89°54'12" W - 10.00'
38	N 0°05'48" E - 15.00'
39	S 89°54'12" E - 10.00'

003.293	
TIE: N 1°56'56" W - 1400.76' FROM THE SE COR. SEC. 30, T.20S, R.62E, M.D.M.	
32	S 0°05'48" W - 4.98'
33	Δ = 89°44'07"
34	S 89°49'55" W - 4.98'
35	TB = N 89°49'55" E
	Δ = 89°44'07"
	R = 25'
	L = 39.15'

003.387PE1	
TIE: S 3°54'12" W - 753.13' FROM THE E 1/4 COR. SEC. 30, T.20S, R.62E, M.D.M.	
40	S 0°05'48" W - 80.00'
41	TB = N 0°05'48" E
	Δ = 90°00'00"
	R = 15.00'
42	N 0°05'48" E - 50.00'
	TB = S 89°54'12" E
	Δ = 90°00'00"
	R = 15'
	L = 23.56'

003.387PE2	
TIE: S 5°56'00" W - 491.67' FROM THE E 1/4 COR. SEC. 30, T.20S, R.62E, M.D.M.	
44	P.O.B. = 50.00' RT "L" 192+49.33 P.O.T.
	S 0°05'48" W - 25.10'
	TB = N 0°05'48" E
	Δ = 90°14'09"
	R = 25'
	L = 39.37'
46	N 89°51'39" E - 25.10'

003.387	
P.O.B. & TIE SEE 003.387PE2	
56	N 89°51'39" E - 10.00'
57	S 0°05'48" W - 336.45'
58	S 89°51'39" W - 10.00'
59	N 0°05'48" E - 336.45'

003.448PE	
P.O.B. & TIE SEE 003.387PE2	
46	S 89°51'39" W - 25.10'
47	N 0°05'48" E - 100.00'
48	N 89°51'39" E - 25.10'
49	S 0°05'48" W - 100.00'

003.468PE	
TIE: S 7°25'07" W - 392.32' FROM THE E 1/4 COR. SEC. 30, T.20S, R.62E, M.D.M.	
53	P.O.B. = 50.00' RT "L" 193+49.33 P.O.T.
	S 89°51'39" W - 24.90'
	TB = N 89°51'39" E
	Δ = 89°45'51"
	R = 25'
	L = 39.17'
55	S 0°05'48" W - 24.90'

003.183	
TIE: N 2°56'02" E - 1010.14' FROM THE SW COR. SEC. 29, T.20S, R.62E, M.D.M.	
P.O.B. = 50.00' RT "L" 180+56.27 P.O.T.	
1	N 0°05'48" E - 9.55'
	Δ = 87°21'39"
	R = 15'
	L = 22.87'
3	N 87°27'27" E - 9.55'
	TB = S 87°27'27" W
	Δ = 87°21'39"
	R = 25'
	L = 38.12'

003.240	
TIE: N 2°40'33" E - 1111.14' FROM THE SW COR. SEC. 29, T.20S, R.62E, M.D.M.	
P.O.B. = 50.00' RT "L" 181+57.38 P.O.T.	
	TB = S 0°05'48" W
	Δ = 92°38'21"
	R = 25'
	L = 40.42'
6	S 87°27'27" W - 26.18'
7	N 0°05'48" E - 26.18'

003.279	
TIE: N 2°18'36" E - 1294.58' FROM THE SW COR. SEC. 29, T.20S, R.62E, M.D.M.	
P.O.B. = 50.00' RT "L" 183+40.99 P.O.T.	
8	N 0°05'48" E - 23.87'
9	N 87°27'11" E - 23.87'
	TB = S 87°27'11" W
	Δ = 87°21'23"
	R = 25'
	L = 38.12'

003.351 PE	
TIE: S 3°20'52" E - 832.21' FROM THE W 1/4 COR. SEC. 29, T.20S, R.62E, M.D.M.	
P.O.B. = 50.00' RT "L" 189+07.76 P.O.T.	
11	N 0°05'48" E - 19.10'
12	N 87°27'11" E - 19.10'
	TB = S 87°27'11" W
	Δ = 87°21'23"
	R = 20'
	L = 30.49'

003.351 TE	
TIE: S 3°20'52" E - 832.21' FROM THE W 1/4 COR. SEC. 29, T.20S, R.62E, M.D.M.	
P.O.B. = 50.00' RT "L" 189+07.76 P.O.T.	
	TB = N 0°05'48" E
	Δ = 87°21'23"
	R = 20'
	L = 30.49'
15	N 87°27'11" E - 5.00'
16	S 2°32'49" E - 5.00'
17	S 87°27'11" W - 5.00'
	Δ = 87°21'23"
	R = 15'
	L = 22.87'
19	S 0°05'48" W - 115.76'
20	N 89°54'12" W - 5.00'
21	N 0°05'48" E - 115.76'

003.390 PE	
TIE: S 3°39'35" E - 763.19' FROM THE W 1/4 COR. SEC. 29, T.20S, R.62E, M.D.M.	
P.O.B. = 50.00' RT "L" 189+76.91 P.O.T.	
	TB = N 0°05'48" E
	Δ = 87°27'11" E - 20.94'
	R = 20'
	L = 30.49'
22	N 87°27'11" E - 20.94'
23	S 0°05'48" W - 50.00'
24	S 87°27'11" W - 20.94'
25	N 0°05'48" E - 50.00'

003.448 TE	
TIE: S 9°57'50" W - 496.62' FROM THE E 1/4 COR. SEC. 30, T.20S, R.62E, M.D.M.	
P.O.B. = 85.10' RT "L" 192+49.19 P.O.T.	
	51 N 0°05'48" E - 100.00'
	52 N 89°51'39" E - 100.00'
	47 S 0°05'48" W - 100.00'
	50 S 89°51'39" W - 100.00'

003.399 PE	
TIE: S 3°39'35" E - 763.19' FROM THE W 1/4 COR. SEC. 29, T.20S, R.62E, M.D.M.	
P.O.B. = 50.00' RT "L" 189+76.91 P.O.T.	
	TB = S 0°05'48" W
	Δ = 92°38'37"
	R = 20'
	L = 32.74'
27	S 87°27'11" W - 20.94'

PERPETUATE 1/16 SECTION CORNER  
107V3989

STATE OF NEVADA  
DEPT OF TRANSPORTATION R/W DIVISION

DATE: SEPTEMBER 1989

R/W PLANS

APPROVED *[Signature]*  
SUPERVISOR, R/W ENGINEERING

REVISION	DATE

66967

PLACED: CAP  
CHECKED: [Signature]