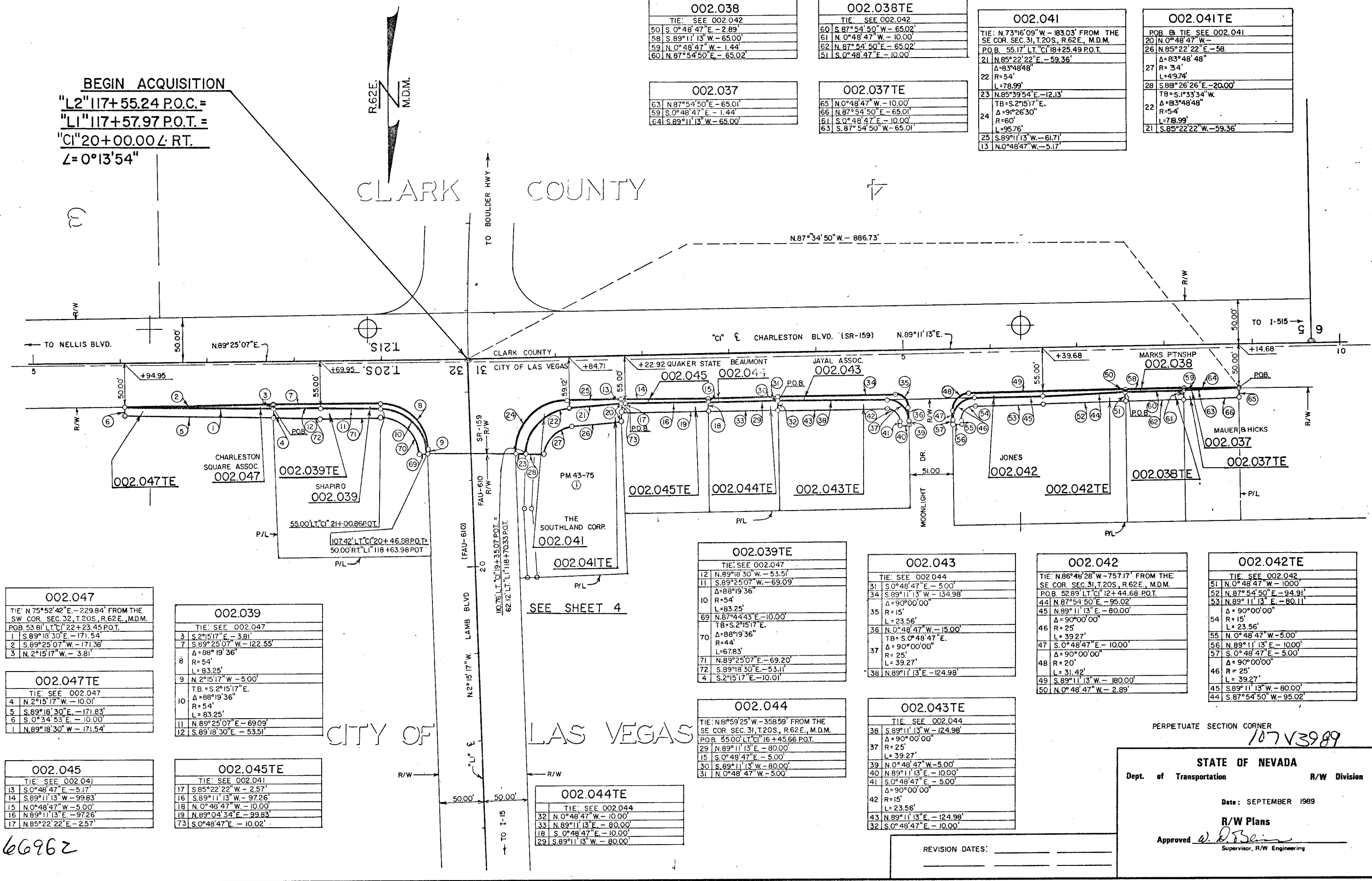


PARCEL PREFIX: S-159-CL-

FED. RD. REG. NO.	STATE	PROJECT NO.	COUNTY	SHEET NO.
9	NEVADA	M-610(5)	CLARK	RW-2

BEGIN ACQUISITION  
 "L2" 117+55.24 P.O.C. =  
 "L1" 117+57.97 P.O.T. =  
 "C1" 20+00.00 ∠ RT.  
 ∠ = 0°13'54"

CLARK COUNTY



002.038
TIE: SEE 002.042
50 S. 0°48'47" E. - 2.89'
58 S. 89°11'13" W. - 65.00'
59 N. 0°48'47" W. - 1.44'
60 N. 87°54'50" E. - 65.02'

002.038TE
TIE: SEE 002.042
60 S. 87°54'50" W. - 65.02'
61 N. 0°48'47" W. - 10.00'
62 N. 87°54'50" E. - 65.02'
51 S. 0°48'47" E. - 10.00'

002.041
TIE: N. 73°16'09" W. - 183.03' FROM THE SE COR. SEC. 31, T. 20S., R. 62E., M.D.M.
P.O.B. 55.17' LT. "C1" 18+25.49 P.O.T.
21 N. 85°22'22" E. - 59.36'
Δ = 83°48'48"
22 R = 54'
L = 78.99'
23 N. 85°39'54" E. - 12.13'
TB = S. 2°15'17" E.
Δ = 91°26'30"
R = 60'
L = 95.76'
25 S. 89°11'13" W. - 61.71'
13 N. 0°48'47" W. - 5.17'

002.041TE
POB @ TIE SEE 002.041
20 N. 0°48'47" W. -
26 N. 85°22'22" E. - 58'
Δ = 83°48'48"
27 R = 34'
L = 49.74'
28 S. 88°26'26" E. - 20.00'
TB = S. 1°33'34" W.
Δ = 83°48'48"
R = 54'
L = 78.99'
21 S. 85°22'22" W. - 59.36'

002.037
63 N. 87°54'50" E. - 65.01'
59 S. 0°48'47" E. - 1.44'
64 S. 89°11'13" W. - 65.00'

002.037TE
65 N. 0°48'47" W. - 10.00'
66 N. 87°54'50" E. - 65.01'
61 S. 0°48'47" E. - 10.00'
63 S. 87°54'50" W. - 65.01'

002.047
TIE: N. 75°52'42" E. - 229.84' FROM THE SW COR. SEC. 32, T. 20S., R. 62E., M.D.M.
POB 53.81' LT. "C1" 22+23.45 P.O.T.
1 S. 89°18'30" E. - 171.54'
2 S. 89°25'07" W. - 171.38'
3 N. 2°15'17" W. - 3.81'

002.047TE
TIE: SEE 002.047
4 N. 2°15'17" W. - 10.01'
5 S. 89°18'30" E. - 171.83'
6 S. 0°34'53" E. - 10.00'
1 N. 89°18'30" W. - 171.54'

002.045
TIE: SEE 002.041
13 S. 0°48'47" E. - 5.17'
14 S. 89°11'13" W. - 99.83'
15 N. 0°48'47" W. - 5.00'
16 N. 89°11'13" E. - 97.26'
17 N. 85°22'22" E. - 2.57'

002.039
TIE: SEE 002.047
3 S. 2°15'17" E. - 3.81'
7 S. 89°25'07" W. - 122.55'
Δ = 88°19'36"
8 R = 54'
L = 83.25'
9 N. 2°15'17" W. - 5.00'
T.B. = S. 2°15'17" E.
Δ = 88°19'36"
R = 54'
L = 83.25'
11 N. 89°25'07" E. - 69.09'
12 S. 89°18'30" E. - 53.51'

002.045TE
TIE: SEE 002.041
17 S. 85°22'22" W. - 2.57'
16 S. 89°11'13" W. - 97.26'
18 N. 0°48'47" W. - 10.00'
19 N. 89°04'34" E. - 99.83'
73 S. 0°48'47" E. - 10.02'

002.039TE
TIE: SEE 002.047
12 N. 89°18'30" W. - 53.51'
11 S. 89°25'07" W. - 69.09'
Δ = 88°19'36"
10 R = 54'
L = 83.25'
69 N. 87°44'43" E. - 10.00'
T.B. = S. 2°15'17" E.
Δ = 88°19'36"
R = 44'
L = 67.83'
71 N. 89°25'07" E. - 69.20'
72 S. 89°18'30" E. - 53.11'
4 S. 2°15'17" E. - 10.01'

002.044
TIE: N. 81°59'25" W. - 358.59' FROM THE SE COR. SEC. 31, T. 20S., R. 62E., M.D.M.
POB 55.00' LT. "C1" 16+45.66 P.O.T.
29 N. 89°11'13" E. - 80.00'
15 S. 0°48'47" E. - 5.00'
30 S. 89°11'13" W. - 80.00'
31 N. 0°48'47" W. - 5.00'

002.043
TIE: SEE 002.044
31 S. 0°48'47" E. - 5.00'
34 S. 89°11'13" W. - 134.98'
Δ = 90°00'00"
35 R = 15'
L = 23.56'
36 N. 0°48'47" W. - 15.00'
T.B. = S. 0°48'47" E.
Δ = 90°00'00"
R = 25'
L = 39.27'
38 N. 89°11'13" E. - 124.98'

002.042
TIE: N. 86°48'28" W. - 757.17' FROM THE SE COR. SEC. 31, T. 20S., R. 62E., M.D.M.
POB 52.89' LT. "C1" 12+44.68 P.O.T.
44 N. 87°54'50" E. - 95.02'
45 N. 89°11'13" E. - 80.00'
Δ = 90°00'00"
46 R = 25'
L = 39.27'
47 S. 0°48'47" E. - 10.00'
Δ = 90°00'00"
48 R = 20'
L = 31.42'
49 S. 89°11'13" W. - 180.00'
50 N. 0°48'47" W. - 2.89'

002.042TE
TIE: SEE 002.042
51 N. 0°48'47" W. - 10.00'
52 N. 87°54'50" E. - 94.91'
53 N. 89°11'13" E. - 80.11'
Δ = 90°00'00"
54 R = 15'
L = 23.56'
55 N. 0°48'47" W. - 5.00'
56 N. 89°11'13" E. - 10.00'
57 S. 0°48'47" E. - 5.00'
Δ = 90°00'00"
46 R = 25'
L = 39.27'
45 S. 89°11'13" W. - 80.00'
44 S. 87°54'50" W. - 95.02'

66962

REVISION DATES: \_\_\_\_\_

PERPETUATE SECTION CORNER  
 107V3989

STATE OF NEVADA  
 Dept. of Transportation R/W Division

Date: SEPTEMBER 1989

R/W Plans  
 Approved *[Signature]*  
 Supervisor, R/W Engineering