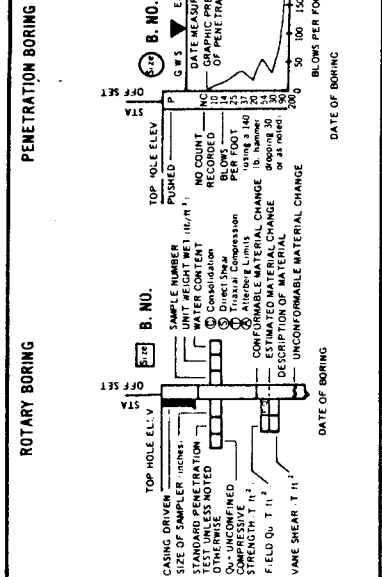


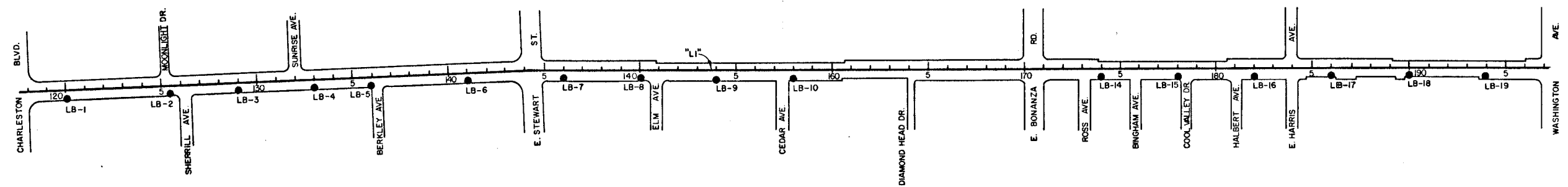
NOTE: FOUNDATION REPORT AVAILABLE FOR CONTRACTORS STUDY IN DISTRICT OFFICE AND MATERIALS & TESTING DIVISION



PLAN OF ANY BORING

- 2 CONE PENETROMETER
- ROTARY BORING METE
- AUGER BORING DRY
- DIAMOND CORE BORING
- TEST PIT

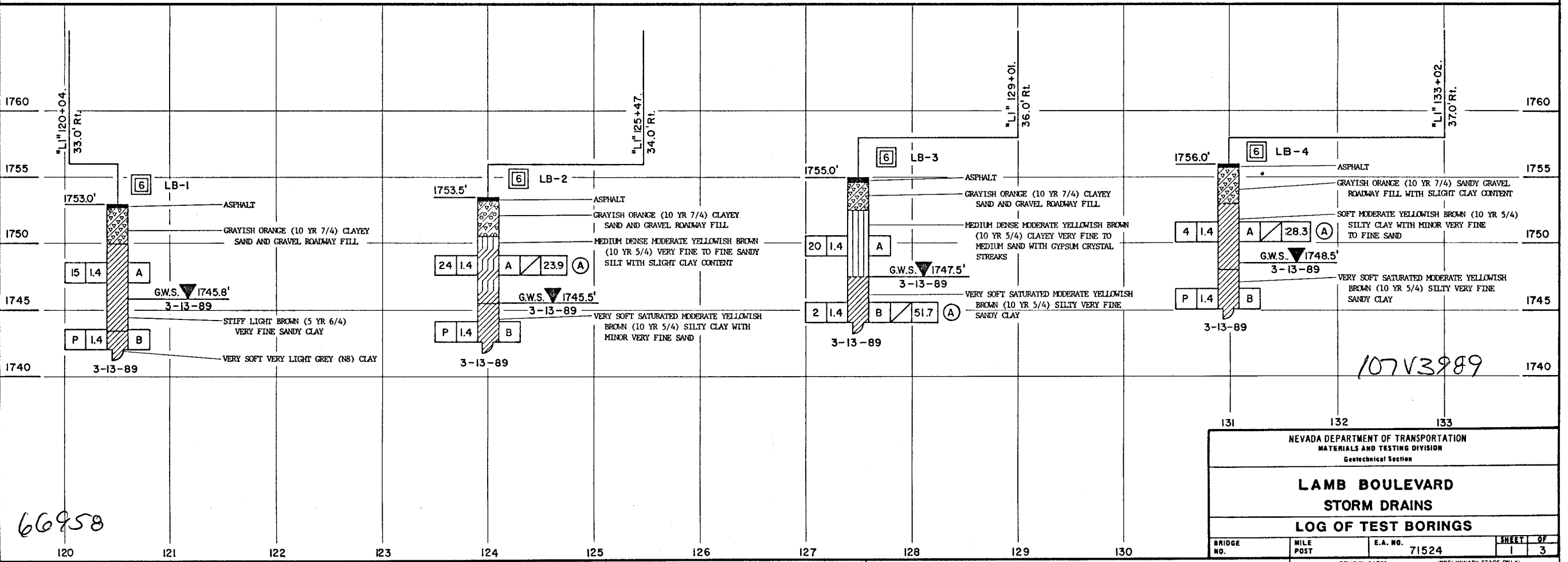
BIT SIZE: 0.0, 0.5, 1.0, 1.5, 2.0, 2.5, 3.0, 3.5, 4.0, 4.5, 5.0, 5.5, 6.0, 6.5, 7.0, 7.5, 8.0, 8.5, 9.0, 9.5, 10.0, 10.5, 11.0, 11.5, 12.0, 12.5, 13.0, 13.5, 14.0, 14.5, 15.0, 15.5, 16.0, 16.5, 17.0, 17.5, 18.0, 18.5, 19.0, 19.5, 20.0, 20.5, 21.0, 21.5, 22.0, 22.5, 23.0, 23.5, 24.0, 24.5, 25.0, 25.5, 26.0, 26.5, 27.0, 27.5, 28.0, 28.5, 29.0, 29.5, 30.0, 30.5, 31.0, 31.5, 32.0, 32.5, 33.0, 33.5, 34.0, 34.5, 35.0, 35.5, 36.0, 36.5, 37.0, 37.5, 38.0, 38.5, 39.0, 39.5, 40.0, 40.5, 41.0, 41.5, 42.0, 42.5, 43.0, 43.5, 44.0, 44.5, 45.0, 45.5, 46.0, 46.5, 47.0, 47.5, 48.0, 48.5, 49.0, 49.5, 50.0, 50.5, 51.0, 51.5, 52.0, 52.5, 53.0, 53.5, 54.0, 54.5, 55.0, 55.5, 56.0, 56.5, 57.0, 57.5, 58.0, 58.5, 59.0, 59.5, 60.0, 60.5, 61.0, 61.5, 62.0, 62.5, 63.0, 63.5, 64.0, 64.5, 65.0, 65.5, 66.0, 66.5, 67.0, 67.5, 68.0, 68.5, 69.0, 69.5, 70.0, 70.5, 71.0, 71.5, 72.0, 72.5, 73.0, 73.5, 74.0, 74.5, 75.0, 75.5, 76.0, 76.5, 77.0, 77.5, 78.0, 78.5, 79.0, 79.5, 80.0, 80.5, 81.0, 81.5, 82.0, 82.5, 83.0, 83.5, 84.0, 84.5, 85.0, 85.5, 86.0, 86.5, 87.0, 87.5, 88.0, 88.5, 89.0, 89.5, 90.0, 90.5, 91.0, 91.5, 92.0, 92.5, 93.0, 93.5, 94.0, 94.5, 95.0, 95.5, 96.0, 96.5, 97.0, 97.5, 98.0, 98.5, 99.0, 99.5, 100.0



PLAN

STANDARD PENETRATION CLASSIFICATION		CLAYEY SOIL	
GRANULAR SOIL	DENSITY	BLOWS/FT.	CONSISTENCY
VERY LOOSE	0-4	0-1	VERY SOFT
LOOSE	5-10	2-4	SOFT
MEDIUM DENSE	11-20	5-8	MEDIUM STIFF
DENSE	21-30	9-15	STIFF
VERY DENSE	31-40	16-30	VERY STIFF
OVER 40	OVER 50	31-60	HARD
		OVER 60	VERY HARD

THE UNIFIED SOIL CLASSIFICATION SYSTEM	
LETTER SYM	DESCRIPTION
ML	MEDIUM LIQUIDITY SILT
CL	CLAY
OL	OVERLYMPHATIC CLAY
OH	ORGANIC CLAY
PT	PEAT AND OTHER HIGHLY ORGANIC SOILS
CE	CLAYEY SILT
CH	CLAYEY SAND
SH	SANDY SILT
SW	WELL SORTED SAND
SP	POORLY SORTED SAND
SM	MEDIUM SAND
SC	CLAYEY SAND



66958

107V3989

NEVADA DEPARTMENT OF TRANSPORTATION
MATERIALS AND TESTING DIVISION
Geotechnical Section

**LAMB BOULEVARD
STORM DRAINS
LOG OF TEST BORINGS**

BRIDGE NO.	MILE POST	E.A. NO.	SHEET	OF
		71524	1	3

REVISION DATE: (PRELIMINARY STAGE ONLY)

FIELD STUDY BY N
DRAWN BY C
CHECKED BY M.S.
Approved
Recommended by