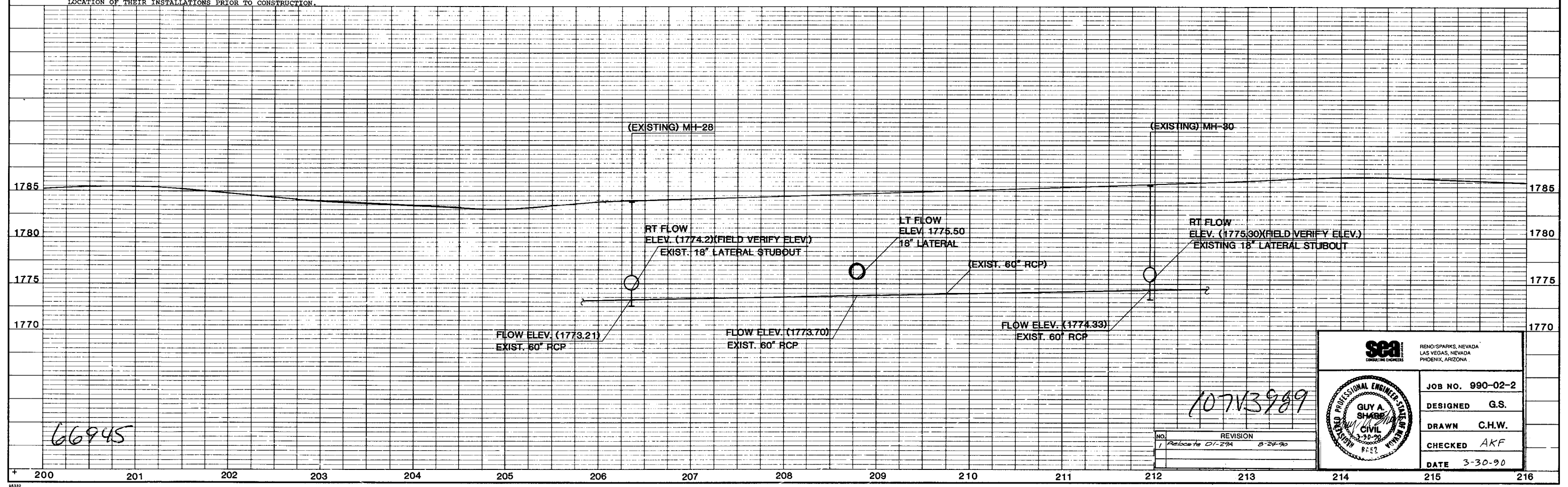


- GENERAL NOTES:
- FOR STORM DRAIN BEDDING DETAILS SEE SHEET NO. 26.
 - FOR STORM DRAIN SCHEDULE SEE SHEET NO. SD-9 THRU SD-13.
 - FOR DROP INLET LATERAL PROFILES SEE SHEET NO. SD-14 THRU SD-19.
 - THE LOCATIONS OF THE UNDERGROUND FACILITIES SHOWN IN PROFILE ARE APPROXIMATE AND ARE BASED UPON RECORD DRAWINGS FROM THE FACILITY OWNERS. IT SHALL BE THE RESPONSIBILITY OF THE CONTRACTOR TO LOCATE ALL EXISTING UNDERGROUND FACILITIES WHETHER SHOWN OR NOT, AND TO NOTIFY ALL FACILITY OWNERS TO VERIFY IN THE FIELD THE LOCATION OF THEIR INSTALLATIONS PRIOR TO CONSTRUCTION.



66945

107V3989

NO.	REVISION
1	Relocate DI-29A 8-24-90

	RENO/SPARKS, NEVADA LAS VEGAS, NEVADA PHOENIX, ARIZONA
	JOB NO. 990-02-2 DESIGNED G.S. DRAWN C.H.W. CHECKED AKF DATE 3-30-90

