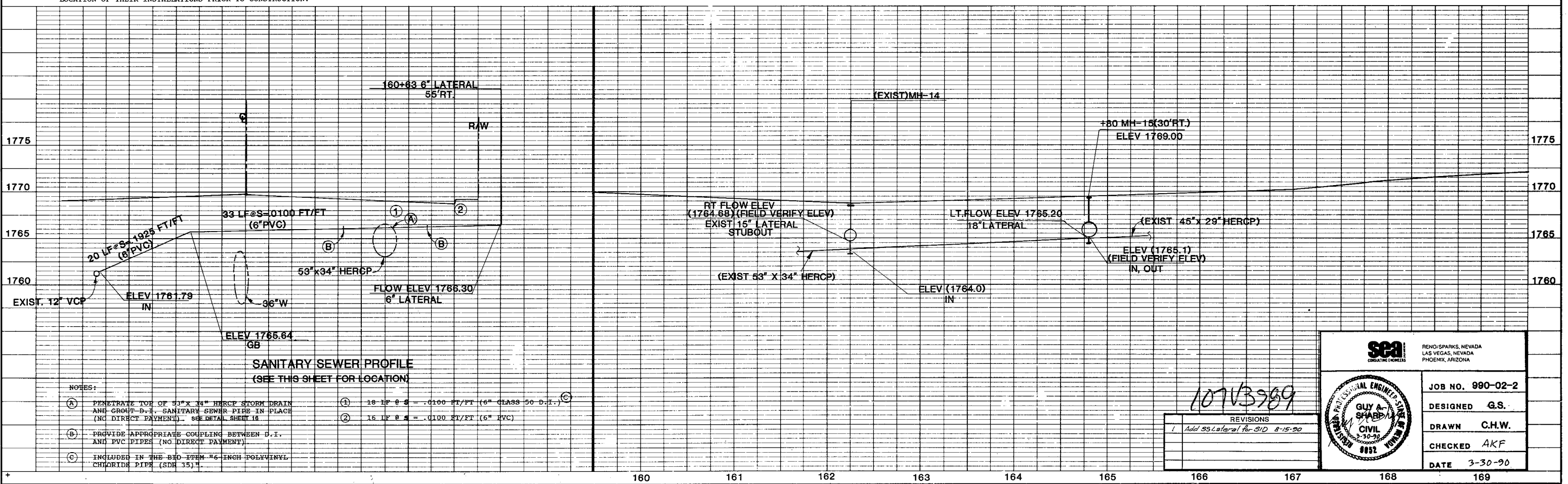


GENERAL NOTES:

- FOR STORM DRAIN BEDDING DETAILS SEE SHEET NO. 26.
- FOR STORM DRAIN SCHEDULE SEE SHEET NO. SD-9 THRU SD-13.
- FOR DROP INLET LATERAL PROFILES SEE SHEET NO. SD-14 THRU SD-19.
- THE LOCATION OF THE UNDERGROUND FACILITIES SHOWN IN PROFILE ARE APPROXIMATE AND ARE BASED UPON RECORD DRAWINGS FROM THE FACILITY OWNERS. IT SHALL BE THE RESPONSIBILITY OF THE CONTRACTOR TO LOCATE ALL EXISTING UNDERGROUND FACILITIES WHETHER SHOWN OR NOT, AND TO NOTIFY ALL FACILITY OWNERS TO VERIFY IN THE FIELD THE LOCATION OF THEIR INSTALLATIONS PRIOR TO CONSTRUCTION.
- FOR SANITARY SEWER SCHEDULE, SEE SHEET NO. SS-4 AND SS-5.
- FOR SANITARY SEWER BEDDING DETAILS, SEE SHEET NO. 25.
- FOR PROFILE SEE THIS SHEET.

PLANTMIX PATCH*
* SEE DETAIL "C" ON SHEET 2A FOR PLANTMIX PATCH DETAILS



SANITARY SEWER PROFILE
(SEE THIS SHEET FOR LOCATION)

- NOTES:**
- (A) PENETRATE TOP OF 53" X 34" HERCP STORM DRAIN AND GROUT D.I. SANITARY SEWER PIPE IN PLACE (NO DIRECT PAYMENT). SEE DETAIL SHEET 16.
 - (B) PROVIDE APPROPRIATE COUPLING BETWEEN D.I. AND PVC PIPES (NO DIRECT PAYMENT).
 - (C) INCLUDED IN THE BID ITEM #6 INCH POLYVINYL CHLORIDE PIPE (SDR 35) #.
 - (1) 18 LF @ S = .0100 FT/FT (6" CLASS 50 D.I.)
 - (2) 16 LF @ S = .0100 FT/FT (6" PVC)

SEA
CREATING VALUE

RENO/SPARKS, NEVADA
LAS VEGAS, NEVADA
PHOENIX, ARIZONA

JOB NO. 990-02-2

DESIGNED **G.S.**

DRAWN **C.H.W.**

CHECKED **AKF**

DATE **3-30-90**

107V3989

REVISIONS	
1	Add SS Lateral for SID 8-15-90

66942