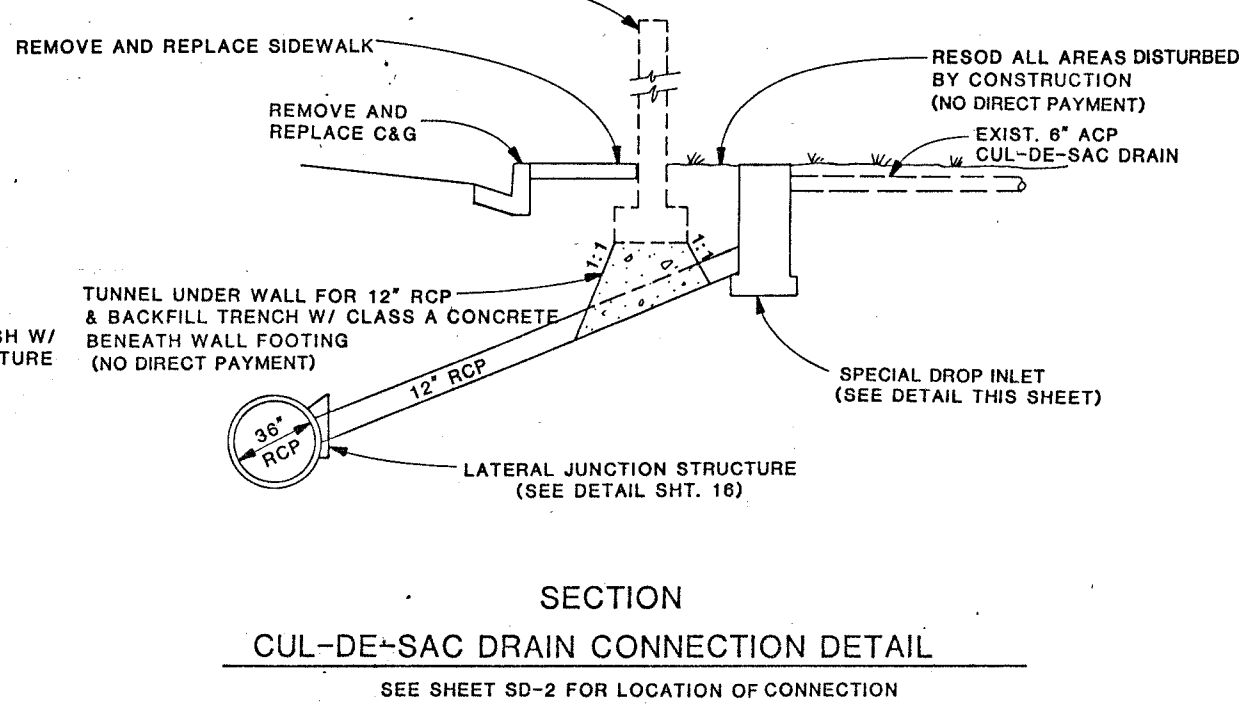


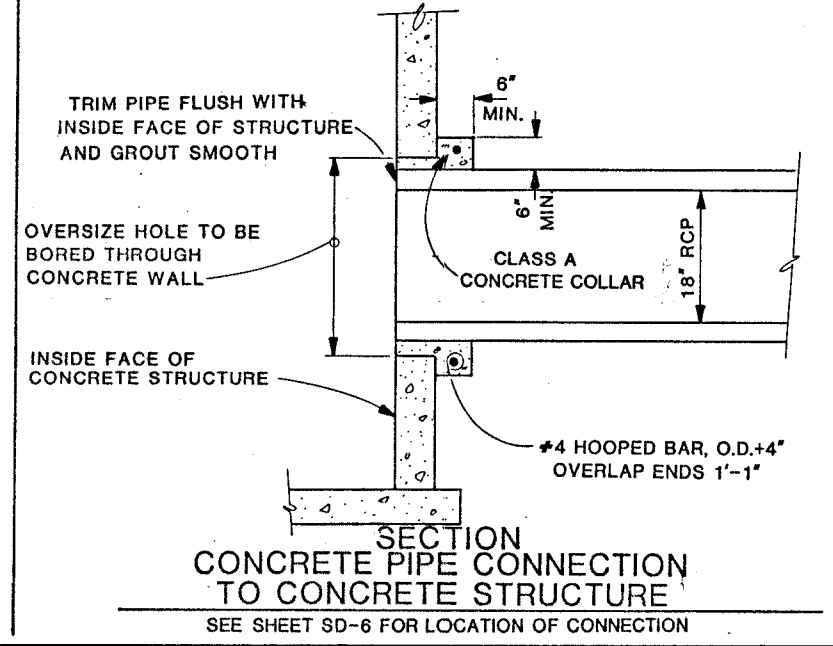
SECTION
SPECIAL DROP INLET

*L1" 129+16 LT.



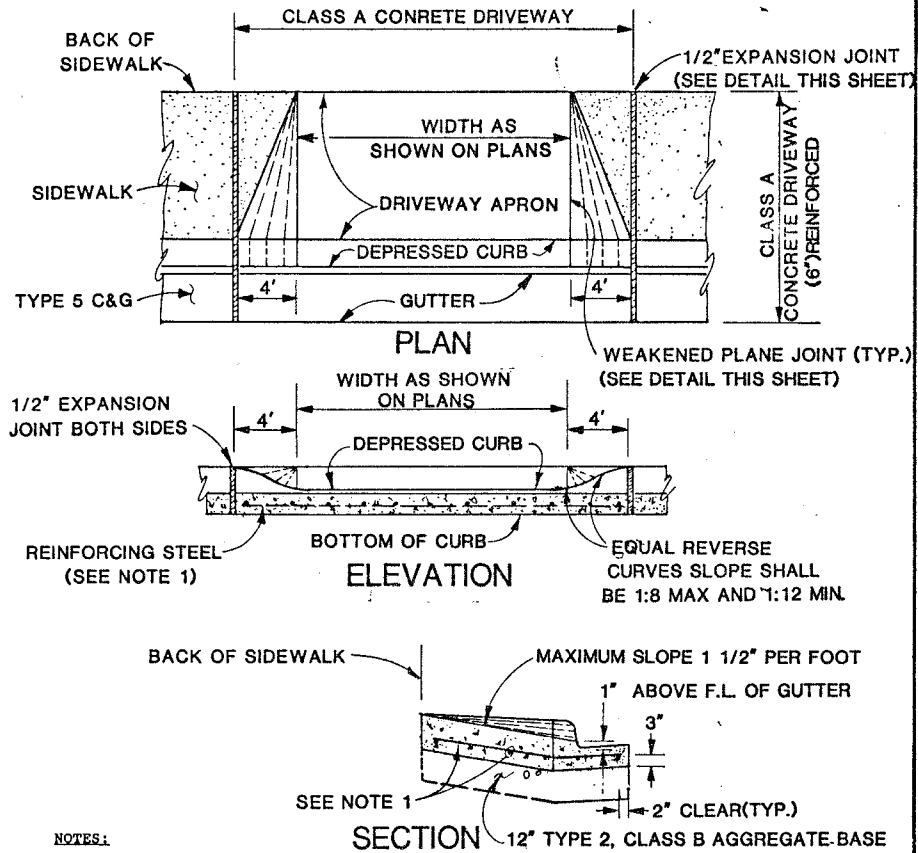
SECTION
CUL-DE-SAC DRAIN CONNECTION DETAIL

SEE SHEET SD-2 FOR LOCATION OF CONNECTION



SECTION
CONCRETE PIPE CONNECTION TO CONCRETE STRUCTURE

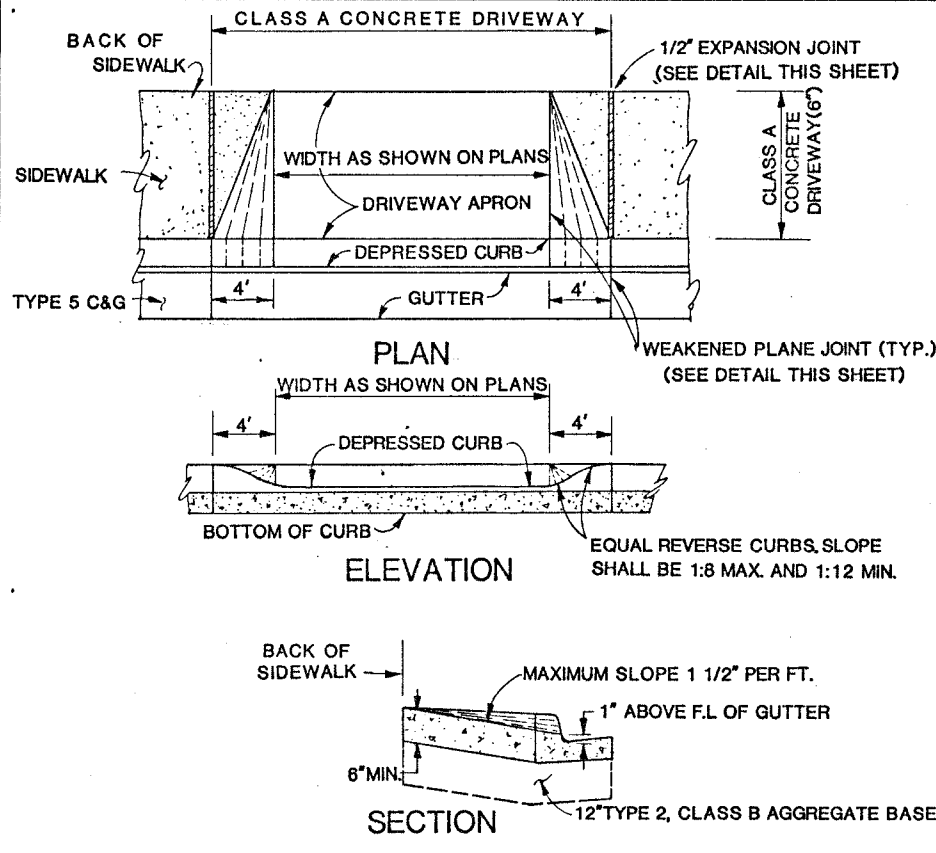
SEE SHEET SD-6 FOR LOCATION OF CONNECTION



SECTION 12\"/>

- NOTES:
- NO. 4 BARS AT 16" OC BOTH WAYS EXTENDING INTO GUTTER NO. 4 BARS SHALL BE PLACED 3" ABOVE BOTTOM OF CONCRETE SUPPORTED BY NONFERROUS CHAIRS APPROVED BY THE DEPARTMENT.
 - WHEN CONSTRUCTING DRIVEWAY WHERE CURB AND GUTTER EXISTS, COMPLETELY REMOVE INTERFERING PORTIONS OF EXISTING CURB AND GUTTER. DRIVEWAY SHALL BE MONOLITHIC TO A.C. LINE.
 - CONCRETE SHALL BE CLASS A.
 - REINFORCING STEEL IS INCLUDED IN THE BID ITEM "CLASS A CONCRETE DRIVEWAY (6") REINFORCED".
 - WEAKENED PLANE JOINTS SHALL BE EQUALLY SPACED AT 15' MAX. INTERVALS, SEE DWG. NO. 234.

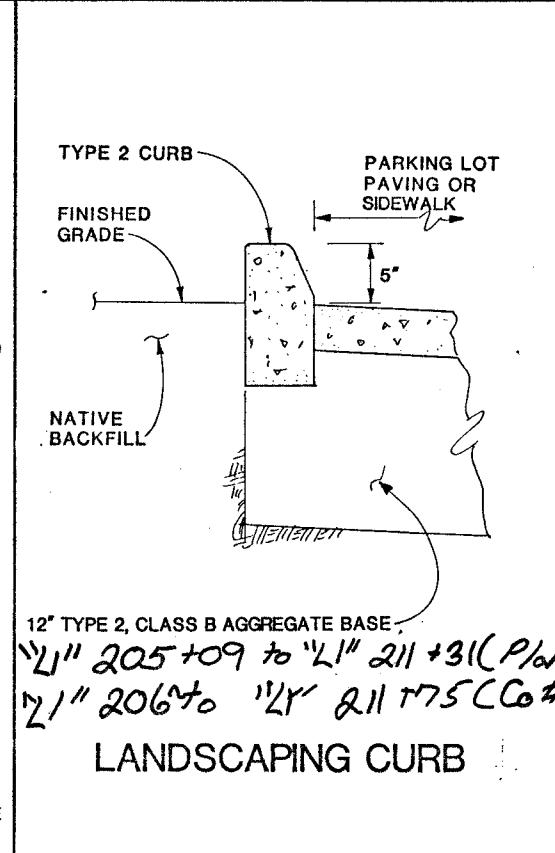
66931 COMMERCIAL DRIVEWAY



SECTION 12\"/>

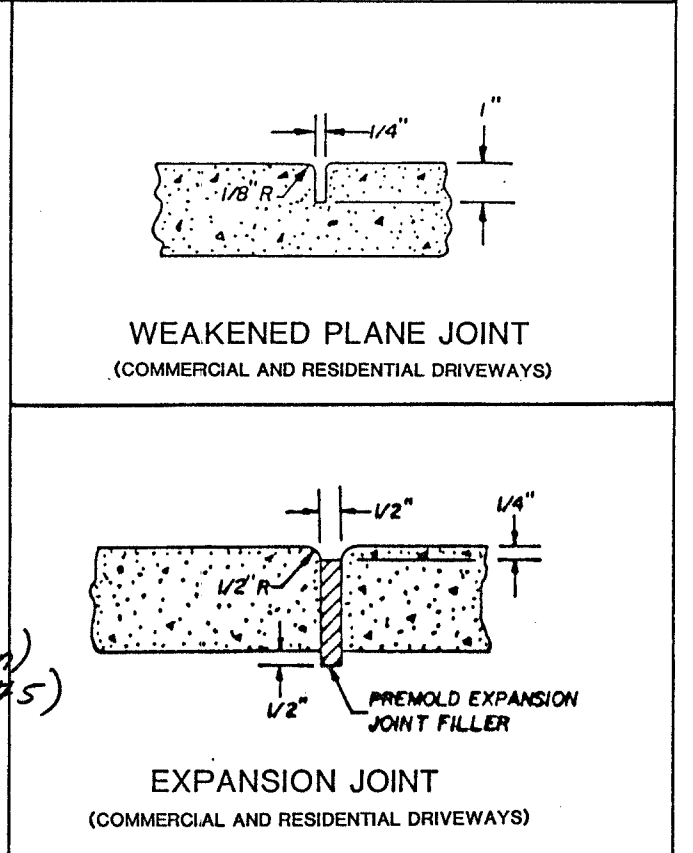
- NOTES:
- WHEN CONSTRUCTING DRIVEWAY WHERE CURB AND GUTTER EXISTS, COMPLETELY REMOVE INTERFERING PORTIONS OF EXISTING CURB AND GUTTER. DRIVEWAY MAY BE MONOLITHIC TO A.C. LINE.
 - CONCRETE SHALL BE CLASS A.
 - WEAKENED PLANE JOINTS SHALL BE UNIFORMLY PLACED BETWEEN 5' AND 7' INTERVALS.

RESIDENTIAL DRIVEWAY



12" TYPE 2, CLASS B AGGREGATE BASE
 1 1/2" 205+09 to 1 1/2" 211+31 (Plan)
 2 1/2" 206+0 to 2 1/2" 211+75 (Co #5)

LANDSCAPING CURB



WEAKENED PLANE JOINT
(COMMERCIAL AND RESIDENTIAL DRIVEWAYS)

EXPANSION JOINT
(COMMERCIAL AND RESIDENTIAL DRIVEWAYS)

REN0 SPARKS, NEVADA
 LAS VEGAS, NEVADA
 PHOENIX, ARIZONA

DESIGNED G.S.
 DRAWN J.H.
 CHECKED J.K.
 DATE 3-30-90

STATE OF NEVADA
 DEPARTMENT OF TRANSPORTATION

SPECIAL DETAILS
 107V3989