

### ELECTROLIER SCHEDULE

POLE NO	STATION	MAST ARM LENGTH	NOTES
1	119+12	8'	2,3,7,9
2	119+72		1
3	120+52		2,3,7,9
4	120+94		1
5	121+64		2,3,7,9
6	121+95		1
7	122+69		1,9
8	122+86		1
9	123+74		1
10	124+23		1
11	124+78		1
12	125+54		1
13	126+04		1
14	126+61		1
15	127+30		1
16	127+73		1
17	128+56		1
18	128+84		1
19	129+77		1
20	129+87		1,9
21	130+66		2,3,9
22	131+40		1
23	131+87		2,3,9
24	132+63		1
25	133+04		2,3,9
26	133+81		1
27	134+26		2,3,9
28	135+03		1
29	135+47		2,3,9
30	136+21		1
31	136+68		2,3,9
32	137+31		1
33	137+77		2,3,9
34	138+36		1
35	138+81		1
36	139+87		1
37	139+89		1
38	140+84		1
39	141+00		1
40	141+82		1
41	142+20		1
42	145+57		1
43	146+05		1
44	146+72		1
45	147+25		5
46	147+87		1
47	148+54.20		5
48	149+04		1
49	149+64		5
50	150+26		1
51	150+79.87		5
52	151+38		1,2,3
53	152+09.87		3
54	152+63		1
55	153+39.87		3
56	153+83		1
57	154+49.51		3
58	155+03		1
59	155+89.51		3
60	156+22		1
61	157+29.51		3
62	157+68.71		3
63	158+69.51		3
64	159+08.71		3
65	160+09.51		3
66	160+48.71		3
67	161+49.51		5
68	161+88.71		3
69	162+70.80		5
70	163+28.71		3
71	163+85.78		5
72	164+47		1
73	164+96		1
74	165+29		1
75	166+16		1
76	166+60		1
77	167+34.14		3
78	167+81		1
79	168+49		1
80	169+00		1
81	169+74.66	8'	5
82	171+82	12'	2,6,1
83	172+56.98	12'	6

### ELECTROLIER SCHEDULE

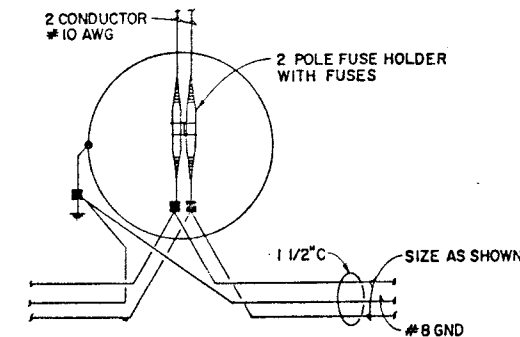
POLE NO	STATION	MAST ARM LENGTH	NOTES
84	173+22.02	12'	6
85	173+86.98		6
86	174+62.02		6
87	175+16.98		6
88	175+82.02		6
89	176+41.98		4,6
90	177+02.02		6
91	177+70.54		4,6
92	178+32.02		6
93	178+90.06		4,6
94	179+62.02		6
95	180+35.06		6
96	180+92		1,4,6
97	181+80.06		6
98	182+12		1,4,6
99	183+25.06		6
100	183+32		1,4,6
101	184+56.64		6
102	184+70.06		6
103	185+71.76		6
104	186+22		1,4,6
105	186+66.76		4,6
106	187+19		1,4,6
107	188+01.63		4,6,8
108	188+44		1,4,6
109	188+90.58		4,6,8
110	189+99.21		6,8
111	190+30.58		6,8
112	191+15.21		6,8
113	191+70.58		6,8
114	192+36		4,6,8
115	193+10.58		6,8
116	193+71		4,6,8
117	194+41		1,4,6
118	194+96.84		6,8
119	192+97		1,4,6
120	199+43.21		6,8
121	199+61.84		6,8
122	200+73.21		6,8
123	201+01.84		6,8
124	202+03.21		6,8
125	202+41.84		6,8
126	203+42.21		6
127	203+90.84		6
128	204+77		1,4,6
129	205+26		1,4,6
130	205+97		4,6,8
131	206+47		1,4,6
132	207+02		4,6,8
133	207+67		1,4,6
134	208+17		4,6,8
135	208+92		1,4,6
136	209+37		4,6,8
137	210+12		1,4,6
138	210+57		4,6,8
139	211+33		4,6,8
140	211+92		1,4,6
141	213+03.71		6,8
142	213+12		1,4,6
143	214+39		1,4,6
144	214+73.71		6,8
145	215+54		1,4,6
146	216+43.71		6
147	216+22.87		6,8
148	217+44.87		6,8
149	218+13.71		6,8
150	218+97.87		6,8
151	219+83.71		6,8
152	220+52.87		6,8
153	221+53.71		6,8
154	222+22.87		6,8
155	223+01.71		6,8
156	224+71		1,4,6
157	"C" 119+94	12'	7
158	"C" 118+83	8'	7
159	"C" 117+42		7
160	"C" 114+10		7
161	"C" 112+75		7
162	"C" 111+51		7
163	"C" 110+24		7
164	"C" 108+93		7
165	"C" 107+86		7

#### NOTES

- MOVE ELECTROLIER (POLE, ARM, AND LUMINAIRE) TO BACK OF SIDEWALK. SEE DETAIL 1 SHEET T-1.
- SALVAGE ELECTROLIER.
- INSTALL ELECTROLIER RELOCATED FROM NORTH OF BONANZA STREET.
- RELOCATE ELECTROLIER TO SOUTH OF BONANZA OR SALVAGE.
- LEAVE AS IS.
- FURNISH AND INSTALL NEW ELECTROLIER WITH 12' ARM.
- MOVE ELECTROLIER TO BACK OF NEW SIDEWALK. SEE DETAIL 1 SHEET T-1.
- INSTALL ELECTROLIER AT BACK OF SIDEWALK.
- REPLACE EXISTING OVERHEAD POWER WITH UNDERGROUND AS SHOWN.

#### ELECTROLIER SCHEDULE NOTES:

- SEE SHEET T-1 FOR POLE TYPES AND LUMINAIRE NOTES.
- POLES SHALL BE LOCATED AT THE BACK EDGE OF THE SIDEWALK WITH FOUNDATIONS AT R/W LINE.
- IT SHALL BE THE CONTRACTOR'S RESPONSIBILITY TO ASCERTAIN THE LOCATION OF ALL POLES, CONDUIT AND PULL BOXES SO AS NOT TO CONFLICT WITH NEW AND EXISTING UTILITIES AND DRAINAGE STRUCTURES.



TYPICAL POLE BASE WIRING DIAGRAM

66974

107V3989

Kennedy/Jenks/Chilton  
Consulting Engineers  
3233 West Charleston Boulevard, Suite 110  
Las Vegas, Nevada 89102  
702-870-7502

STATE OF NEVADA  
DEPARTMENT OF TRANSPORTATION

JOB No. 990-02-2  
DESIGNED DKB  
DRAWN DMS  
CHECKED HDW  
DATE 12/13/89

STATE OF NEVADA  
DEPARTMENT OF TRANSPORTATION

LAMB BOULEVARD  
STREET LIGHTING