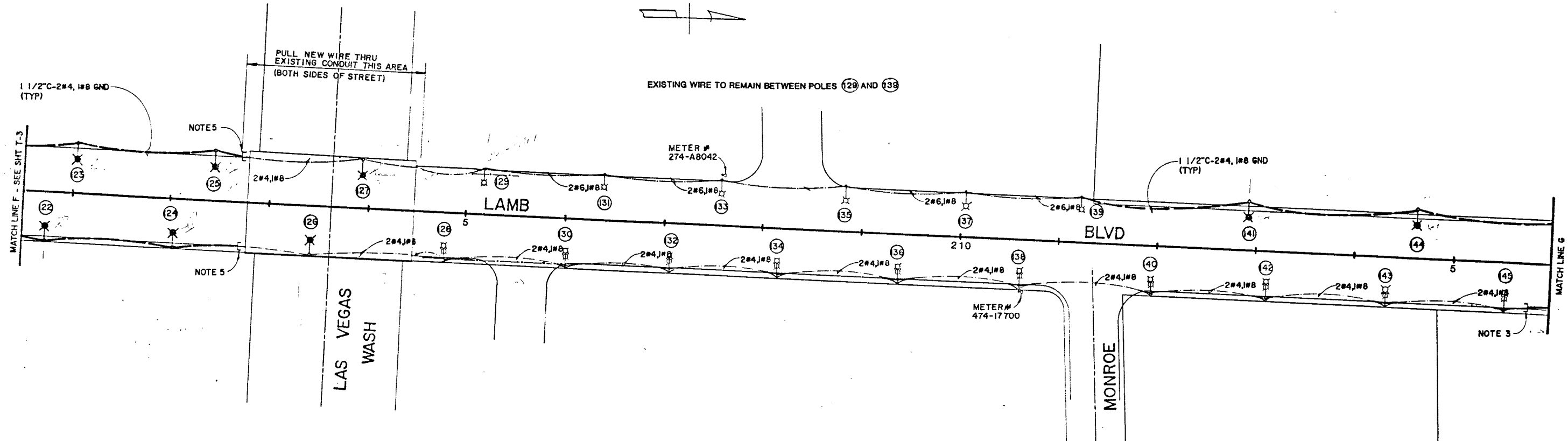


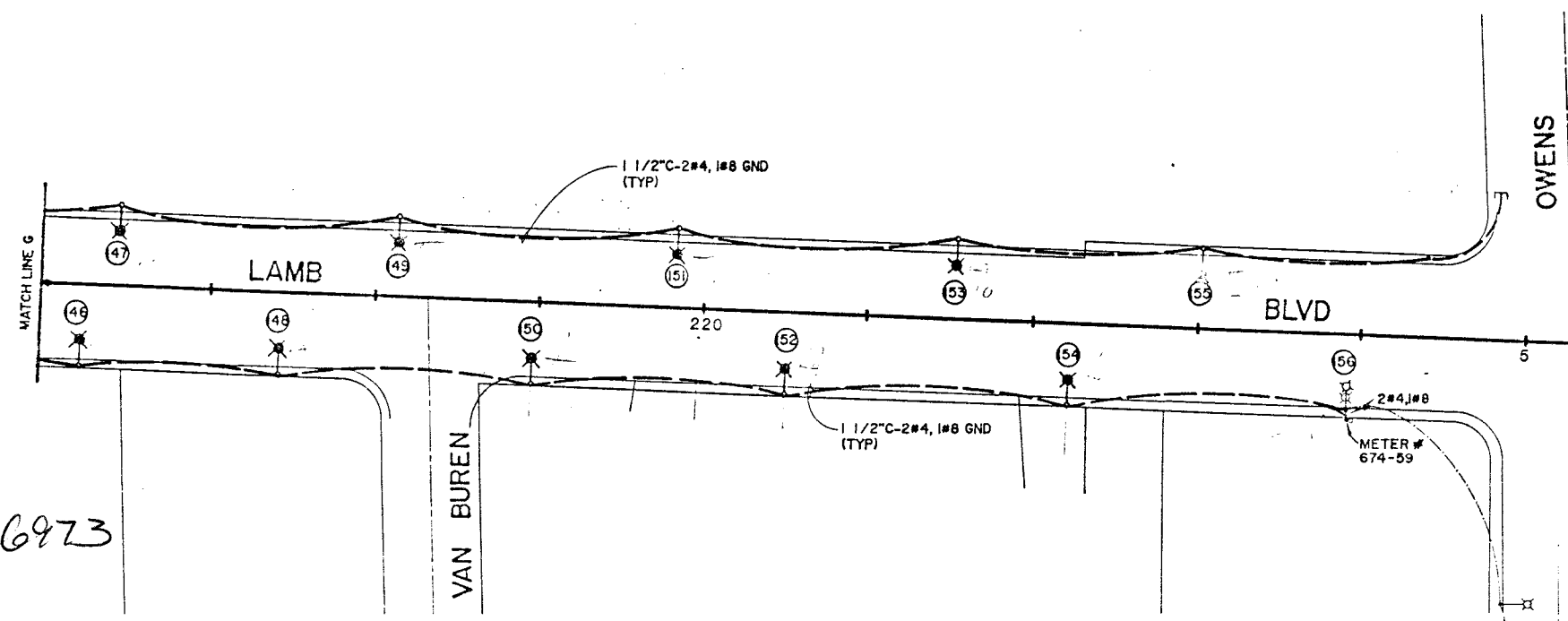
FED. RD. REG. NO.	STATE	PROJECT NO.	COUNTY	SHEET NO.
9	NEVADA	M-610(5)	CLARK	T-4



NOTES:

1. ALL NUMBERED ELECTROLIERS SEE SHEET T-5 FOR CIRCUIT SCHEDULE AND ELECTROLIER SCHEDULE.
2. WHERE EVER PRACTICAL INSTALL NEW CONDUIT UNDER THE SIDEWALK. WHERE NEW CONDUIT IS REQUIRED AND EXISTING SIDEWALK IS TO REMAIN IN PLACE, INSTALL NEW CONDUIT UNDER ROADWAY PAVEMENT.
3. ALL NEW POLE BASES TO BE LOCATED AT BACK EDGE OF SIDEWALK.
4. SEE SHEET T-5 FOR TYPICAL POLE BASE WIRING DIAGRAM.
5. FIND AND CONNECT TO EXISTING CONDUIT AT THIS LOCATION.

SCALE: 1" = 50'



66973

107V3989

RENO, SPARKS, NEVADA  
LAS VEGAS, NEVADA  
PHOENIX, ARIZONA

**PROFESSIONAL ENGINEER**  
B. REITH  
BAIRD  
E.E./P.  
No. 08308

**DESIGNED DKB**

**DRAWN DMS**

**CHECKED HDW**

**DATE 12/13/89**

Kennedy/Jenks/Chilton  
Consulting Engineers  
3233 West Charleston Boulevard, Suite 110  
Las Vegas, Nevada 89102  
702-870-2502

STATE OF NEVADA  
DEPARTMENT OF TRANSPORTATION

**LAMB BOULEVARD  
STREET LIGHTING**