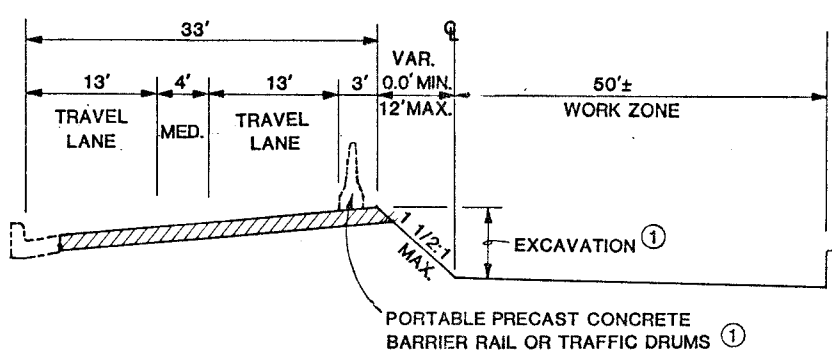


- ① SEE NOTE #1 OF TYPICAL PORTABLE PRECAST BARRIER RAIL-TRAFFIC DRUM INSTALLATION DETAIL FOR REQUIREMENTS.
- ② ANGLE OF REPOSE
- ③ SEE EXCEPTION (B)

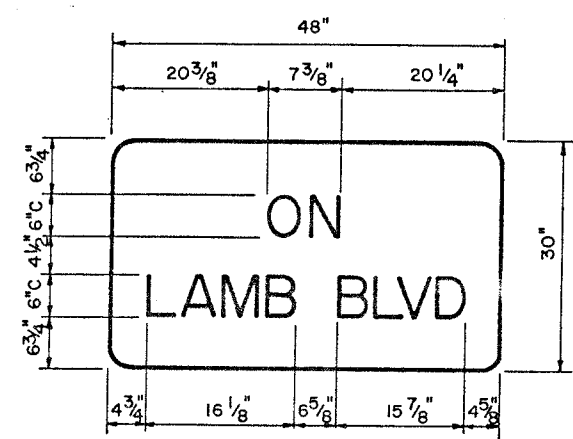
TEMPORARY TRAFFIC CONTROL PAVING SECTION OF IMPROVEMENT



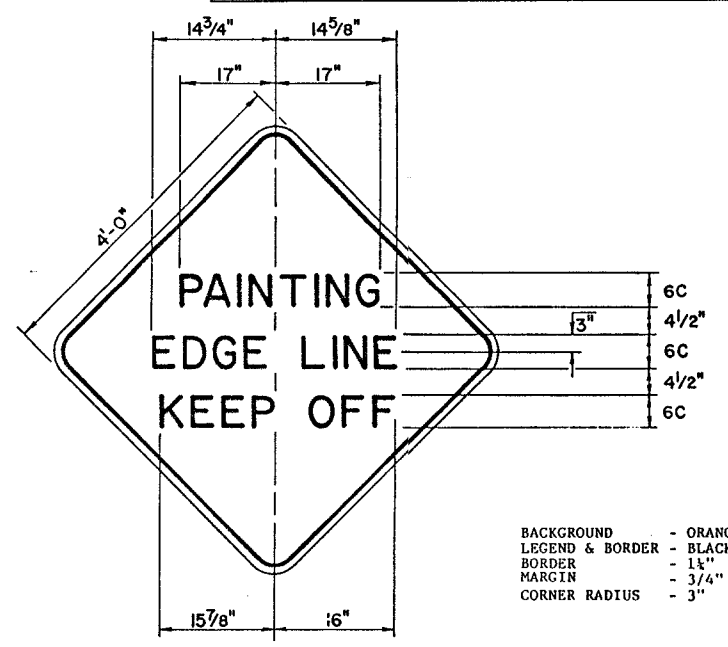
TYPICAL PORTABLE PRECAST CONCRETE BARRIER RAIL - TRAFFIC DRUM INSTALLATION DETAIL

- ① PORTABLE PRECAST CONCRETE BARRIER RAIL REQUIRED FOR TRAFFIC CONTROL WHERE EXCAVATION IN ADJACENT WORK ZONE EXCEEDS 18-INCHES. TRAFFIC DRUMS MAY BE USED FOR TRAFFIC CONTROL WHERE EXCAVATION IN ADJACENT WORK ZONE IS 18-INCHES OR LESS.

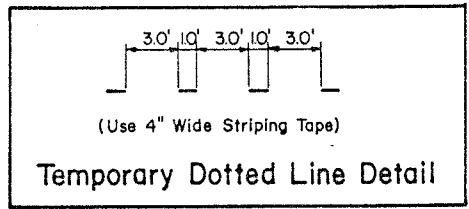
66995



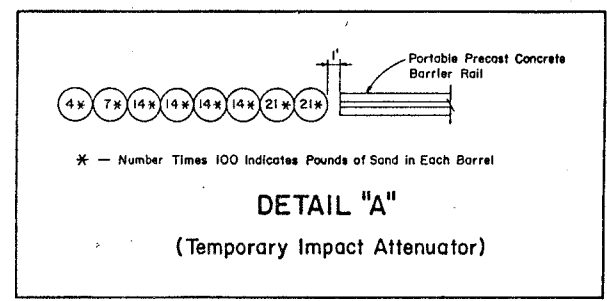
- BACKGROUND - ORANGE
- LEGEND, BORDER - BLACK
- BORDER = 1"
- CORNER RADIUS = 3"



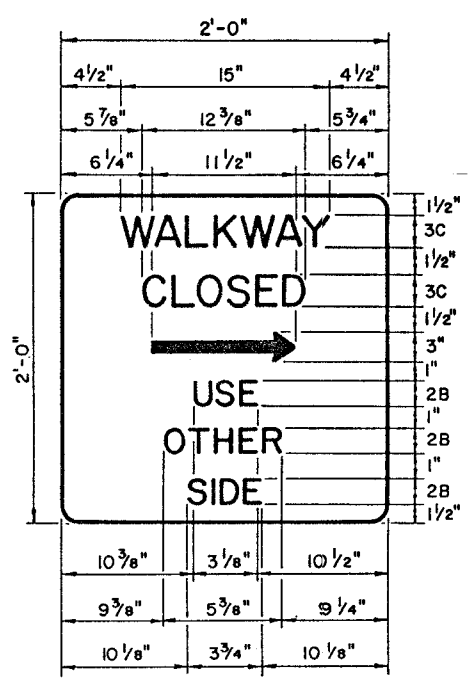
- BACKGROUND - ORANGE
- LEGEND & BORDER - BLACK
- BORDER - 1 1/4"
- MARGIN - 3/4"
- CORNER RADIUS - 3"



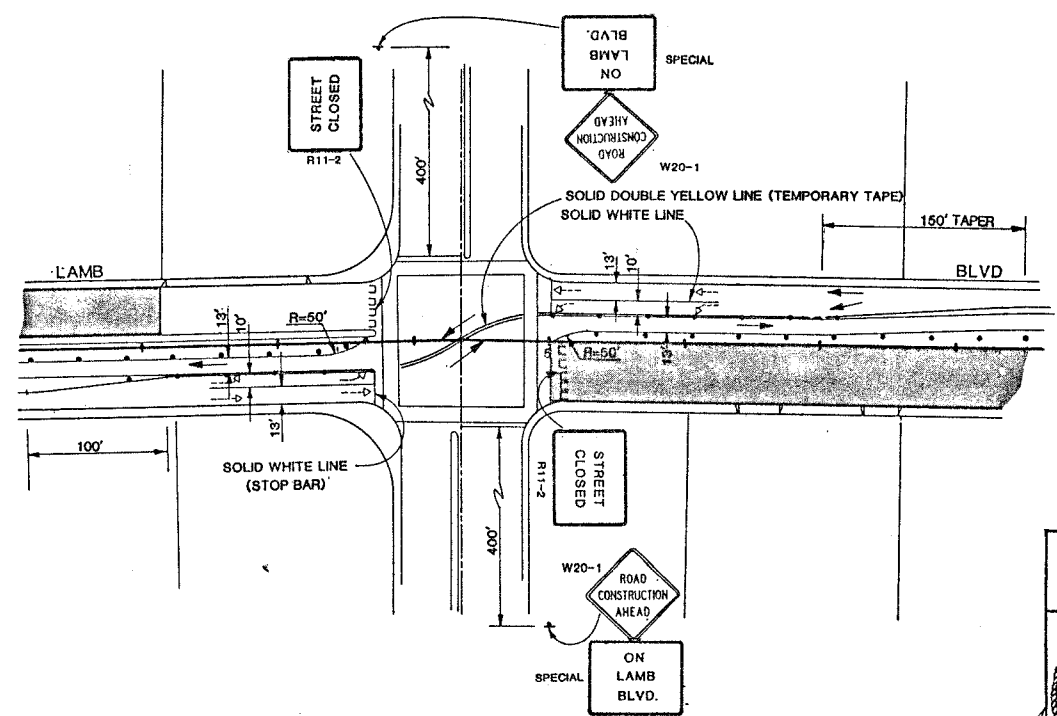
Temporary Dotted Line Detail



DETAIL "A"
(Temporary Impact Attenuator)



- BACKGROUND WHITE
- LEGEND, BORDER BLACK
- BORDER 1"
- CORNER RADIUS 3"



TYPICAL INTERSECTION CROSS OVER

	JOB NO. 990-02-2
	DESIGNED F.G.A.II
	DRAWN C.H.W.
	CHECKED GS
	DATE 3-30-90

STATE OF NEVADA
DEPARTMENT OF TRANSPORTATION

TRAFFIC CONTROL PLAN
LAMB BLVD.
107V3989
SPECIAL DETAILS