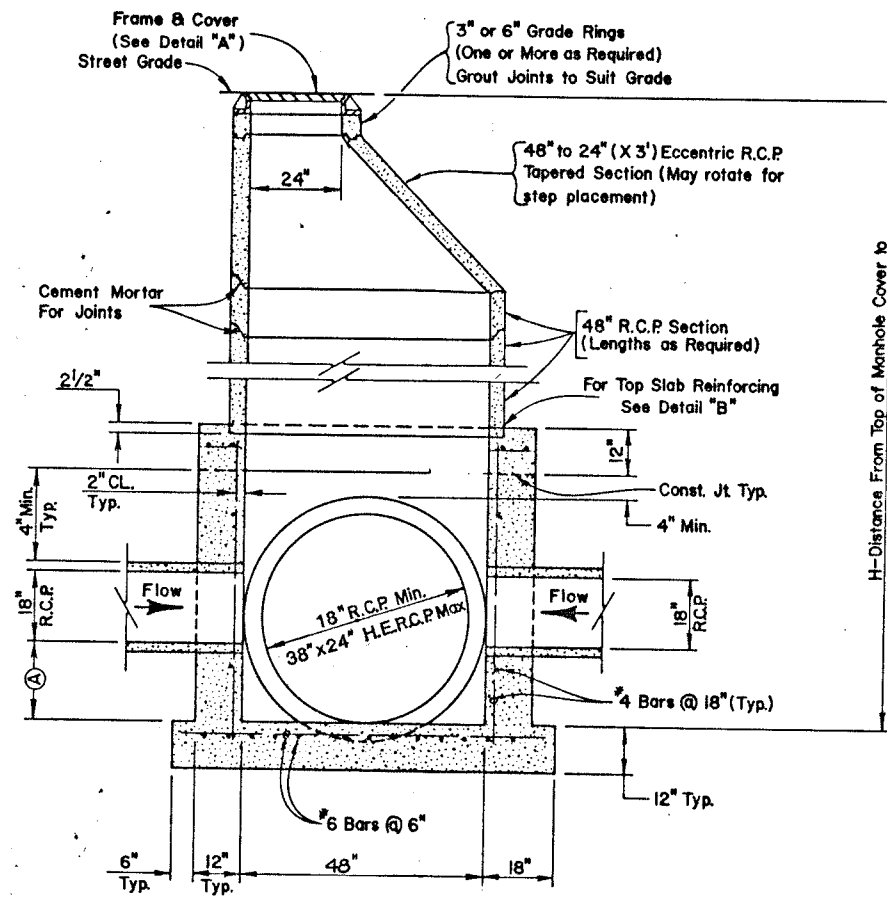
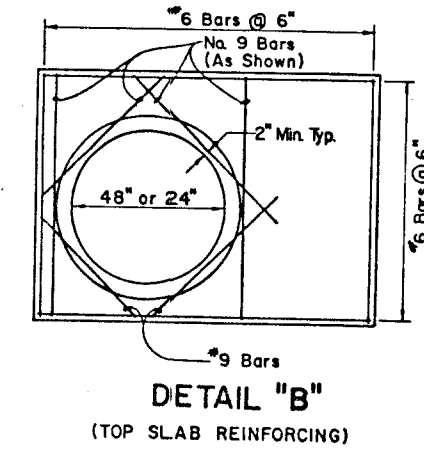


(A) - See Storm Drain Schedule For Invert Elevation

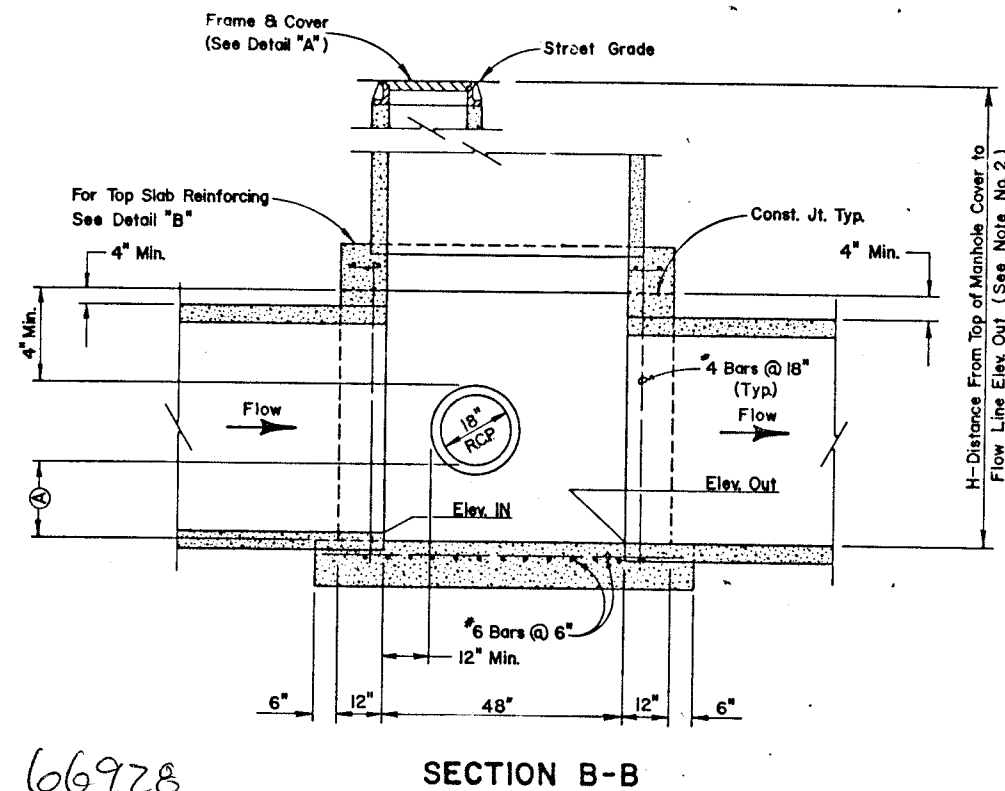


SECTION A-A

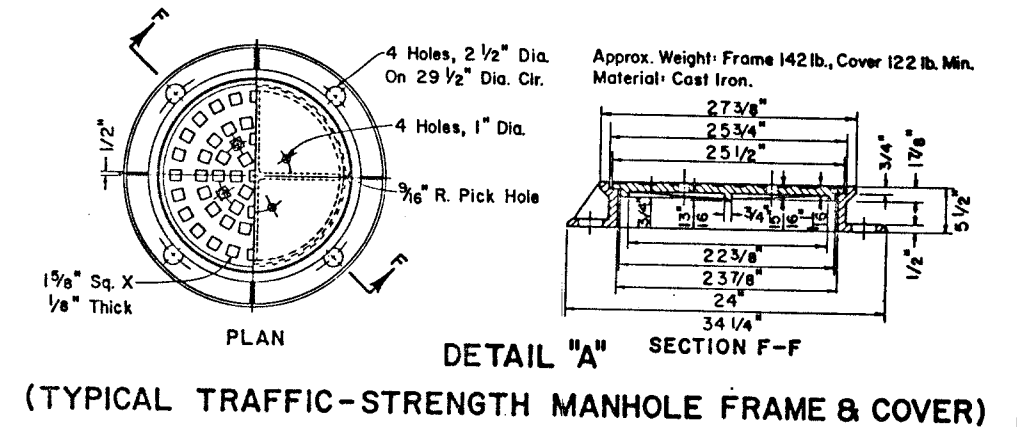
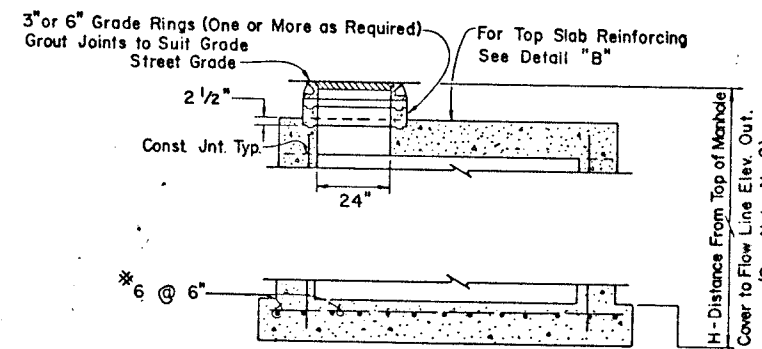


GENERAL NOTES:

1. ALL CONCRETE SHALL BE CLASS A.
2. FOR VALUES OF "H" SEE STORM DRAIN SCHEDULE OR STRUCTURE LIST IN CONTRACT PLANS. "H" IS THE DIFFERENCE IN ELEVATION BETWEEN THE OUTFLOW PIPE INVERT ELEVATION AND THE TOP OF MANHOLE ELEVATION AT STREET GRADE.
3. MANHOLE STEPS SHALL CONFORM TO ASTM STANDARD SPECIFICATION C-478 WITH MAXIMUM SPACING OF 16" AND 4" CLEAR DISTANCE FROM THE MANHOLE WALL. THE STEP MUST BE A 10" MINIMUM WIDTH.
4. MANHOLE COVER SHALL BEAR CITY OF LAS VEGAS IDENTIFICATION AND SYSTEM FUNCTION.



SECTION B-B



	RENO/SPARKS, NEVADA LAS VEGAS, NEVADA PHOENIX, ARIZONA	STATE OF NEVADA DEPARTMENT OF TRANSPORTATION
	JOB NO. 990-02-2 DESIGNED G.S. DRAWN C.H.W. CHECKED J.C.F. DATE 3-30-90	107V3909 SPECIAL DETAIL (MODIFIED TYPE 4 MANHOLE)

66928