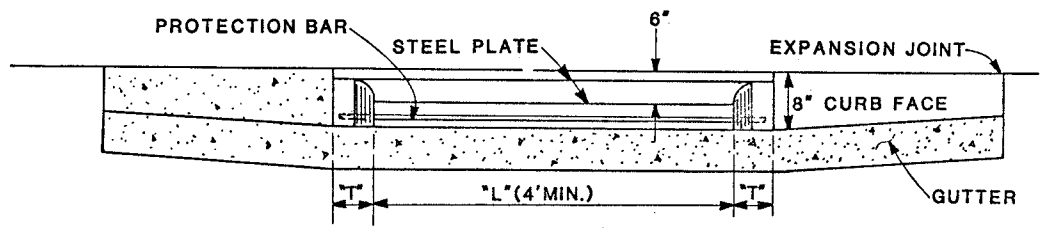
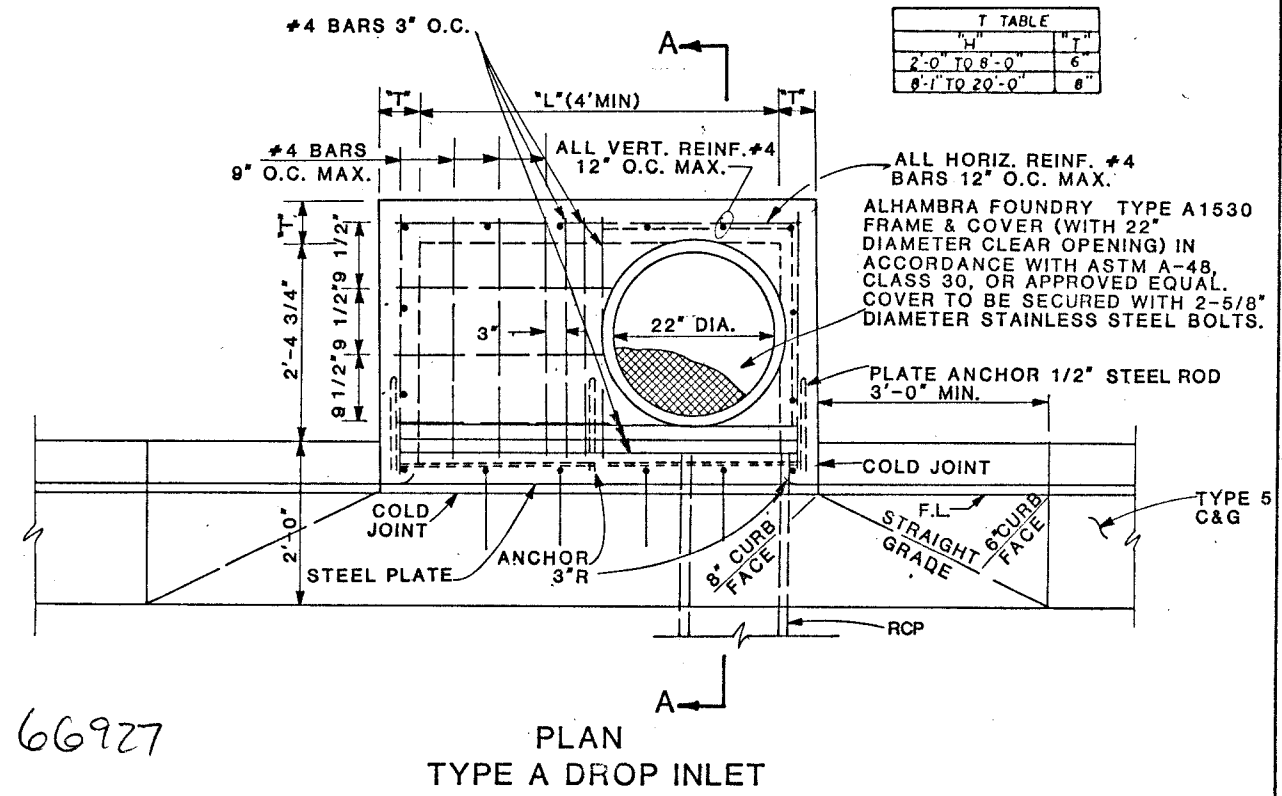


SECTION A-A

- NOTES:
1. ALL CONCRETE SHALL BE CLASS A.
 2. FOR VALUES OF "H" AND "L" SEE STORM DRAIN SCHEDULE.
 3. "H" IS THE DIFFERENCE IN ELEVATION BETWEEN THE OUTLET PIPE FLOWLINE AND THE NORMAL GUTTER GRADE LINE AT THE CURB FACE.
 4. FOR DROP INLET CONFIGURATIONS WITH TWO PIPES - INFLOW PIPE INVERT ELEVATION SHALL BE MIN. 0.1' ABOVE OUTFLOW PIPE INVERT ELEVATION.
 5. OUTLET PIPE SHALL BE TRIMMED FLUSH WITH INSIDE FACE OF INLET.
 6. FOR STEEL PLATE AND PROTECTION BAR DETAILS, SEE THIS SHEET.

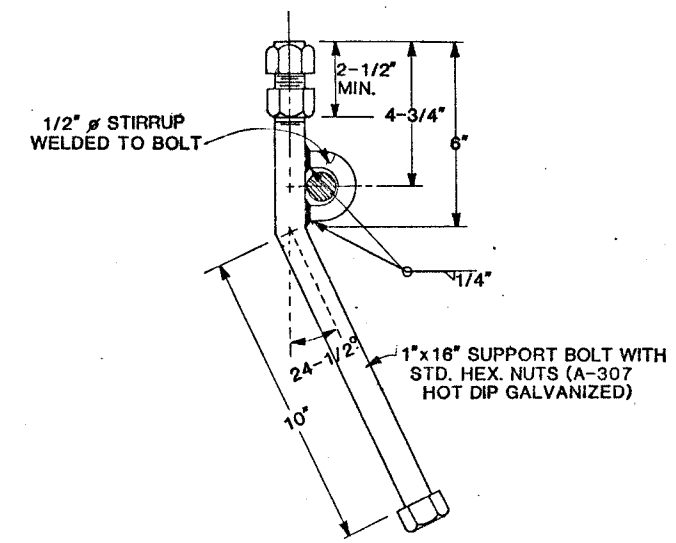


ELEVATION

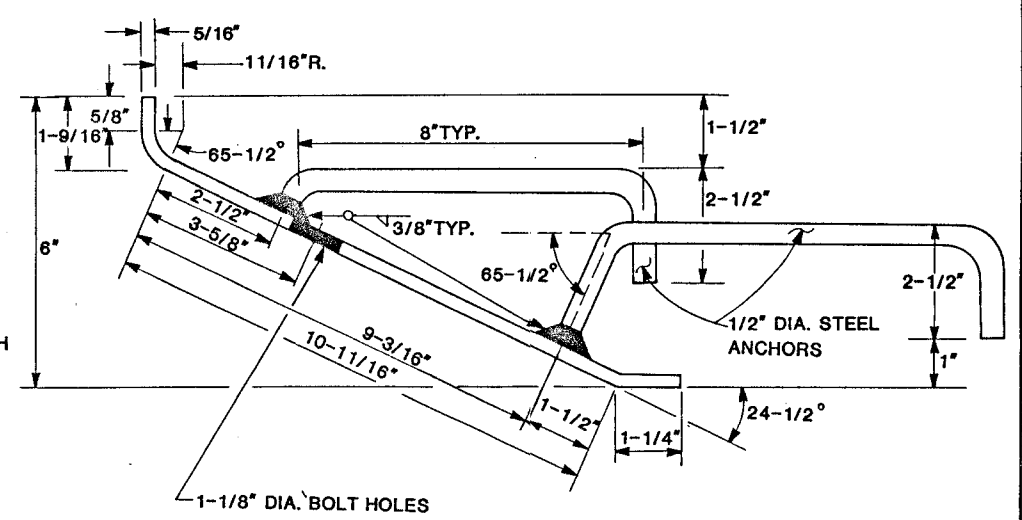


PLAN TYPE A DROP INLET

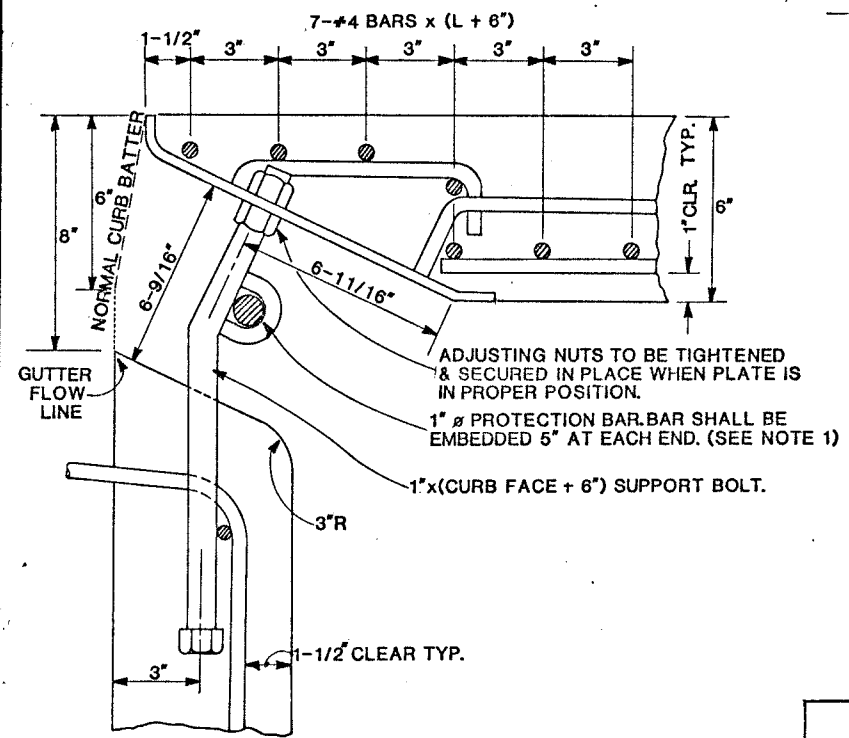
T TABLE	
"H"	"L"
2'-0" TO 8'-0"	6"
8'-1" TO 20'-0"	8"



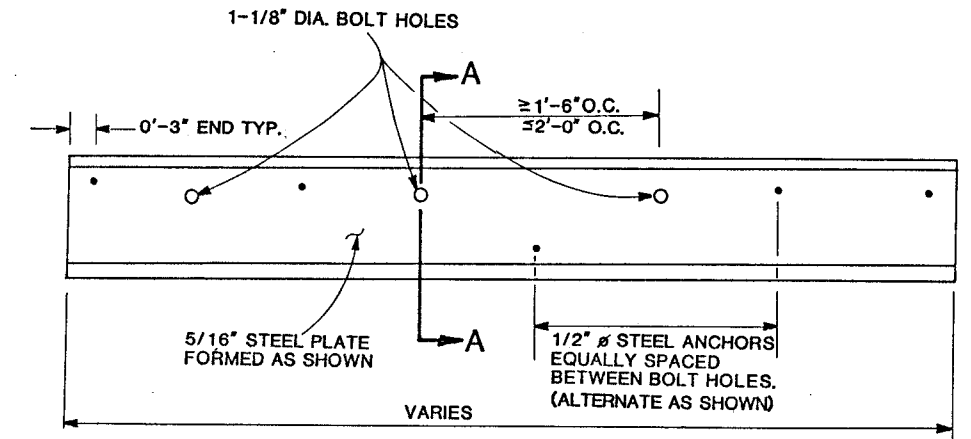
BOLT DETAIL



SECTION A-A



STEEL PLATE AND PROTECTION BAR



STEEL PLATE DETAIL

- NOTES:
1. PROTECTION BAR SHALL BE REQUIRED ON ALL INLETS AND SHALL BE PLACED PARALLEL TO THE STEEL FACE PLATE.
 2. SUPPORT BOLTS SHALL BE EQUALLY SPACED AT NOT MORE THAN 2'-0" O.C. AND NOT LESS THAN 1'-6" O.C.
 3. ALL EXPOSED METAL PARTS SHALL BE GALVANIZED AND GALVANIZING DAMAGED BY FABRICATION OR INSTALLATION SHALL RECEIVE TWO COATS OF ALUMINUM PAINT (GALVONOX OR EQUAL).
 4. #4 BARS X (L+6") SHALL BE IN ADDITION TO REINFORCING STEEL PER APPLICABLE DROP INLET STANDARD PLAN.

66927

RENO, SPARKS, NEVADA
LAS VEGAS, NEVADA
PHOENIX, ARIZONA

PROFESSIONAL ENGINEER
CIVIL
5-30-70

JOB NO. 990-02-2
DESIGNED GS
DRAWN J.S.
CHECKED J.L.E.
DATE 5-30-70

STATE OF NEVADA
DEPARTMENT OF TRANSPORTATION

107V3989

SPECIAL DETAILS
(TYPE A DROP INLET/
STEEL PLATE AND
PROTECTION BAR)