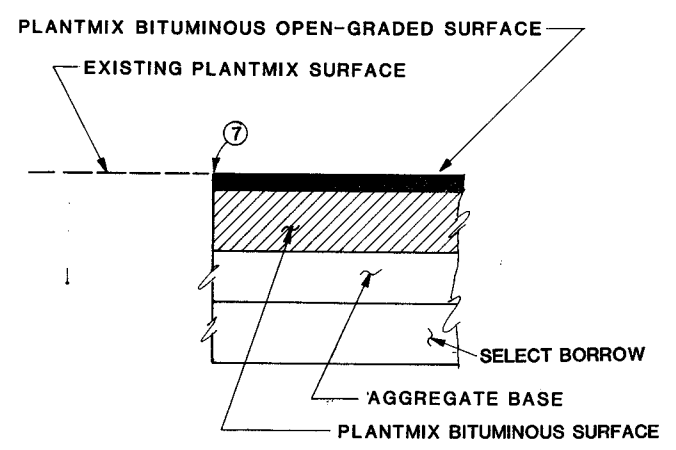


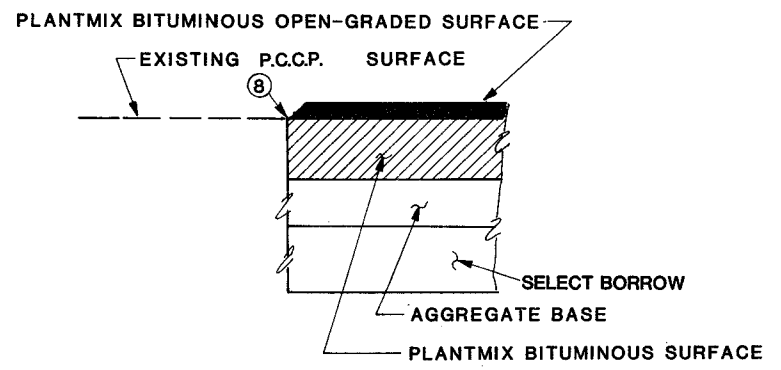
SECTION OF IMPROVEMENT

CONSTRUCTION TYPE CODE IOOO

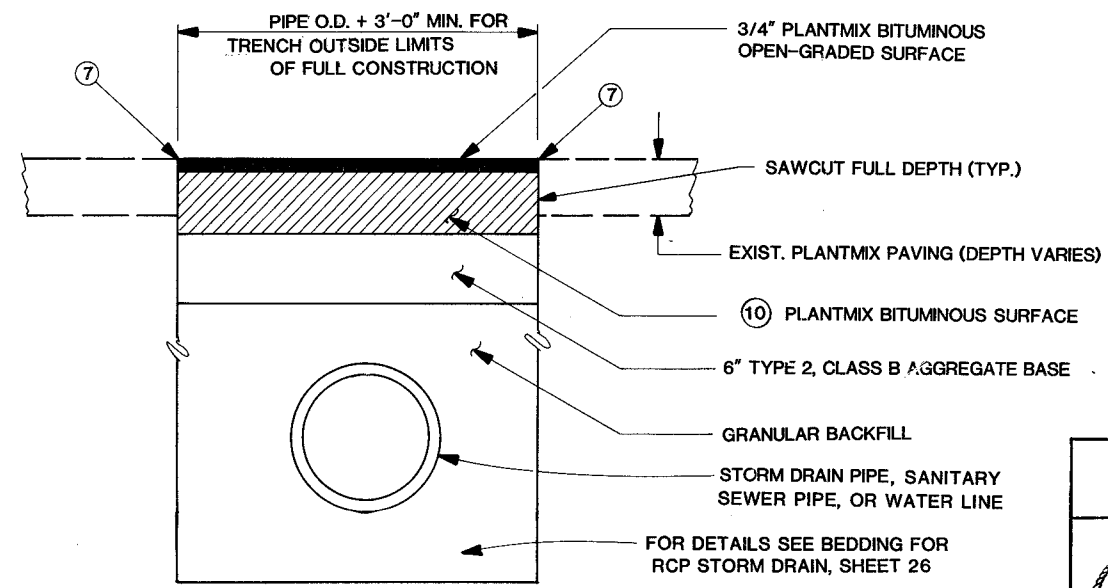
"C" 107+21 P.O.T. TO "C" 120+02 P.O.T. (LT.)
 "C" 107+21 P.O.T. TO "C" 116+65 P.O.T. (RT.)



SPECIAL DETAIL "A" ③



SPECIAL DETAIL "B" ③



SPECIAL DETAIL "C" ③

GENERAL NOTES:

- EXISTING SURFACE AFTER COLD MILLING TO MATCH LIP OF GUTTER.
- SEE SHEET 14 FOR LIMITS OF COLD MILLING AND OPEN-GRADED SURFACE.
- "C" 107+21.18 TO "C" 115+50 REMOVE EXISTING MEDIAN CURBS, MEDIAN ISLAND PAVING AND PLANTMIX BITUMINOUS SURFACE BETWEEN SAWCUTS. PATCH REMAINING VOID FULL-DEPTH WITH PLANTMIX BITUMINOUS SURFACE.
- REMOVE EXISTING CURB, GUTTER, SIDEWALK, PLANTMIX BITUMINOUS SURFACE, AND IMPROVEMENTS BEHIND SIDEWALK. SEE SHEETS 22 TO 24 FOR DETAILS OF NEW IMPROVEMENTS OUTSIDE OF R/W.
- WHERE FRONT FACE CURB TO FRONT FACE CURB IS 4.0' OR LESS, USE 6" CLASS A CONCRETE.
- FOR LOCATION OF NEW MEDIAN ISLAND, CURB, GUTTER AND SIDEWALK, SEE SHEET 12 AND STRUCTURE LIST. CONSTRUCT GLUE-DOWN CURB ON COLD MILLED SURFACE PRIOR TO PLACING OPEN-GRADED SURFACE.
- FINISHED GRADE OF PLANTMIX BITUMINOUS OPEN-GRADED SURFACE TO MATCH EXISTING SURFACE.
- FINISHED GRADE OF PLANTMIX BITUMINOUS SURFACE TO MATCH EXISTING SURFACE.
- SEE PLAN SHEETS 4 THROUGH 13 FOR APPLICATION OF SPECIAL DETAILS "A" AND "B". SEE STORM DRAIN PLAN SHEETS SD-1 AND SD-3, PLAN SHEETS 22 AND 23, AND WATER PLAN SHEETS W-1, W-3, W-4, AND W-8 FOR APPLICATION OF SPECIAL DETAIL "C".
- 6-1/2" DEPTH (LAMB BOULEVARD NORTH OF EAST CHARLESTON BOULEVARD.) 15" DEPTH (EAST CHARLESTON BOULEVARD.)

66907

| | | |
|--|--|--|
| | RENO/SPARKS, NEVADA LAS VEGAS, NEVADA PHOENIX, ARIZONA | STATE OF NEVADA DEPARTMENT OF TRANSPORTATION 107V3989 SECTION OF IMPROVEMENT |
| | JOB NO. 990-02-2 DESIGNED G.S. DRAWN C.H.W. CHECKED JGA DATE 3-30-90 | |