

UTILITY CONSTRUCTION NOTES

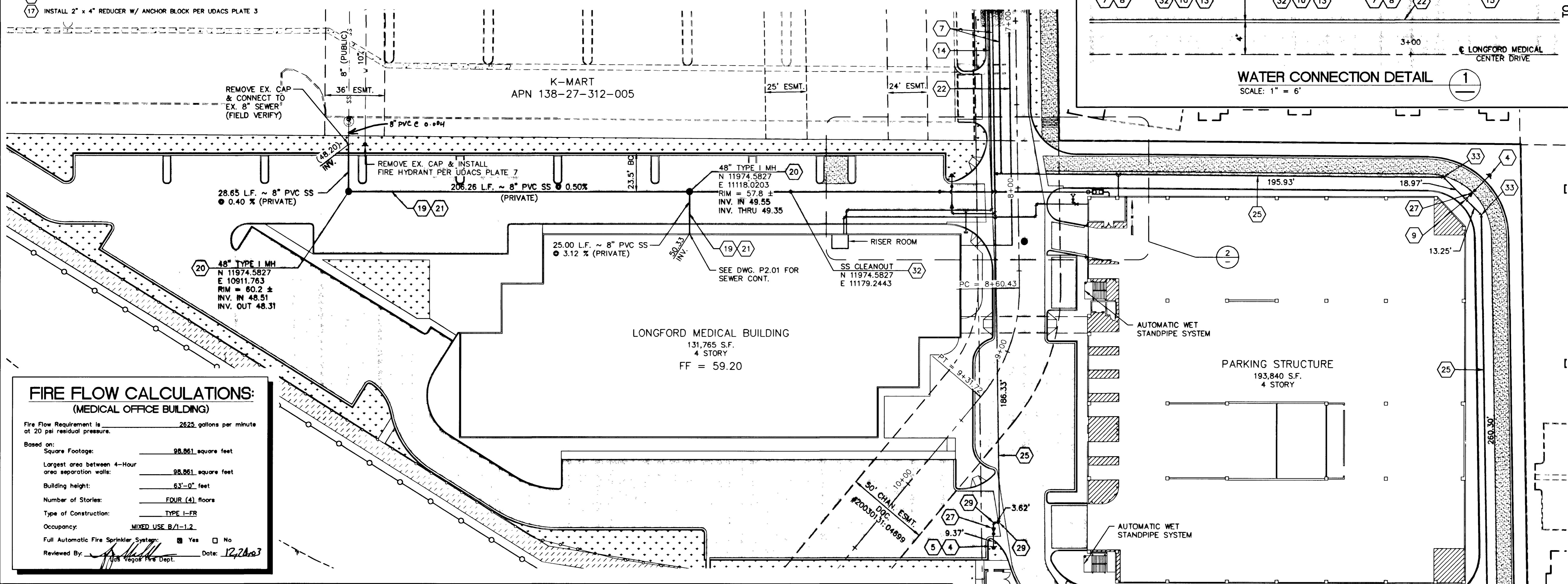
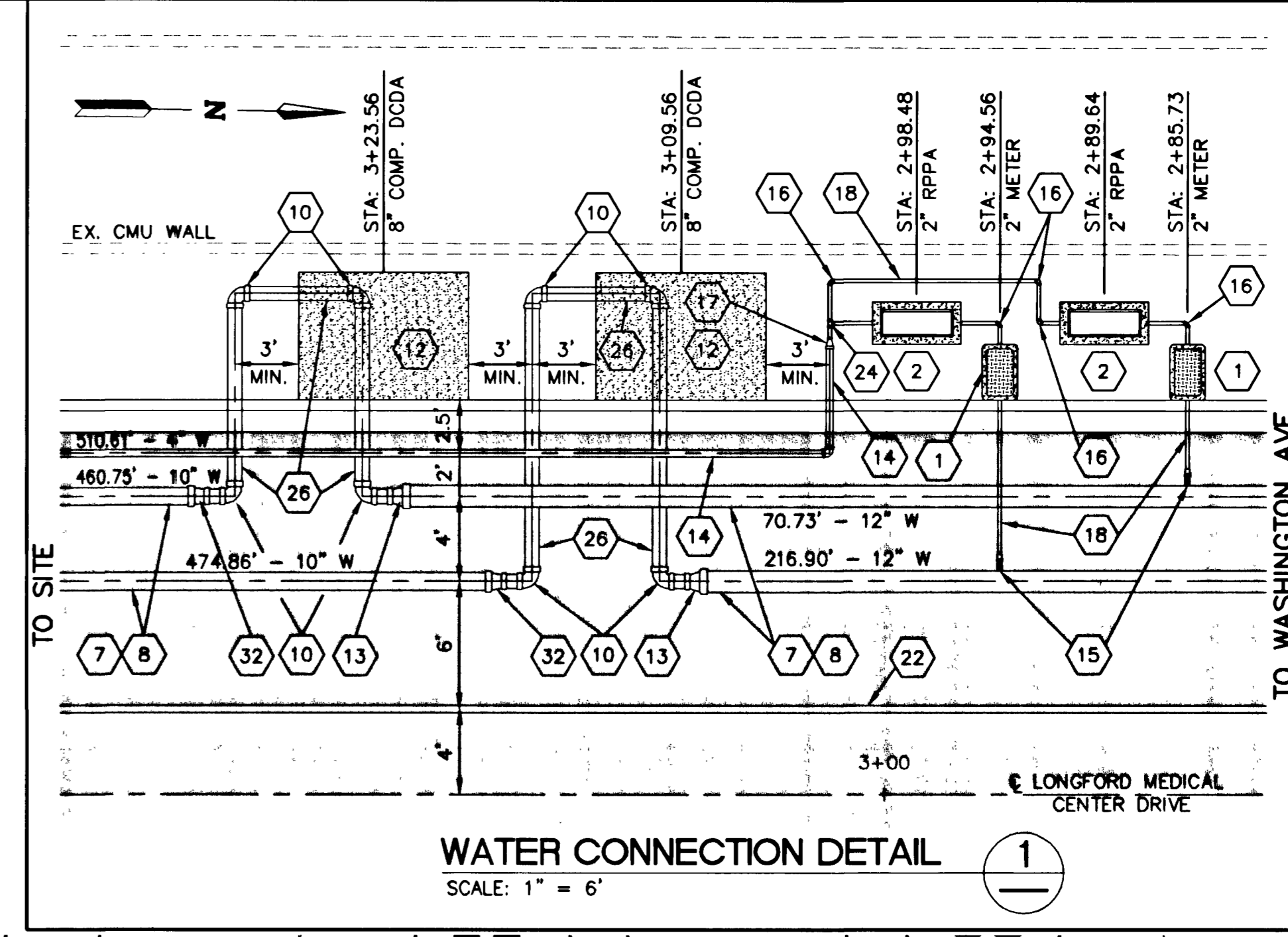
- 1 INSTALL 2" METER FOR POTABLE WATER SUPPLY PER UDACS PLATE 10
- 2 INSTALL 2" RPPA PER UDACS PLATE 11A
- 3 INSTALL 12" 45° ELBOW W/ THRUST BLOCK PER UDACS PLATE 5
- 4 INSTALL FIRE HYDRANT AND APPURTENANCES PER UDACS PLATE 7
- 5 INSTALL BOLLARDS FOR PROTECTION AROUND FIRE HYDRANT PER UDACS PLATE 23
- 6 INSTALL 12"x10" REDUCER W/ ANCHOR BLOCK PER UDACS PLATE 3
- 7 INSTALL 12" PVC WATER LINE (C-900, CLASS 150)
- 8 WATER LINE TRENCH AND BACKFILL PER UDACS PLATE 6B
- 9 INSTALL 10" TEE W/ THRUST BLOCK PER UDACS PLATE 5
- 10 INSTALL 8" 90° ELBOW W/ THRUST BLOCK PER UDACS PLATE 5
- 11 INSTALL 10" GATE VALVE W/ ANCHOR BLOCK PER UDACS PLATE 3
- 12 INSTALL 8" D.C.D.A. PER UDACS PLATE 20B (WITH SETTER)
- 13 INSTALL 12" x 8" REDUCER W/ ANCHOR BLOCK PER UDACS PLATE 3
- 14 INSTALL 4" PVC WATER LINE (C-900, CLASS 150)
- 15 INSTALL 12" x 2" SERVICE SADDLE PER UDACS PLATE 10
- 16 INSTALL 2" COPPER 90° ELBOW
- 17 INSTALL 2" x 4" REDUCER W/ ANCHOR BLOCK PER UDACS PLATE 3

- 18 INSTALL 2" COPPER SERVICE LINE
- 19 INSTALL 8" PVC SEWER LINE (SDR-35)
- 20 INSTALL 48" MANHOLE PER STD DWG SD-1
- 21 SEWER LINE TRENCH AND BACKFILL PER STD DWG SD-16A
- 22 4" PE GAS LINE
- 23 CAP
- 24 INSTALL 2" COPPER TEE
- 25 INSTALL 10" PVC WATER LINE (C-900, CLASS 150 OR CLASS 200*)
- 26 INSTALL 8" PVC WATER LINE (C-900, CLASS 150)
- 27 INSTALL 10" x 6" REDUCER W/ ANCHOR BLOCK PER UDACS PLATE 3
- 28 INSTALL 12" 22.5° ELBOW W/ THRUST BLOCK PER UDACS PLATE 5
- 29 INSTALL 10" 90° ELBOW W/ THRUST BLOCK PER UDACS PLATE 5
- 30 INSTALL 4" 90° ELBOW W/ THRUST BLOCK PER UDACS PLATE 5
- 31 INSTALL 4" TEE W/ THRUST BLOCK PER UDACS PLATE 5
- 32 INSTALL 10"x8" REDUCER W/ ANCHOR BLOCK PER UDACS PLATE 3
- 33 INSTALL 10" 45° ELBOW W/ THRUST BLOCK PER UDACS PLATE 7

**FIRE FLOW CALCULATIONS:
(PARKING STRUCTURE)**

Fire Flow Requirement is 2875 gallons per minute at 20 psi residual pressure.

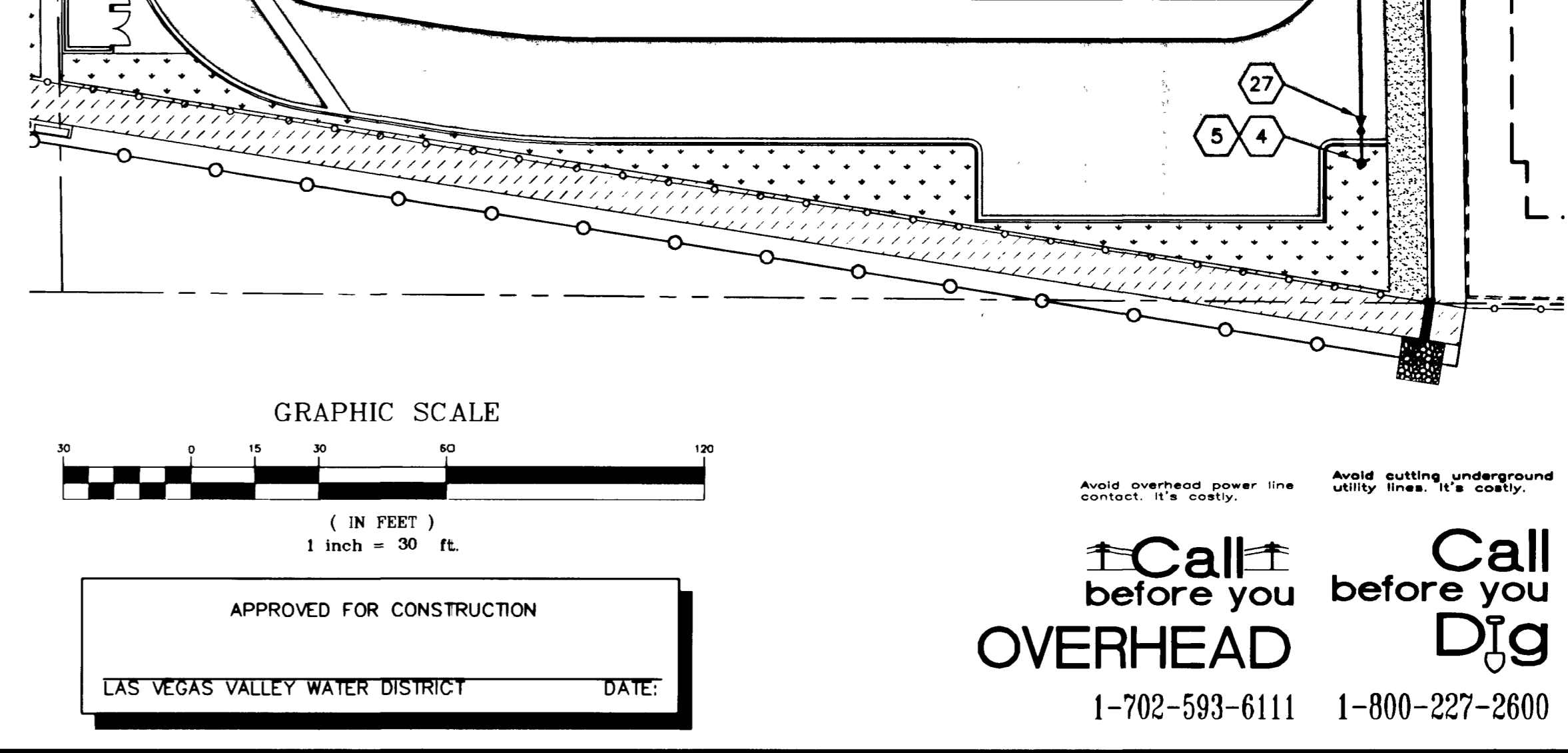
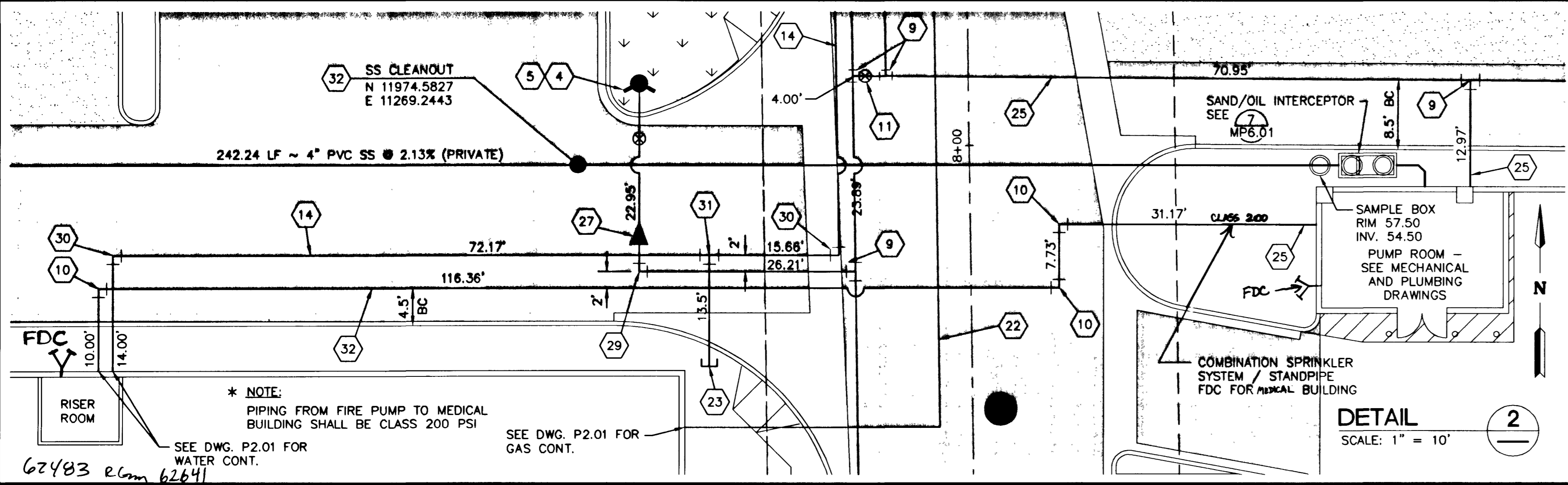
Based on:
 Square Footage: 155,241 square feet
 (3 Largest Successive Floors)
 Largest area between 4-Hour area separation walls: 202,668 square feet
 Building height: 37'-8" feet
 Number of Stories: FOUR (4) floors
 Type of Construction: TYPE II - ONE HR.
 Occupancy: S-4 OPEN PARKING STRUCTURE
 Full Automatic Fire Sprinkler System: Yes No
 Reviewed By: [Signature] Date: 12/28/03
 Las Vegas Fire Dept.



**FIRE FLOW CALCULATIONS:
(MEDICAL OFFICE BUILDING)**

Fire Flow Requirement is 2625 gallons per minute at 20 psi residual pressure.

Based on:
 Square Footage: 98,861 square feet
 Largest area between 4-Hour area separation walls: 98,861 square feet
 Building height: 63'-0" feet
 Number of Stories: FOUR (4) floors
 Type of Construction: TYPE I-FR
 Occupancy: MIXED USE B/1-1.2
 Full Automatic Fire Sprinkler System: Yes No
 Reviewed By: [Signature] Date: 12/28/03
 Las Vegas Fire Dept.



LONGFORD GROUP
3077 E. WARM SPRINGS ROAD
LAS VEGAS, NEVADA
(702) 454-5300

WRIGHT CIVIL ENGINEERS, INC
7425 PEAK DRIVE
LAS VEGAS, NEVADA 89128
TEL (702) 933-7000 FAX (702) 933-7001

WRIGHT ENGINEERS

UTILITY PLAN

**LONGFORD MEDICAL OFFICE BUILDING
PHASE II SITE IMPROVEMENTS**

DRAWN BY: DD 07/15/03
DESIGNED BY: JO 02/26/03
CHECKED BY: JO
PROJECT NO: 2311800
SCALE: 1" = 30'

PROFESSIONAL ENGINEER STATE OF NEVADA
JON P. OSBORNE
Exp. 12/31/03
No. 14888
12-24-03

SHEET **C2.03**
8 OF 17 SHEETS
DRAWING NO. 107V5853-2