

SIDEWALK RAMP TRANSITION TABLE

| RAMP NO. | GRADE (%) "B" TO "A" | "A" (FT) MIN. | "B" (FT) MIN. |
|----------|----------------------|---------------|---------------|
| 1 | -1.89% | 8.0 | 8.0 |
| 2 | -0.91% | 8.0 | 8.0 |

CURVE TABLE

| CURVE | RADIUS | DELTA | LENGTH | TANGENT |
|-------|--------|-----------|--------|---------|
| C1 | 13.00 | 91°04'24" | 20.66 | 13.25 |
| C2 | 20.00 | 69°01'32" | 24.09 | 13.75 |
| C3 | 5.00 | 43°36'23" | 3.81 | 2.00 |
| C4 | 50.00 | 14°02'10" | 12.25 | 6.16 |
| C5 | 50.00 | 14°02'10" | 12.25 | 6.16 |
| C6 | 50.00 | 13°10'42" | 11.50 | 5.78 |
| C7 | 50.00 | 13°10'42" | 11.50 | 5.78 |

- NOTES:
- SEE DWG C2.02 FOR UTILITY CONSTRUCTION NOTES
 - SEE DWG C3.02 FOR GRADING CONSTRUCTION NOTES

NOTE:

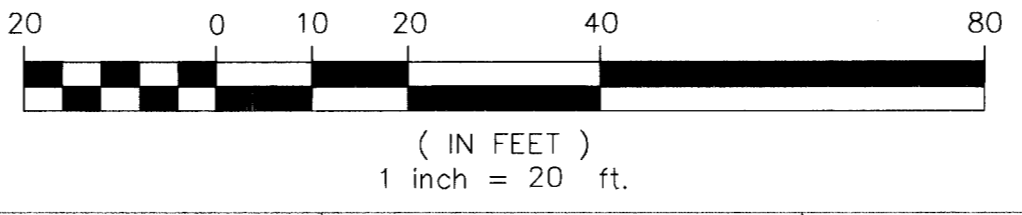
INSTALL PIPELINE MARKER BALLS IN TRENCH ABOVE EACH HORIZONTAL ELBOW FITTING, PER MANUFACTURER INSTRUCTIONS.

FF = 52.96

FF = 52.98

U.S.D. STD. DWG. NO 235
CASE III

CONCRETE CULVERT TOP



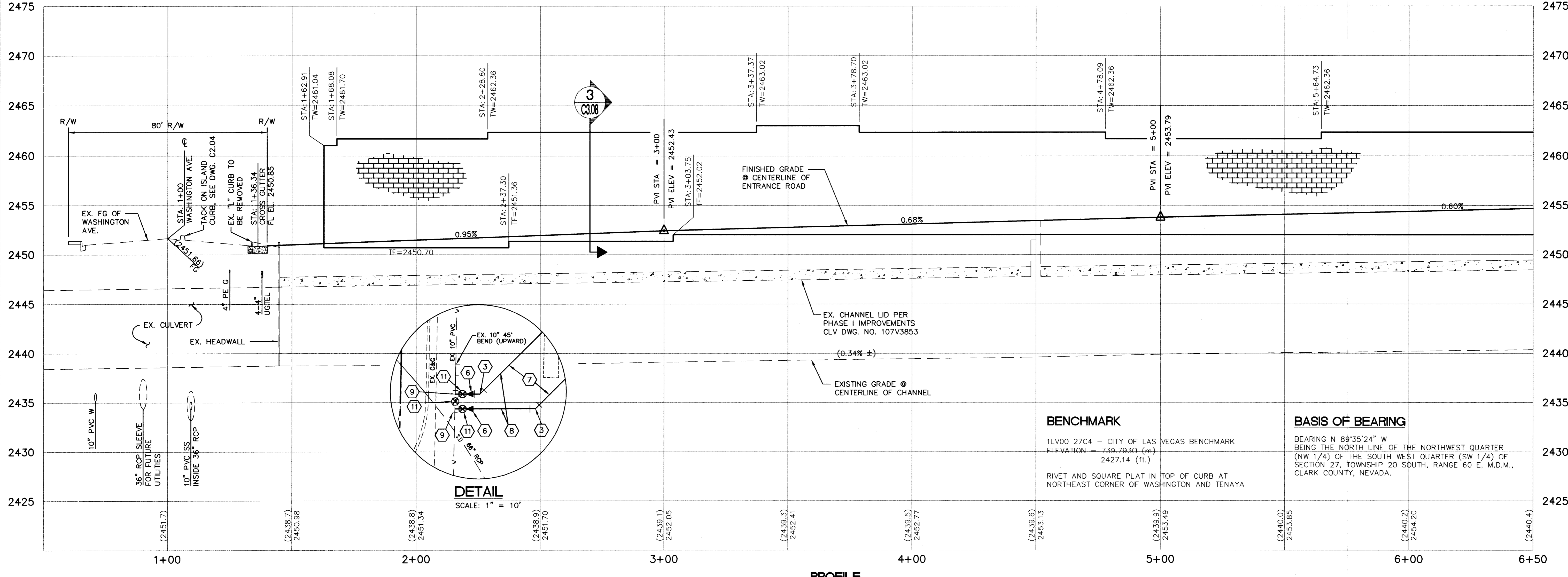
APPROVED FOR CONSTRUCTION

Robert Morgan
LAS VEGAS VALLEY WATER DISTRICT

3/1/04 DATE

Call before you OVERHEAD 1-702-593-6111

Call before you Dig 1-800-227-2600



66784

PROFILE
SCALE: HORIZ. 1" = 20'
VERT. 1" = 5'

LONGFORD GROUP
3077 E. WARM SPRINGS ROAD
LAS VEGAS, NEVADA 89120
(702) 454-5500

WRIGHT CIVIL ENGINEERS, INC.
7425 PEAK DRIVE
LAS VEGAS, NEVADA 89128
TEL (702) 933-7000 FAX (702) 933-7001

REVISION
BY DATE
3-16-04 JPB
Revised Waterline Location
APPROVED
REVISION

LAND SURVEYING
STRUCTURAL
CIVIL

ENTRANCE ROAD & DRAINAGE CHANNEL PLAN & PROFILE STA. 1+00 TO STA. 6+50

LONGFORD MEDICAL OFFICE BUILDING PHASE II SITE IMPROVEMENTS

SHEET 07/15/03
DESIGNED BY: JAD 02/26/03
CHECKED BY: []
PROJECT NO: 2311800
SCALE: AS SHOWN

PROFESSIONAL ENGINEER
STATE OF NEVADA
JON P. OSBORNE
Exp. 12/31/03
No. 14888
12-24-03

SHEET C2.01
6 OF 17 SHEETS
DRAWING NO. 107V3853-2