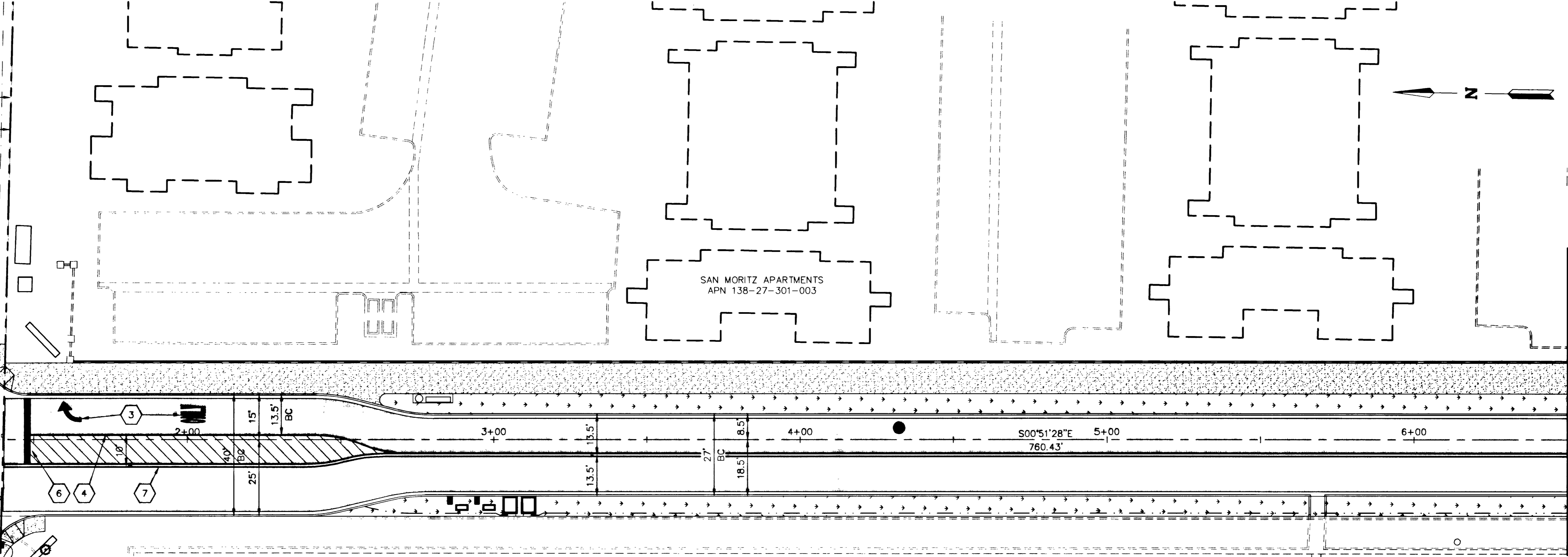
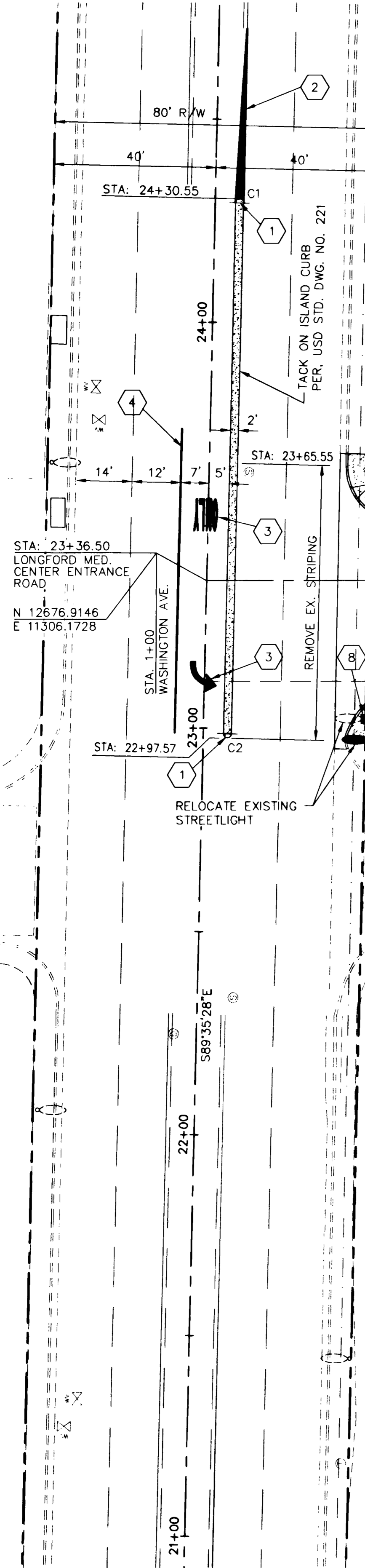
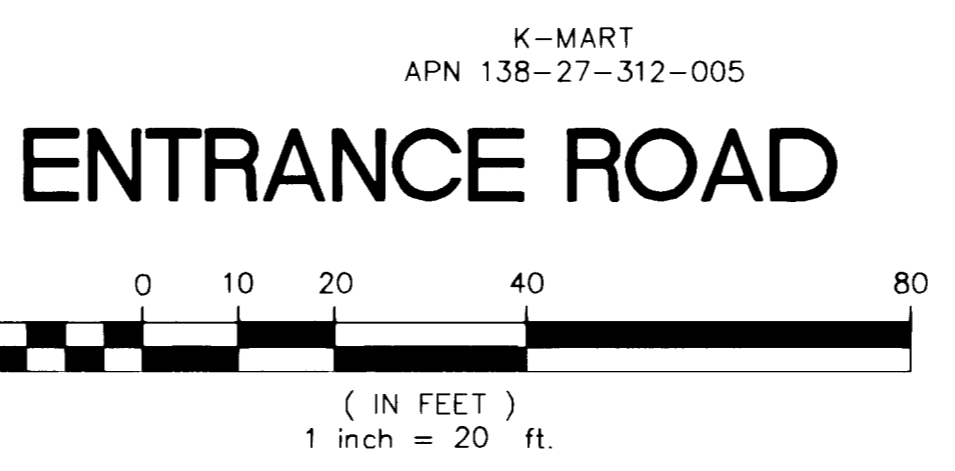


WASHINGTON AVE.  
(PUBLIC)



FOC CURVE TABLE				
CURVE	RADIUS	DELTA	LENGTH	TANGENT
C1	1.00	180°00'00"	3.14	INFINITE
C2	1.00	180°00'00"	3.14	INFINITE



**ENTRANCE ROAD**

**CONSTRUCTION NOTES**

- 1 INSTALL MEDIAN NOSE MARKINGS PER USD STD. DWG. NO. 248
- 2 INSTALL PAVEMENT TRANSITION PER USD STD. DWG. NO. 245
- 3 INSTALL WHITE TYPE I FILM PAVEMENT MARKINGS
- 4 INSTALL LEFT TURN LANE PER USD STD. DWG. NO. 246
- 5 12" WHITE PAVEMENT MARKING
- 6 24" WHITE STOP BAR
- 7 INSTALL TYPE I CENTERLINE PER USD STD. DWG. NO. 244
- 8 INSTALL NO. 3 1/2 PULLBOX
- 9 INSTALL 2" CONDUIT W/ 2 #4, 1 #8 THW WIRE

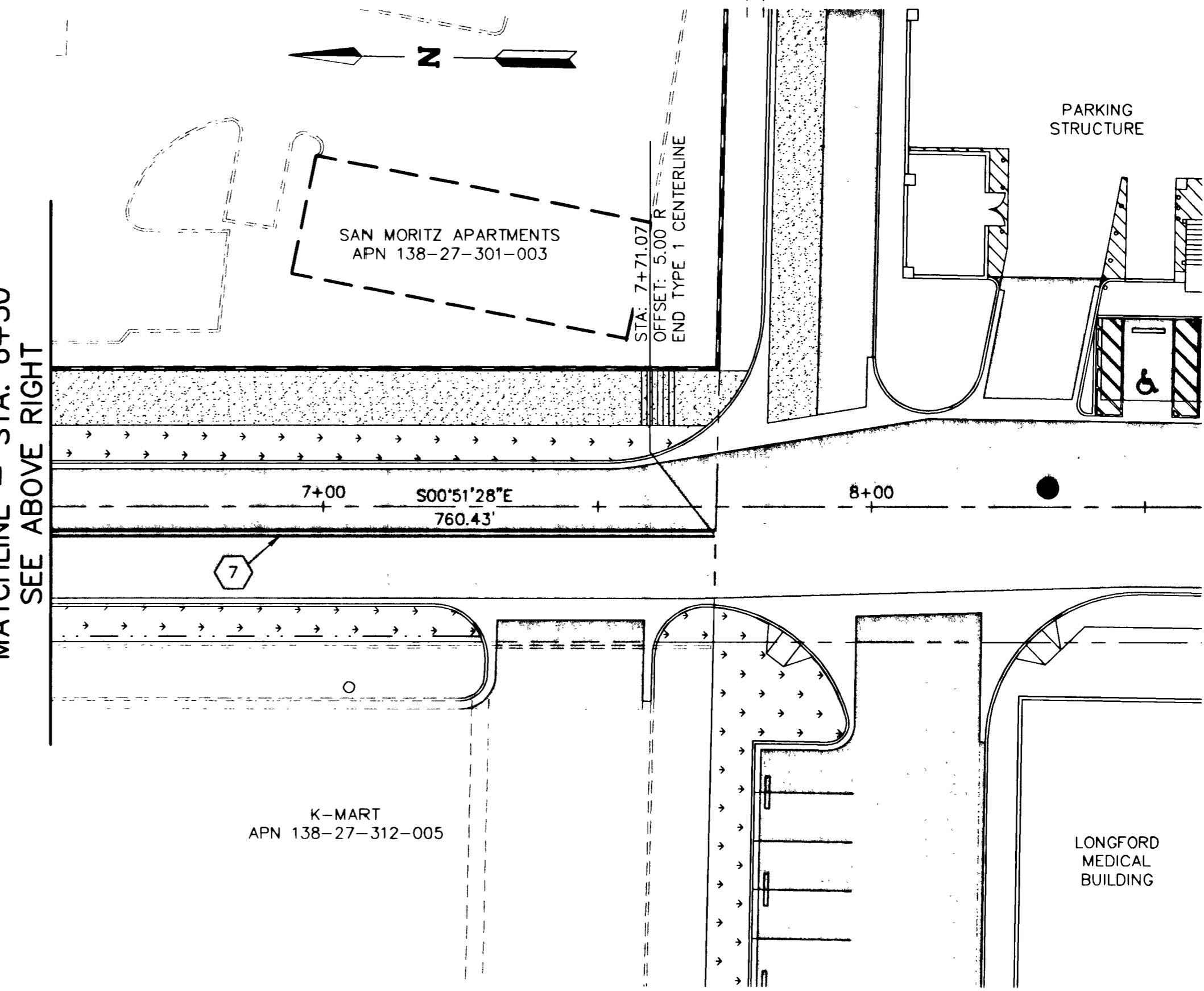
**BENCHMARK**

1LV00 27C4 - CITY OF LAS VEGAS BENCHMARK  
ELEVATION = 739.7930 (m)  
2427.14 (ft.)

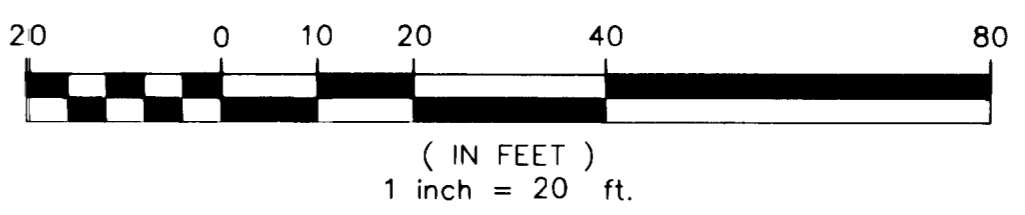
RIVET AND SQUARE PLAT IN TOP OF CURB AT  
NORTHEAST CORNER OF WASHINGTON AND TENAYA

**BASIS OF BEARING**

BEARING N 89°35'24" W  
BEING THE NORTH LINE OF THE NORTHWEST QUARTER  
(NW 1/4) OF THE SOUTH WEST QUARTER (SW 1/4) OF  
SECTION 27, TOWNSHIP 20 SOUTH, RANGE 60 E, M.D.M.,  
CLARK COUNTY, NEVADA.



**ENTRANCE ROAD**



62484

	<p><b>ENTRANCE ROAD STRIPING PLAN</b></p> <p><b>LONGFORD MEDICAL OFFICE BUILDING PHASE II SITE IMPROVEMENTS</b></p>								
<p>DRAWN BY: J07/AS/J03</p> <p>DESIGNED BY: J02/28/J03</p> <p>CHECKED BY:</p> <p>PROJECT NO: 2311B00</p> <p>SCALE: AS SHOWN</p>	<p>SHEET 9 OF 17 SHEETS</p> <p>DRAWING NO. 16763953-2</p>								
<p>LONGFORD GROUP 3077 E. WARM SPRINGS ROAD LAS VEGAS, NEVADA (702) 454-5300</p> <p>WRIGHT CIVIL ENGINEERS, INC. LAS VEGAS, NEVADA TEL (702) 933-7000 FAX (702) 933-7001 LAND SURVEYING</p>									
<table border="1" style="width: 100%; border-collapse: collapse;"> <thead> <tr> <th>REV</th> <th>DATE</th> <th>BY</th> <th>REVISION</th> </tr> </thead> <tbody> <tr> <td> </td> <td> </td> <td> </td> <td> </td> </tr> </tbody> </table>		REV	DATE	BY	REVISION				
REV	DATE	BY	REVISION						