

IN: P-98556/55/H2
OPA-111
ON-1
OG-101
OPT-101
OEJ-101
OEP-101
OA-3, L=60'
STAKE POLE 10'
WEST OF EXISTING
CUST OWNED POLE
LINE FROM EDGE OF
POLES
U-11403

IN: P-98557/55/H2
OPA-111
ON-2
OG-101
OPT-101
OEJ-101
OEP-101
OA-3, L=60'
STAKE POLE 10'
WEST OF EXISTING
CUST OWNED POLE
LINE FROM EDGE OF
POLES

IN:
(2)6" 90 DEGREE
RGS/FG BENDS,
BY CUST

WELL 83
400 HP

IN:
(2)4" PLASTIC CONDUITS
WITH 1/0 TRI IN 1 OF
2-4" C

IN:
UC-101, BY NPC

IN:
RS-82B

IN:
P-98559/55/H2
OPA-111
ON-2
OG-101
OPT-101
OEJ-101
OEP-101
OA-3, L=60'
STAKE POLE 10'
WEST OF EXISTING
CUST OWNED POLE
LINE FROM EDGE OF
POLES
U-11348

IN:
P-98580/55/H2
OPA-111
ON-2
OG-101
OPT-101
OEJ-101
OEP-101
OA-3, L=60'
STAKE POLE 10'
WEST OF EXISTING
CUST OWNED POLE
LINE FROM EDGE OF
POLES

IN:
P-98581/55/H2
OPA-111
ON-2
OG-101
OPT-101
OEJ-101
OEP-101
OA-3, L=60'
STAKE POLE 10'
WEST OF EXISTING
CUST OWNED POLE
LINE FROM EDGE OF
POLES

IN:
(3)6" PLASTIC CONDUITS
WITH (1)1000 MCM TRI IN
2 OF 3-6" C

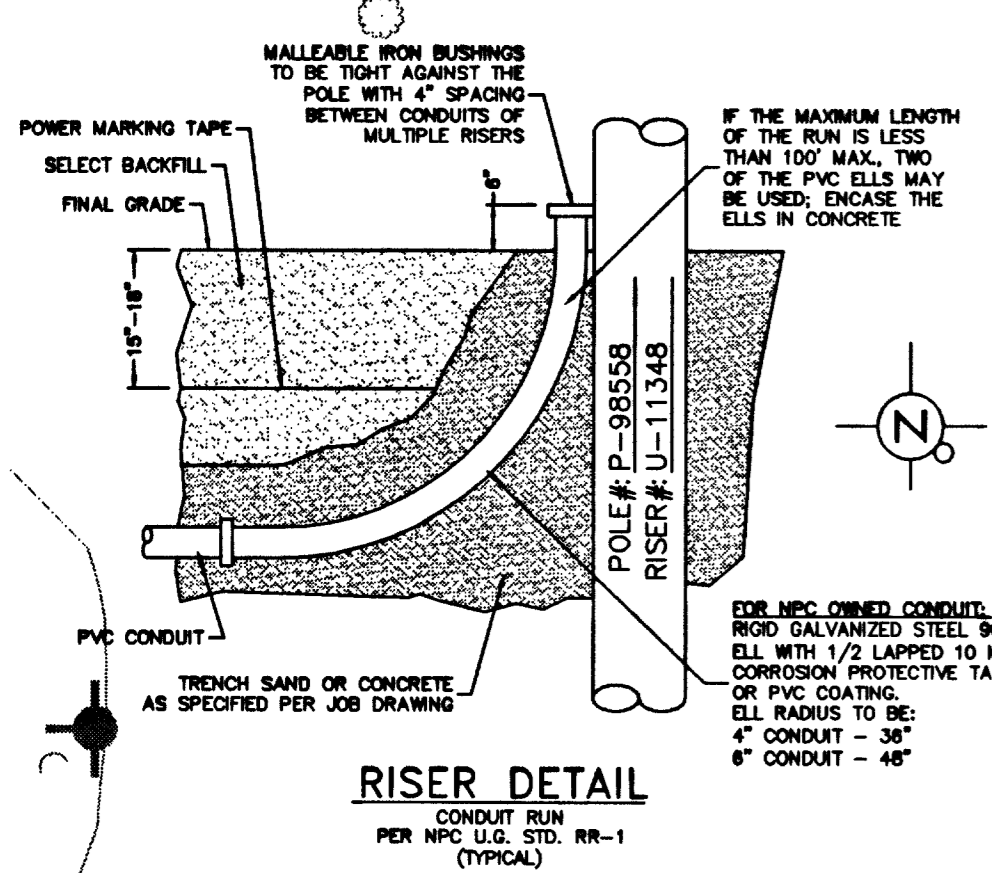
IN:
P-98558/55/H2
OPA-111
ON-1
OG-101
OPT-101
OEJ-101
OEP-101
OA-3, L=60'
STAKE POLE 10'
WEST OF EXISTING
CUST OWNED POLE
LINE FROM EDGE OF
POLES
U-11348

IN:
(2)6" PLASTIC CONDUIT, BY CUST
WITH (1)1000 MCM TRI IN 2 OF
2-6" C, BY NPC

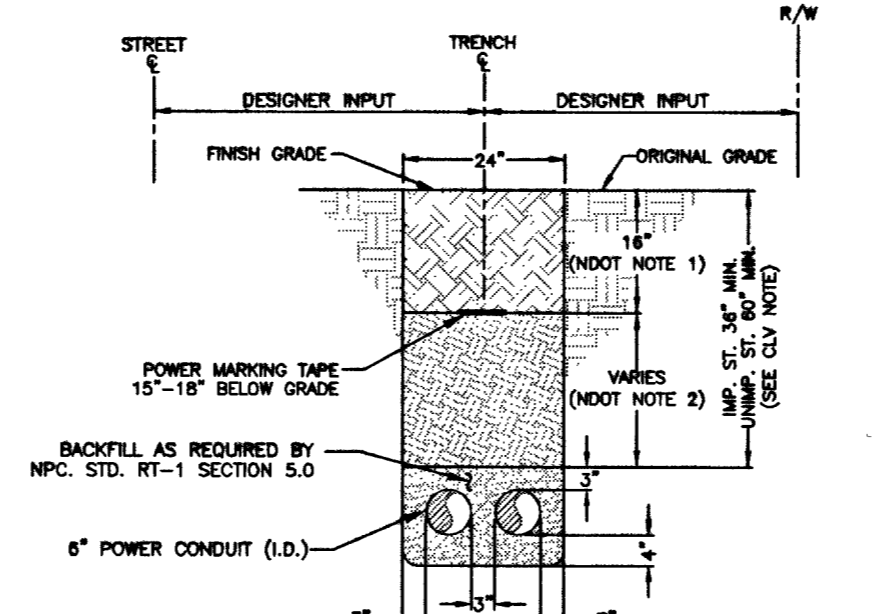
IN:
RS-101 AND
PMH-11

IN:
(2)6" 90 DEGREE
RGS/FG BENDS,
BY CUST

IN:
(2)6" PLASTIC CONDUIT, BY CUST
WITH (1)1000 MCM TRI IN 2 OF
2-6" C, BY NPC



RISER DETAIL
CONDUIT RUN
PER NPC U.G. STD. RR-1
(TYPICAL)

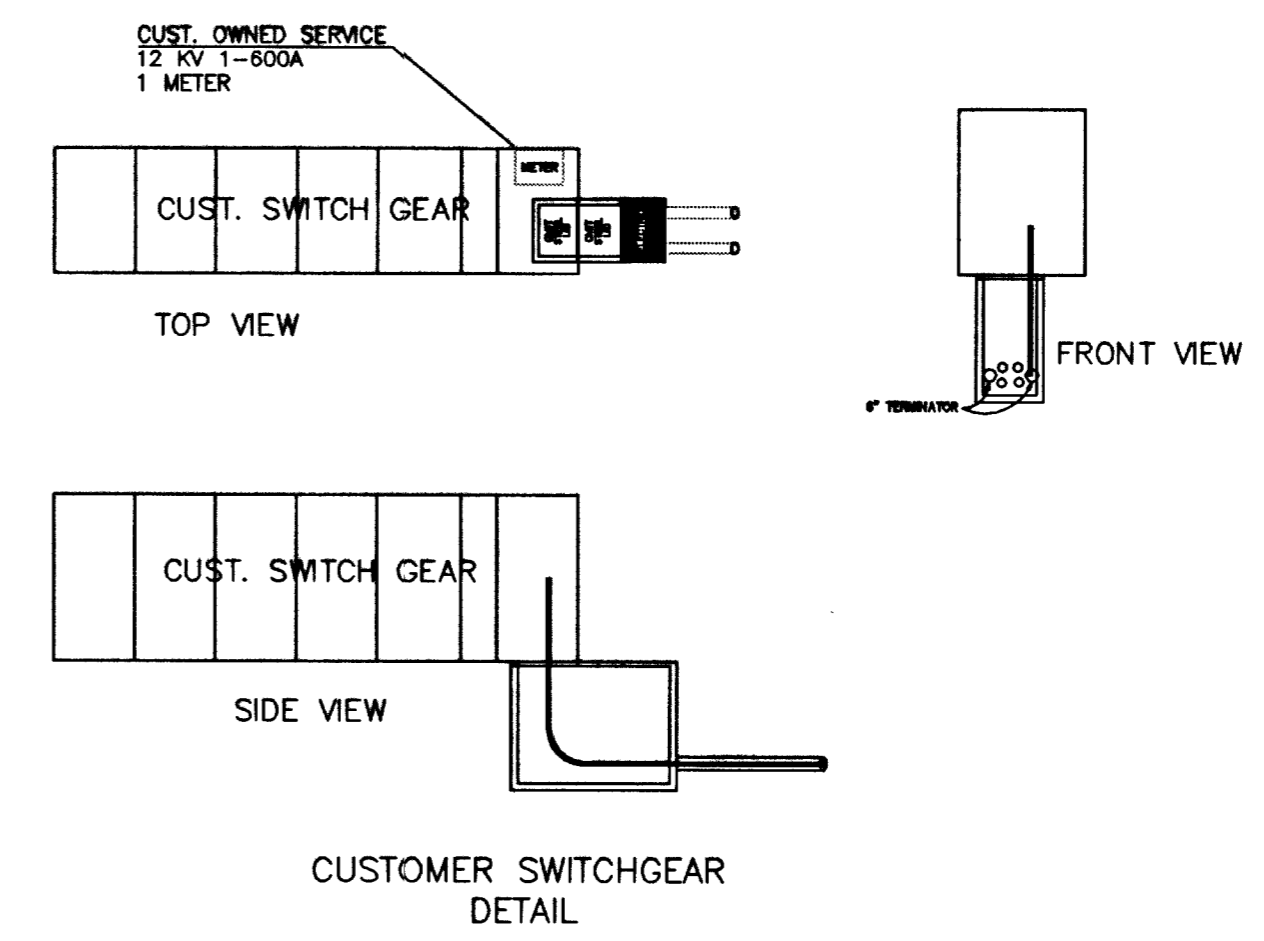


NOTES:
1. BASE AGGREGATE (AS PER NDOT SPECIFICATIONS, SECTION 704), A MINIMUM OF 18 INCHES TO BE LAD IN MAXIMUM 8 INCH LOOSE LIFTS; 90% COMPACTION REQUIRED.
2. BACKFILL WITH SELECT MATERIAL TO BOTTOM OF BASE AGGREGATE (AS PER NDOT SPECIFICATIONS, SECTION 307), 90% COMPACTION REQUIRED.
3. IMPROVED AREA (IMP. ST.) (LOCATION OF TRENCH) AREA WILL BE CONSIDERED IMPROVED IF IT MEETS ONE OR MORE OF THE FOLLOWING CRITERIA(S):
- EXISTING PERMANENT PAVEMENT WITH CURB & GUTTER AND/OR ADJACENT PERMANENT SIDEWALK
- WITHIN AN IMPROVED TRAIL AREA
- LIMITS OF CONSTRUCTION INSTALLED CONCURRENTLY WITH A PRIVATE OR PUBLIC PROJECT
UNIMPROVED AREA (UNIMP. ST.) (LOCATION OF TRENCH) ANY OTHER SCENARIO THAT FAILS TO MEET THE IMPROVED AREA CRITERIA(S) WILL BE CONSIDERED AN UNIMPROVED AREA.
FOR ALL OTHER JURISDICTIONS REFER TO NPC STANDARDS.
BACKFILL REQUIREMENTS NPC STD. RT-1.
TRENCH DEPTH REQUIREMENTS NPC STD. RT-5.

TRENCH DETAIL
2-6" CONDUITS

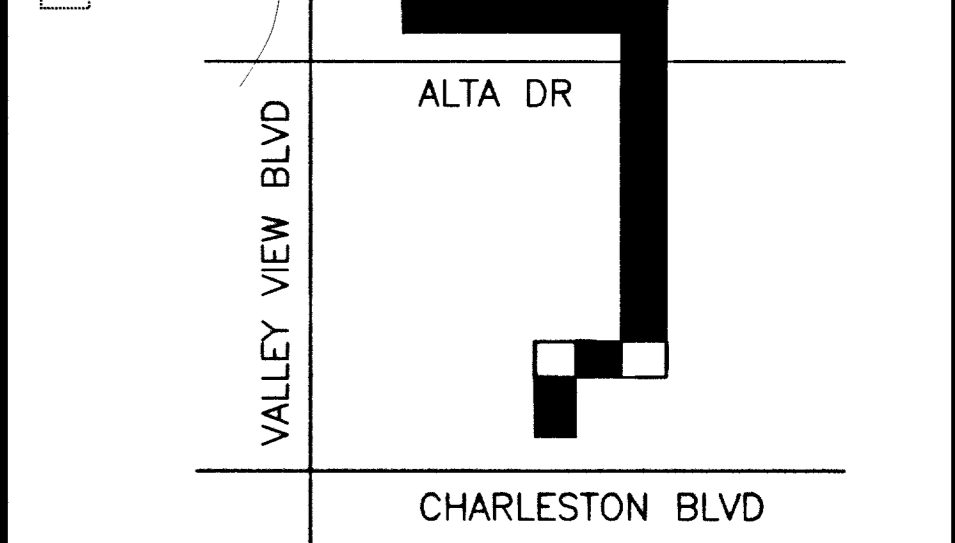
MATCHLINE B

SEE MATCHLINE C
SHEET 3 OF 3



PURPOSE OF PROJECT:
IN: OH PRI CIRCUIT TO CUST OWNED SWITCH

T,R,S: 2061-31
APN: 13931801006



VICINITY MAP
(NOT TO SCALE)

EVERY EFFORT HAS BEEN MADE TO IDENTIFY ALL NPC FACILITIES. THE CUSTOMER SHALL CONFIRM THE EXISTENCE AND LOCATION OF THESE FACILITIES.

Call before you Dig. 1-800-227-2600 UNDERGROUND SERVICE (USA). CALL 1-702-227-2929

Table with 4 columns: NO., DESCRIPTION, DATE, G.A. containing revision history.

Table with 2 columns: TYPE OF EASEMENT and JPA NOTES, detailing survey and easement information.

NPC INFORMATION:
COORDINATOR: BRAD REPLINGER
PHONE: 657-4303
DESIGNER: DARRYL THOMAS
DCA:
INSPECTOR: 378-3695
SCHEDULING: 657-4114, 657-4116, 657-4118
DISTRICT: LAS VEGAS
CUSTOMER INFORMATION:
DEVELOPER:
ENGINEER:
CONTACT: JOE SIGNORELLI 258-3892
APPROVAL DATE: 06/27/2003
GOVERNMENT INFORMATION:
AGENCY: CITY OF LAS VEGAS
APPROVAL DATE:

NEVADA POWER COMPANY

LVVWD SERVICE CONNECTION

PROJ. ID: 172407 SCALE: 1" = 50'
SHEET #: 2 OF 3 DATE: 04/04/2003

CITY OF LAS VEGAS PERMIT REQUIRED*
CONTACT CLV LAND DEVELOPMENT (228-6371)
CLV CONSTRUCTION SERVICES MUST BE NOTIFIED 24 HOURS PRIOR TO COMMENCING CONSTRUCTION (228-6337)
*NPC INSPECTOR MUST BE NOTIFIED BY FAX 48 HOURS PRIOR TO COMMENCING CONSTRUCTION & WILL VERIFY CITY PERMIT FOR WORK DONE IN STREETS OR SIDEWALK.
FAX PERMIT:
LAS VEGAS NORTH: 857-4354
LAS VEGAS SOUTH (HENDERSON): 558-4740
LAS VEGAS SOUTH (SPRING VALLEY): 252-4828