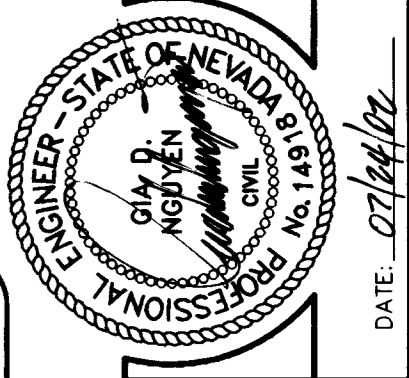
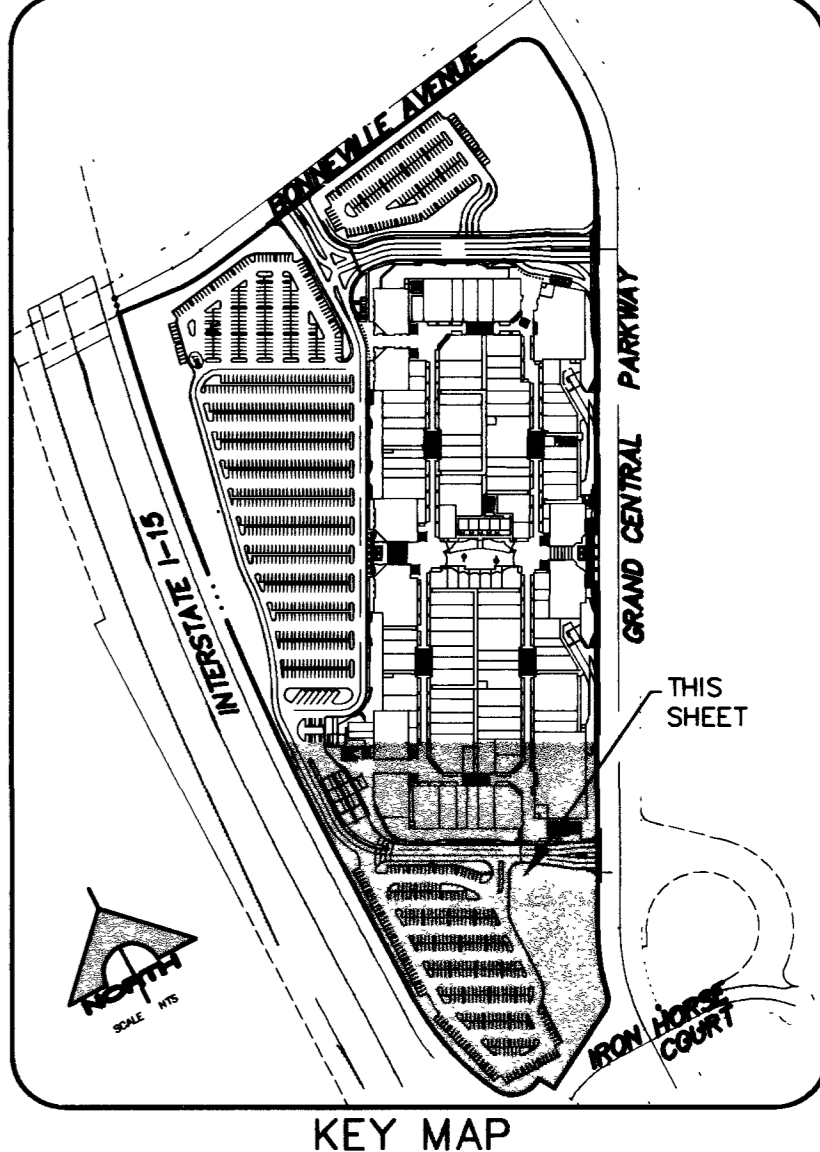
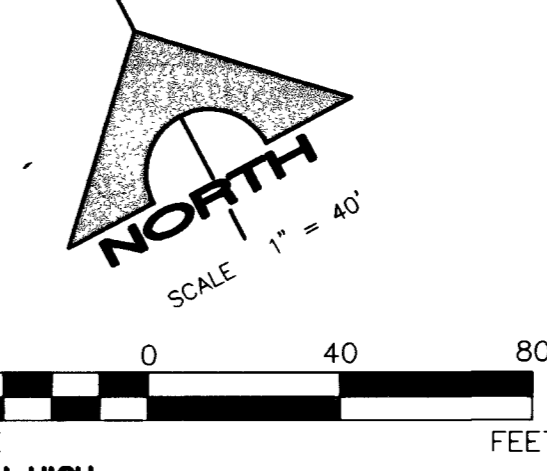
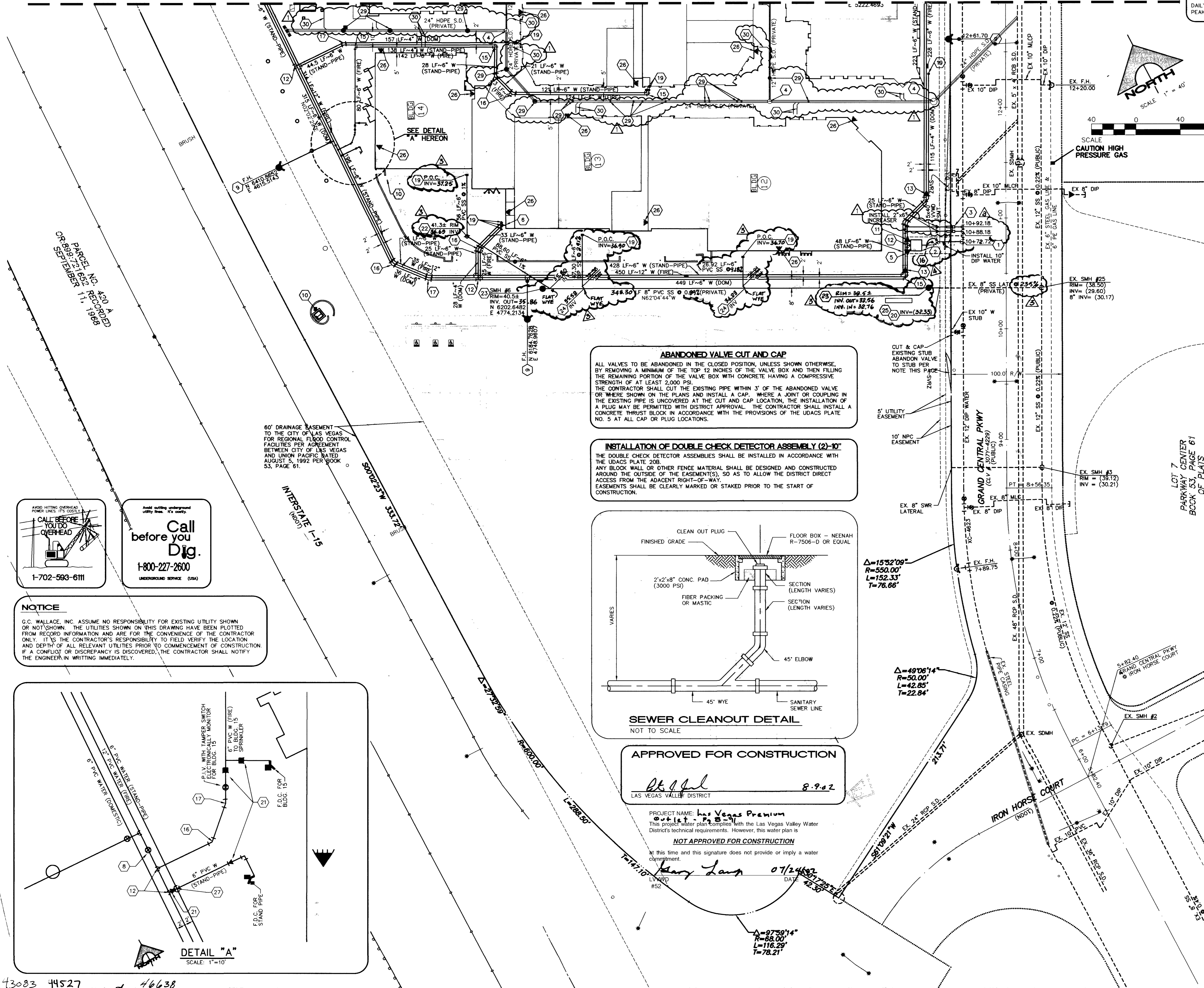


SEWER CONTRIBUTION  
DAILY AVERAGE: 472 FIXTURES X 0.65 ERU/FIXTURE X 250 GPD = 76,700 GPD  
PEAK FLOW: 76,700 GPD X 3.4 (PEAK) = 260,780 GPD



DATE: 07/24/02



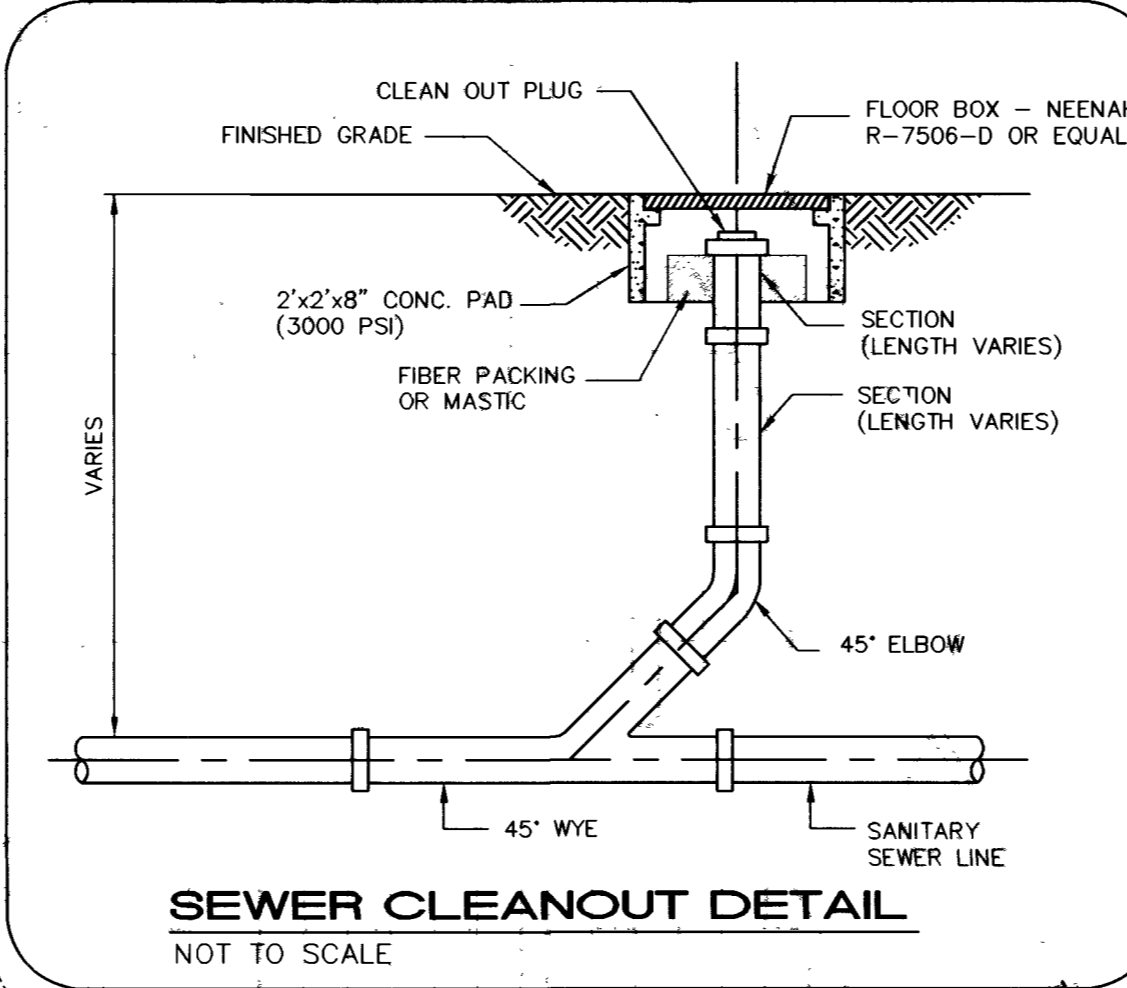
NOTE:  
ALL ON-SITE FIRE PIPE CANNOT BE LESS THAN CLASS 200, AND THE MINIMUM PIPE WORKING PRESSURE LESS THAN 200 PSI.

UTILITY CONSTRUCTION NOTES

- 1. INSTALL 12"x10" MECHANICAL JOINT TAPPING TEE W/10" TAPPING VALVE.
2. INSTALL 10" FERCO MODEL 876V DOUBLE CHECK DETECTOR ASSEMBLY PER UDACS PLATE NO. 20B.
3. INSTALL 2-2" WATER METER W/ 2" RPPA PER UDACS PLATES 1D & 11A.
4. STORM DRAIN MANHOLE.
5. INSTALL 10"x12" REDUCER/INCREASER.
6. FIRE DEPT. CONNECTION - SEE ARCHITECTURAL/FIRE PROTECTION PLANS FOR EXACT LOCATION.
7. INSTALL FLAT SEWER WYE PER SANITATION DISTRICT STANDARDS.
8. INSTALL GATE VALVE. SEE PLAN FOR SIZE.
9. INSTALL FIRE HYDRANT ASSEMBLY PER UDACS PLATE NO. 7.
10. TRANSFORMER PAD - SEE ARCHITECTURAL/ELECTRICAL PLANS FOR EXACT LOCATION.
11. INSTALL 10"x6" REDUCER/INCREASER.
12. INSTALL TEE. SEE PLAN FOR SIZE.
13. INSTALL 6" x 4" REDUCER.
14. INSTALL 12"x6" TAPPING TEE W/6" TAPPING VALVE.
15. INSTALL 90° BEND. SEE PLAN FOR SIZE.
16. INSTALL 45° BEND. SEE PLAN FOR SIZE.
17. INSTALL 22-1/2" BEND. SEE PLAN FOR SIZE.
18. INSTALL 11-1/4" BEND. SEE PLAN FOR SIZE.
19. SEE PLUMBING PLANS FOR CONTINUATION.
20. REMOVE EX. PLUG AND CONNECT TO EXISTING SEWER.
21. INSTALL CHECK VALVE.
22. INSTALL SEWER CLEAN OUT PER SANITATION DISTRICT STANDARDS. INSTALL ALL CLEANOUTS IN PAVED AREAS WITH VALVE BOXES, TRAFFIC BEARING LIDS AND CONCRETE COLLARS.
23. INSTALL 48" DIA. TYPE I SEWER MANHOLE PER SANITATION DISTRICT STANDARDS.
24. INSTALL SEWER WYE PER SANITATION DISTRICT STANDARD.
25. CONTRACTOR TO FIELD VERIFY DEPTH AND LOCATION OF EXISTING UTILITIES PRIOR TO CONSTRUCTION.
26. STAND PIPE USING GLASS III HOLE VALVES - SEE ARCHITECTURAL/FIRE PROTECTION PLAN FOR EXACT LOCATION AND DETAIL.
27. INSTALL 6" CROSS.
28. INSTALL 12" x 6" REDUCER.
29. STORM DRAIN GRATE INLET.
30. ROOF DRAIN LATERAL - SEE PLUMBING PLANS.
31. GREASE TRAP - SEE PLUMBING PLANS FOR DETAILS.

ABANDONED VALVE CUT AND CAP
ALL VALVES TO BE ABANDONED IN THE CLOSED POSITION, UNLESS SHOWN OTHERWISE, BY REMOVING A MINIMUM OF THE TOP 12 INCHES OF THE VALVE BOX AND THEN FILLING THE REMAINING PORTION OF THE VALVE BOX WITH CONCRETE HAVING A COMPRESSIVE STRENGTH OF AT LEAST 2,000 PSI.

INSTALLATION OF DOUBLE CHECK DETECTOR ASSEMBLY (2)-10"
THE DOUBLE CHECK DETECTOR ASSEMBLIES SHALL BE INSTALLED IN ACCORDANCE WITH THE UDACS PLATE 20B.



APPROVED FOR CONSTRUCTION
Signature: [Handwritten Signature]
Date: 8.9.02
LAS VEGAS VALLEY DISTRICT

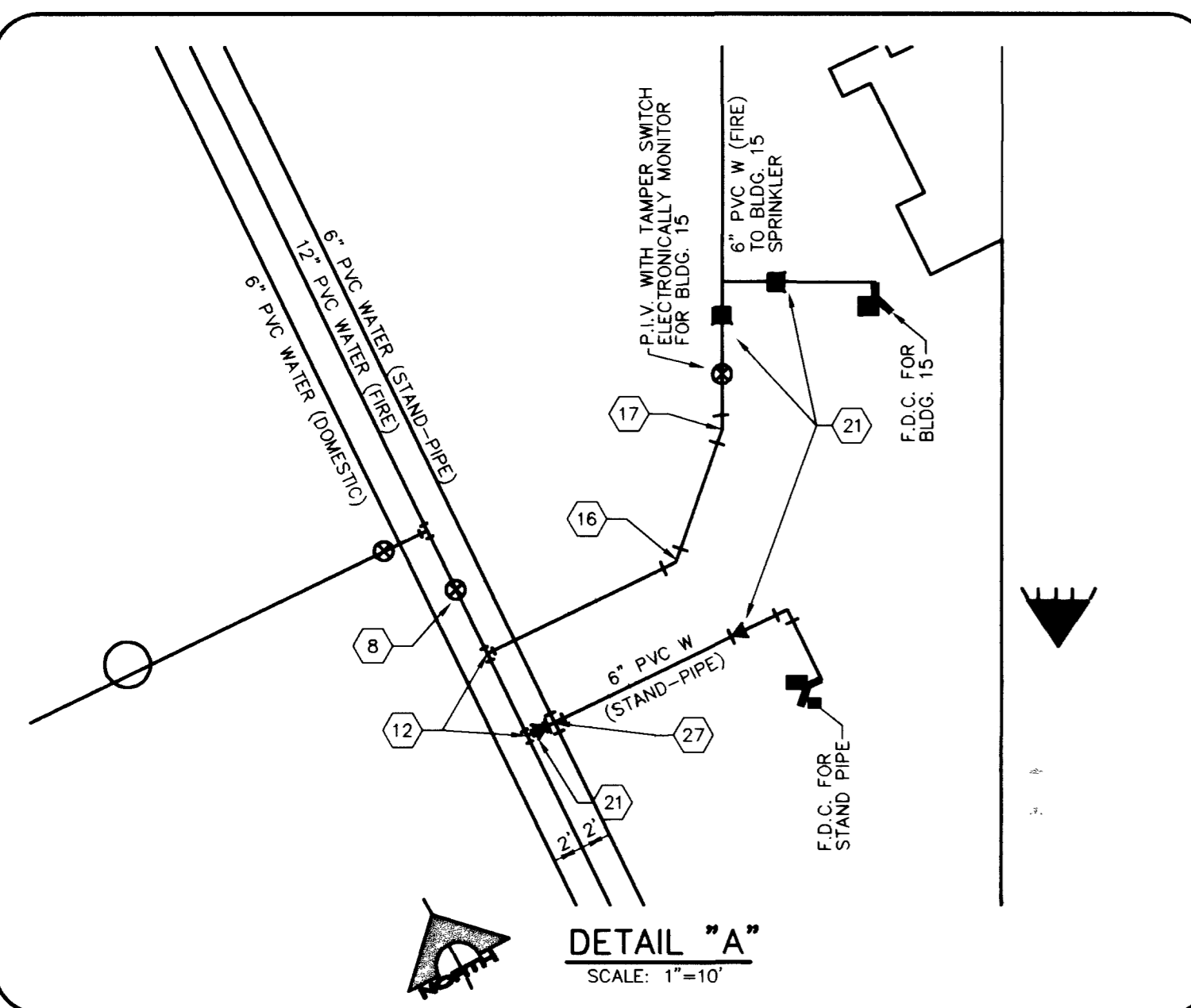
PROJECT NAME: Las Vegas Premium
This project water plan complies with the Las Vegas Valley Water District's technical requirements. However, this water plan is NOT APPROVED FOR CONSTRUCTION.

FIRE FLOW CALCULATIONS table with columns for Building, Square Footage, Largest Area Between Walls, Building Height, Number of Stories, Type of Construction, Occupancy, Full Automatic Fire Sprinkler System.

APPROVED FOR CONSTRUCTION
Signature: [Handwritten Signature]
Date: 7-24-02
CITY OF LAS VEGAS FIRE DEPT.

Call before you Dig. 1-800-227-2600. UNDERGROUND SERVICE (USA). Includes logo for 'CALL BEFORE YOU DIG' and 'AVOID HITTING OVERHEAD POWER LINES'.

NOTICE
G.C. WALLACE, INC. ASSUME NO RESPONSIBILITY FOR EXISTING UTILITY SHOWN OR NOT SHOWN. THE UTILITIES SHOWN ON THIS DRAWING HAVE BEEN PLOTTED FROM RECORD INFORMATION AND ARE FOR THE CONVENIENCE OF THE CONTRACTOR ONLY.



43083 44527 46638

Vertical sidebar containing project information: LAS VEGAS PREMIUM OUTLET, CHELSEA PROPERTY GROUP, UTILITY PLAN I, SHEET C-8, 167-V3573, 8 OF 17 SHEETS.