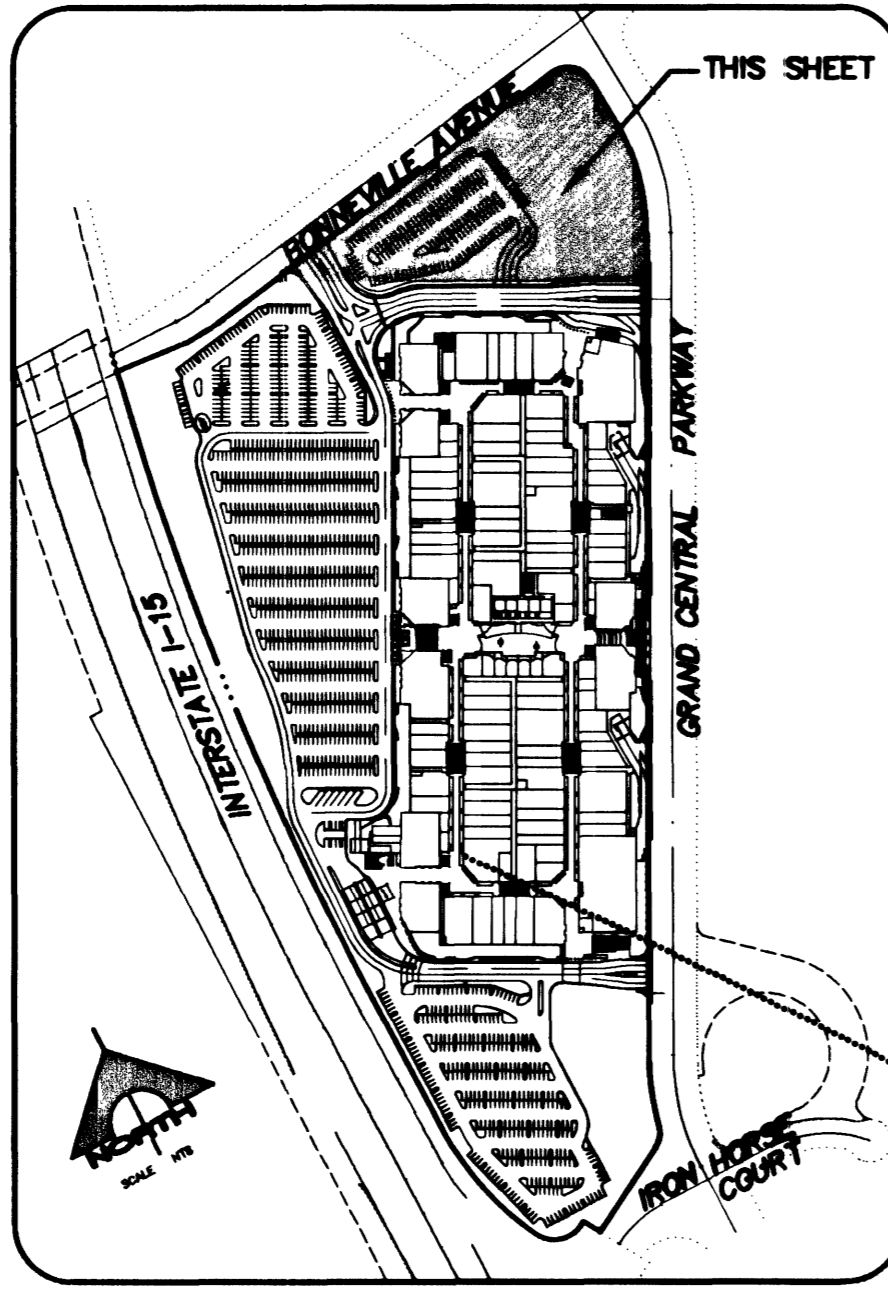
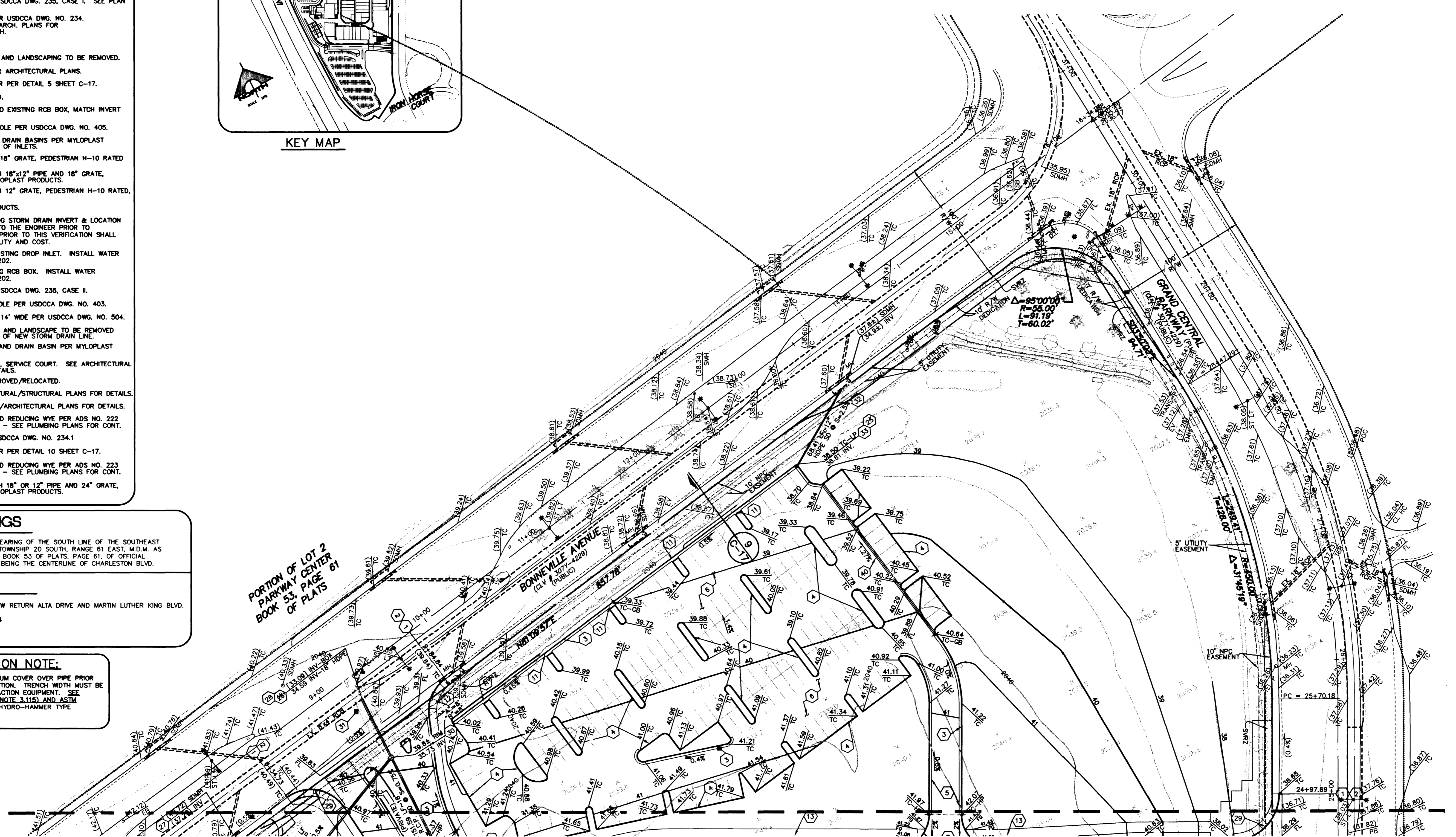
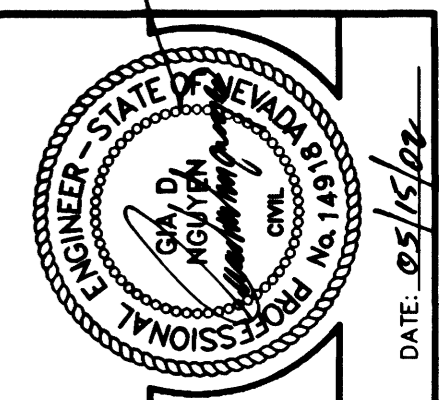
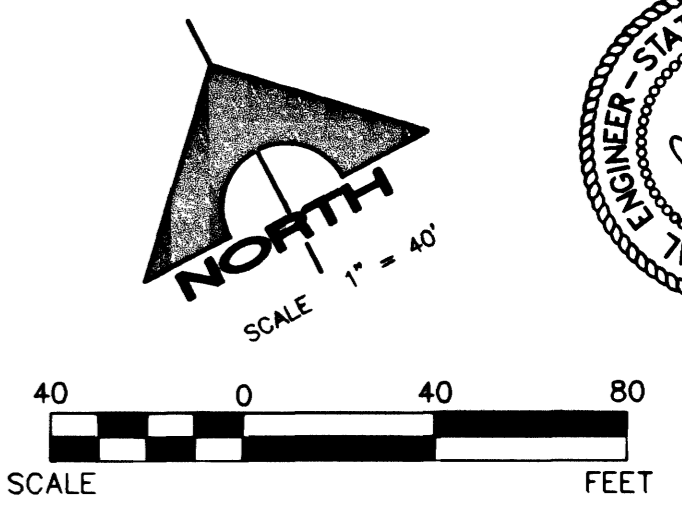


GRADING NOTES

- 1 SAWCUT EXISTING CURB & MATCH. CONTRACTOR SHALL VERIFY EXISTING CURB ELEVATION AND REPORT ANY DISCREPANCIES TO THE ENGINEER PRIOR TO COMMENCEMENT OF CONSTRUCTION.
- 2 CONSTRUCT COMMERCIAL DRIVEWAY & 8" WIDE VALLEY GUTTER PER USDOCA DWG. NO. 225 AND 228.
- 3 CONSTRUCT "L" TYPE CURB PER USDOCA DWG. NO. 218.
- 4 CONSTRUCT TYPE "A" CURB PER DETAIL 2 SHEET C-17.
- 5 CONSTRUCT 3" AC PAVING OVER 8" TYPE II AGGREGATE BASE OVER COMPACTED SUBGRADE PER DETAIL 1 SHEET C-17. SEE SOILS REPORT FOR MORE INFORMATION.
- 6 CONSTRUCT 2" AC PAVING OVER 8" TYPE II AGGREGATE BASE OVER COMPACTED SUBGRADE PER DETAIL 1 SHEET C-17. SEE SOILS REPORT FOR MORE INFORMATION.
- 7 0" CURB FLUSH WITH PAVEMENT.
- 8 INSTALL HANDICAP SIGNAGE, STRIPPING, AND SYMBOL PER ARCHITECTURAL PLANS.
- 9 CONSTRUCT 3" WIDE VALLEY GUTTER PER DETAIL 3 SHEET C-17.
- 10 0" TO 6" CURB TRANSITION MEETING A.D.A. STANDARDS.
- 11 CONSTRUCT 2" WIDE CURB OPENING PER DETAIL 4 SHEET C-17.
- 12 CONSTRUCT SIDEWALK RAMP PER USDOCA DWG. 235, CASE I. SEE PLAN FOR "A" AND "B" DIMENSIONS.
- 13 CONSTRUCT 4" THICK SIDEWALK PER USDOCA DWG. NO. 234. SEE PLAN FOR WIDTH. SEE ALSO ARCH. PLANS FOR EXACT LOCATION, COLOR AND FINISH.
- 14 EXISTING SIGN TO BE REMOVED.
- 15 EXISTING CURB, GUTTER, SIDEWALK AND LANDSCAPING TO BE REMOVED.
- 16 CONSTRUCT TRASH ENCLOSURE PER ARCHITECTURAL PLANS.
- 17 CONSTRUCT 4" WIDE VALLEY GUTTER PER DETAIL 5 SHEET C-17.
- 18 EXISTING SIDEWALK TO BE REMOVED.
- 19 CONNECT 36" OR 18" HDPE PIPE TO EXISTING ROB BOX, MATCH INVERT PER ADS STD - 202.
- 20 CONSTRUCT 48" DIA. TYPE II MANHOLE PER USDOCA DWG. NO. 405.
- 21 INSTALL TWO INLETS, GRATES, AND DRAIN BASINS PER NYLOPLAST PRODUCTS-SEE PLAN FOR NUMBER OF INLETS.
- 22 INSTALL 18" DIA. DRAIN BASINS & 18" GRATE, PEDESTRIAN H-10 RATED PER NYLOPLAST PRODUCTS.
- 23 INSTALL 18" DIA. DRAIN BASIN WITH 18"x12" PIPE AND 18" GRATE, PEDESTRIAN H-10 RATED, PER NYLOPLAST PRODUCTS.
- 24 INSTALL 12" DIA. DRAIN BASIN WITH 12" GRATE, PEDESTRIAN H-10 RATED, PER NYLOPLAST PRODUCTS.
- 25 INSTALL CAP PER NYLOPLAST PRODUCTS.
- 26 CONTRACTOR SHALL VERIFY EXISTING STORM DRAIN INVERT & LOCATION AND REPORT ANY DISCREPANCIES TO THE ENGINEER PRIOR TO CONSTRUCTION. ANY WORK DONE PRIOR TO THIS VERIFICATION SHALL BE THE CONTRACTOR'S RESPONSIBILITY AND COST.
- 27 INSTALL 18" HDPE TO BACK OF EXISTING DROP INLET. INSTALL WATER TIGHT CONNECTION PER ADS STD-202.
- 28 INSTALL 18" HDPE PIPE TO EXISTING ROB BOX. INSTALL WATER TIGHT CONNECTION PER ADS STD-202.
- 29 CONSTRUCT SIDEWALK RAMP PER USDOCA DWG. 235, CASE II.
- 30 CONSTRUCT 60" DIA. TYPE I MANHOLE PER USDOCA DWG. NO. 403.
- 31 SAWCUT & MACHINE LAID MINIMUM 14" WIDE PER USDOCA DWG. NO. 504.
- 32 EXISTING MEDIAN CURB & GUTTER, AND LANDSCAPE TO BE REMOVED AND REPLACE AFTER INSTALLATION OF NEW STORM DRAIN LINE.
- 33 INSTALL ONE CURB INLET, GRATE, AND DRAIN BASIN PER NYLOPLAST PRODUCTS.
- 34 CONSTRUCT CONCRETE SLAB IN ALL SERVICE COURT. SEE ARCHITECTURAL STRUCTURAL PLANS FOR MORE DETAILS.
- 35 EXISTING UTILITY BOXES TO BE REMOVED/RELOCATED.
- 36 DEEPEDED FOOTING-SEE ARCHITECTURAL/STRUCTURAL PLANS FOR DETAILS.
- 37 ROOF DRAIN-SEE PLUMBING PLANS/ARCHITECTURAL PLANS FOR DETAILS.
- 38 INSTALL 12" X 8" N-12 FABRICATED REDUCING WYE PER ADS NO. 222 WITH 8" PIPE STUB 5' FROM BLDG. - SEE PLUMBING PLANS FOR CONT.
- 39 CONSTRUCT BUS TURN OUT PER USDOCA DWG. NO. 234.1
- 40 CONSTRUCT 2" WIDE VALLEY GUTTER PER DETAIL 10 SHEET C-17.
- 41 INSTALL 18" X 8" N-12 FABRICATED REDUCING WYE PER ADS NO. 223 WITH 8" PIPE STUB 5' FROM BLDG. - SEE PLUMBING PLANS FOR CONT.
- 42 INSTALL 24" DIA. DRAIN BASIN WITH 18" OR 12" PIPE AND 24" GRATE, PEDESTRIAN H-10 RATED, PER NYLOPLAST PRODUCTS.



KEY MAP



BASIS OF BEARINGS

SOUTH 89°52'25" EAST, BEING THE BEARING OF THE SOUTH LINE OF THE SOUTHEAST QUARTER (SE 1/4) OF SECTION 33, TOWNSHIP 20 SOUTH, RANGE 61 EAST, M.D.M. AS SHOWN BY MAP THEREOF ON FILE IN BOOK 53 OF PLATS, PAGE 61, OF OFFICIAL RECORDS. SAID SECTION LINE ALSO BEING THE CENTERLINE OF CHARLESTON BLVD.

BENCHMARK

RIVET AND PLATE IN TOP OF CURB SW RETURN ALTA DRIVE AND MARTIN LUTHER KING BLVD.
CITY OF LAS VEGAS B.M. 2LV01 33C4
NAVD 88 ELEVATION 623.8552 (M)
2046.76 (F)

HDPE CONSTRUCTION NOTE:

CONTRACTOR SHALL PROVIDE 30" MINIMUM COVER OVER PIPE PRIOR TO VEHICLE LOADING DURING CONSTRUCTION. TRENCH WIDTH MUST BE WIDE ENOUGH TO ACCOMMODATE COMPACTOR EQUIPMENT. SEE MANUFACTURER'S GUIDELINES (PRODUCT NOTE 3.115) AND ASTM D2321. CONTRACTOR SHALL NOT USE HYDRO-HAMMER TYPE COMPACTORS OVER PIPE TRENCH AREA.

PORTION OF LOT 2
PARKWAY CENTER
BOOK 53, PAGE 61

SEE SHEET C-14

DRAINAGE CERTIFICATION

I CERTIFY THIS GRADING PLAN IS IN CONFORMANCE WITH THE APPROVED DRAINAGE STUDY ON FILE WITH THE CITY OF LAS VEGAS FOR THIS PROJECT.

G.A. Nguyen
GA D. NGUYEN 14918
P.E. NO. DATE 05/15/02



DESIGN:	DATE:	05/15/02
DRAWN:	REV. DATE:	
CHECK:	REV. DATE:	
ISSUE DATE:	REV. DATE:	
ISSUE EDITOR:	REV. DATE:	
PLOT DATE:	REV. DATE:	
PLOT TIME:	REV. DATE:	
DATE LAGEN APP DATE GCW APP	REV. DATE:	
DESCRIPTION	REV. DATE:	
% COMPLETE	REV. DATE:	
ISSUE DATE	REV. DATE:	
Gauging	REV. DATE:	
G. C. WALLACE, INC. Engineers/Planners/Surveyors 1565 SOUTH RAINBOW BLVD. LAS VEGAS, NEVADA 89146 TELEPHONE: (702) 804-2000 • FAX: (702) 804-2299 G:\789-001\Draw\Improv\789-015.dwg	REV. DATE:	
LAS VEGAS PREMIUM OUTLET CHELSEA PROPERTY GROUP GRADING PLAN IV	REV. DATE:	
SHEET C-15 107-V-3573 15 OF 17 SHTS	REV. DATE:	