

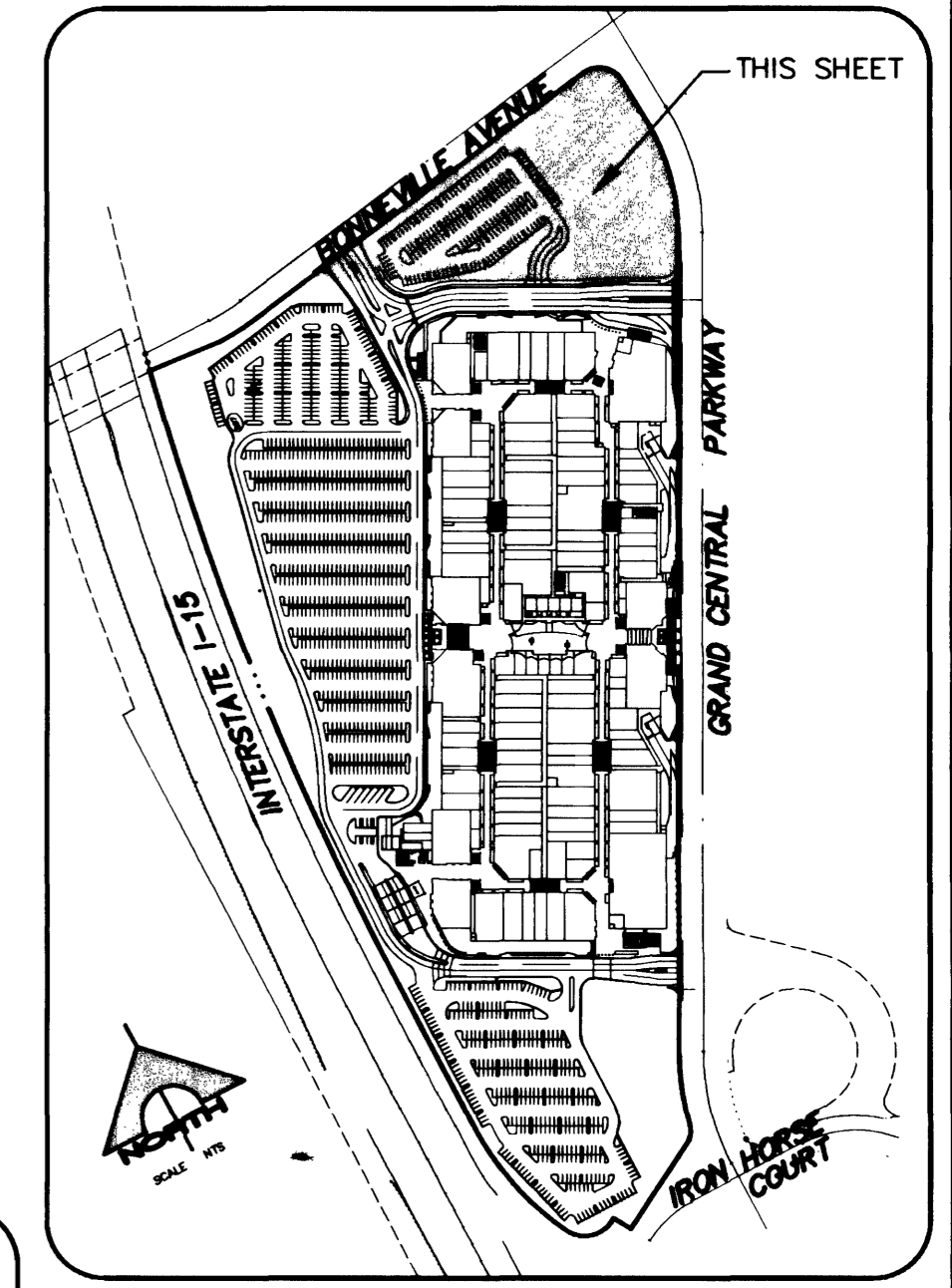
PORTION OF LOT 2
PARWAY CENTER
BOOK OF PLATS
53, PAGE 61

BONNEVILLE AVENUE
(C.V. PUBLIC)
(C.V. 2074-2228)

GRAND CENTRAL
PARWAY
(C.V. 2074-2228)

CAUTION HIGH
PRESSURE GAS

MATCH LINE - SEE SHEET C-10



APPROVED FOR CONSTRUCTION
[Signature]
LAS VEGAS VALLEY WATER DISTRICT
DATE

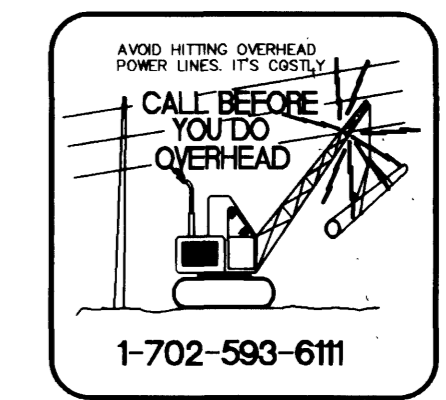
APPROVED FOR CONSTRUCTION
[Signature]
CITY OF LAS VEGAS FIRE DEPART.
DATE

ABANDONED VALVE CUT AND CAP
ALL VALVES TO BE ABANDONED IN THE CLOSED POSITION, UNLESS SHOWN OTHERWISE, BY REMOVING A MINIMUM OF THE TOP 12 INCHES OF THE VALVE BOX AND THEN FILLING THE REMAINING PORTION OF THE VALVE BOX WITH CONCRETE HAVING A COMPRESSIVE STRENGTH OF AT LEAST 2,000 PSI. THE CONTRACTOR SHALL CUT THE EXISTING PIPE WITHIN 3' OF THE ABANDONED VALVE OR WHERE SHOWN ON THE PLANS AND INSTALL A CAP. WHERE A JOINT OR COUPLING IN THE EXISTING PIPE IS UNCOVERED AT THE CUT AND CAP LOCATION, THE INSTALLATION OF A PLUG MAY BE PERMITTED WITH DISTRICT APPROVAL. THE CONTRACTOR SHALL INSTALL A CONCRETE THRUST BLOCK IN ACCORDANCE WITH THE PROVISIONS OF THE UDACS PLATE NO. 5 AT ALL CAP OR PLUG LOCATIONS.

NOTICE
G.C. WALLACE, INC. ASSUME NO RESPONSIBILITY FOR EXISTING UTILITY SHOWN OR NOT SHOWN. THE UTILITIES SHOWN ON THIS DRAWING HAVE BEEN PLOTTED FROM RECORD INFORMATION AND ARE FOR THE CONVENIENCE OF THE CONTRACTOR ONLY. IT IS THE CONTRACTOR'S RESPONSIBILITY TO FIELD VERIFY THE LOCATION AND DEPTH OF ALL RELEVANT UTILITIES PRIOR TO COMMENCEMENT OF CONSTRUCTION. IF A CONFLICT OR DISCREPANCY IS DISCOVERED, THE CONTRACTOR SHALL NOTIFY THE ENGINEER IN WRITING IMMEDIATELY.

- UTILITY CONSTRUCTION NOTES**
- 1 INSTALL 12"x10" MECHANICAL JOINT TAPPING TEE W/10" TAPPING VALVE.
 - 2 INSTALL 10" FEBCO MODEL 876V DOUBLE CHECK DETECTOR ASSEMBLY PER UDACS PLATE NO. 20B.
 - 3 INSTALL 2-2" WATER METER W/ 2" RPPA PER UDACS PLATES 1D & 11A.
 - 4 STORM DRAIN MANHOLE
 - 5 INSTALL 10"x12" REDUCER/INCREASER.
 - 6 FIRE DEPT. CONNECTION - SEE ARCHITECTURAL/FIRE PROTECTION PLANS FOR EXACT LOCATION.
 - 7 INSTALL FLAT SEWER WYE PER SANITATION DISTRICT STANDARDS.
 - 8 INSTALL GATE VALVE. SEE PLAN FOR SIZE.
 - 9 INSTALL FIRE HYDRANT ASSEMBLY PER UDACS PLATE NO. 7.
 - 10 TRANSFORMER PAD - SEE ARCHITECTURAL/ELECTRICAL PLANS FOR EXACT LOCATION.
 - 11 INSTALL 10"x6" REDUCER/INCREASER.
 - 12 INSTALL TEE. SEE PLAN FOR SIZE.
 - 13 INSTALL 6" x 4" REDUCER.
 - 14 INSTALL 12"x6" TAPPING TEE W/6" TAPPING VALVE.
 - 15 INSTALL 90° BEND. SEE PLAN FOR SIZE.
 - 16 INSTALL 45° BEND. SEE PLAN FOR SIZE.
 - 17 INSTALL 22-1/2° BEND. SEE PLAN FOR SIZE.
 - 18 INSTALL 11-1/4° BEND. SEE PLAN FOR SIZE.
 - 19 SEE PLUMBING PLANS FOR CONTINUATION.
 - 20 REMOVE EX. PLUG AND CONNECT TO EXISTING SEWER.
 - 21 INSTALL CHECK VALVE.
 - 22 INSTALL SEWER CLEAN OUT PER SANITATION DISTRICT STANDARDS. INSTALL ALL CLEANOUTS IN PAVED AREAS WITH VALVE BOXES, TRAFFIC BEARING LIDS AND CONCRETE COLLARS.
 - 23 INSTALL 48" DIA. TYPE I SEWER MANHOLE PER SANITATION DISTRICT STANDARDS.
 - 24 INSTALL SEWER WYE PER SANITATION DISTRICT STANDARD.
 - 25 CONTRACTOR TO FIELD VERIFY DEPTH AND LOCATION OF EXISTING UTILITIES PRIOR TO CONSTRUCTION.
 - 26 STAND PIPE - SEE ARCHITECTURAL/FIRE PROTECTION PLAN FOR EXACT LOCATION AND DETAIL.
 - 27 INSTALL 6" CROSS.
 - 28 INSTALL 12" x 6" REDUCER
 - 29 STORM DRAIN GRATE INLET
 - 30 ROOF DRAIN LATERAL - SEE PLUMBING PLANS
 - 31 GREASE TRAP - SEE PLUMBING PLANS FOR DETAILS

NOTE:
ALL ON-SITE FIRE PIPE CANNOT BE LESS THAN CLASS 200, AND THE MINIMUM PIPE WORKING PRESSURE LESS THAN 200 PSI.



Avoid hitting underground utility lines. It's costly.
Call before you Dig.
1-800-227-2600
UNDERGROUND SERVICE (USA)

LAS VEGAS PREMIUM OUTLET
CHELSEA PROPERTY GROUP
UTILITY PLAN IV

SHEET
C-11
107 - V35 73
11 OF 17 SHTS

REPLUST

44530