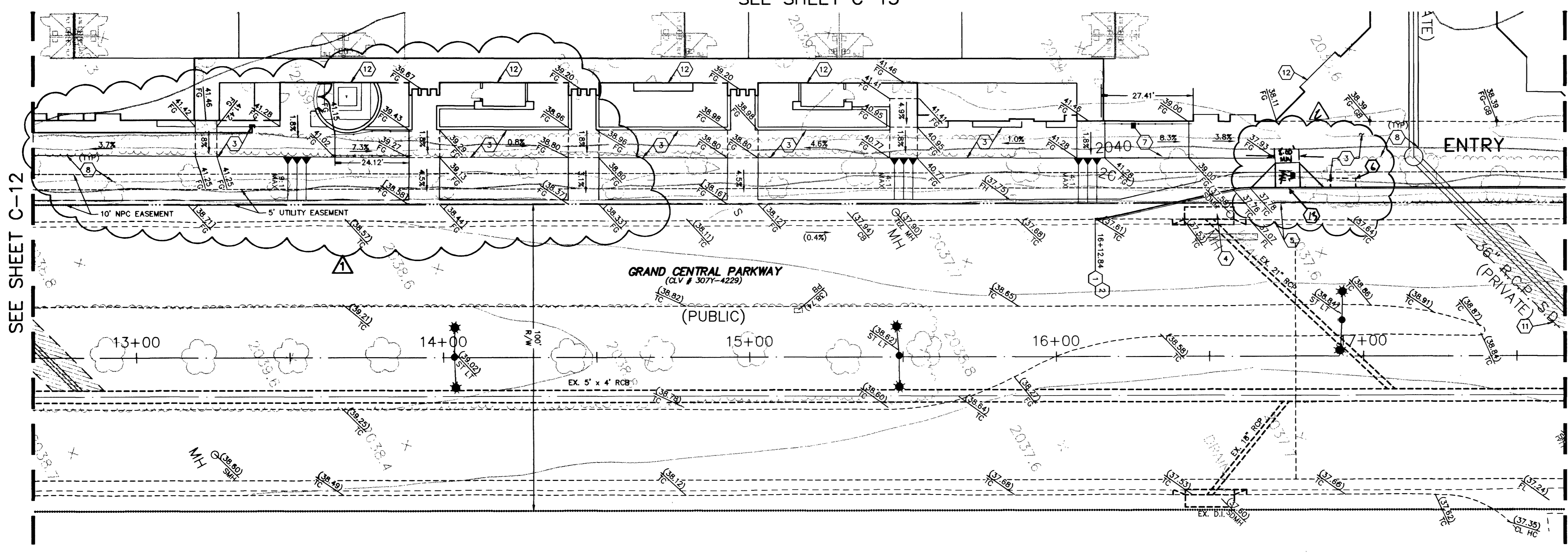
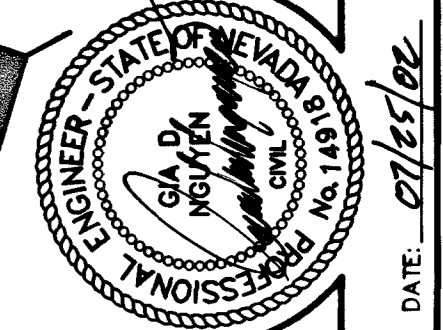
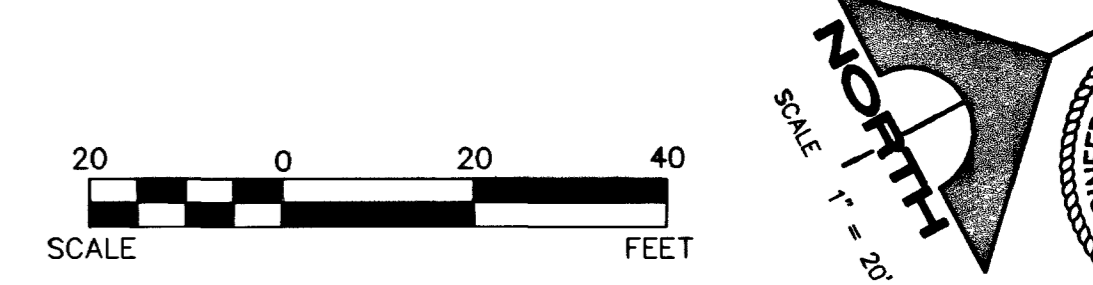


SEE SHEET C-13



- GRADING NOTES**
- SAWCUT EXISTING CURB & MATCH. CONTRACTOR SHALL VERIFY EXISTING CURB ELEVATION AND REPORT ANY DISCREPANCIES TO THE ENGINEER PRIOR TO COMMENCEMENT OF CONSTRUCTION.
 - CONSTRUCT BUS TURN OUT PER USDOCA DWG. NO. 234.1
 - CONSTRUCT 4" THICK SIDEWALK PER USDOCA DWG. NO. 234. SEE PLAN FOR WIDTH. SEE ALSO ARCH. PLANS FOR EXACT LOCATION, COLOR AND FINISH.
 - EXISTING DROP INLET TO BE REMOVED AND REPLACE NEW DROP INLET PER DETAIL A THIS SHEET.
 - EXISTING SIDEWALK, CURB AND GUTTER TO BE REMOVED.
 - DEDICATED BUS LANDING PAD PER USDOCA DWG. NO. 234.2
 - INSTALL A.D.A. RAMP AND HANDRAIL PER ARCHITECTURAL PLANS.
 - EXISTING LANDSCAPE TO BE REMOVED.
 - CONNECT 36" OR 18" HDPE PIPE TO EXISTING RCB BOX, MATCH INVERT PER ADS STD - 202.
 - CONTRACTOR SHALL VERIFY EXISTING STORM DRAIN INVERT & LOCATION AND REPORT ANY DISCREPANCIES TO THE ENGINEER PRIOR TO CONSTRUCTION. ANY WORK DONE PRIOR TO THIS VERIFICATION SHALL BE THE CONTRACTOR'S RESPONSIBILITY AND COST.
 - SAWCUT & MACHINE LAID MINIMUM 12" WIDE PER USDOCA DWG. NO. 504.
 - DEEPENED FOOTING - SEE ARCHITECTURAL/STRUCTURAL PLANS FOR DETAILS.
 - CONSTRUCT SIDEWALK RAMP PER USDOCA DWG. NO. 235, CLG 8.

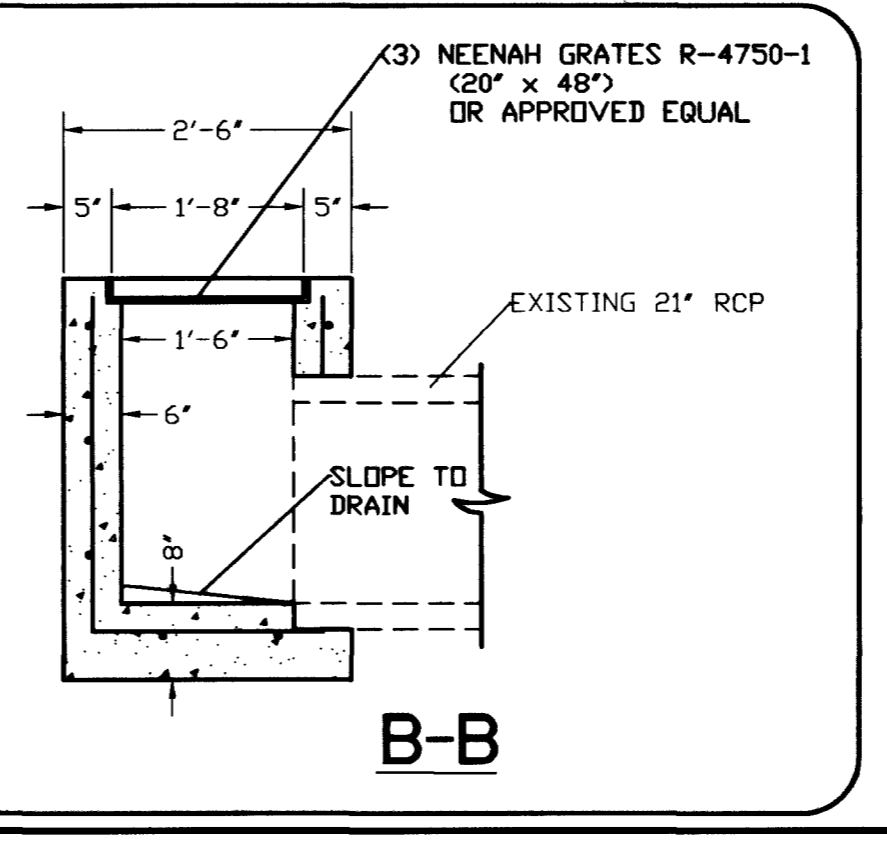
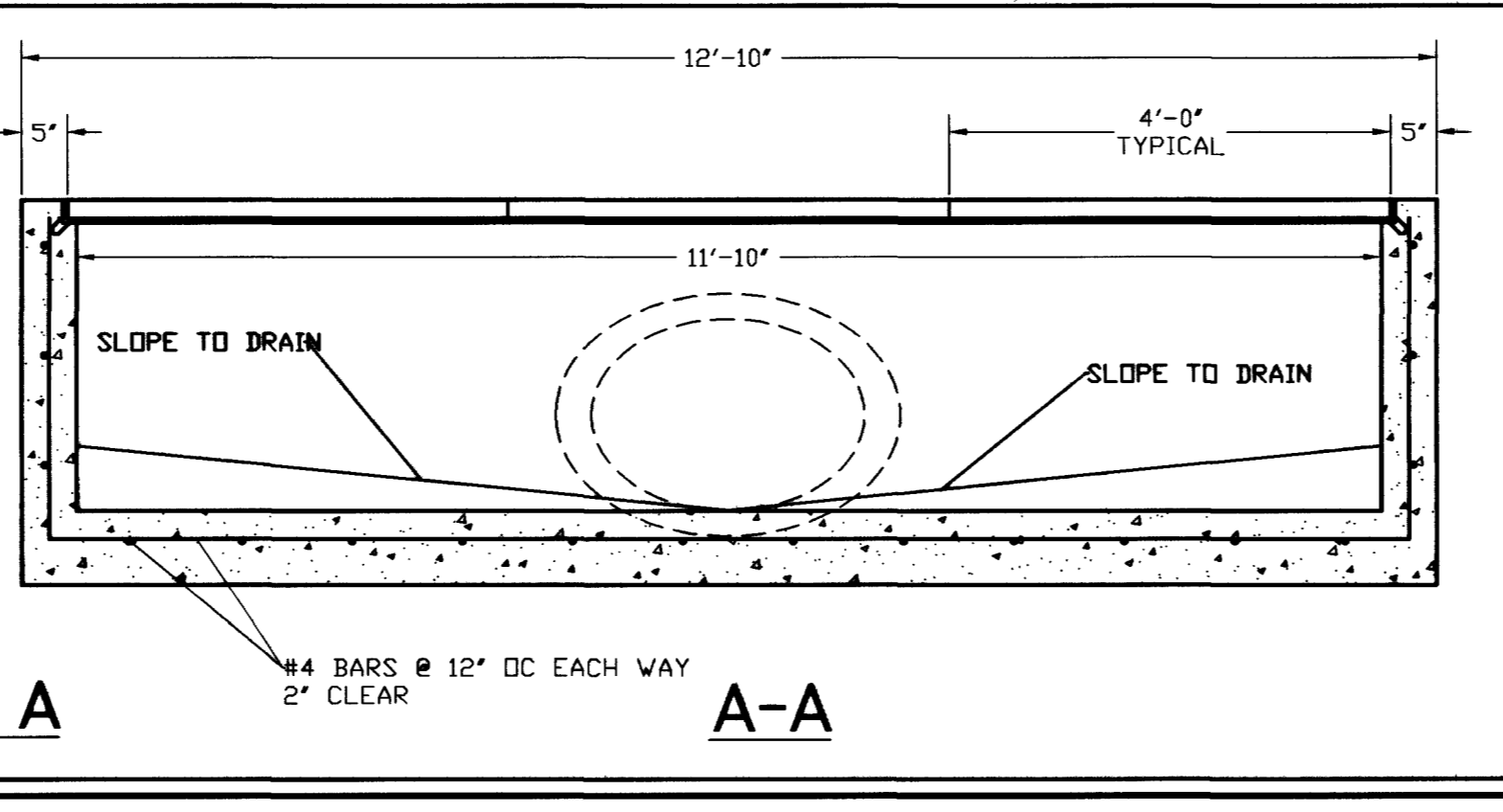
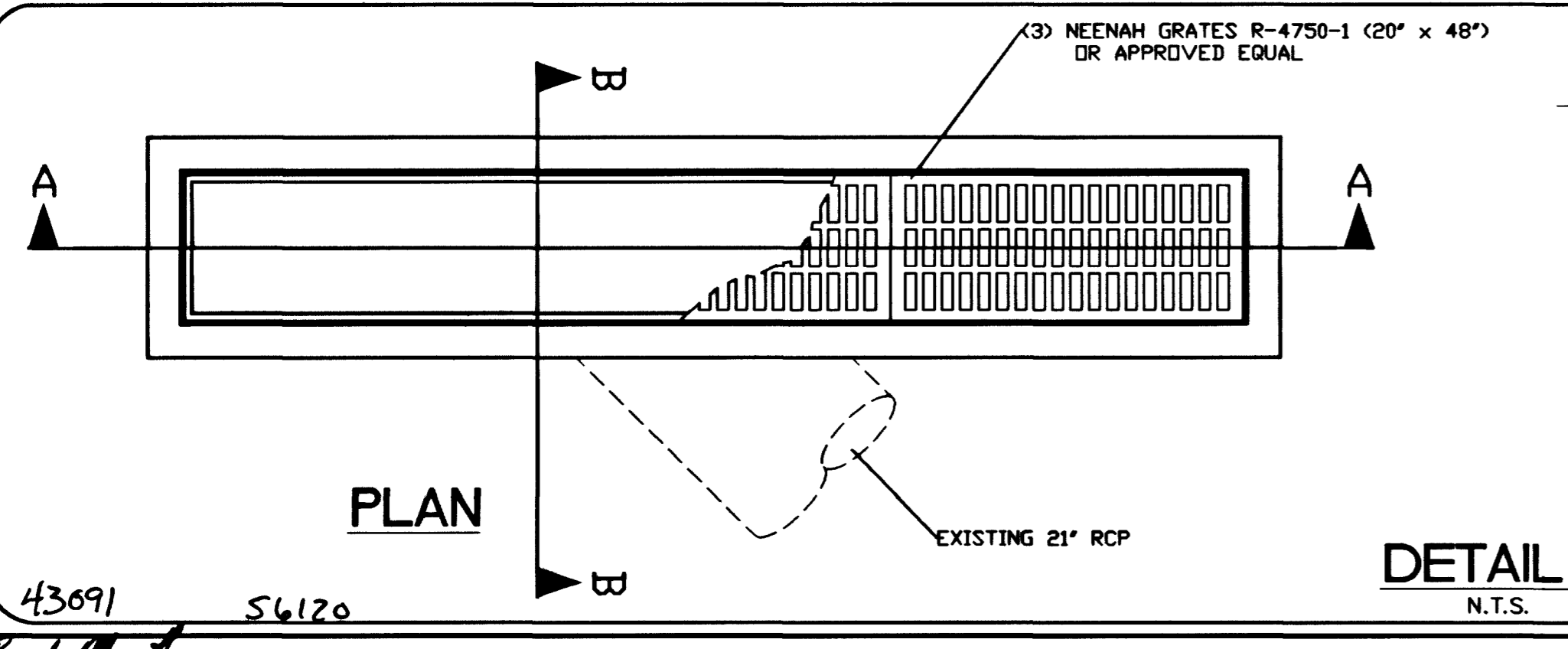
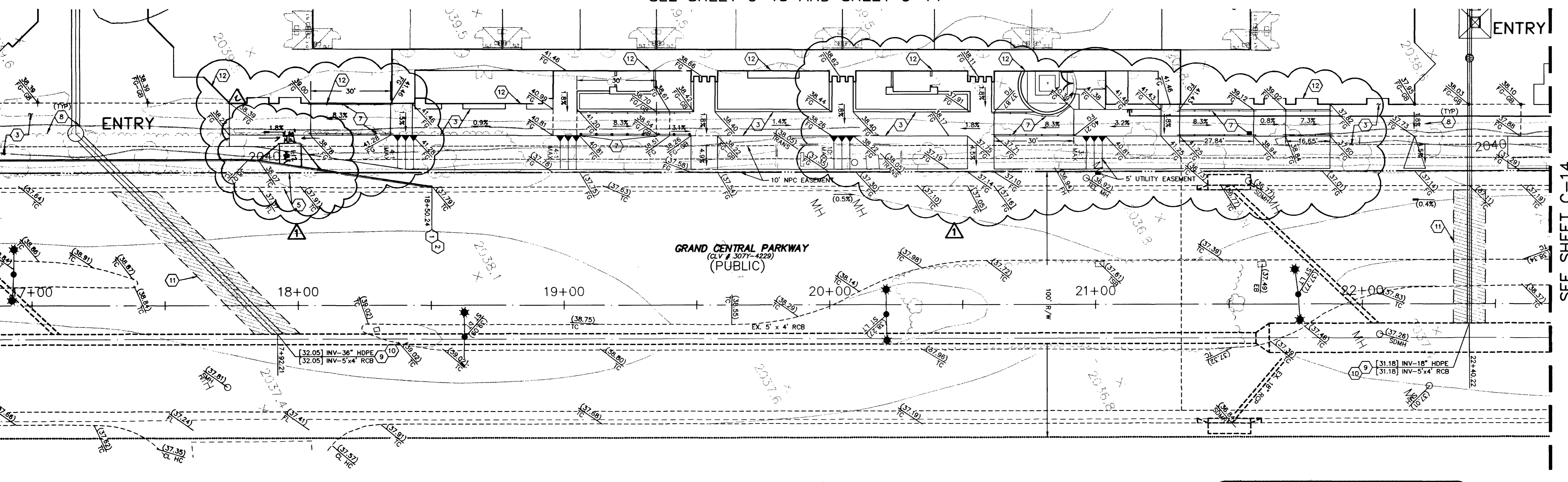
BASIS OF BEARINGS

SOUTH 89°52'25" EAST, BEING THE BEARING OF THE SOUTH LINE OF THE SOUTHEAST QUARTER (SE 1/4) OF SECTION 33, TOWNSHIP 20 SOUTH, RANGE 61 EAST, M.D.M. AS SHOWN BY MAP THEREOF ON FILE IN BOOK 53 OF PLATS, PAGE 61, OF OFFICIAL RECORDS. SAID SECTION LINE ALSO BEING THE CENTERLINE OF CHARLESTON BLVD.

BENCHMARK

CITY OF LAS VEGAS B.M. 2LV01 33C4
 NAVD 88 ELEVATION 623.8552 (M)
 2046.76 (F)

SEE SHEET C-13 AND SHEET C-14



HDPE CONSTRUCTION NOTE:

CONTRACTOR SHALL PROVIDE 30" MINIMUM COVER OVER PIPE PRIOR TO VEHICLE LOADING DURING CONSTRUCTION. TRENCH WIDTH MUST BE WIDE ENOUGH TO ACCOMMODATE COMPACTION EQUIPMENT. SEE MANUFACTURER'S GUIDELINES, PRODUCT NOTE 3.115) AND ASTM D2321. CONTRACTOR SHALL NOT USE HYDRO-HAMMER TYPE COMPACTORS OVER PIPE TRENCH AREA.

DRAINAGE CERTIFICATION

I CERTIFY THIS GRADING PLAN IS IN CONFORMANCE WITH THE APPROVED DRAINAGE STUDY ON FILE WITH THE CITY OF LAS VEGAS FOR THIS PROJECT.

GIA D. NGUYEN P.E. NO. 14918 DATE



43691 56120

LAB VEGAS PREMIUM OUTLET
 CHELSEA PROPERTY GROUP
 GRADING PLAN V

G. C. WALLACE, INC.
 Engineers/Planners/Surveyors
 1555 SOUTH RAINBOW BLVD LAS VEGAS, NEVADA 89146
 TELEPHONE: (702) 804-2000 • FAX: (702) 804-2299
 G. 789-001, V. 001, V. 002, V. 003, V. 004, V. 005, V. 006, V. 007, V. 008, V. 009, V. 010, V. 011, V. 012, V. 013, V. 014, V. 015, V. 016, V. 017, V. 018, V. 019, V. 020, V. 021, V. 022, V. 023, V. 024, V. 025, V. 026, V. 027, V. 028, V. 029, V. 030, V. 031, V. 032, V. 033, V. 034, V. 035, V. 036, V. 037, V. 038, V. 039, V. 040, V. 041, V. 042, V. 043, V. 044, V. 045, V. 046, V. 047, V. 048, V. 049, V. 050, V. 051, V. 052, V. 053, V. 054, V. 055, V. 056, V. 057, V. 058, V. 059, V. 060, V. 061, V. 062, V. 063, V. 064, V. 065, V. 066, V. 067, V. 068, V. 069, V. 070, V. 071, V. 072, V. 073, V. 074, V. 075, V. 076, V. 077, V. 078, V. 079, V. 080, V. 081, V. 082, V. 083, V. 084, V. 085, V. 086, V. 087, V. 088, V. 089, V. 090, V. 091, V. 092, V. 093, V. 094, V. 095, V. 096, V. 097, V. 098, V. 099, V. 100

DATE: 07/15/2022
 107-V3573

16 OF 17 SHTS