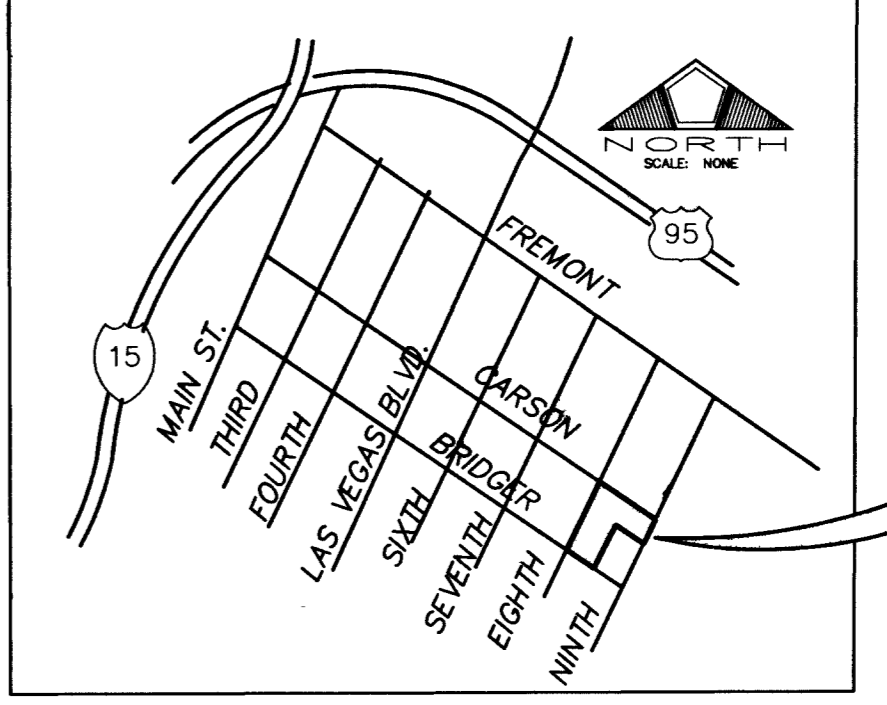
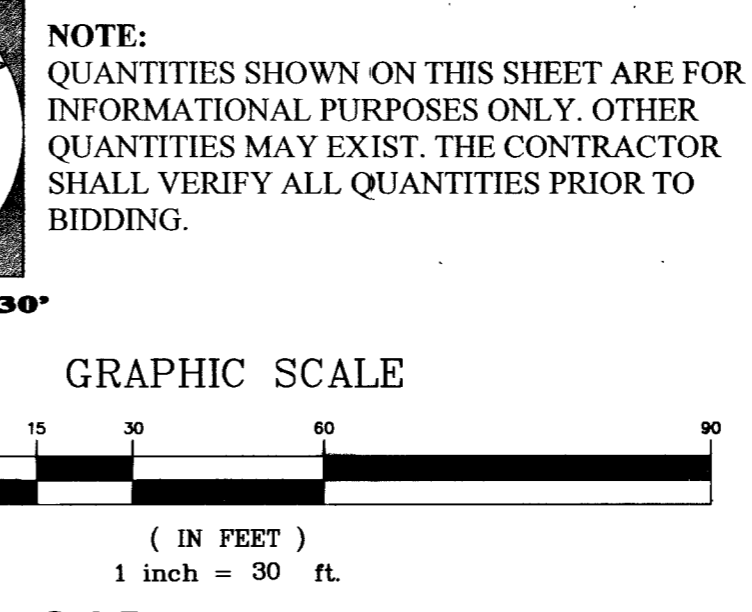
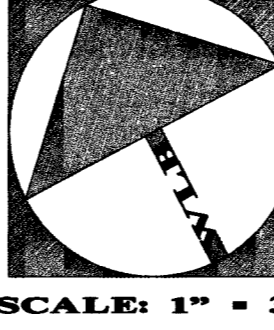


NOTE:
WHERE WATER AND SEWER ARE CROSSING, THE CONTRACTOR SHALL ENSURE COMPLIANCE WITH LVVWD GENERAL NOTE 8 AS SHOWN ON SHEET C2. CONTRACTOR IS RESPONSIBLE TO QUANTIFY ANY ADDITIONAL REQUIREMENTS THIS NOTE REQUIRES PRIOR TO BIDDING. IF ANY CONFLICTS TO EXIST, THE CONTRACTOR IS TO NOTIFY THE ENGINEER IMMEDIATELY.



VICINITY MAP

FIRE DEPARTMENT

FIRE FLOW REQUIREMENT IS 3500 GALLONS PER MINUTE AT 20 POUNDS PER SQUARE INCH RESIDUAL.

BASED ON:
 SQUARE FOOTAGE _____ 146,297 SF
 LARGEST AREA BETWEEN 4-HOUR AREA SEPARATION WALLS _____ N/A
 HEIGHT _____ FOUR (4) STORIES
 TYPE OF CONSTRUCTION _____ V - ONE HOUR
 EXPOSURES _____
 SPRINKLER SYSTEM _____ YES
 OCCUPANCY _____ RESIDENTIAL (R-1)
 ROOF CONSTRUCTION _____

REVIEWED BY: *[Signature]*
 DATE: 3.5.02

APPROVAL OF THESE PLANS SHALL NOT BE CONSTRUED TO BE A PERMIT FOR NOR AN APPROVAL OF ANY VIOLATION OF ANY OF THE PROVISIONS OF THE STATE OR COUNTY LAWS.
 *BASED ON 50% REDUCTION

FIRE DEPARTMENT APPROVAL

APPROVAL BY THE FIRE DEPARTMENT HAVING JURISDICTION IS REQUIRED PRIOR TO OBTAINING FINAL APPROVAL FROM THE LVVWD.

NOTE:
THESE PLANS SHALL NOT, IN PART OR IN WHOLE, BE USED FOR CONSTRUCTION UNTIL APPROVED AND SIGNED BY THE GOVERNING AGENCIES.

CUT AND CAP

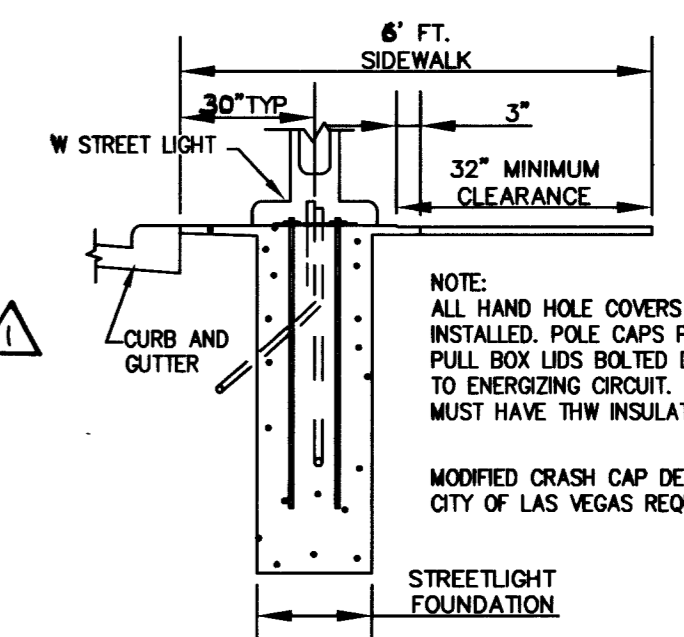
THE CONTRACTOR SHALL CUT THE EXISTING PIPE WHERE SHOWN ON THE DRAWING AND INSTALL A CAP. WHERE A JOINT OR COUPLING IN THE EXISTING PIPE IS UNCOVERED AT THE CUT AND CAP LOCATION, THE INSTALLATION OF A PLUG MAY BE PERMITTED, WITH DISTRICT APPROVAL. A CONCRETE THRUST BLOCK SHALL BE INSTALLED AT ALL CAP OR PLUG LOCATIONS IN ACCORDANCE WITH THE PROVISIONS OF THE DISTRICT'S STANDARD PLATE NO. 5.

WATER CONSTRUCTION NOTES

DESCRIPTION	QUANTITY		EA
	PRIVATE	PUBLIC	
1. INSTALL 6" DCCA PER UDACS PLATE NO. 11D	0	1	EA
2. INSTALL 2" RPPA PER UDACS PLATE NO. 11A	0	3	EA
3. INSTALL 2" WATER METER AND SERVICE PER UDACS PLATE NO. 1D	0	3	EA
4. INSTALL 8" x 6" WET TAP AND 6" GATE VALVE	0	2	EA
5. INSTALL PUBLIC FIRE HYDRANT PER UDACS PLATE NO. 7	0	3	EA
6. REMOVE EXISTING CAP.	0	1	EA
7. INSTALL 8" GATE VALVE	0	1	EA
8. INSTALL 8" CAP	0	1	EA
9. INSTALL 1" RPPA PER UDACS PLATE NO. 11A	0	1	EA
10. INSTALL 1" WATER METER AND SERVICE PER UDACS PLATE NO. 1D	0	1	EA
11. INSTALL 1" BLOWOFF VALVE AND CAP	0	1	EA
12. INSTALL 2"x5" REDUCER (OR EQUIVALENT)	3	0	EA
13. INSTALL 5" 90 BEND	2	0	EA
14. INSTALL 4" CROSS	0	0	EA
15. INSTALL 6" 90° BEND	2	0	EA
16. FOR CONTINUATION SEE PLUMBING PLANS	2	0	EA
17. INSTALL 5" TEE	3	0	EA
18. INSTALL 8" x 8" M.J. TAPPING TEE AND VALVE	0	1	EA
19. TRENCH PER CC STD. DWG. NO. 504. EXACT LIMITS TO BE DETERMINED BY CLV INSPECTOR.			

SEWER CONSTRUCTION NOTES

DESCRIPTION	QUANTITY		EA
	PRIVATE	PUBLIC	
1. INSTALL 60" SSMH PER C.C.S.D. STD. DWG. NO. SD-1	0	2	EA
2. INSTALL 10" PVC SEWER WATER MAIN	30	0	LF
3. SEE PLUMBING PLANS FOR CONNECTION			
INSTALL 6" PVC SEWER LATERAL ~	25	0	LF
SEE PLUMBING PLANS FOR CONNECTION			



BASIS OF BEARINGS

BASIS OF BEARINGS: BEING THE CENTER LINE OF CARSON AVENUE BETWEEN EIGHTH AND NINTH STREETS, AS SHOWN ON RECORD OF SURVEY IN FILE 67, PAGE 79, SHEET 5, OFFICIAL RECORDS, CLARK COUNTY, NEVADA, WHICH BEARS: SOUTH 62°04'42" EAST.

BENCHMARK

RIVET AND PLATE IN TOP OF CURB 9 FEET EAST OF PT AT FREMONT STREET AND 7TH STREET.
 NAVD88 ELEVATION = 610.3011 METERS; 2002.30 FEET.

UTILITY NOTE

UTILITY LOCATIONS SHOWN HEREON ARE APPROXIMATE ONLY. IT SHALL BE THE CONTRACTORS RESPONSIBILITY TO DETERMINE THE EXACT VERTICAL AND HORIZONTAL LOCATION OF ALL EXISTING UNDERGROUND UTILITIES PRIOR TO COMMENCING CONSTRUCTION. NO REPRESENTATION IS MADE THAT ALL EXISTING UTILITIES ARE SHOWN HEREON. THE ENGINEER ASSUMES NO RESPONSIBILITY FOR UTILITIES NOT SHOWN OR UTILITIES NOT SHOWN IN THEIR PROPER LOCATION. HEREON.

DETAIL A
SCALE: 1" = 10"

MANHOLE NUMBER	RIM	INV IN	INV OUT
EX-SSMH #1	(97.48)	(91.78)	(91.78)
EX-SSMH #2	(96.60)	(90.78)	(90.68)
EX-SSMH #3	(96.78)	(90.45)	(90.25)
EX-SSMH #4	(96.77)	(88.87) N	(87.82) E
EX-SSMH #5	(96.86)	(91.01)	(90.81)
EX-SSMH #6	(96.76)	(84.71)	(84.51)
EX-SSMH #7	(98.90)	(90.20)	(90.00)
SSMH #1	97.12	86.42 (10")	85.50

APPROVED FOR CONSTRUCTION
[Signature] 4.18.02
 LAS VEGAS VALLEY WATER DISTRICT DATE

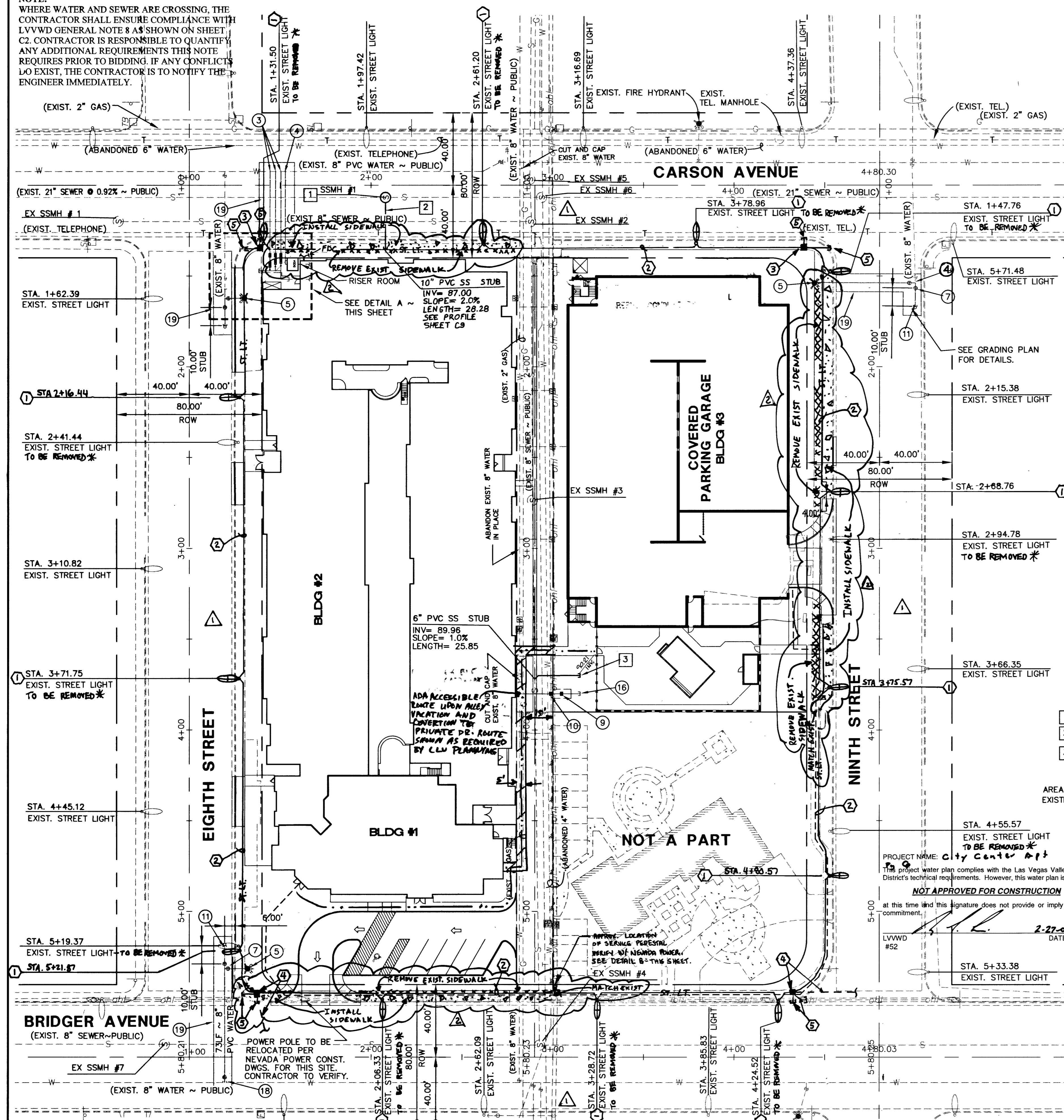
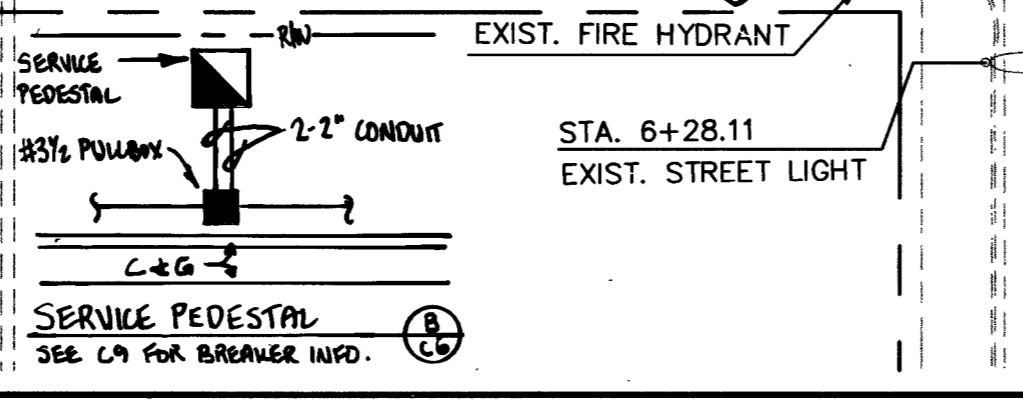
NOTE: PLEASE SEE SHEET C4 FOR INFORMATION REGARDING ABANDONING EXISTING SERVICES.

NOTE *
REMOVING AND RETURN STREET LIGHT POLE IS A WORK TO CITY OF LAS VEGAS YARDS @ 3104 E. BONANZA ROAD. CALL 24 HOURS BEFORE RETURNING @ 225-6931.

SEWER CONTRIBUTION RATE

NUMBER OF UNITS	AVG. DAILY FLOW PER UNIT	TOTAL AVG. DAILY FLOW	PEAK FACTOR	TOTAL PEAK DAILY FLOW
300	175 (GPD) 0.000175 (MGD)	52500.0 (GPD) 0.0525 (MGD)	X 3.4	178500 (GPD) 0.1785 (MGD)

- ST. LT. CONSTRUCTION NOTES**
- INSTALL 250W HPS ST. LT. PER DETAILS ON SHEET C9 OF C9.
 - INSTALL 2" ST. LT. CONDUIT UNDER SIDEWALK.
 - INSTALL #3 1/2 PULLBOX.
 - INTERCEPT EXIST. ST. LT. CIRCUIT. INSTALL #3 1/2 PULLBOX. REPAIR CONDUCTORS.
 - STUB AND CAP CONDUIT.



REVISION BY: *[Signature]*
 REV DATE: 1/16/02
 PROJECT: LAS VEGAS CITY CENTER APARTMENTS
 SHEET TITLE: UTILITY PLAN
 SHEET NO.: C6 OF C9
 DRAWING NO.: 107-V3566
 Scale: AS SHOWN
 Project No.: 020074-A-001
 Drawn by: OF/JG
 Designed by: JPM
 Checked by: ANS.
 SEAL: PROFESSIONAL ENGINEER STATE OF NEVADA
 CIVIL
 No. 7648
 Call before you Dig. 1-800-227-2600
 Call before you Overhead 593-6111