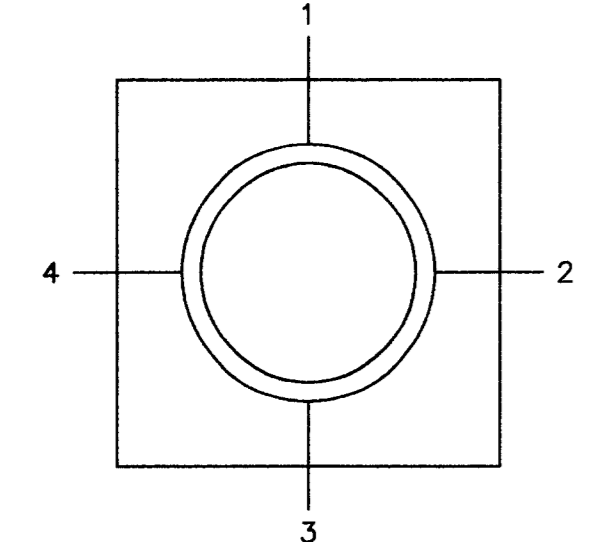
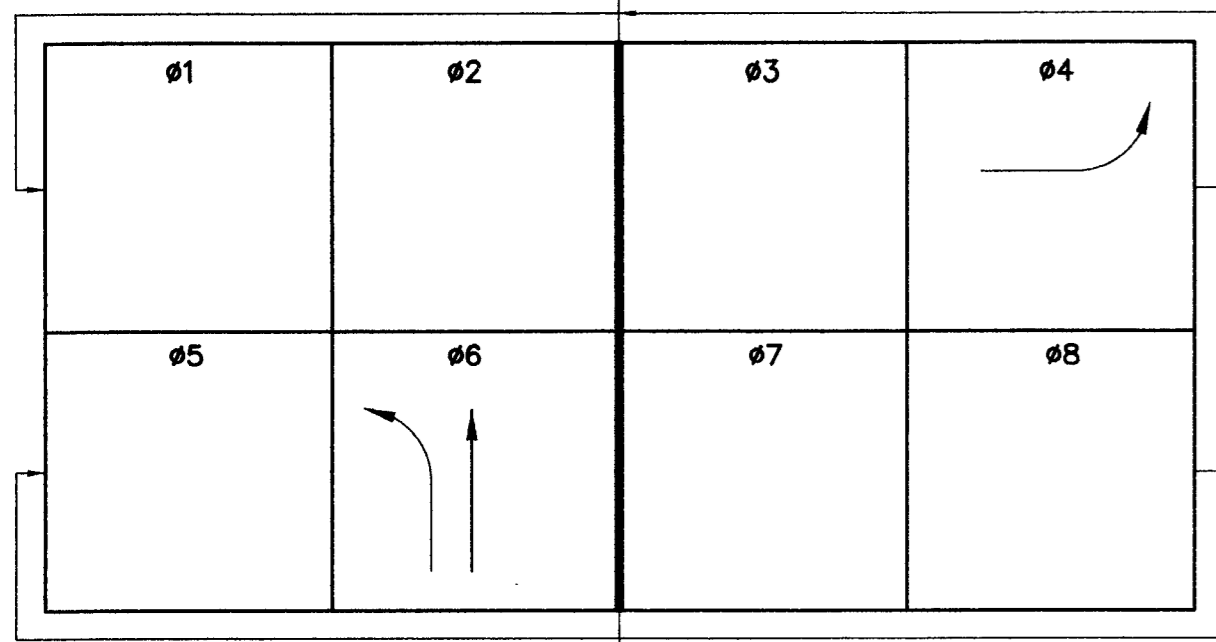
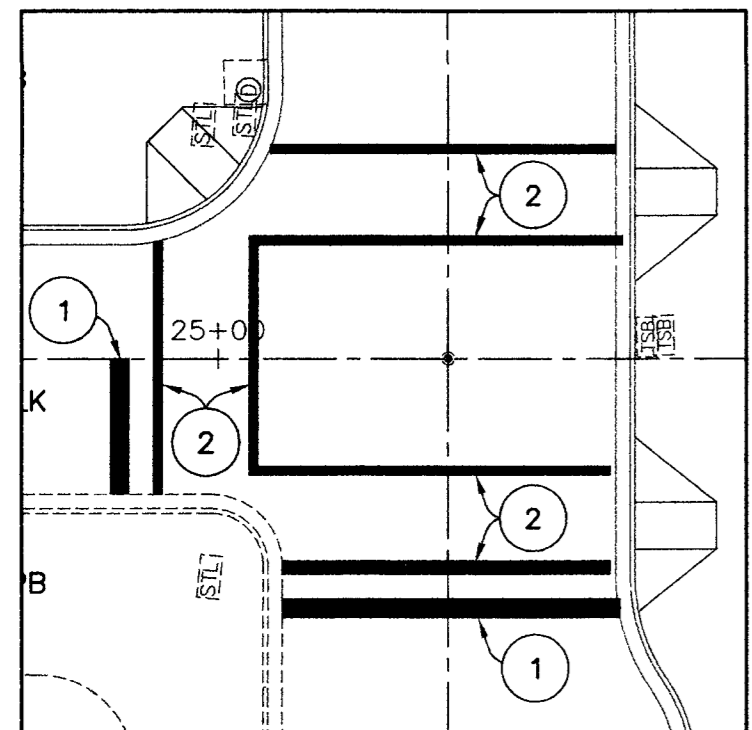


PHASE DIAGRAM (TYP)



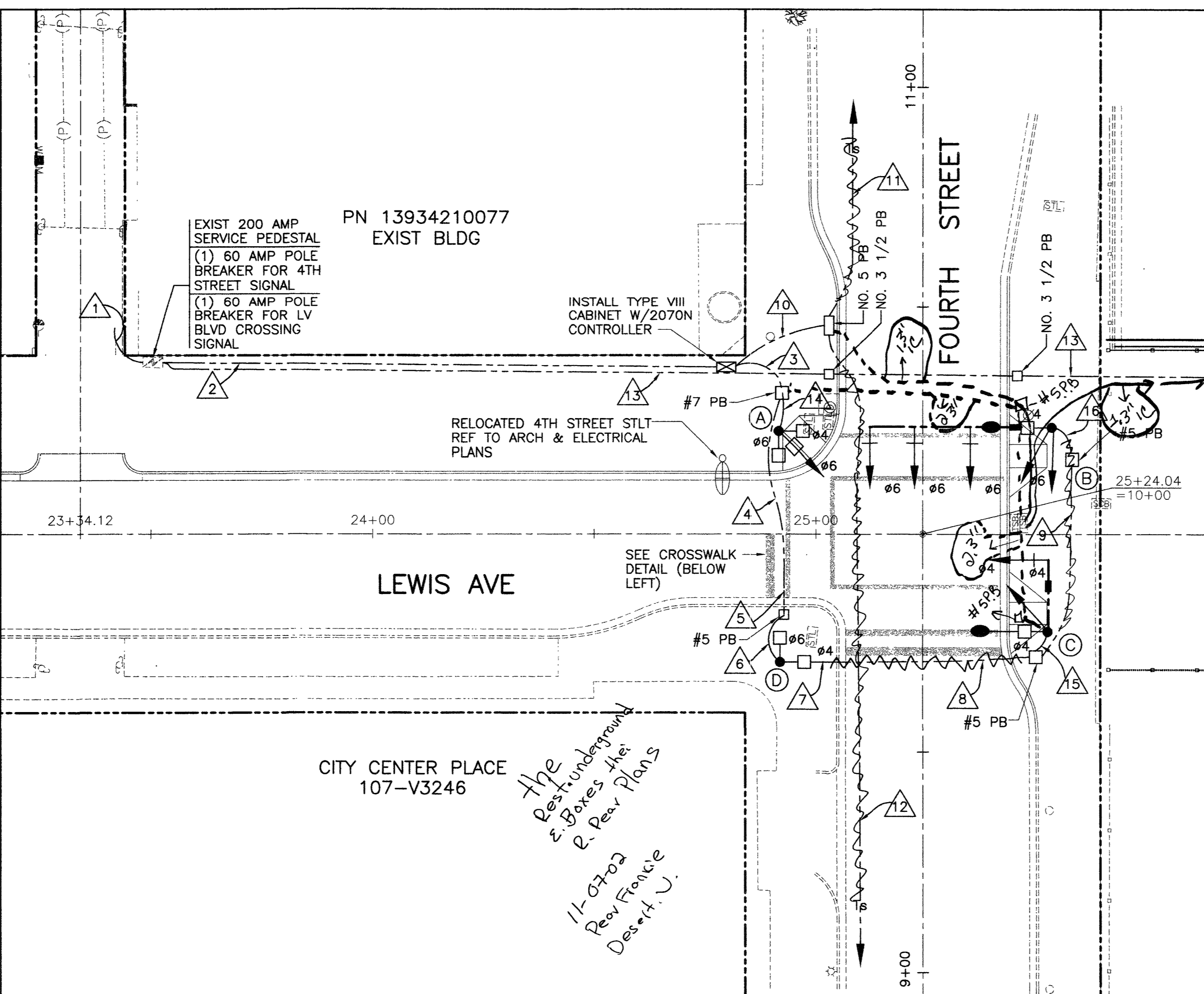
QUADRANT LOCATOR  
ARM OR SIGNAL LOCATION (TOP VIEW)



CROSSWALK DETAIL  
SCALE: 1"=20'

CONSTRUCTION NOTES:

- CONSTRUCT 2 FT STOP BAR PER USD NO. 254 & USS 628.02.03 TYPE I FILM (COLD POLYMER)
- CONSTRUCT PEDESTRIAN CROSSWALK PER USD NO. 254 & USS 628.02.02 TYPE I FILM (COLD POLYMER)



TRAFFIC PLAN  
LEWIS AVE & FOURTH ST  
SCALE: 1"=20'

**LAS VEGAS PAVING CORP.**  
4420 So. Decatur  
LAS VEGAS, NEVADA 89103  
(702) 251-5800 FAX (702) 251-4891

**AS BUILT**

KEY # 6490  
NAME: Lewis Ave  
DATE: 12-10-02 INT: BP

GRAPHIC SCALE  
( IN FEET )  
1 inch = 20 ft.

**LEGEND**  
EXIST CONDUIT  
NEW CONDUIT

TRAFFIC SIGNAL NOTES:

- ALL WORK PERFORMED ON ANY TRAFFIC SIGNAL COMPONENT MUST BE UNDER THE DIRECT ON-SITE SUPERVISION OF AN IMSA CERTIFIED TECHNICIAN. EFFECTIVE MARCH 30, 2000 THE LEVEL OF CERTIFICATION REQUIRED IS LEVEL I, AND THE LEVEL OF CERTIFICATION REQUIRED SHALL BE INCREASED TO LEVEL II EFFECTIVE MARCH 30, 2001.
- THE CONTRACTOR SHALL BE RESPONSIBLE FOR DAMAGE TO ALL EXISTING UTILITIES. THE LOCATIONS OF UNDERGROUND UTILITIES AS SHOWN ON THE PLANS ARE APPROXIMATE ONLY. THE CONTRACTOR SHALL NOTIFY ALL UTILITY COMPANIES TO VERIFY IN THE FIELD THE LOCATIONS OF THEIR INSTALLATIONS 72 HOURS PRIOR TO CONSTRUCTION. CALL-BEFORE-YOU-OVERHEAD 1-702-593-6111 CALL-BEFORE-YOU-DIG 1-800-227-2600
- ALL TRAFFIC SIGNAL INSTALLATIONS SHALL CONFORM TO THE UNIFORM STANDARD DRAWINGS SPECIFICATIONS AND SPECIAL PROVISIONS FOR PUBLIC WORKS' CONSTRUCTION OFF-SITE IMPROVEMENTS, CLARK COUNTY AREA, NEVADA, VOLUMES I AND II, ADOPTED BY THE REGIONAL TRANSPORTATION COMMISSION APRIL 8, 1992 WITH ALL SUBSEQUENT REVISIONS. (REVISIONS THRU MAY 11, 2000)
- SERVICE SHALL HAVE 1-60 AMP SINGLE POLE BREAKER FOR SIGNAL, AND ONE 40 AMP SINGLE POLE BREAKERS FOR STREETLIGHTS. SERVICE SHALL BE 200 AMP PADMOUNT.
- LINE SIDE OF METER TO BE WIRED WITH THREE #3/0 AWG THW. LOAD SIDE SHALL BE WIRED WITH FOUR #4 AWG THW (2 BLACK, 2 WHITE) AND ONE #8 AWG THW (GREEN).
- LUMINAIRES ON ALL SIGNAL POLES SHALL BE 400 WATT HIGH PRESSURE SODIUM CUTOFF (G.E. M400A) WITH MC-111 DISTRIBUTION. EACH LUMINAIRE SHALL HAVE AN INDIVIDUAL 1000 WATT P.E. CONTROL. FOR LUMINAIRES THERE SHALL BE 2(TWO)-#4 AWG THW CONDUCTOR FROM THE SERVICE TO THE CABINET. IN THE CABINET, THE #4 AWG THW CONDUCTORS SHALL BRANCH OFF INTO #10 AWG THW CONDUCTORS INDIVIDUALLY FUSED WITH 10 AMP FUSES. THERE SHALL BE NO SPLICES BETWEEN THE CABINET AND LUMINAIRE FIXTURES.
- THE INTERNALLY ILLUMINATED STREET NAME SIGNS SHALL BE WIRED TO THE LUMINAIRES PHOTO CELL FOR CONTROL WITH #10 AWG THW COPPER STRANDED WIRE (TYPICAL). IN THE EVENT THERE IS NO LUMINAIRE ON THE TRAFFIC SIGNAL POLE, THE 1000 WATT P.E. CONTROL SHALL BE MOUNTED ON THE POLE CAP.
- CHECK CONDUIT AND CABLE SCHEDULE FOR CONDUIT, CABLE, AND WIRE SIZE. VERIFY ALL EXISTING CONDUIT RUNS.
- ALL PULLBOXES SHALL BE IN ACCORDANCE WITH UNIFORM STANDARD DRAWINGS NO. 404.110, NO. 404.120, AND NO. 404.130.
- TRAFFIC SIGNAL CABLE SHALL BE 15 OR 25 CONDUCTOR #14 AWG SOLID (TYPICAL) CABLE AND SHALL CONFORM TO IMSA SPEC. NO. 20-1.
- PEDESTRIAN PUSH BUTTONS SHALL BE AUDIBLE TACTILE TYPE IN ACCORDANCE WITH CITY OF LAS VEGAS SPECIAL PROVISIONS TO SECTION 623 OF THE CCA USS. PUSH BUTTON SIGNS SHALL BE 9" X 12" WITH FULL MOUNTING BRACKETS. ALL PUSH BUTTONS TO BE MOUNTED 36" ABOVE SIDEWALK. THE MAXIMUM HORIZONTAL REACH DISTANCE IS TO BE 24". SIDEWALK RAMPS WILL BE ACCORDING TO U.S.D. NO. 235 (1-4) DATED 12-14-00.
- THE ROUTING AND TERMINATION OF CONDUITS AND THE PLACING OF POLES AND CABINETS SHALL BE AS INDICATED ON THE PLANS. ALL CHANGES SHALL BE APPROVED BY THE ENGINEER.
- MAST ARM R10-12 SIGNS TO BE ADJACENT (NO GAP) TO THE M-5 SIGNAL HEAD.
- INSTALL TYPE VIII CABINET. THIS IS COMMONLY REFERRED TO AS AN "R" CABINET. THE CABINET SHALL CONFORM TO THE UNIFORM STANDARD DRAWINGS SPECIFICATIONS AND SPECIAL PROVISIONS, CLARK COUNTY AREA, NEVADA. INSTALL CABINET NEAR THE R.O.W. LINE OR AS SHOWN ON THE DRAWINGS.
- THE CONTRACTOR SHALL SUPPLY A 2070N CONTROLLER TO THE CITY OF LAS VEGAS TRAFFIC SIGNAL REPAIR SHOP, FOURTEEN DAYS PRIOR TO SIGNAL TURN-ON, FOR TESTING PURPOSES. THE CONTRACTOR SHALL DELIVER THE CONTROLLER TO, AND PICKUP THE CONTROLLER AT 2801 E. CHARLESTON BOULEVARD. CONTRACTOR SHALL NOTIFY THE TRAFFIC SIGNAL REPAIR SHOP (229-6075) SEVEN DAYS PRIOR TO PICKUP. ALL 2070N CONTROLLERS MUST BE COMPATIBLE WITH AND FUNCTION PROPERLY WITH OS9 1996 OPERATION SYSTEM; THE LATEST REVISION OF THE "NEXT PHASE INTERSECTION MANAGEMENT SOFTWARE" (GARDNER TRANSPORTATION SYSTEM) AND THE ICONS (GARDNER TRANSPORTATION SYSTEM) GENERAL SOFTWARE.
- CONTRACTOR SHALL POTHOLE SIGNAL POLE LOCATIONS PRIOR TO ORDERING OF POLES.
- ALL MAST ARMS TO BE HOT-DIP GALVANIZED BY THE MANUFACTURER. THE MAST ARM IS TO BE FABRICATED WITH END TENON ONLY. THE END TENON SHALL BE FACTORY INSTALLED AND THE REMAINING TENONS SHALL BE FABRICATED IN THE FIELD AT THE LOCATION SHOWN ON THE PLANS OR AS DIRECTED BY THE TRAFFIC ENGINEER AND/OR HIS AUTHORIZED REPRESENTATIVE. FOR TENON FABRICATION DETAILS SEE CLARK COUNTY AREA U.S.D. NO. 404.406 SHEET 2. ALL WELDING SHALL CONFORM TO AWS D 2.0, "SPECIFICATION FOR WELDED HIGHWAYS AND RAILWAY BRIDGES," AND TO ANY ADDITIONAL REQUIREMENTS OF SECTION 623 T.02.09 OF THE SPECIFICATIONS. ALL EXPOSED WELDS, SHALL BE PAINTED AS PROVIDED FOR REPAIRING DAMAGED GALVANIZED SURFACES.
- ALL VEHICLE AND PEDESTRIAN SIGNAL INDICATIONS SHALL HAVE LIGHT EMITTING DIODE (LED) TYPE INDICATIONS, IN CONFORMANCE TO CITY OF LAS VEGAS SPECIAL PROVISIONS TO SECTION 623 OF THE CCA USS.
- ALL VEHICLE DETECTION WILL BE BY VIDEO IMAGE DETECTION. EITHER ITERIS VANTAGE PLUS OR AUTO SCOPE 2004 VIDEO DETECTION SYSTEM MUST BE INSTALLED. EACH VIDEO CAMERA WILL HAVE POWER (3/16 COND. PVC JACKETED) AND 8281 COAXIAL CABLE DIRECTLY FROM THE CABINET. CAMERAS WILL BE MOUNTED PER THE MANUFACTURER'S RECOMMENDATIONS AND PER CLV TRAFFIC ENGINEER APPROVAL. "BNC" CONNECTORS ARE THE ONLY ACCEPTABLE TERMINATION OF CABLES.
- IF THE IMPROVEMENTS NECESSITATE THE OBLITERATION, TEMPORARY CONSTRUCTION, TEMPORARY REMOVAL OR RELOCATION OF ANY EXISTING TRAFFIC PAVEMENT MARKING, SUCH PAVEMENT MARKING SHALL BE RESTORED OR REPLACED AT THE CONTRACTORS EXPENSE TO THE SATISFACTION OF THE CITY.
- INTERCONNECT CABLE SHALL BE 25 PAIR OF #22 AWG SHIELD SPECIFICATION REA PE 39.
- THE CONTRACTOR SHALL INSTALL CROSSWALKS, STOP BARS AND SIGNS AS IDENTIFIED ON THE PLANS.

*All wire runs are per plans desert und. all not sum mtr 11-08-02*

WIRE & CABLE	FROM	TO	VIA CONDUIT																		
			1	2	3	4	5	6	7	8	9	10	11	12	13	14	15	16	17	18	19
EXISTING	N.P.Co. SERVICE PT.	SERVICE PEDESTAL	x																		
(4) #4 AWG THW (1) #8 AWG THW	SERVICE PED.	CONTROLLER-4TH		x																	
(4) #4 AWG THW (1) #8 AWG THW	SERVICE PED.	CONTROLLER-LV BLVD																		x	
(4) #4 AWG THW 25 COND #14 AWG THW 2-#10 AWG THW	CONTROLLER	POLE A			x																x
25 COND #14 AWG THW 2-#10 AWG THW	#7 PB	EXISTING STUB				x															
25 COND #14 AWG THW 2-#10 AWG THW	EXISTING STUB	#5 PB					x														
25 COND #14 AWG THW 2-#10 AWG THW	PULL BOX	POLE D						x													
25 COND #14 AWG THW 2-#10 AWG THW	POLE D	EXISTING STUB							x												
25 COND #14 AWG THW 2-#10 AWG THW	EXISTING STUB	POLE C								x											x
25 COND #14 AWG THW 2-#10 AWG THW	POLE C	POLE B									x										x
OPTICOM CABLE	OPTICOM CABLE	POLE C		x	x	x	x	x	x												
OPTICOM CABLE	OPTICOM CABLE	POLE B		x	x	x	x	x	x												
INTERCONNECT	CONTROLLER	BRIDGER									x	x									
INTERCONNECT	CONTROLLER	CLARK											x	x							
CONDUIT SIZE				2"	2"	3"	2-3"	2-3"	3"	3"	3"	3"	3"	3"	3"	2"	2"	2"			
			(E)	(E)	(E)	(E)	(E)	(E)	(E)	(E)	(E)	(E)	(E)	(E)	(E)	(E)	(E)	(E)	(E)	(E)	(E)

A NO. 8 GREEN GROUNDING WIRE SHALL BE RUN FROM THE CONTROLLER CABINET TO EACH SIGNAL POLE BASE.

STREET NAME AND BLOCK NUMBER SIGN TABLE

POLE	LEGEND	WIDTH	BLOCK #
(B)	LEWIS AVENUE	8-FOOT	300
(C)	← FOURTH STREET	8-FOOT	400

STREET NAME SIGNS FOR POLES B & C PER USD 404.416 & 404.417 ARROW SYMBOL ADDED TO FOURTH STREET SIGN

POLE SCHEDULE

POLE	LOCATION STATION (OFFSET)	POLE				SIGNALS (VEH.)		SIGNALS (PED.)		PEDESTRIAN PUSH BUTTON		REMARKS	
		TYPE	SIGNAL ARM QUAD.	SIGNAL ARM LENGTH	LUM. ARM QUAD.	LUM. ARM LENGTH	TYPE	QUAD.	TYPE	QUAD.	QUAD. (PHASE)		SIGN
(A)	24+95.00 25' LT	1-A	-	-	-	-	A-2T B-2T	TOP MOUNT	W-3T	1	2 3	LT RT	ALL SIGNAL HEADS SHALL BE BALL INDICATORS TYPE "C" FOUNDATION STD DWG 404.203
(B)	10+22.00 29' RT	XX-30	4	40'	4	15'	(3)M-2	MAST ARM	W-0T	2	3	LT	TYPE "H" FOUNDATION STD DWG 404.208 SIGNAL HEADS TO BE MOUNTED HORIZONTALLY
(C)	9+78.00 29' RT	XX-30	1	15'	4'	15'	M-2 B-1T	MAST ARM 2	W-0T	2	1	RT	TYPE "H" FOUNDATION STD DWG 404.208 SIGNAL HEADS TO BE MOUNTED HORIZONTALLY ALL SIGNAL HEADS SHALL BE BALL INDICATORS INSTALL R3-1 SIGN NEXT TO M-2 HEAD LUMINAIRE MAST ARM TO BE MOUNTED AT 90° TO SIGNAL ARM
(D)	24+97.00 24' RT	1-B	-	-	-	-	-	-	W-2T	TOP MOUNT	2	RT	EXISTING
											1	LT	

- NOTES:
- THE CABINET SHALL INCLUDE AN UNINTERRUPTIBLE POWER SYSTEM (UPS). SEE SUBSECTION 623T.02.14 OF THE SUPPLEMENTAL SPECIFICATIONS.
  - CONTRACTOR TO PULL NEW WIRE IN EXISTING CONDUIT UNLESS OTHERWISE NOTED

BID NO. 02.1730.18

CALL BEFORE YOU DIG  
1-702-583-6111  
NEVADA POWER ENVIRONMENT & SAFETY SERVICES DEPARTMENT  
Call before you Dig.  
1-800-227-2600

REVISIONS	NO.	DATE	DESCRIPTION

ENGINEERS PLANNERS SURVEYORS  
LANDSCAPE ARCHITECTS  
**POGEMEYER**  
DESIGN GROUP INC.  
2801 NORTH TENAYA WAY  
LAS VEGAS, NEVADA 89128 (702) 255-8100

LEWIS AVENUE CORRIDOR IMPROVEMENTS  
FPN STP-0170(075)  
TRAFFIC PLAN - LEWIS AVE  
LEWIS AVE + FOURTH STREET

PROFESSIONAL ENGINEER STATE OF NEVADA  
GEORGE G. POGEMEYER  
No. 15057

Sheet  
**C4.01**  
11 of 46  
DRAWING NO.  
107-V3502