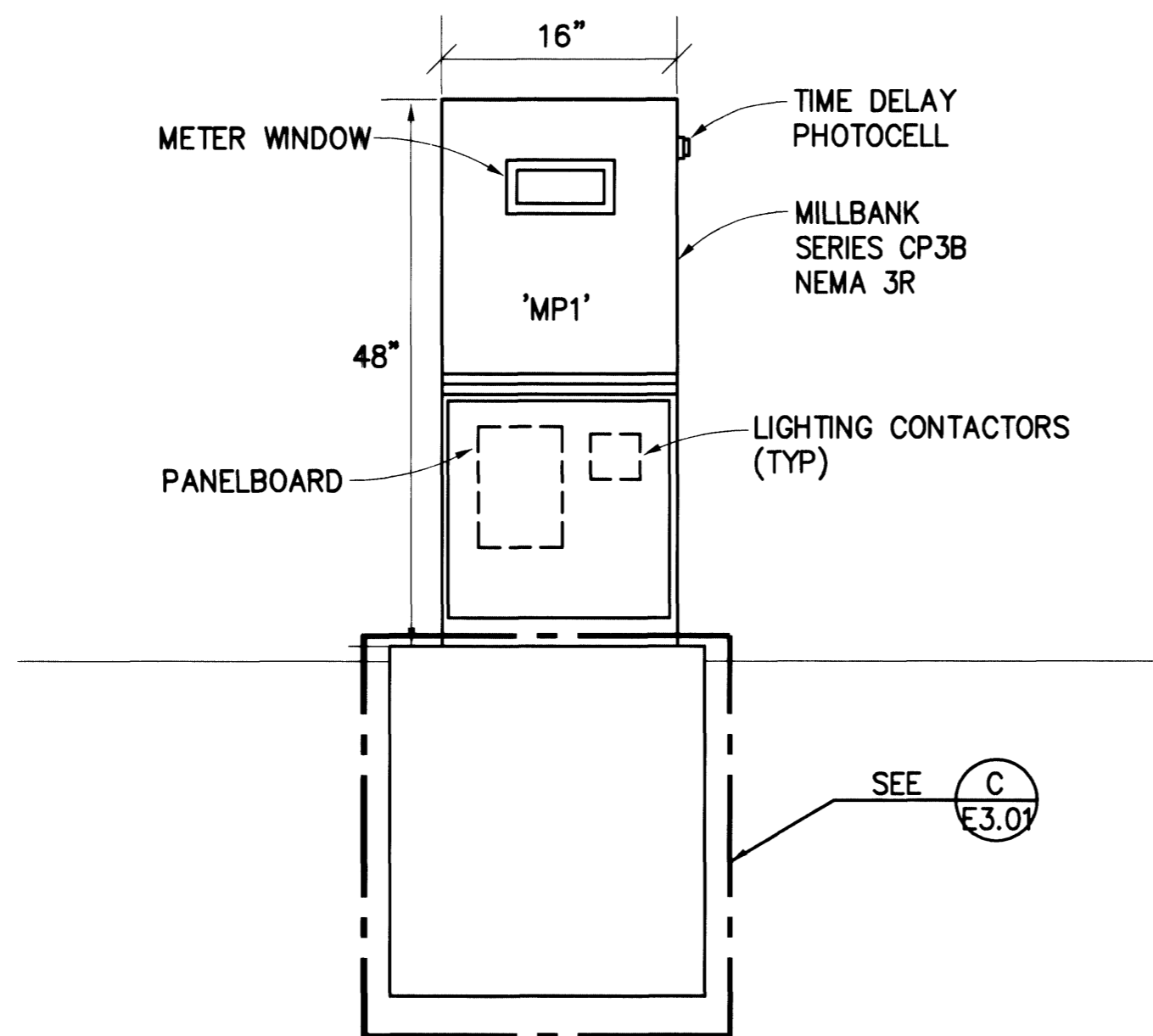


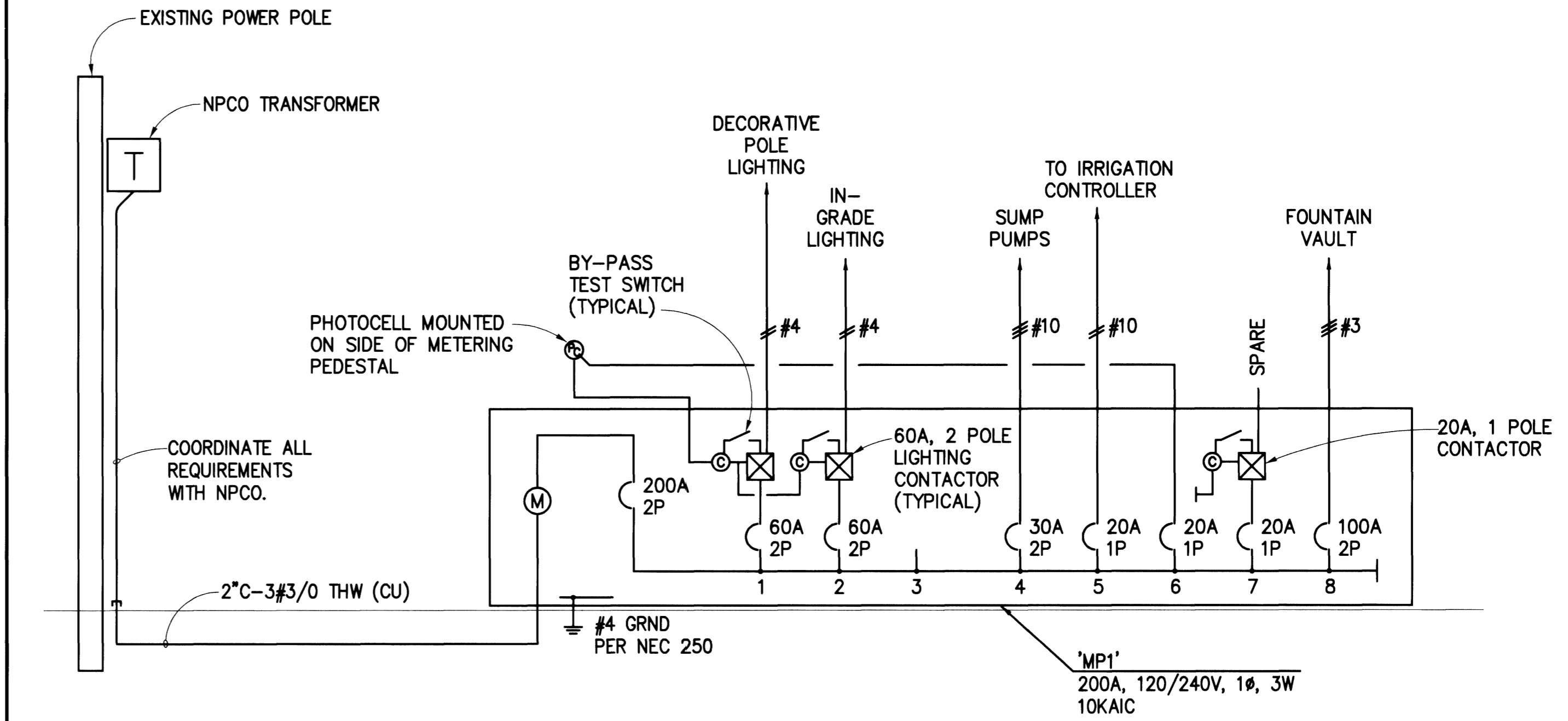
**NOTES FOR METERING PEDESTAL DIAGRAM**

- METERING PEDESTAL SHALL BE MILLBANK SERIES CP3B OR EQUIVALENT.
- MADE ELECTRODE SHALL BE IN ACCORDANCE WITH ARTICLE 250-50 OF THE NATIONAL ELECTRICAL CODE AND MUST BE COPPER OR COPPER PLATED.
- FINISH, ZINC CHROMATE PRIMER WITH BEIGE BAKED ENAMEL.
- MAIN BREAKER TO BE AS SPECIFIED.
- ALL BUSS MATERIAL AND WIRE CONDUCTORS SHALL BE COPPER.
- COMPLY WITH N.P.CO. AND CITY OF LAS VEGAS SERVICE REQUIREMENTS.
- TOP OF CRASH CAP TO SLOPE DOWN AND AWAY FROM THE STANDARD FOR DRAINAGE.



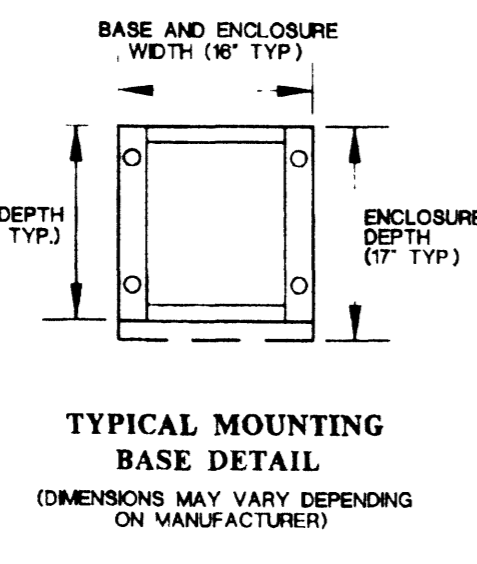
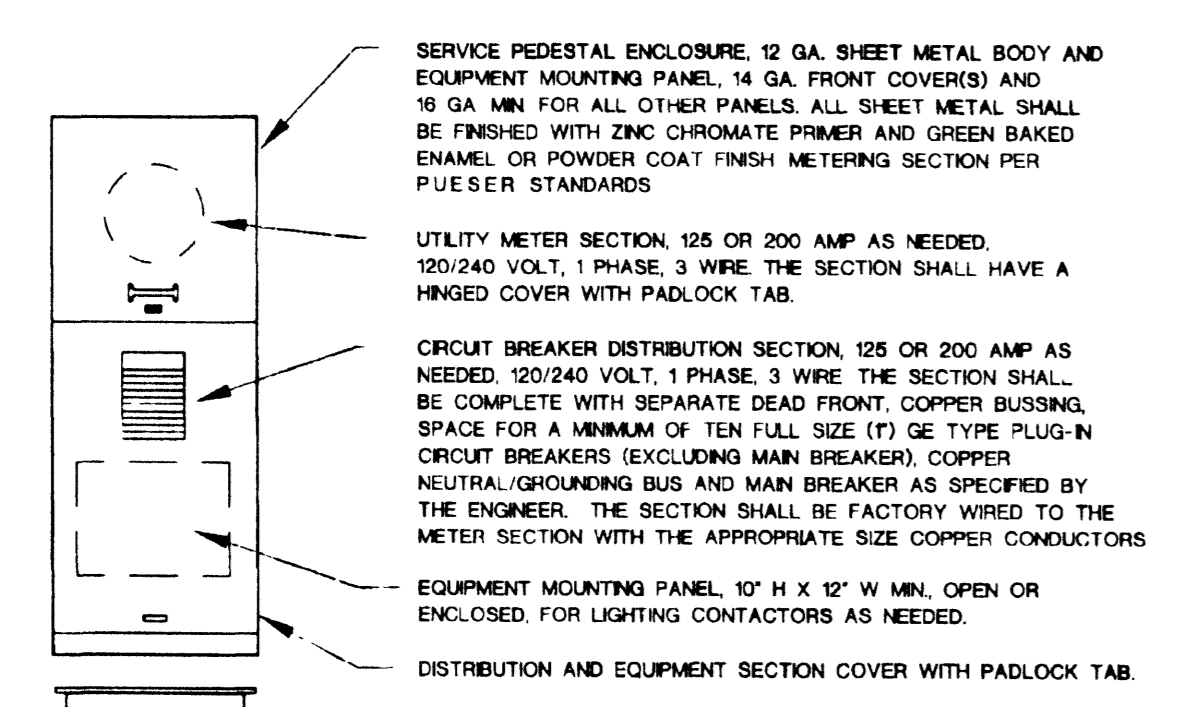
**METERING PEDESTAL DIAGRAM**  
N.T.S.

**B**  
E.3.01



**SINGLE LINE DIAGRAM**  
N.T.S.

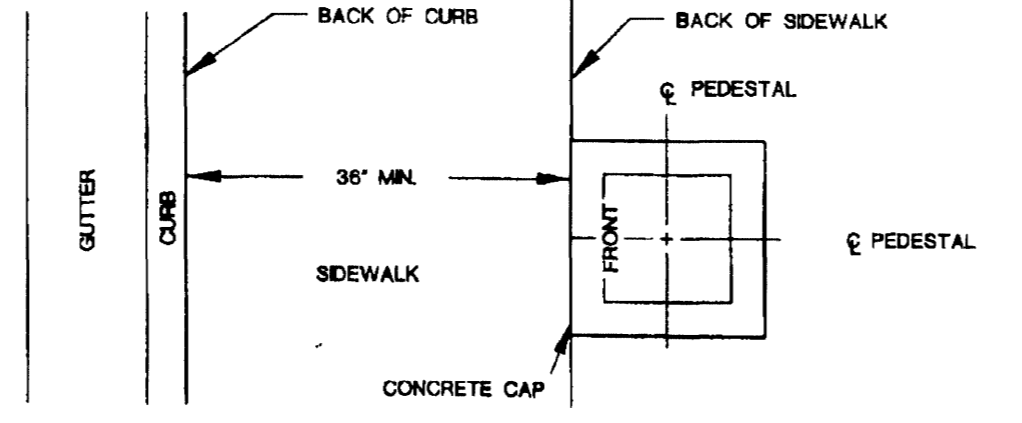
**A**  
E.3.01



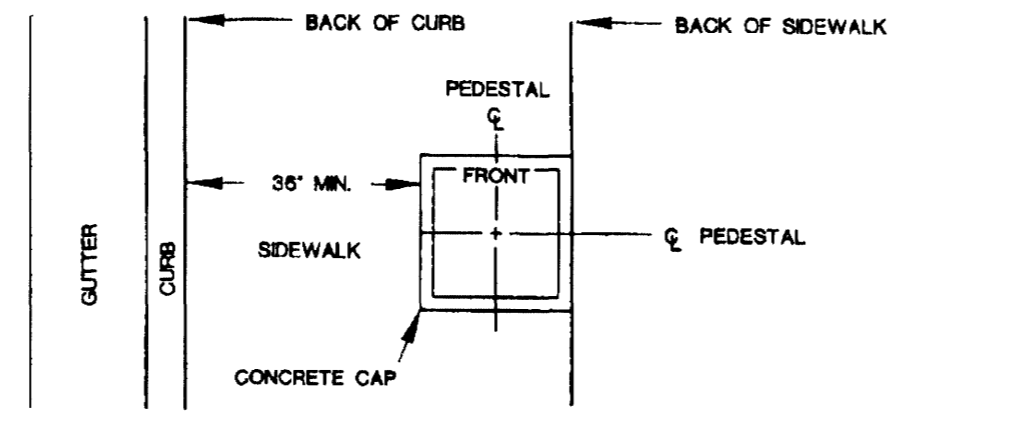
SPECIFICATION REFERENCE	UNIFORM STANDARD DRAWINGS CLARK COUNTY AREA
506	STEEL STRUCTURES
623	TRAFFIC SIGNALS & STREETLIGHTING
SINGLE METER SERVICE PEDESTAL	
DATE 8-12-99   DWG. NO. 330   PAGE NO. 90	

**METERING PEDESTAL DIAGRAM**  
N.T.S.

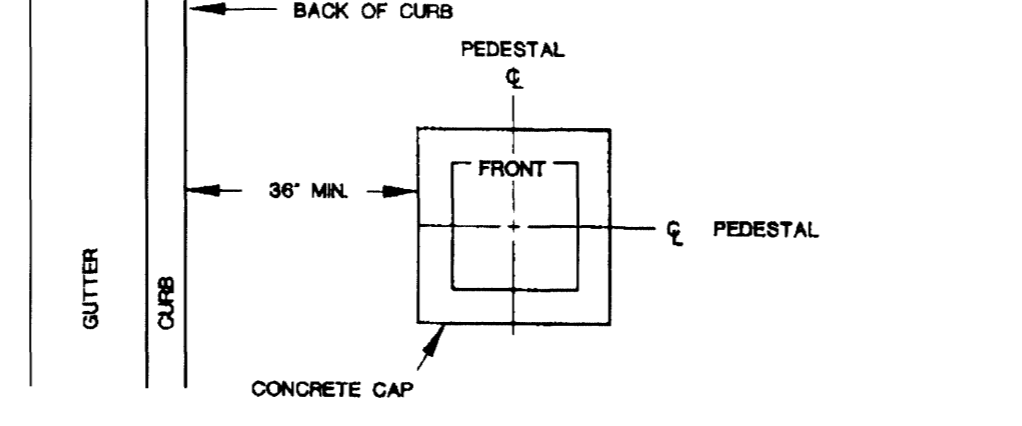
**E**  
E.3.01



**BEHIND SIDEWALK (FOR WIDTHS LESS THAN 5 FT.)**



**BACK PORTION OF SIDEWALK (FOR WIDTHS OF 5 FT. OR GREATER)**

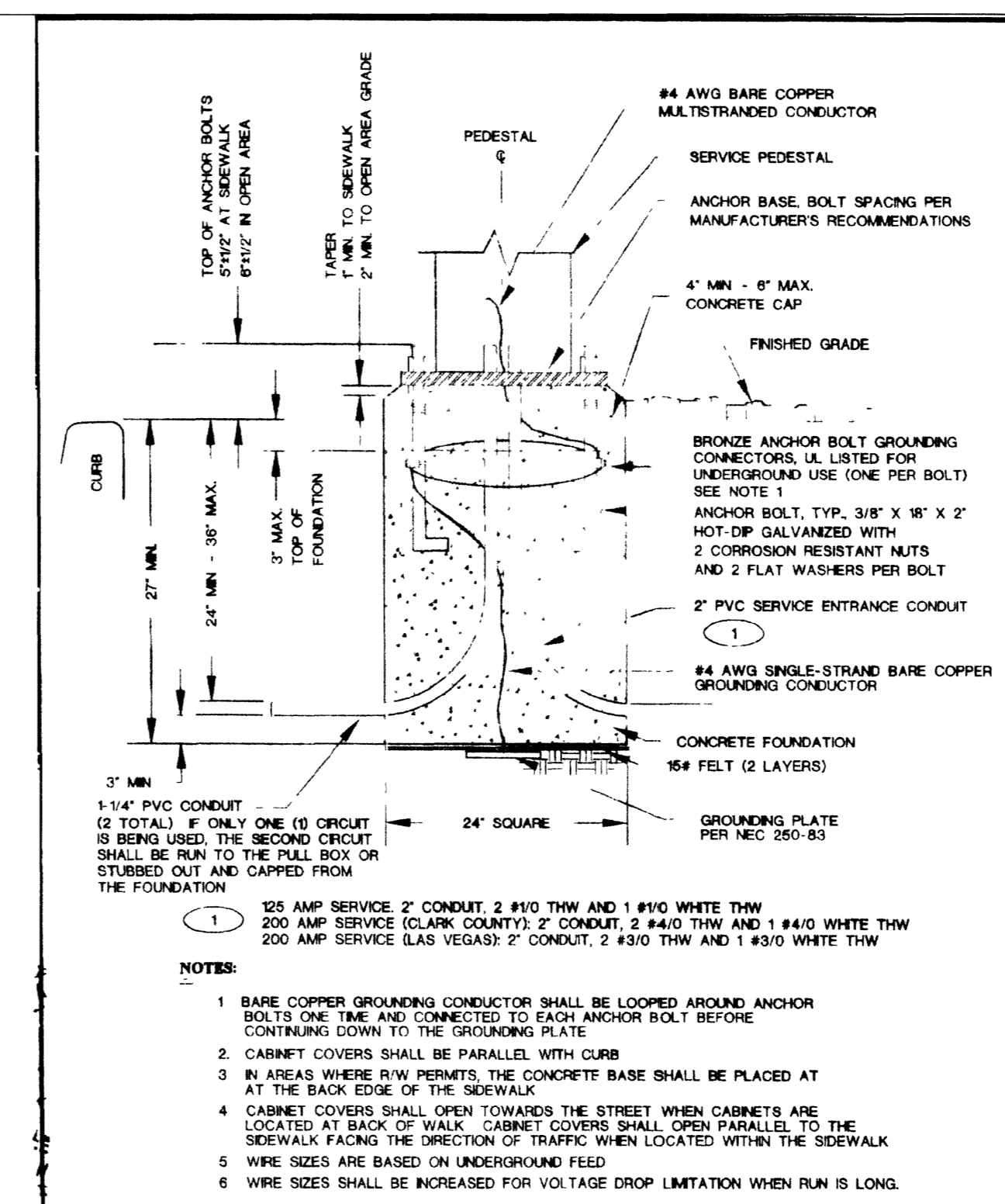


**OPEN AREA**

SPECIFICATION REFERENCE	UNIFORM STANDARD DRAWINGS CLARK COUNTY AREA
501	PORTLAND CEMENT CONCRETE
623	TRAFFIC SIGNALS & STREETLIGHTING
SERVICE PEDESTAL SETBACK	
DATE 12-12-98   DWG. NO. 331   PAGE NO. 91	

**METERING PEDESTAL DIAGRAM**  
N.T.S.

**D**  
E.3.01



SPECIFICATION REFERENCE	UNIFORM STANDARD DRAWINGS CLARK COUNTY AREA
501	PORTLAND CEMENT CONCRETE
623	TRAFFIC SIGNALS & STREETLIGHTING
SERVICE PEDESTAL FOUNDATION	
DATE 2-10-00   DWG. NO. 332   PAGE NO. 92	

**METERING PEDESTAL DIAGRAM**  
N.T.S.

**C**  
E.3.01

**LOAD CALCULATIONS**

MS1		
LIGHTING	5.4KVA X 1.25	= 6.8 KVA
FOUNTAIN		= 18.5 KVA
IRRIGATION CONTROLLER		= 0.4 KVA
SUMP PUMPS		= 3.0 KVA
25% OF LARGEST MOTOR		= 3.0 KVA
<b>TOTAL</b>		<b>= 31.7 KVA</b>

31.7 KVA IS 132 AMPS @ 240V, 1Ø.

REVISIONS

NO.	DATE	DESCRIPTION

APP'D

CONSULTING ENGINEERS

**jba**

2200 Bridgeway Boulevard  
 Suite 500  
 San Francisco, CA 94133  
 (415) 771-3344  
 www.jba.com

LEWIS AVENUE CORRIDOR IMPROVEMENTS  
 FPN STP-0170(075)

**SINGLE LINE DIAGRAM AND DETAILS**

BID NO. 02.1730.18

SHEET: E3.01  
 41 of 46  
 DRAWING NO. 107-V3502