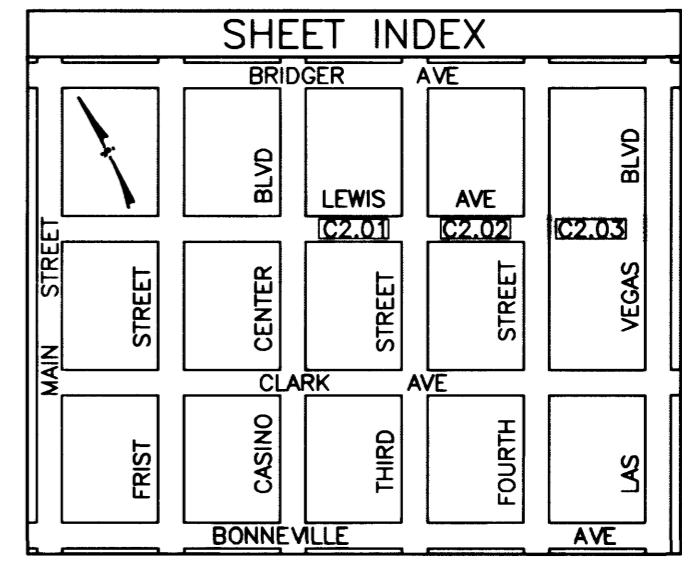
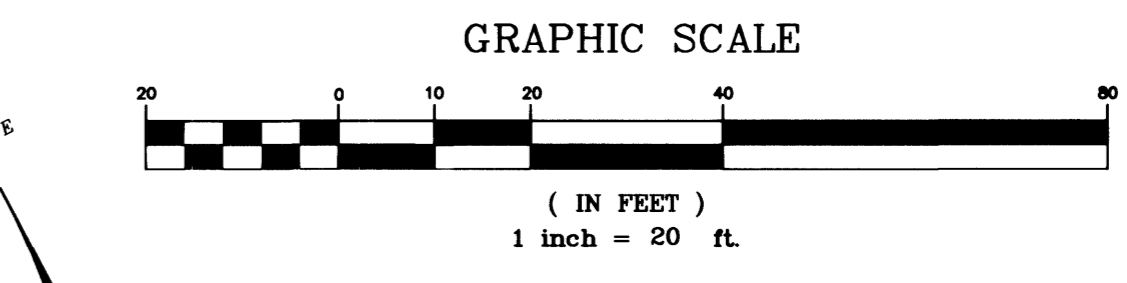
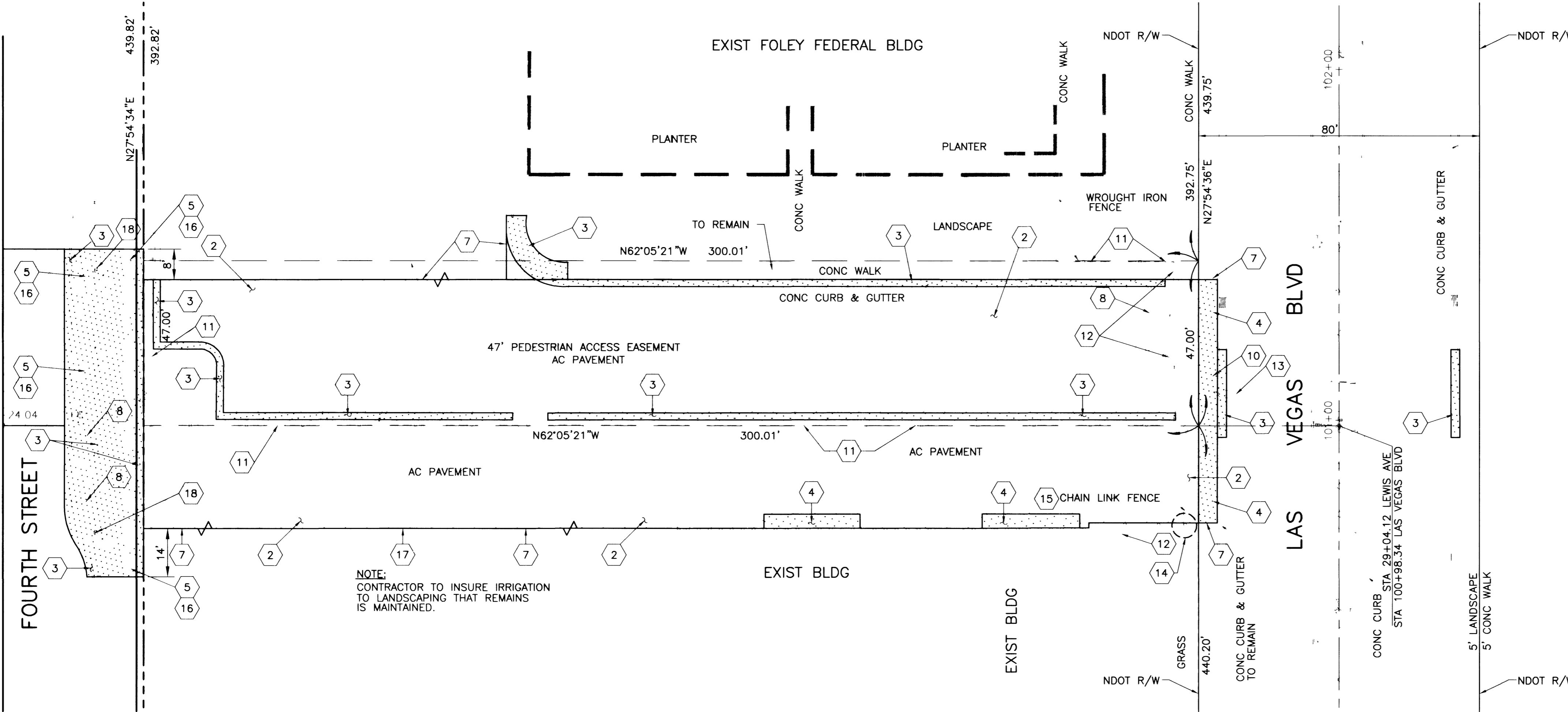


(SEE SHEET C2.02)
MATCHLINE STA 25+24.04



DEMOLITION LEGEND

- REMOVE EXIST CONCRETE CURB, GUTTER, SIDEWALK, CROSS GUTTER, CONCRETE DRIVEWAY
- DENOTES EXIST AC REMOVAL

DEMOLITION KEYNOTES:

- 1 REMOVE EXISTING STREET LIGHT POLE LUMINAIRE, AND FOUNDATION, ALL EXIST STREET LIGHTS REMOVED RETURN TO CLV YARD AT 3104 E. BONANZA RD (CALL 229-6331 BEFORE REMOVING EXISTING STREET LIGHT FOUNDATIONS). REMOVE EXIST STREET LIGHT CONDUIT AND WIRE THAT IS NOT GOING TO BE USED W/NEW STREET LIGHTING SYSTEM.
- 2 REMOVE EXISTING ASPHALTIC CONCRETE
- 3 EXISTING CURB & GUTTER AND CONCRETE TO BE REMOVED
- 4 REMOVE EXISTING SIDEWALK
- 5 REMOVE EXISTING TREES/VEGETATION WITHIN LIMITS OF WORK
- 6 PROTECT IN PLACE
- 7 SAWCUT EXIST PAVEMENT OR CONCRETE TO THE LIMITS SHOWN HEREIN
- 8 REMOVE EXISTING SIGN & FOUNDATION
- 9 REMOVE EXISTING PARKING METERS AND RETURN TO THE CITY OF LAS VEGAS AT 3104 E. BONANZA ROAD (CALL 229-6331 BEFORE REMOVING)
- 10 ADJUST TO FINISHED GRADE, VALVE SHALL BE ACCESSIBLE AT ALL TIMES
- 11 REMOVE AND RELOCATE EXISTING WROUGHT IRON FENCE AS SHOWN ON LANDSCAPE PLANS SHEET L1.02 AND L1.03. CUT WROUGHT IRON PANELS FROM EXISTING POLES, REMOVE POST AND FOUNDATION, AND STORE PANELS FOR RELOCATION.
- 12 REMOVE EXISTING WROUGHT IRON GATE AND FENCE
- 13 REMOVE STREET LIGHT POLE. REMOVE FOUNDATION MIN 18" BELOW FG. INSTALL #3-1/2 PULL BOX OVER EXISTING CONDUIT & WIRE. RETURN TO CLV YARD AT 3104 E. BONANZA.
- 14 PROTECT EXISTING TREE
- 15 REMOVE CHAIN LINK FENCE
- 16 REMOVE UP LIGHTING, BOLLARDS, AND CONC SEATING WITHIN LIMITS OF WORK. RETURN TO CLV YARD AT 3104 E. BONANZA.
- 17 TEMPORARY SIX FOOT HIGH SECURITY FENCE EMBEDDED IN EXISTING ASPHALT OR NEW PERMANENT FENCE INSTALLED AND APPROVED PRIOR TO DEMOLITION
- 18 ADJUST WATER VALVE TO FINISH GRADE

UTILITY NOTE:

THE LOCATION OF UNDERGROUND UTILITIES SHOWN HEREON HAS BEEN DETERMINED FROM SURFACE EVIDENCE OF THEIR EXISTENCE OR FROM INFORMATION OBTAINED FROM THE UTILITY COMPANIES. THE ENGINEER ACCEPTS NO LIABILITY FOR THE EXISTENCE OR NON-EXISTENCE OF UTILITY LINES. CONTRACTORS AND OTHERS USING THIS DRAWING MUST CONFIRM THE LOCATION OF UNDERGROUND LINES OR STRUCTURES WITH THE UTILITY COMPANIES PRIOR TO COMMENCING ANY EXCAVATION OR ORDERING OF MATERIALS.
CALL 1-800-227-2600 BEFORE ANY EXCAVATION TAKES PLACE

APPROVED FOR CONSTRUCTION
[Signature] 2/22/02
LAS VEGAS VALLEY WATER DISTRICT DATE

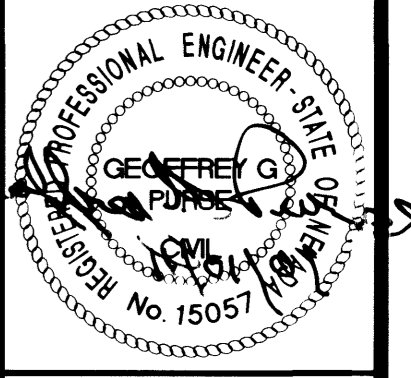
CALL BEFORE YOU DO OVERHEAD
1-702-593-6111
NEVADA POWER ENVIRONMENT & SAFETY SERVICES DEPARTMENT

Avoid cutting underground utility lines. It's costly.
Call before you Dig.
1-800-227-2600

NO.	DATE	DESCRIPTION	APP'D

ENGINEERS PLANNERS SURVEYORS
LANDSCAPE ARCHITECTS
POGGEMEYER INC.
DESIGN GROUP INC.
2601 NORTH TENAYA WAY
LAS VEGAS, NEVADA 89128 (702) 255-8100

TITLE: LEWIS AVENUE CORRIDOR IMPROVEMENTS FPN STP-0170(075)
SHEET: DEMOLITION PLAN - LEWIS AVE 4TH STREET TO LAS VEGAS BLVD



Sheet
C2.03
7 of 46
DRAWING NO.
107-V3502

BID NO. 02.1730.18