

DEMOLITION LEGEND

- REMOVE EXIST CONCRETE CURB, GUTTER, SIDEWALK, CROSS GUTTER, CONCRETE DRIVEWAY, AND CONC PAD.
- DENOTES EXIST AC REMOVAL

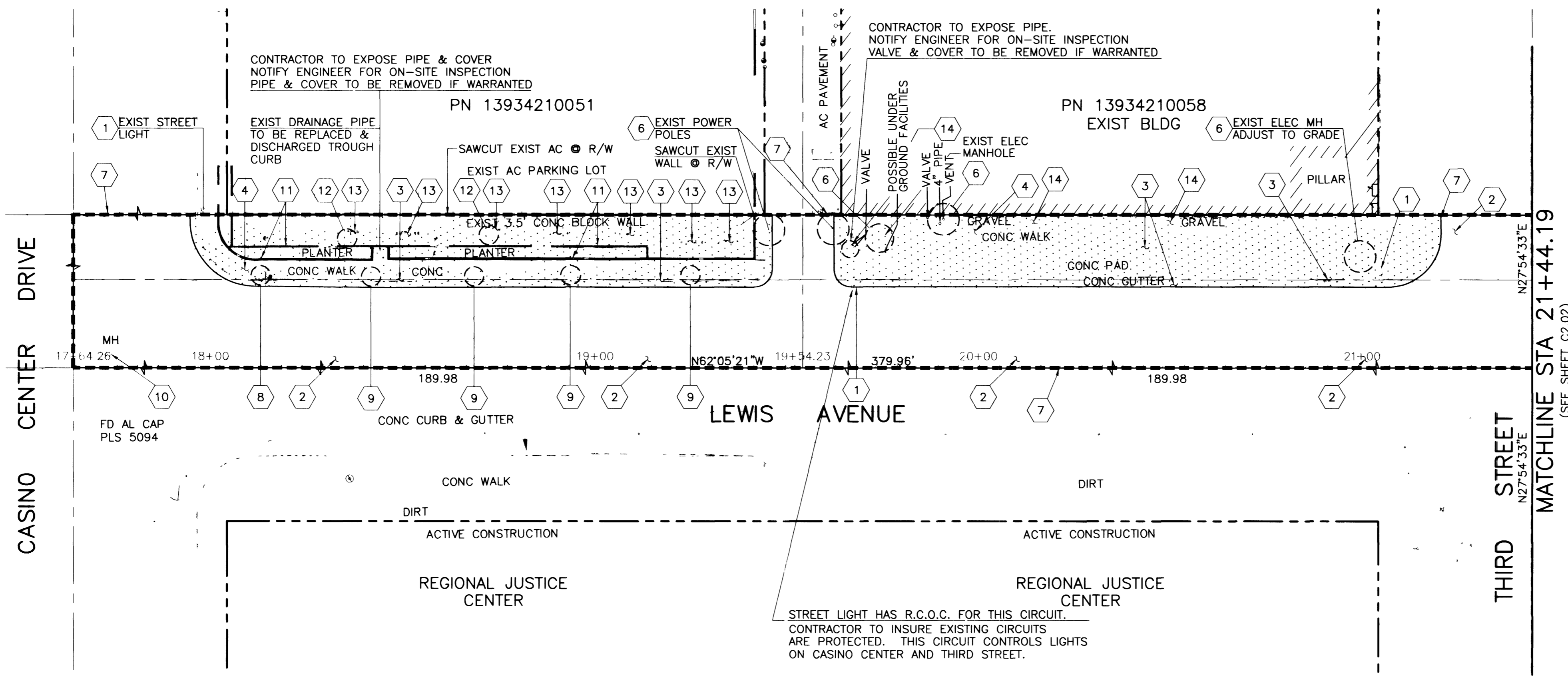
DEMOLITION KEYNOTES:

- 1 REMOVE AND RETURN EXISTING STREET LIGHT POLES TO CLV YARD AT 3104 E. BONANZA RD (CALL 229-6331 48 HOURS BEFORE REMOVING EXISTING STREET LIGHT FOUNDATIONS). ABANDON EXIST STREET LIGHT CONDUIT AND WIRE THAT IS NOT GOING TO BE USED W/NEW STREET LIGHTING SYSTEM. RETURN WIRE TO CLV.
- 2 REMOVE EXISTING ASPHALTIC CONCRETE
- 3 REMOVE EXISTING CURB, GUTTER & CONCRETE
- 4 REMOVE EXISTING SIDEWALK
- 5 REMOVE EXISTING TREES/VEGETATION WITHIN LIMITS OF WORK
- 6 EXISTING TO REMAIN (PROTECT IN PLACE AND ADJUST TO GRADE)
- 7 SAWCUT EXIST PAVEMENT OR CONCRETE TO THE LIMITS SHOWN HEREIN
- 8 REMOVE EXISTING SIGN & FOUNDATION
- 9 REMOVE EXISTING PARKING METER POST AND FOUNDATION. CONTACT THE LAS VEGAS PARKING ENFORCEMENT (229-6431) 48 HOURS PRIOR FOR METER REMOVAL.
- 10 ADJUST TO FINISHED GRADE
- 11 REMOVE EXISTING BLOCK WALL, FOUNDATION, AND CAP EXIST IRRIGATION.
- 12 NEVADA POWER POLES SHALL BE REMOVED BY FRANCHISE AGREEMENT.
- 13 REMOVE EXIST BUMPER BLOCKS & RETURN TO LAND OWNER
- 14 REMOVE AND CAP EXISTING IRRIGATION. RELOCATE EXIST VALVES (SEE LANDSCAPE PLANS)

UTILITY NOTE:

THE LOCATION OF UNDERGROUND UTILITIES SHOWN HEREON HAS BEEN DETERMINED FROM SURFACE EVIDENCE OF THEIR EXISTENCE OR FROM INFORMATION OBTAINED FROM THE UTILITY COMPANIES. THE ENGINEER ACCEPTS NO LIABILITY FOR THE EXISTENCE OR NON-EXISTENCE OF UTILITY LINES. CONTRACTORS AND OTHERS USING THIS DRAWING MUST CONFIRM THE LOCATION OF UNDERGROUND LINES OR STRUCTURES WITH THE UTILITY COMPANIES PRIOR TO COMMENCING ANY EXCAVATION OR ORDERING OF MATERIALS.

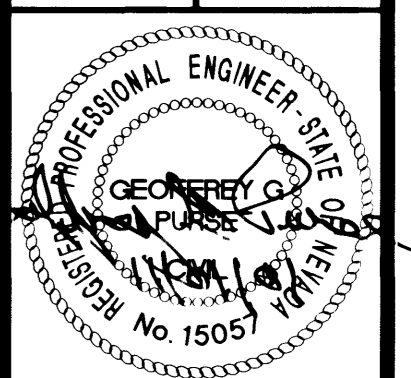
CALL 1-800-227-2600 BEFORE ANY EXCAVATION TAKES PLACE.



NO.	DATE:	DESCRIPTION	APP'D

ENGINEERS PLANNERS SURVEYORS
LANDSCAPE ARCHITECTS
POGGEMEYER
DESIGN GROUP INC.
2801 NORTH TENAYA WAY
LAS VEGAS, NEVADA 89128 (702) 255-8100

TITLE: LEWIS AVENUE CORRIDOR IMPROVEMENTS FPN STP-0170(075)
SHEET: DEMOLITION PLAN STA 17+64.26 TO STA 21+44.19



Sheet **C2.01**
5 of 46
DRAWING NO. **107-V3502**

BID NO. 02.1730.18



Call before you Dig.
1-800-227-2600