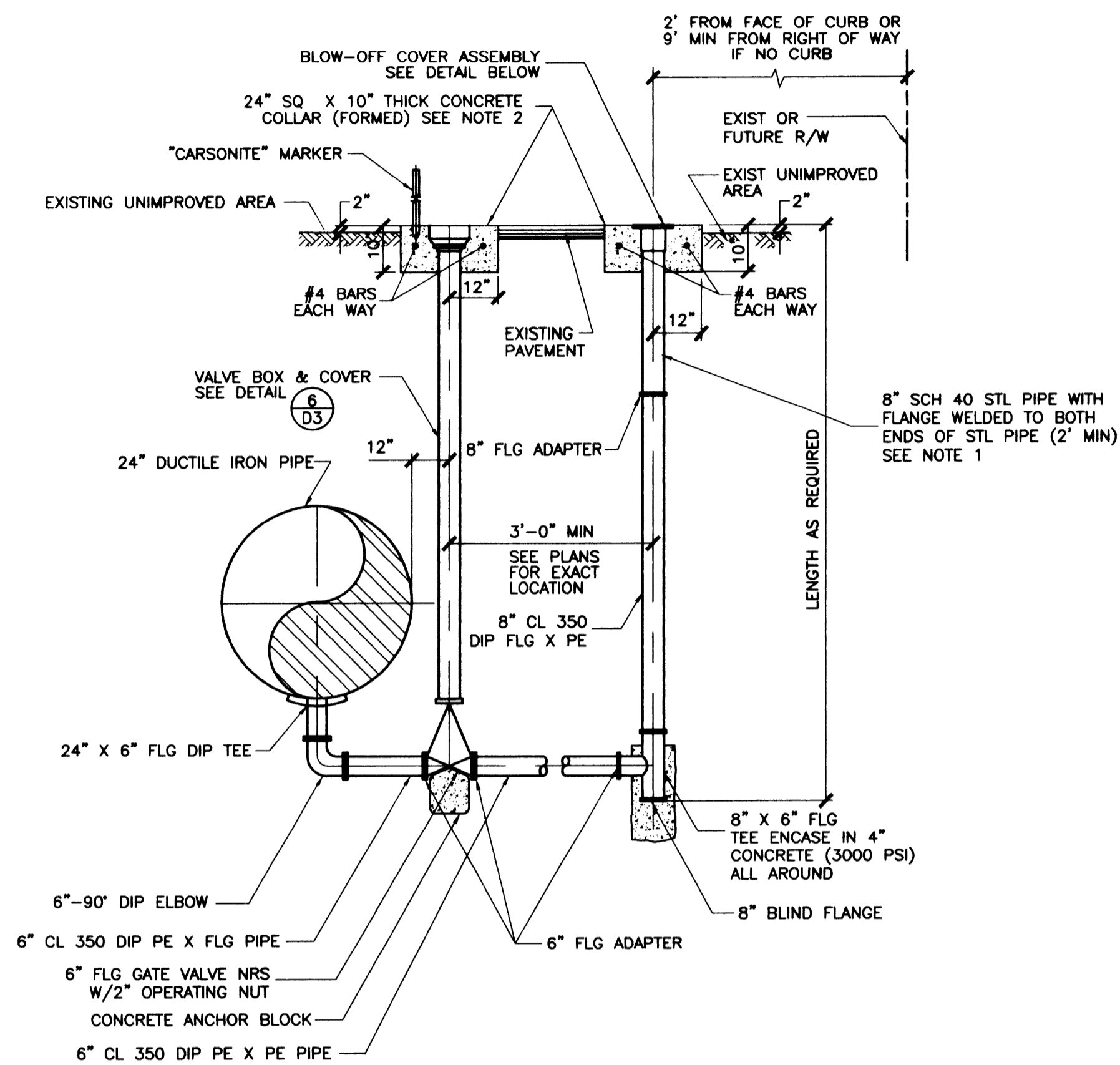
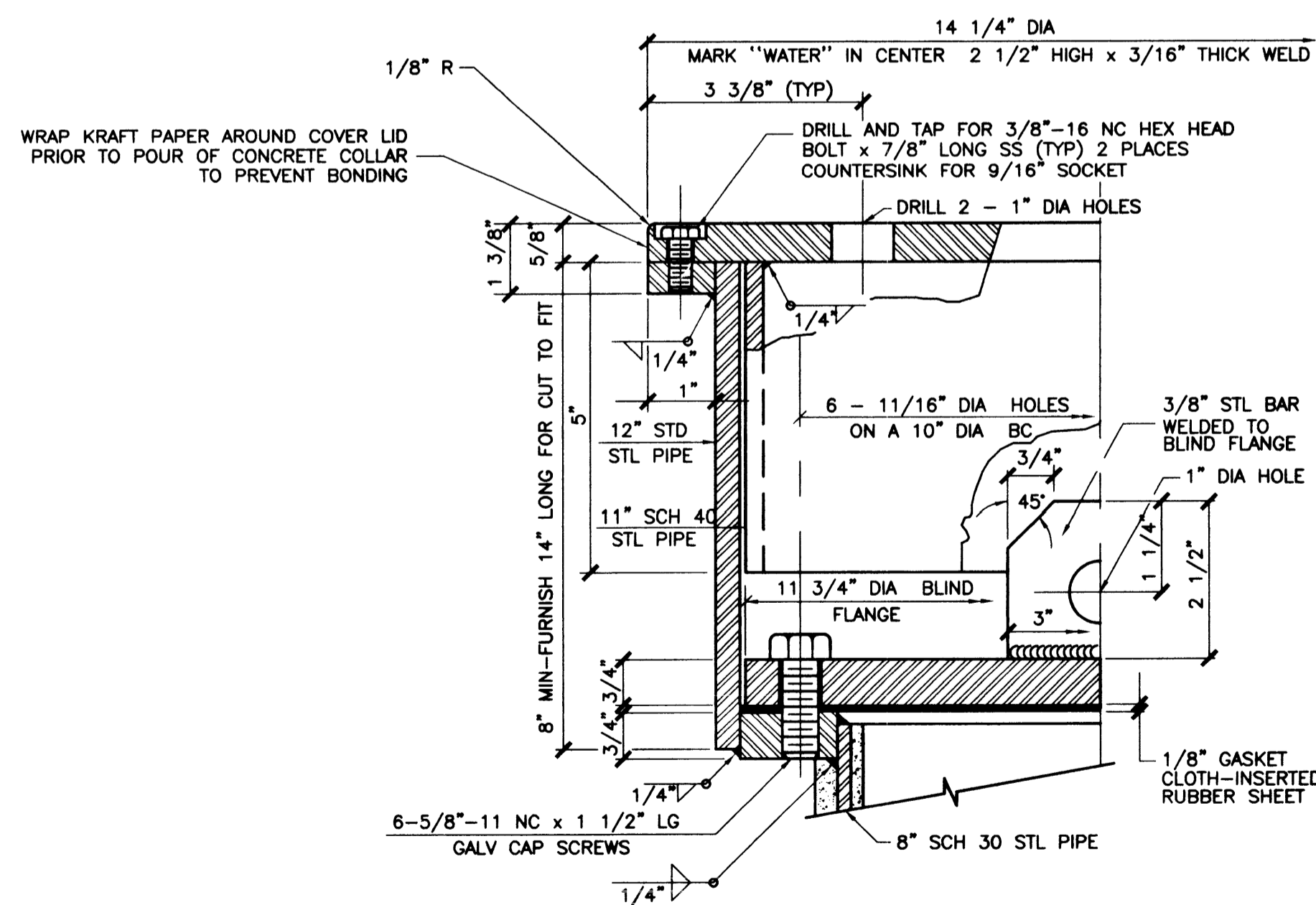


- NOTES**
1. ALL 8" STL PIPE & FITTINGS TO HAVE CEMENT MORTAR LINING & COATING
 2. CONCRETE TO BE 1/8" TO 1/4" BELOW FINAL STREET GRADE

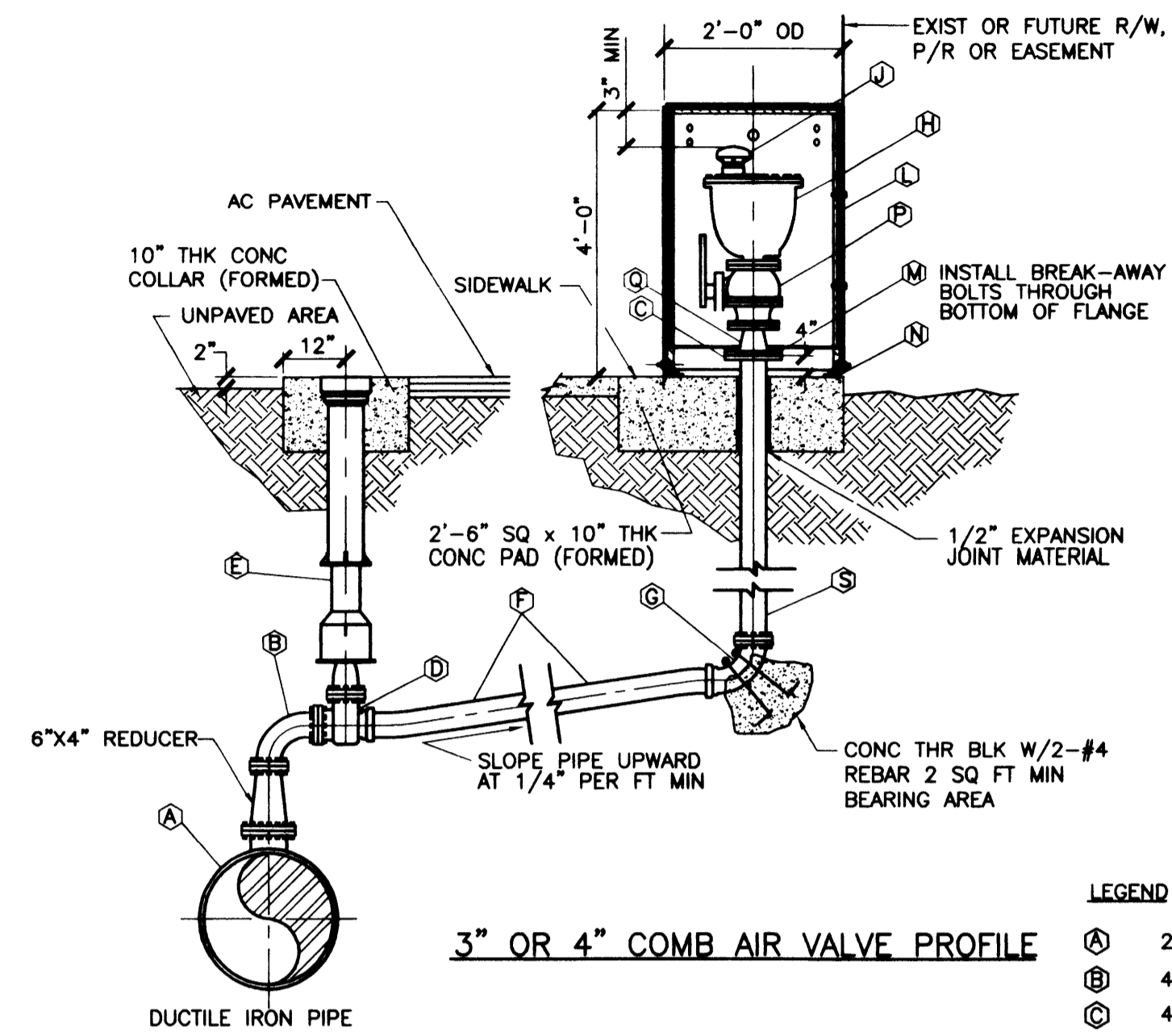


BLOW-OFF ASSEMBLY

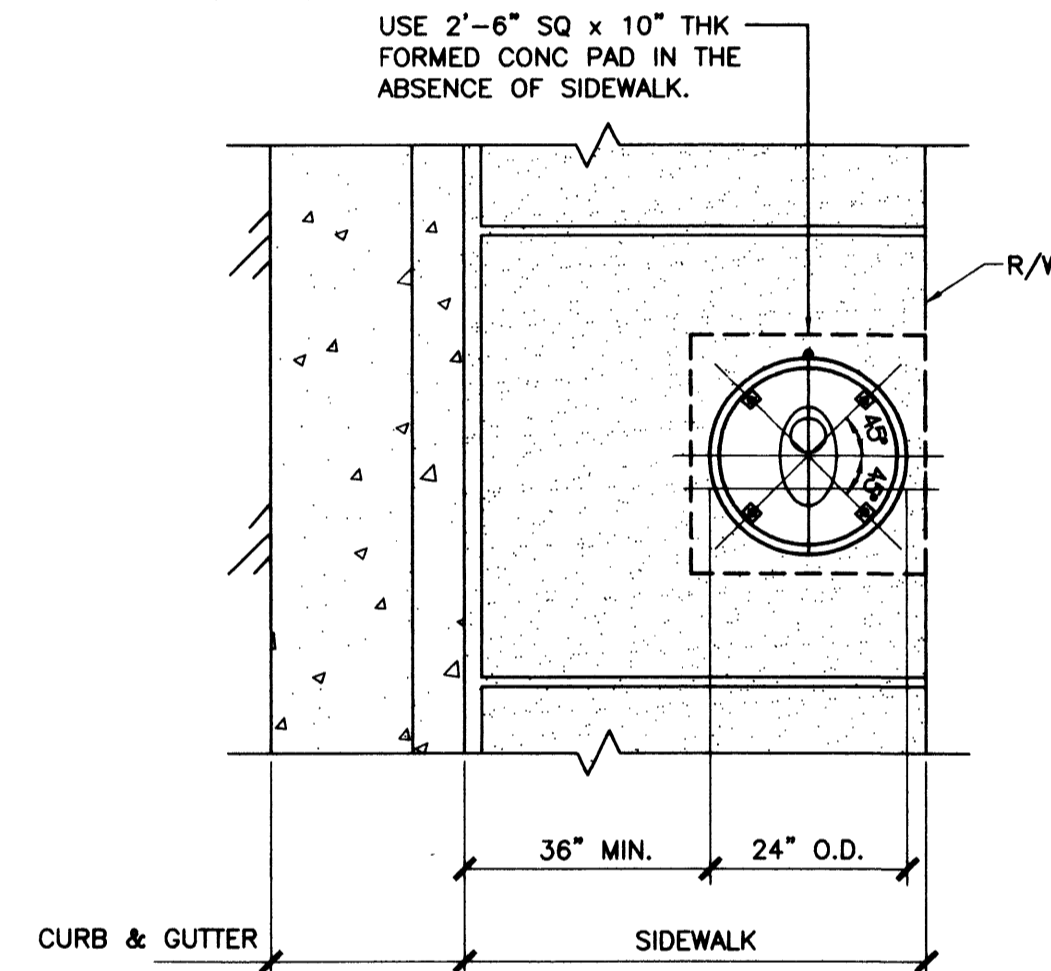


BLOW-OFF COVER

BLOW-OFF ASSEMBLY AND COVER DETAIL 1
NOT TO SCALE

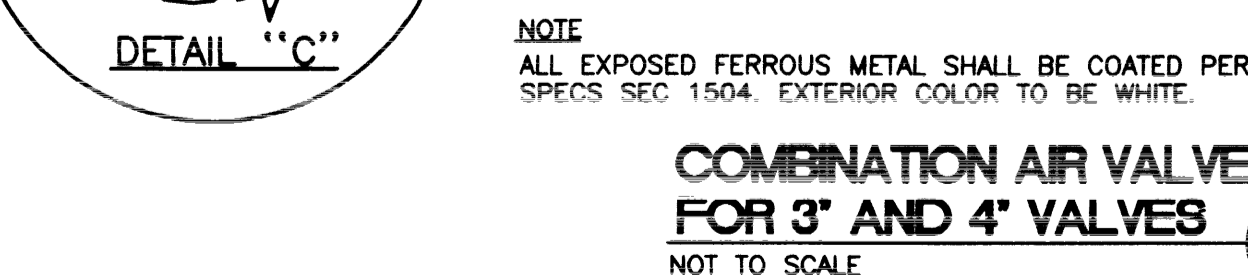
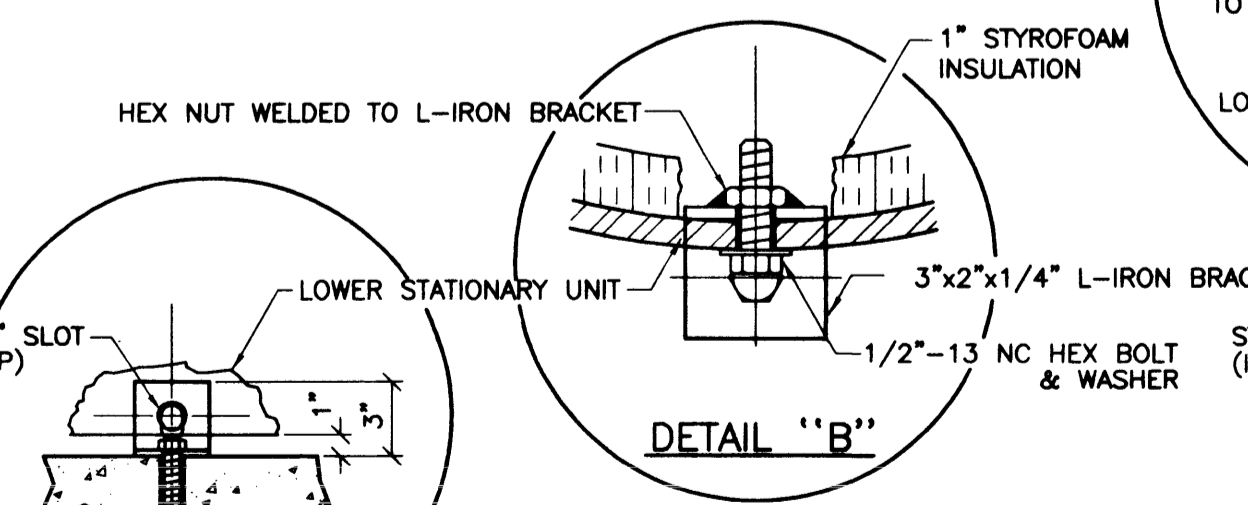
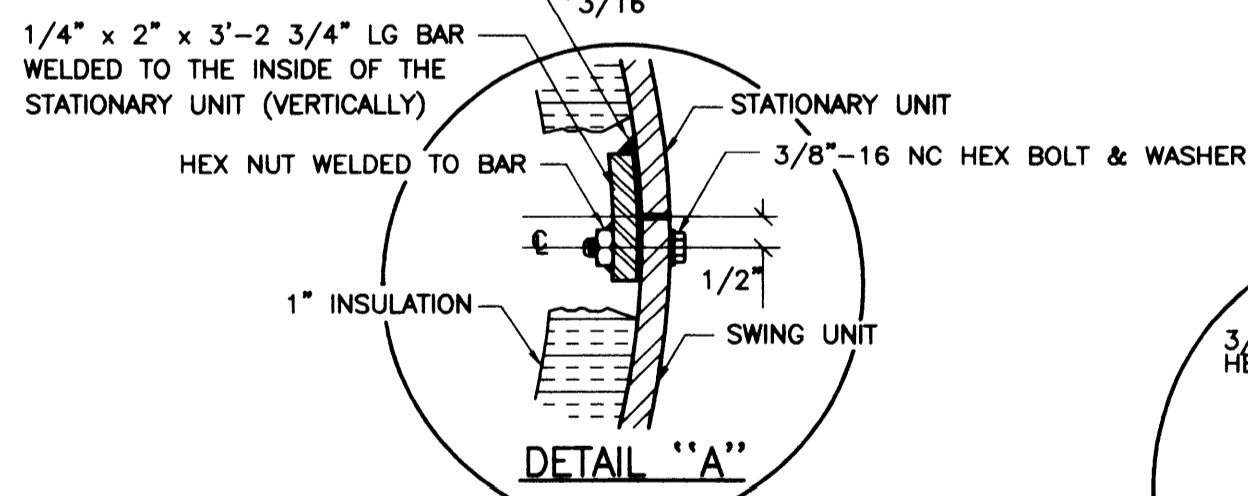


3\"/>



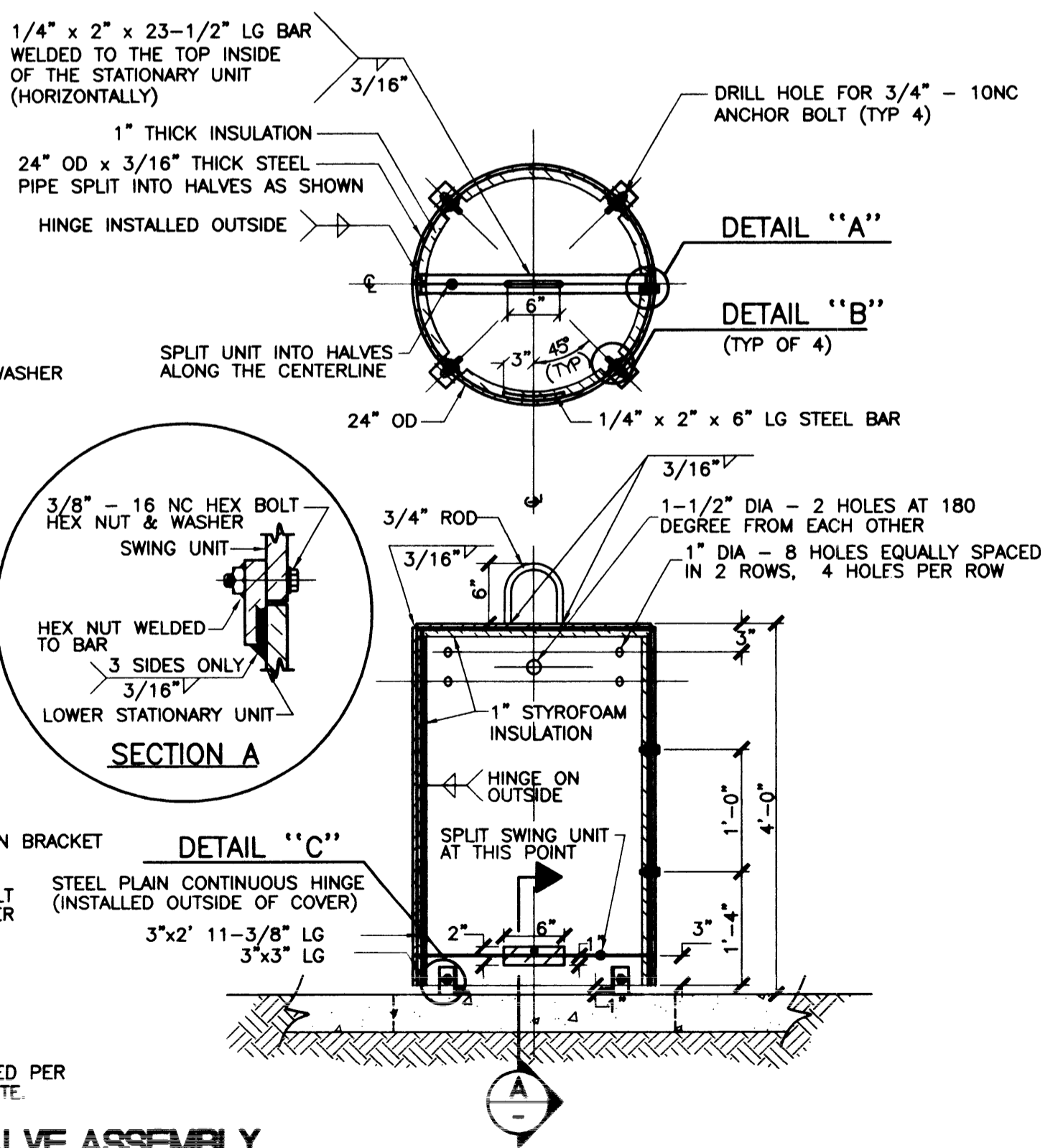
NOTES

IN IMPROVED AREAS CONTRACTOR TO REPLACE FULL SIDEWALK PANEL. IN UNIMPROVED AREAS CONTRACTOR TO CONSTRUCT FORMED 2'-6\"/>



NOTE
ALL EXPOSED FERROUS METAL SHALL BE COATED PER SPECS SEC 1504. EXTERIOR COLOR TO BE WHITE.

COMBINATION AIR VALVE ASSEMBLY FOR 3\"/>



APPROVED FOR CONSTRUCTION

DATE 7/10/10
LAS VEGAS VALLEY WATER DISTRICT

VALMATIC MODEL #204014
WATTS REGULATOR G4000

CRISPIN M#UL31.1, S#107457
WATTS REGULATOR G4000

LEGEND

- (A) 24" x 6" FLG DIP TEE
- (B) 4" - 90° FLG DUCTILE IRON BEND
- (C) 4" DUCTILE IRON FLANGE ADAPTOR
- (D) 4" FLG x PO OR FLG x MJ GATE VALVE W/2" OPERATING NUT
- (E) VALVE BOX & COVER - SEE DETAIL (B/D3)
- (F) 4" DUCTILE IRON CL350 PIPE OR 4" PVC CL150 DR18 PIPE
- (G) 4" - 90° FLG x PO OR FLG x MJ CI BEND
- (H) 3" OR 4" COMBINATION AIR VALVE, FLANGED INLET
- (I) NOT USED
- (J) 3" OR 4" MUSHROOM FOR 4" OR 3" COMBINATION AIR VALVE ASSY
- (K) NOT USED
- (L) 2'-0" OD x 3'-6" HIGH STEEL COVER
- (M) 5/8"-11NC BREAK-AWAY ZINC PLATED HEX HD BOLT, HEX NUT AND LOCKWASHER
- (N) 1/2"-13NC x 2-1/2" LG "RED HEAD" ANCHOR BOLT INSTALLED INSIDE
- (O) NOT USED
- (P) 3" OR 4" BALL VALVE - QUARTER TURN - FOR 4" OR 3" COMB AIR VALVE ASSY
- (Q) 4" x 3" FLG DUCTILE IRON REDUCER - FOR 3" COMB AIR VALVE ASSY
- (R) NOT USED
- (S) 4" DUCTILE IRON CL350 PIPE

NOTE SEE SPECIFICATIONS FOR ALL APPROVED PRODUCTS

Avoid cutting underground utility lines. It's costly.
Call before you Dig
1-800-227-2600
MICROBROW SERVICE (MS)

Avoid overhead power line contact.
Call before you Overhead
1-702-593-6111
NEVADA POWER ENVIRONMENT SAFETY SERVICES DEPARTMENT

24925

NO.	DATE	BY	REV

THE FOCUS GROUP/
STANPARK HOMES

2727 SOUTH RAINBOW BOULEVARD, LAS VEGAS, NEVADA 89146-5148
PH: (702) 973-7550 FAX (702) 362-2597

novada CONSULTING ENGINEERS • PLANNERS • LAND SURVEYORS

SHEET 24" WATER MAIN PHASE I DETAILS LAS VEGAS, NEVADA

LONE MOUNTAIN WEST INFRASTRUCTURE PLANS

DRAWN BY: AFY	MAR 2000	DESIGNED BY: AFY	MAR 2000	CHECKED BY: CRG	MAR 2000	PROJECT NO: 5845-1	SCALE: NA	HORIZ. VERT.
---------------	----------	------------------	----------	-----------------	----------	--------------------	-----------	--------------

SEAL
PROFESSIONAL ENGINEER
CHRISTOPHER J. ...
CIVIL
No. 73856

SHEET D2 OF 10 SHEETS
DRAWING NO. 07-V3308