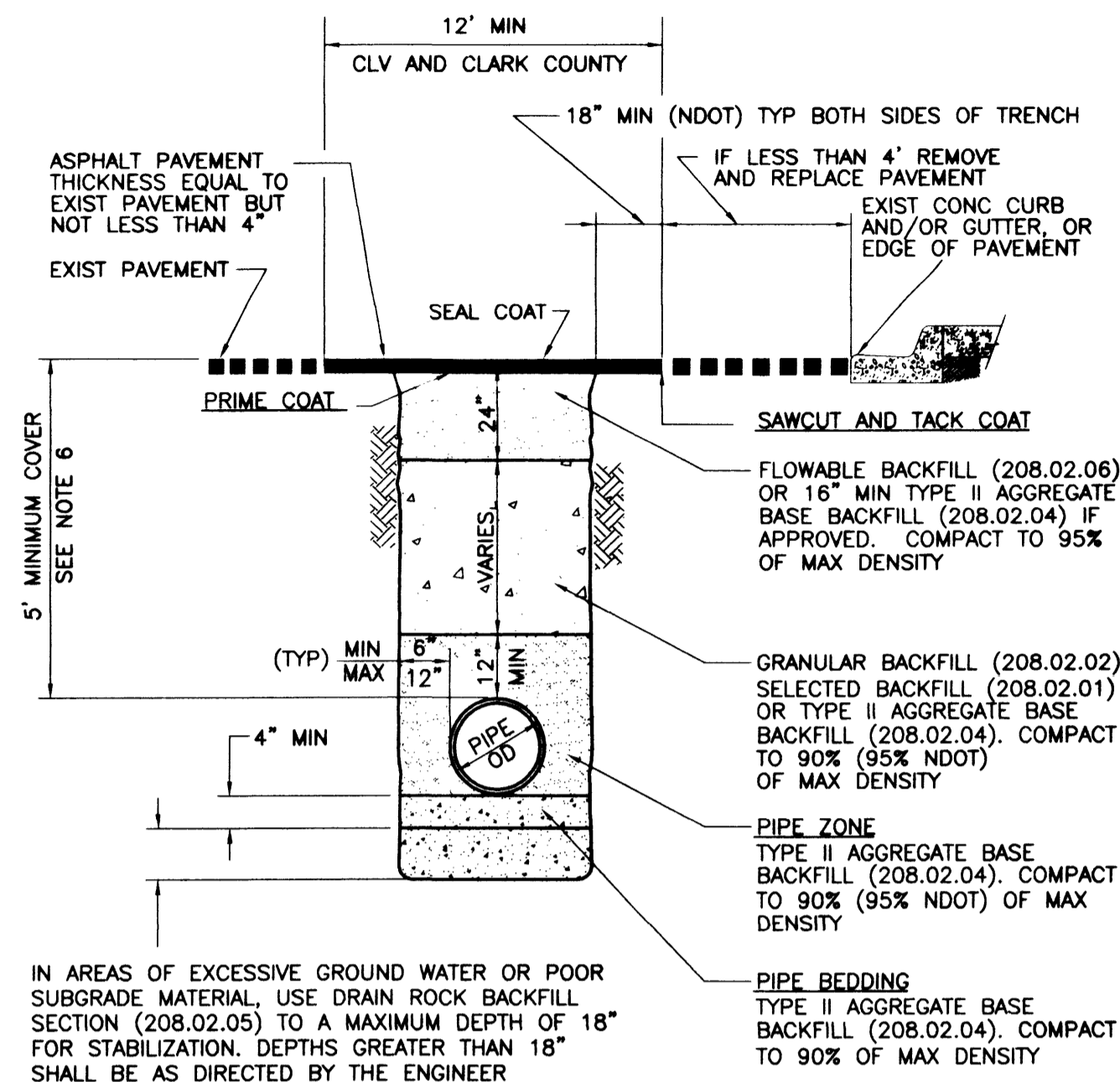


**TRENCH NOTES FOR PAVED AND UNPAVED AREAS**

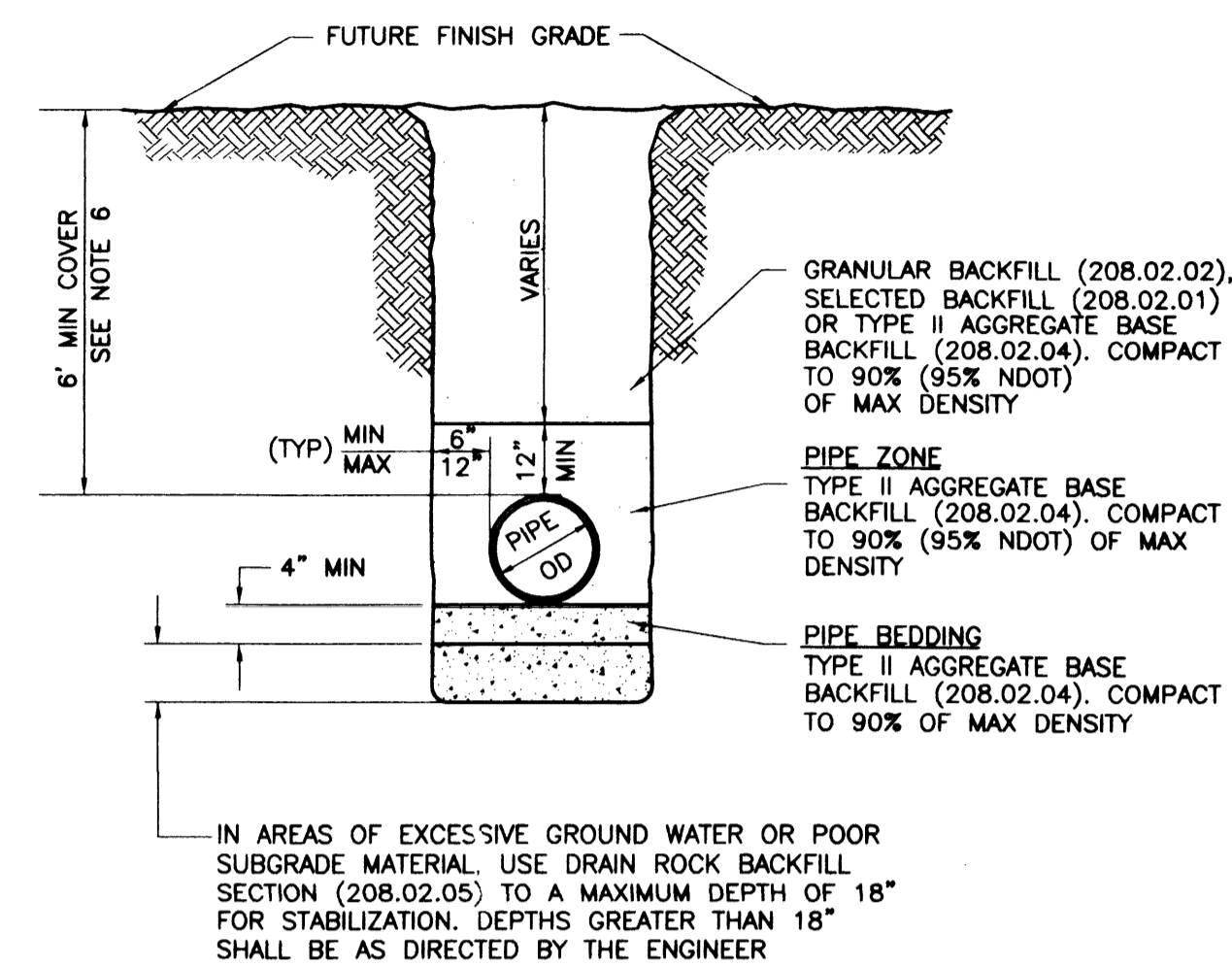
- ACCEPTABLE METHODS OF COMPACTION
  - BEDDING AND PIPE ZONE AREAS**  
FLOODING AND JETTING OR MECHANICAL COMPACTION. (NEVADA DEPARTMENT OF TRANSPORTATION RIGHT OF WAY MECHANICAL COMPACTION ONLY)
  - ABOVE PIPE ZONE**  
FLOODING AND JETTING OR MECHANICAL COMPACTION. MECHANICAL COMPACTION ONLY FOR A MINIMUM OF TOP 16" IN PAVED AREAS. (NEVADA DEPARTMENT OF TRANSPORTATION RIGHT OF WAY MECHANICAL COMPACTION ONLY)
- TRENCH EXCAVATION SHALL COMPLY WITH THE CURRENT REGULATIONS AS DETERMINED BY THE NEVADA OCCUPATIONAL SAFETY AND HEALTH ADMINISTRATION.
- REFERENCE: UNIFORM STANDARD SPECIFICATIONS FOR PUBLIC WORKS CONSTRUCTION OFF-SITE IMPROVEMENTS CLARK COUNTY AREA NEVADA, LATEST EDITION OR IMPROVEMENT STANDARDS, DEPARTMENT OF PUBLIC WORKS, CLARK COUNTY NEVADA, LATEST EDITION, AS APPLICABLE.
- FOR PIPE LOCATOR RIBBON AND TYPICAL INSTALLATION, SEE DETAIL "3" THIS SHEET.
- REFER TO THE UNIFORM DESIGN STANDARDS FOR WATER DISTRIBUTION SYSTEMS, TABLE E, "BACKFILL MATERIALS" FOR AGGREGATE TYPES AND SIZES.
- THE MINIMUM COVER IS REFERENCED TO FUTURE FINISH GRADES UNLESS OTHERWISE SHOWN ON PROFILE DRAWINGS.



**PAVED AREAS (STREET R/W GREATER THAN 60') TRENCH SECTION BACKFILL SPECIFICATION**

NOT TO SCALE

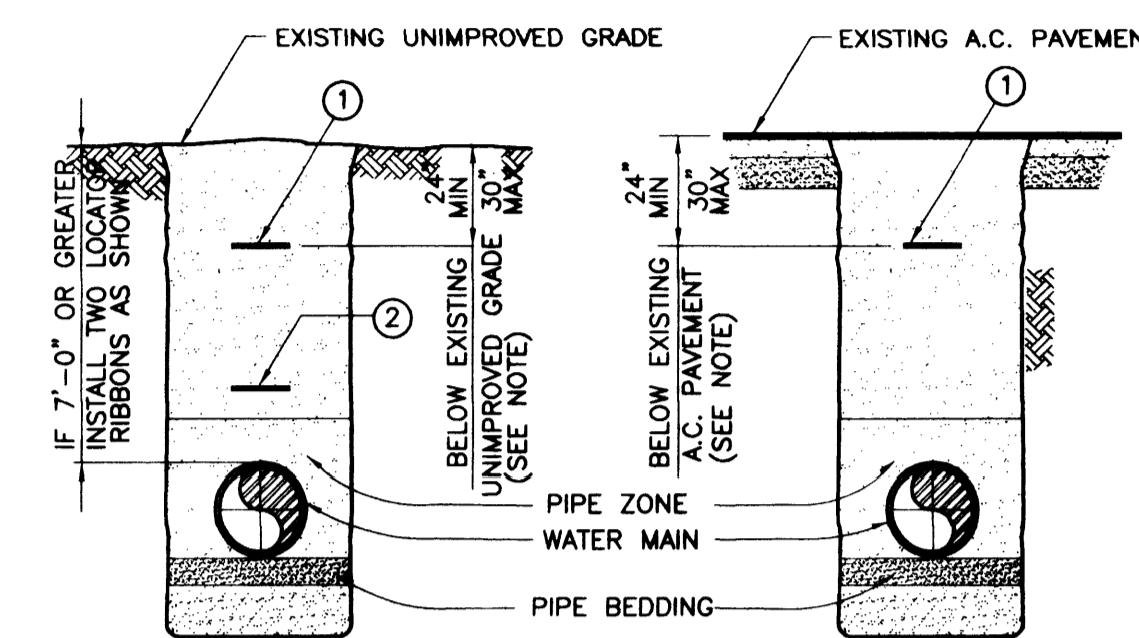
1



**UNPAVED AREAS TRENCH SECTION BACKFILL SPECIFICATION**

NOT TO SCALE

2



- MAGNETIC PIPE LOCATOR RIBBON - 3" WIDTH OR WIRE
- PIPE LOCATOR RIBBON - 6" WIDTH

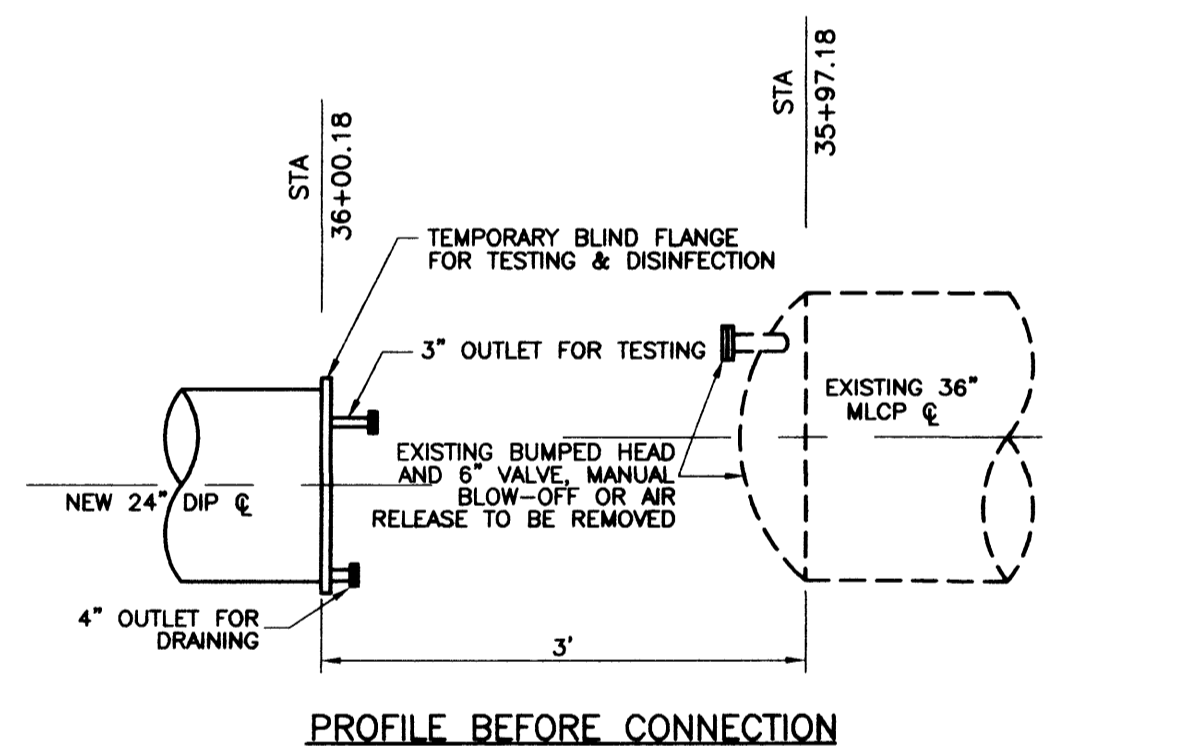
NOTE

1 CENTER PIPE LOCATOR RIBBON IN TRENCH AND PLACE OVER ENTIRE LENGTH OF ALL TYPES, SIZES AND LOCATIONS OF WATER MAINS

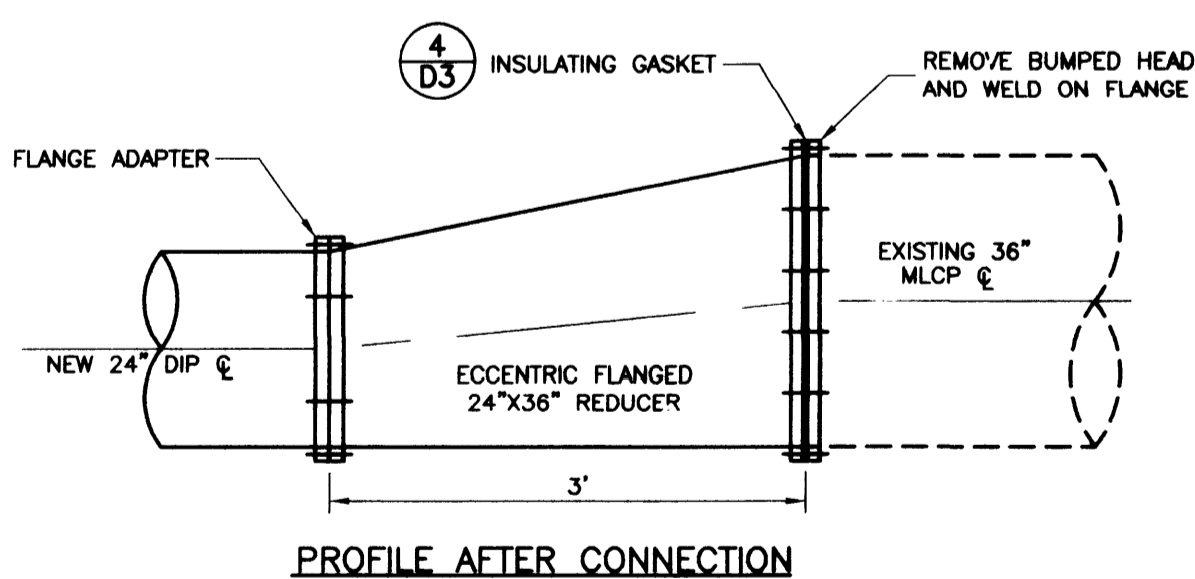
**PIPE LOCATOR RIBBON TYPICAL INSTALLATION**

NOT TO SCALE

3



**PROFILE BEFORE CONNECTION**



**PROFILE AFTER CONNECTION**

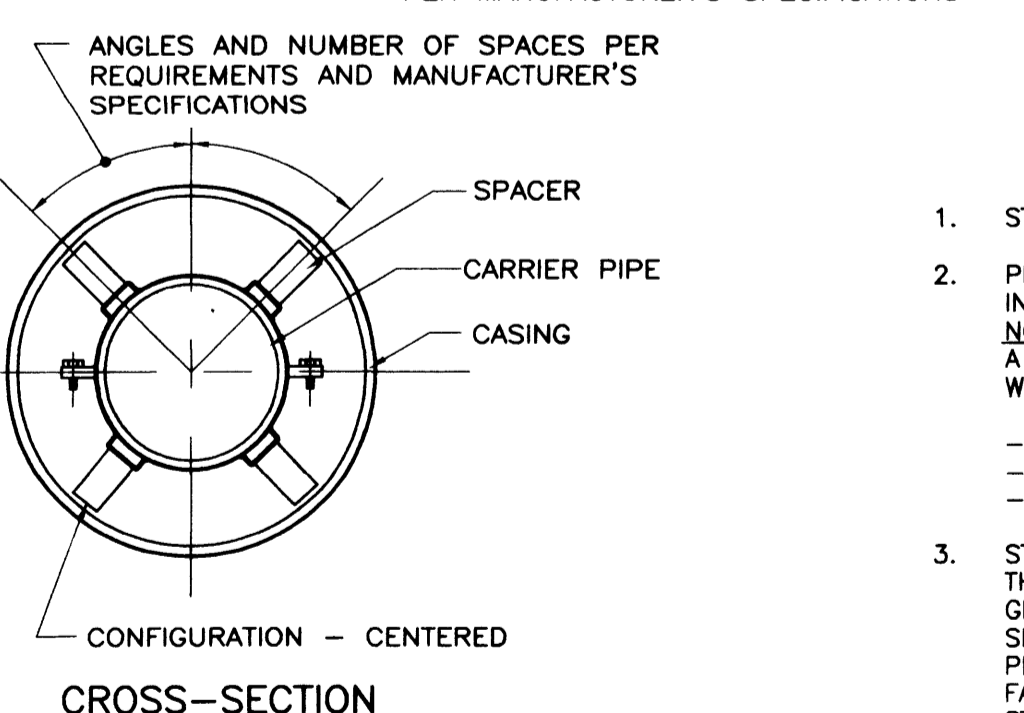
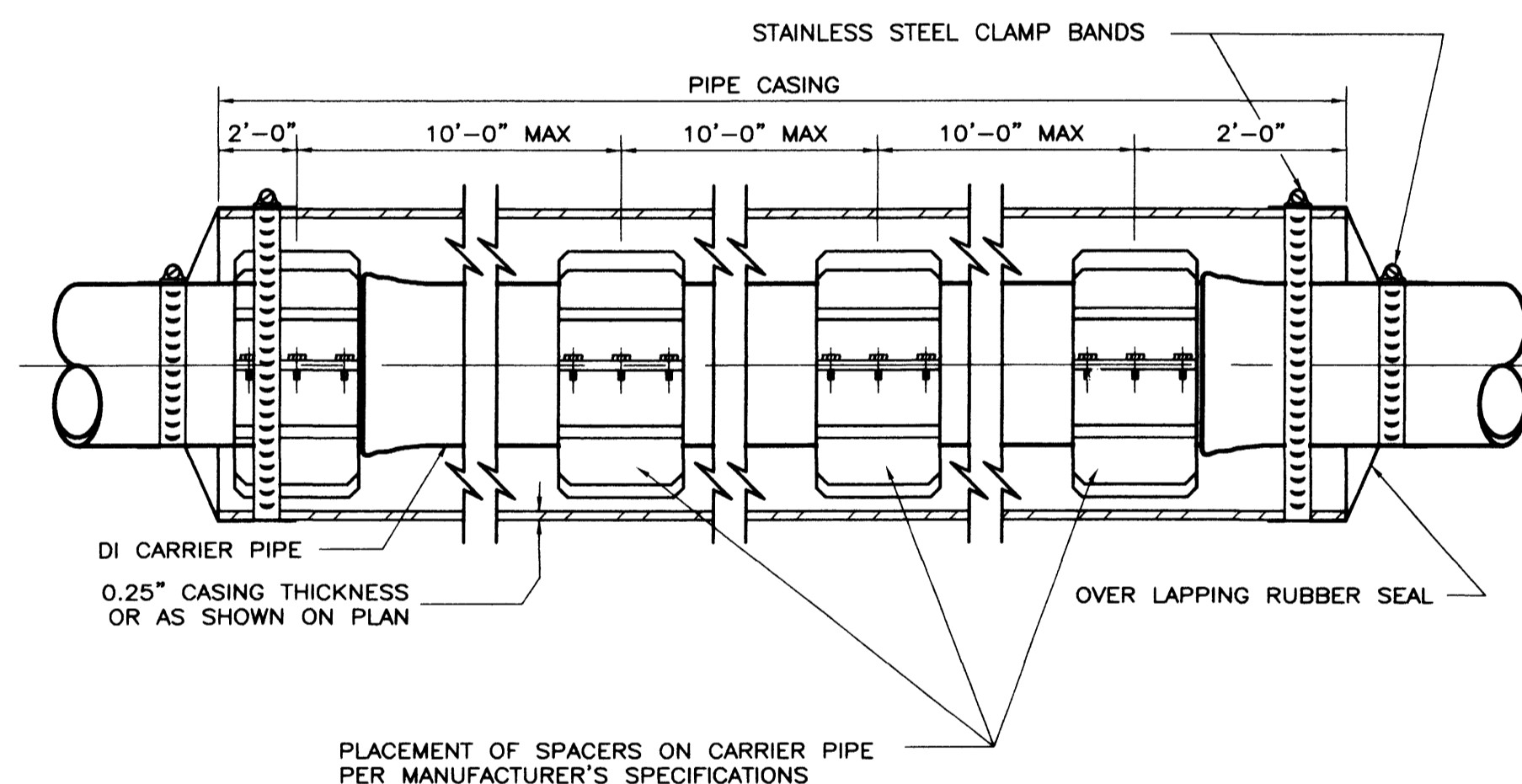
NOTE

EXCEPT AS OTHERWISE SPECIFIED OR SHOWN ON THE PLANS, ALL FLANGES TO BE INSTALLED ON PIPE OR FITTINGS SHALL BE FACED AND DRILLED IN ACCORDANCE WITH 150 LB. ASA DIMENSIONS, OR IN LIEU THEREOF, SHALL BE IN ACCORDANCE WITH THE "STANDARD FOR STEEL PIPE FLANGES FOR WATERWORKS SERVICE" (AWWA C207, CLASS D OR CLASS E AS APPLICABLE). ALL FLANGES SHALL BE FURNISHED WITH FLAT FACES. ALL PIPE FLANGES SHALL BE ATTACHED WITH BOLD HOLES STRADDLING THE VERTICAL AXIS OF THE PIPE UNLESS OTHERWISE SHOWN ON THE PLANS. ATTACHMENT OF THE FLANGES TO THE PIPE SHALL CONFORM TO THE APPLICABLE REQUIREMENTS OF THE "STANDARD FOR STEEL PIPE FLANGES FOR WATERWORKS SERVICE" (AWWA C207).

**CONNECTION OF NEW PIPE TO EXISTING PIPE**

NOT TO SCALE

4



**CROSS-SECTION**

DI CARRIER PIPE	
8" SPACER WIDTH	
PIPE SIZE	CASING ID
24"	42"

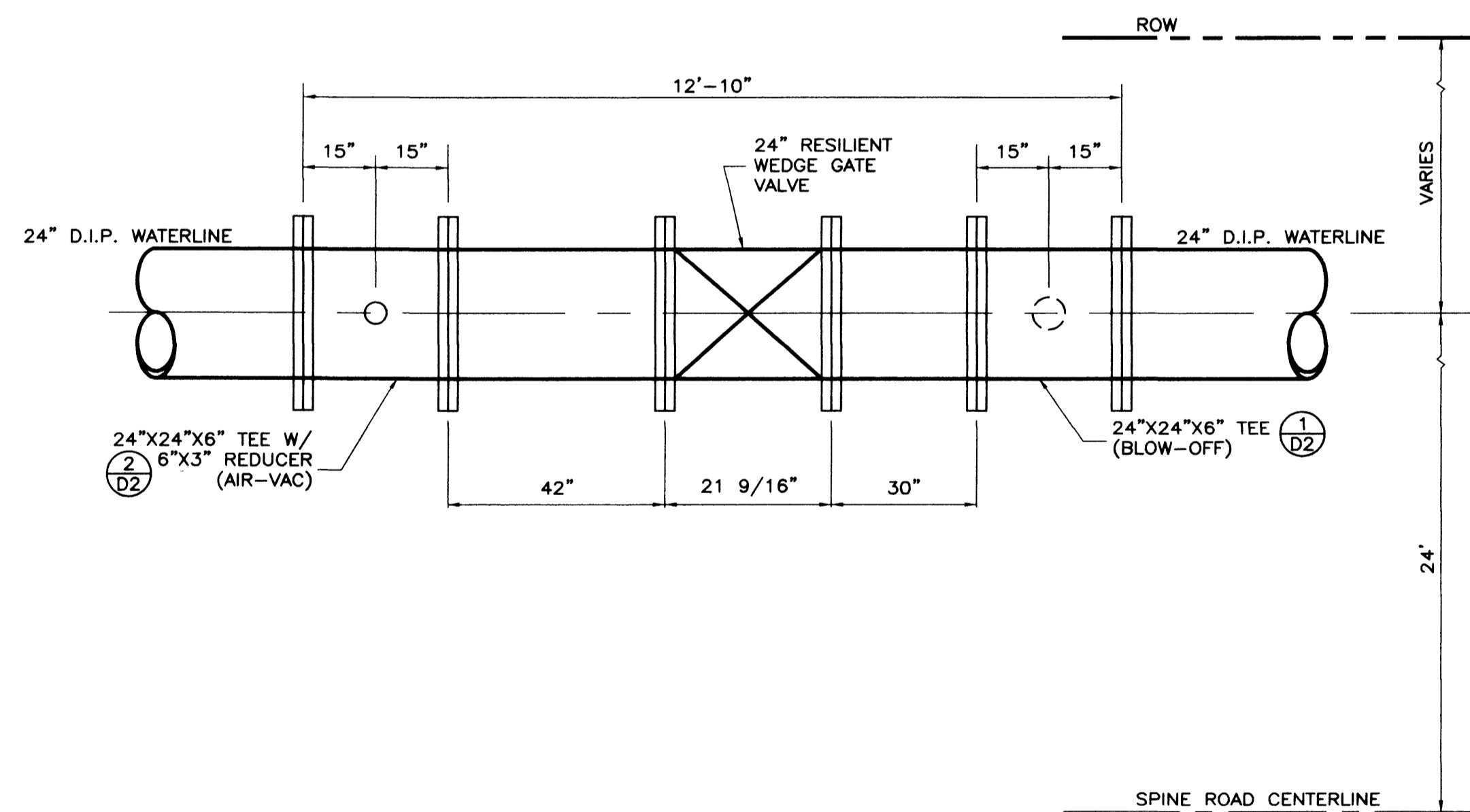
**CASING ASSEMBLY DETAIL**

NOT TO SCALE

5

**NOTES**

- STEEL PIPE CASING SYMMETRICAL ABOUT WATER MAIN CENTERLINE
- PRE-APPROVED CASING SPACERS AND PRE-APPROVED END SEALS INSTALLED PER MANUFACTURER'S SPECIFICATIONS. (REDWOOD SKIDS NOT ALLOWED, UDACS SECTION 3.26 NOT APPLICABLE). USE A "CENTERED" CONFIGURATION AND PROVIDE THE MANUFACTURER WITH THE FOLLOWING:  
-PIPE OUTSIDE DIAMETER  
-CASING INSIDE DIAMETER  
-CASING LENGTH
- STEEL PIPE CASING SHALL BE FABRICATED FROM A MINIMUM OF 1/4" THICK STEEL PLATES, CONFORMING TO THE REQUIREMENTS OF ASTM A283, GRADE B, C OR D. ALL JOINTS SHALL BE WELDED. INTERIOR JOINTS SHALL BE GROUND TO A SMOOTH FINISH. ALL WELDING SHALL BE PERFORMED IN ACCORDANCE WITH AWWA C201, "AWWA STANDARD FOR FABRICATED ELECTRICALLY WELDED STEEL WATER PIPE". COATINGS FOR STEEL CASING ARE NOT REQUIRED.
- PIPE CASING SHALL BE LAID TRUE TO LINE AND GRADE WITH NO BENDS OR CHANGES IN GRADE FOR THE FULL LENGTH OF THE CASING.
- THE PIPE SHALL BE SUPPORTED AT EACH END JOINT WITH SPACERS. AFTER INSTALLATION OF THE PIPE, THE CASING SHALL BE SEALED AT BOTH ENDS WITH CASING END SEALS. DUCTILE IRON PIPE JOINTS INSIDE CASINGS ARE TO BE RESTRAINED.



24" GATE VALVE	
LOCATIONS	
41+85.00	51+55.00

**24' GATE VALVE (DIRECT BURY)**  
(AMERICAN FLOW CONTROL 24" RESILIENT SEATED)

NOT TO SCALE

6

APPROVED FOR CONSTRUCTION

LAB VEGAS VALLEY WATER DISTRICT  
DATE 7/18/00

Call before you Dig  
1-800-227-2600  
UNDERGROUND SERVICE (USA)

Call before you Overhead  
1-702-593-6111  
NEVADA POWER OVERHEAD SAFETY SERVICES DEPARTMENT

THE FOCUS GROUP / STANPARK HOMES

2727 SOUTH RAINBOW BOULEVARD LAS VEGAS, NEVADA 89146-5148  
PH. (702) 973-7550 FAX (702) 362-2597

mtm nevada CONSULTING ENGINEERS • PLANNERS • LAND SURVEYORS

24" WATER MAIN, PHASE I DETAILS LAS VEGAS, NEVADA

LONE MOUNTAIN WEST INFRASTRUCTURE PLANS

SHEET 7 OF 10 SHEETS  
DRAWING NO. 107-V3308

DESIGNED BY: [Signature]  
CHECKED BY: [Signature]  
PROJECT NO: 5545-1

SCALE: NA HORIZ. VERT.

DATE: 7/18/00