

BASIS OF BEARINGS
 N 00°00'00" E BEING THE CENTERLINE OF VALLEY VIEW BOULEVARD BETWEEN CHARLESTON & ALTA.

BENCHMARK
 2LV1 31E6 BEING A RIVET & PLATE IN TOP OF CURB, NW RETURN ALTA DRIVE AND VALLEY VIEW BLVD.
 ELEVATION = 2140.46. CITY OF LAS VEGAS BM, NORTH AMERICAN DATUM OF 1988.

- GRADING NOTES**
- SLOPES 4:1 OR STEEPER AND FINE-GRAINED MATERIALS THAT HAVE BEEN DISTURBED (SANDY AND SILTY MATERIALS) SHOULD BE PROTECTED WITH BURLAP OR OTHER EROSION CONTROL FABRIC/MATERIAL, UNLESS OTHERWISE SPECIFIED BY LANDSCAPE DRAWINGS AND SPECIFICATIONS OR THE SOILS REPORT.
 - CONTRACTOR SHALL DETERMINE HIS OWN FOOTING OR BASEMENT EXCAVATION QUANTITIES, EVEN THOUGH SHOWN ON ROUGH GRADING PLANS. ADDITIONALLY, STRUCTURE BACKFILL COSTS SHOULD BE INCLUDED IN THE COST OF THE STRUCTURE, UNLESS OTHERWISE SPECIFIED IN THE CONTRACT DOCUMENTS.
 - CONTRACTOR SHALL NOTIFY LOCHSA ENGINEERING WITHIN 24 HOURS OF OMISSIONS AND ERRORS DISCOVERED ON PLANS. LOCHSA ENGINEERING WILL NOT BE RESPONSIBLE FOR ANY "CORRECTIVE" WORK DONE BY OTHERS.
 - CONTRACTOR TO ENSURE POSITIVE DRAINAGE. NO PONDING ALLOWED.
 - CONTRACTOR TO FOLLOW RECOMMENDATIONS AS OUTLINED IN THE PROJECT GEOTECHNICAL REPORT, INCLUDING BUT NOT LIMITED TO EXCAVATION, GRADING AND COMPACTION. REFER TO THE REPORT PREPARED BY TERRACON, PROJECT NO. 64988150, DATED JUNE 11, 1998.

DATE	BY	REVISION

PURVIS ARCHITECTS
 2880 MEADE AVENUE
 LAS VEGAS, NV 89102
 (702) 878-8690

LOCHSA ENGINEERING
 5928 SPRING Mtn. RD. SUITE 308
 LAS VEGAS, NV 89146
 (702) 365-9312 FAX (702) 365-9317

GRADING PLAN

LAS VEGAS VALLEY WATER DISTRICT

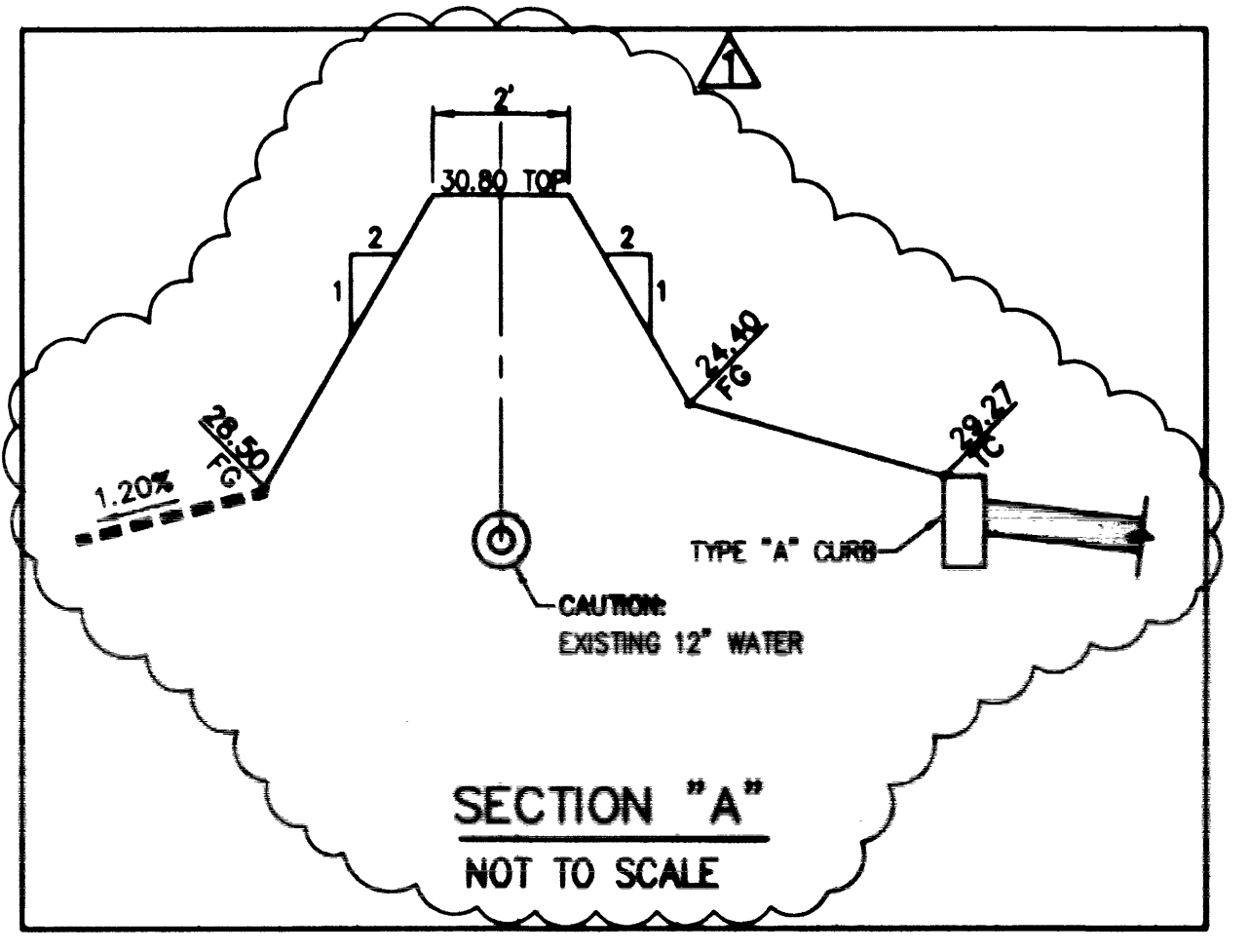
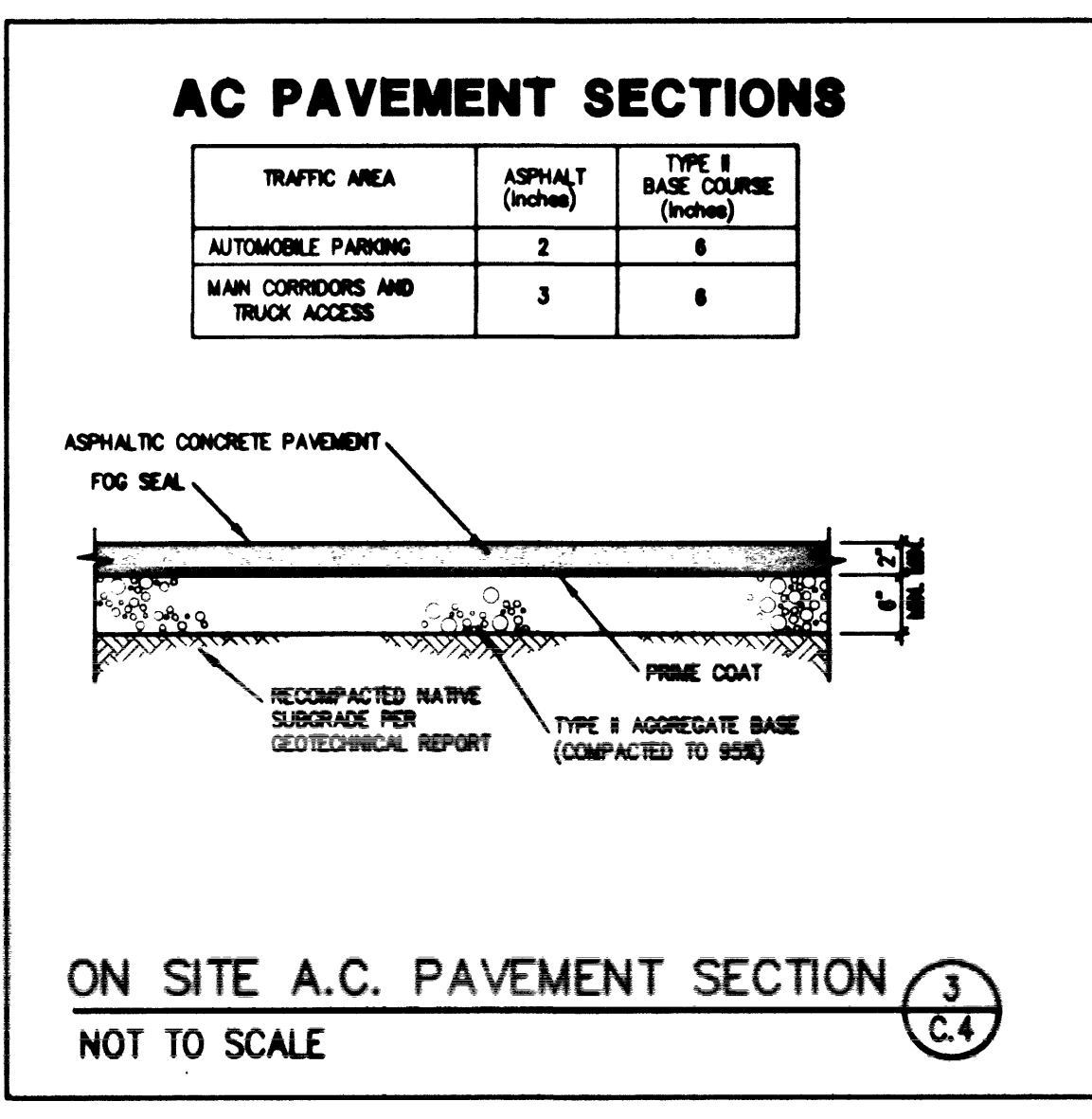
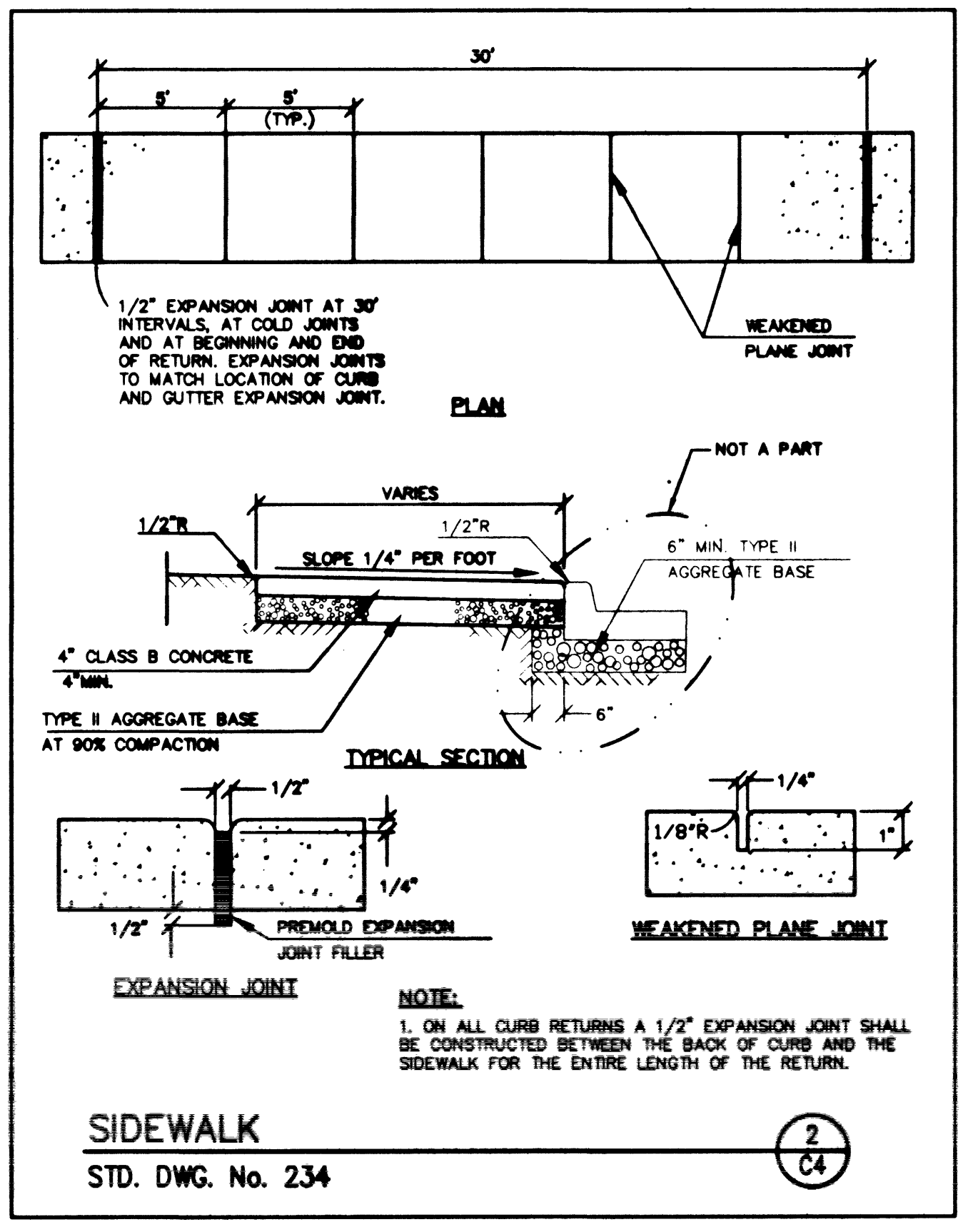
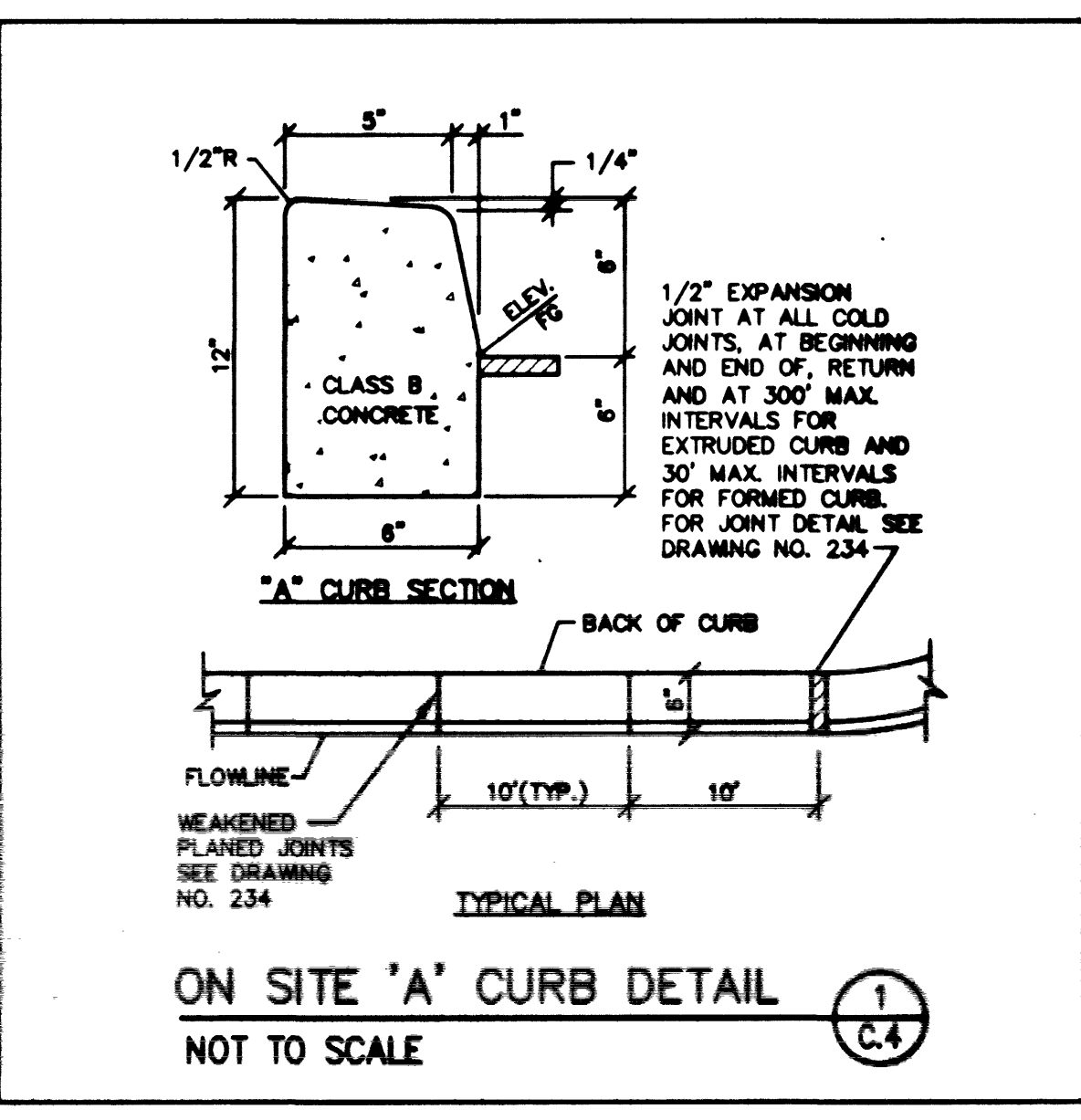
NATURAL GAS FUELING FACILITY

DRAWN BY: J.J.M.
 DESIGNED BY: E.Z.
 CHECKED BY: E.Z.
 PROJECT NO: 6208

DATE: 6/29/00
 DATE: 6/29/00
 DATE: 6/29/00

SCALE: 1" = 30' HOR.

SHEET 1 OF 2 SHEETS
 DRAWING NO. 107-V3305



- CONSTRUCTION NOTES:**
- EXISTING BOLLARD TO REMAIN.
 - EXISTING BOLLARD TO BE REMOVED.
 - SAW CUT & MATCH EXISTING GRADE.
 - CONSTRUCT TYPE "A" CURB PER DETAIL (C.4).
 - CONSTRUCT CONCRETE SIDEWALK PER DETAIL (C.4).
 - CONSTRUCT A.C. PAVEMENT PER DETAIL (C.4).
 - CONSTRUCT CONCRETE SLAB. SEE ARCH. PLANS (SHEET A1 FOR DETAILS).
 - CONSTRUCT CONCRETE ISLAND. SEE ARCH. PLANS (SHEET A1 FOR DETAILS).
 - PROPOSED NATURAL GAS LINES.
- NOTE:**
 ALL DIMENSIONS ARE MEASURED TO THE BACK OF CURB UNLESS OTHERWISE NOTED.

AND OTHER UNDERGROUND UTILITIES. IT'S BEST TO CALL BEFORE YOU DIG!
 1-800-227-2600

AND OTHER POWER LINE OWNERS. CALL BEFORE YOU OVERHEAD!
 1-702-593-0111

SEAL

LOCHSA ENGINEERING STATE OF NEVADA
 No. 11290
 6/29/00