

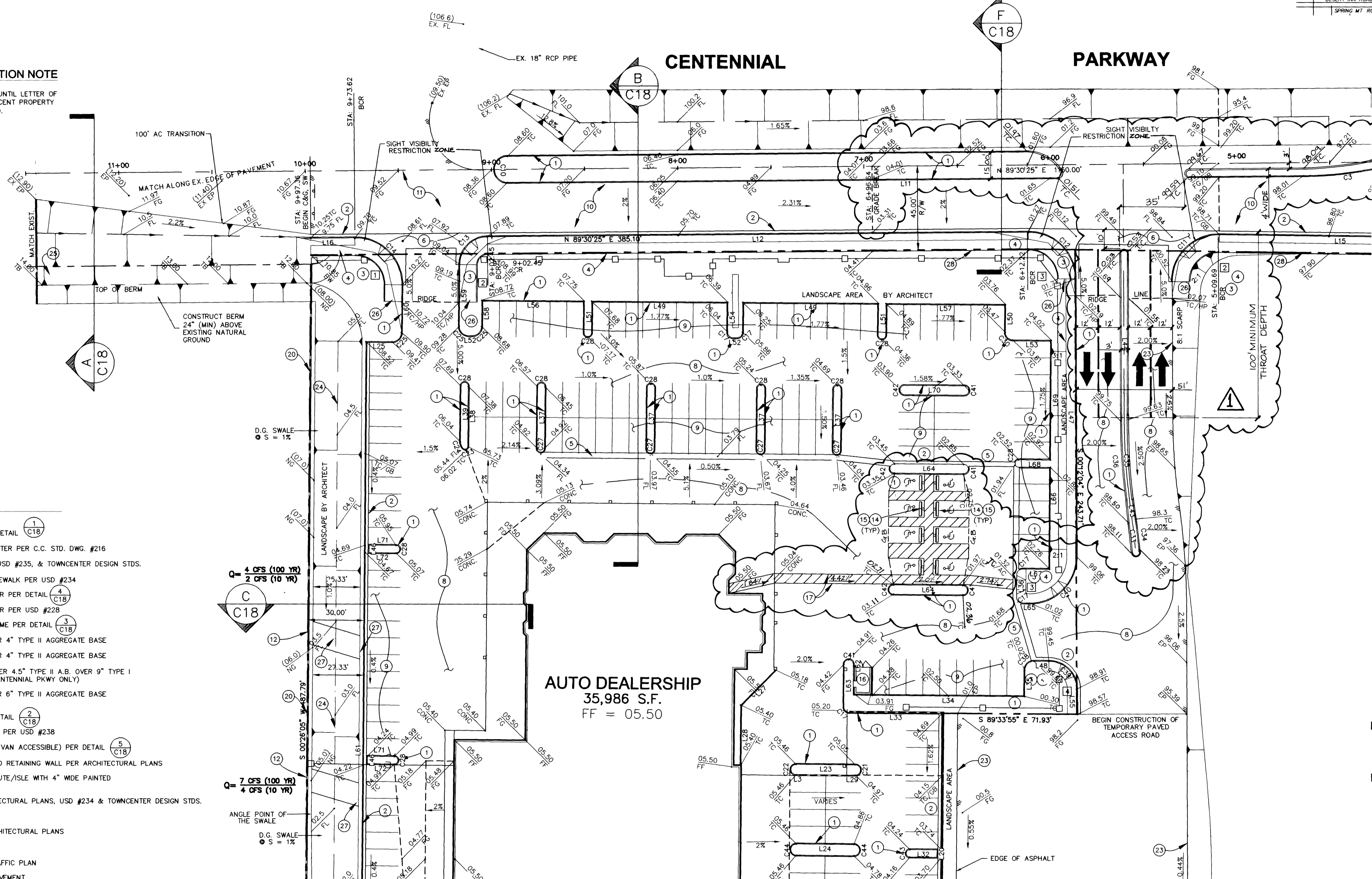
STANDARD GREY BROOM FINISH CONCRETE WALK WITH 2'-6" SCORING PER WEAKENED PLANE JOINT DETAIL - THIS SHEET.

WEAKENED PLANE JOINT

SIDEWALK SCORING PATTERN

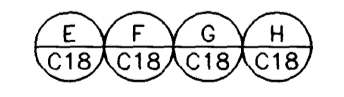
BERM CONSTRUCTION NOTE

DO NOT CONSTRUCT BERM UNTIL LETTER OF AUTHORIZATION FROM ADJACENT PROPERTY OWNER HAS BEEN OBTAINED.

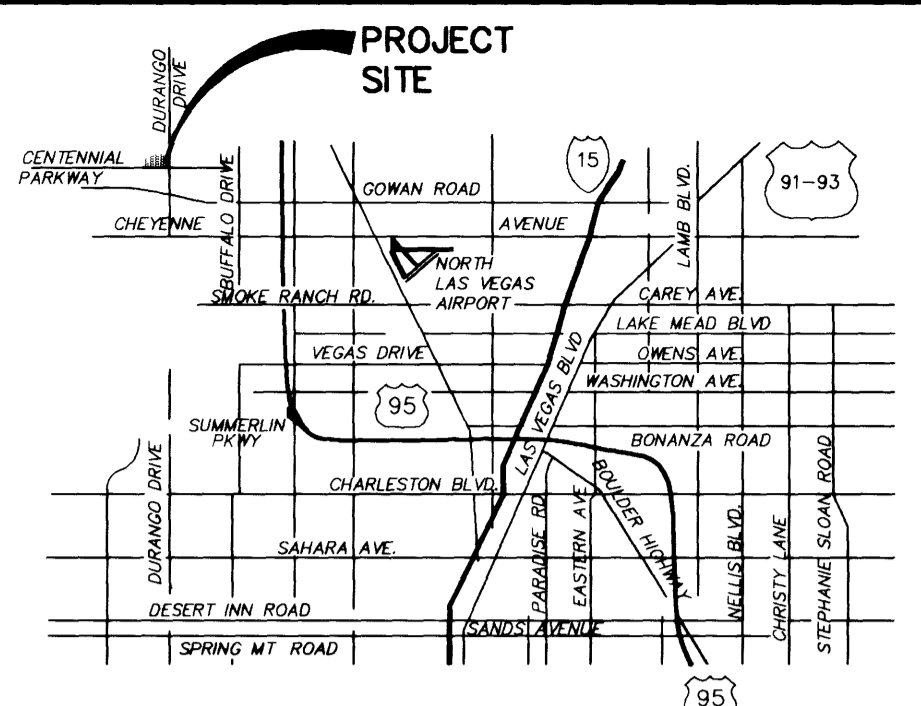


CONSTRUCTION NOTES

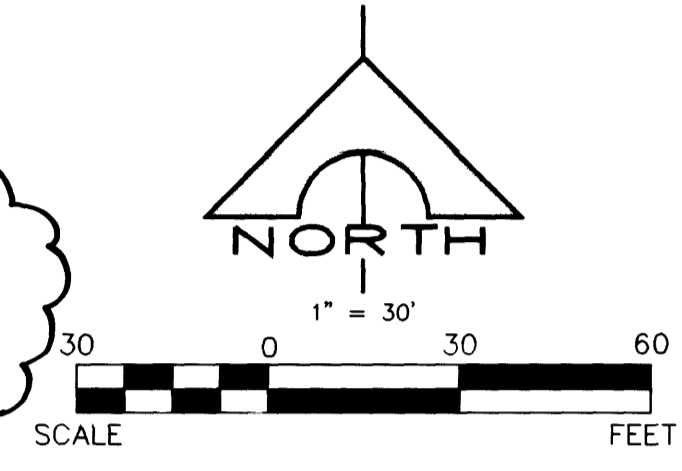
- 1 CONSTRUCT "A" TYPE CURB PER DETAIL (C18)
- 2 CONSTRUCT "L" TYPE CURB & GUTTER PER C.C. STD. DWG. #216
- 3 CONSTRUCT SIDEWALK RAMP PER USD #235, & TOWNCENTER DESIGN STDS.
- 4 CONSTRUCT 5' WIDE CONCRETE SIDEWALK PER USD #234
- 5 CONSTRUCT 3' WIDE VALLEY GUTTER PER DETAIL (C18)
- 6 CONSTRUCT 8' WIDE VALLEY GUTTER PER USD #228
- 7 CONSTRUCT 3' WIDE DRAINAGE FLUME PER DETAIL (C18)
- 8 CONSTRUCT 3" AC PAVEMENT OVER 4" TYPE II AGGREGATE BASE
- 9 CONSTRUCT 2" AC PAVEMENT OVER 4" TYPE II AGGREGATE BASE
- 10 CONSTRUCT 5.5" AC PAVEMENT OVER 4.5" TYPE II A.B. OVER 9" TYPE I A.B. (w/ 3/4" OPEN GRADE ON CENTENNIAL PKWY ONLY)
- 11 CONSTRUCT 2" AC PAVEMENT OVER 6" TYPE II AGGREGATE BASE (TEMPORARY PAVEMENT)
- 12 CONSTRUCT WALL OPENING PER DETAIL (C18)
- 14 INSTALL CONCRETE BUMPER BLOCK PER USD #238
- 15 INSTALL HANDICAP PARKING SIGN (VAN ACCESSIBLE) PER DETAIL (C18)
- 16 CONSTRUCT TRASH ENCLOSURE AND RETAINING WALL PER ARCHITECTURAL PLANS
- 17 CONSTRUCT HANDICAP ACCESS ROUTE/ISLE WITH 4" WIDE PAINTED STRIPES @ 24" O.C. (TYP)
- 18 CONSTRUCT SIDEWALK PER ARCHITECTURAL PLANS, USD #234 & TOWNCENTER DESIGN STDS.
- 19 NOT USED
- 20 CONSTRUCT BLOCK WALL PER ARCHITECTURAL PLANS
- 21 INSTALL R1-1 STOP SIGN
- 22 INSTALL SPEED LIMIT SIGN PER TRAFFIC PLAN
- 23 EDGE OF ASPHALTIC CONCRETE PAVEMENT
- 24 CONSTRUCT GRASS SWALE PER DETAIL (C18)
- 25 INSTALL RIP-RAP D50=12" THICKNESS OF BLANKET = 2'
- 26 EXTEND SIDEWALK AND CURB (AT THE BACK OF SIDEWALK) TO HIGH POINT
- 27 CONSTRUCT 1' DEEP RIP-RAP PAD USING D₅₀=6" ROCK
- 28 CONSTRUCT CURB ALONG BACK OF SIDEWALK PER DETAILS ON SHEET C18



NOTE: BUILDING CORNER DESIGN SHALL COMPLY WITH CITY OF LAS VEGAS SVRE REQUIREMENTS.



VICINITY MAP



HANDICAP TRANSITION LENGTHS FOR SIDE WALKS

H.C. TRANS CASE II		
	A	B
1	4.5'	12.0'
2	15.0'	4.5'
3	8'	8'

LEGEND

- [00.00] FUTURE ELEVATION
- [00.00] PROPOSED ELEVATION
- [00.00] EXISTING ELEVATION
- XXXX EXISTING CONTOUR
- █ BLOCK WALL
- DIRECTION OF FLOW
- ① CONSTRUCTION NOTE
- /// EDGE OF NEW PAVING
- STREET CENTERLINE
- SWALE
- 0.50% PROPOSED GRADE
- (0.50%) EXISTING GRADE
- EXISTING EDGE OF PAVING
- SAWCUT LINE
- - - GRADE BREAK
- PROPERTY LINE

BASIS OF BEARING

N 89°30'25" E BEING THE NORTH LINE OF SECTION 29, T 19 S, R 60 E, M.D.M., AS SHOWN ON RECORD OF SURVEY MAP FILE 89, PAGE 3.

BENCHMARK

CGCS 103029E4 RIVET AND SQUARE ALUMINUM PLATE IN A CONCRETE MONUMENT, 30 FEET NORTH AND 50 FEET WEST OF DURANGO DRIVE AND TROPICAL PARKWAY 753.221 METERS OR 2471.19 FEET. N.A.V.D. 88

DISCLAIMER NOTE

UTILITY LOCATIONS SHOWN HEREON ARE APPROXIMATE ONLY. IT SHALL BE THE CONTRACTOR'S RESPONSIBILITY TO DETERMINE THE EXACT HORIZONTAL AND VERTICAL LOCATION OF ALL EXISTING UNDERGROUND AND OVERHEAD UTILITIES PRIOR TO COMMENCING CONSTRUCTION. NO REPRESENTATION IS MADE THAT ALL EXISTING UTILITIES ARE SHOWN HEREON. THE ENGINEER ASSUMES NO RESPONSIBILITY FOR UTILITIES NOT SHOWN OR UTILITIES NOT SHOWN IN THEIR PROPER LOCATION. DESIGN CHANGES REQUIRED FOR FINAL CONSTRUCTION SHALL BE APPROVED BY ENGINEER IN WRITING PRIOR TO CONSTRUCTION.



ENGINEER'S CERTIFICATE

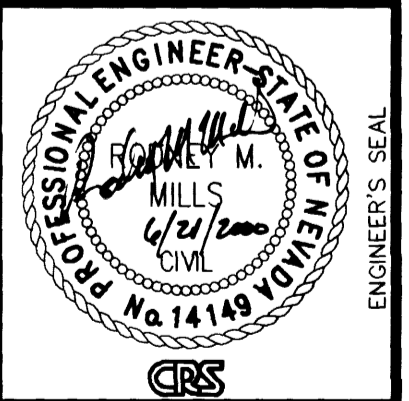
I CERTIFY THAT THE GRADING PLAN IS IN CONFORMANCE WITH THE APPROVED DRAINAGE STUDY ON FILE WITH THE CITY OF LAS VEGAS FOR THIS PROJECT.

Rodney M. Mills 6/21/2000
RODNEY M. MILLS P.E. No. 14149 DATE

SCALE (H)	SCALE (V)	DESIGN BY	DRAWN BY	REV. #	DATE	DESCRIPTION	APPROVAL
1"=30'	NONE	J.H.B.	J.A.S.				

TETRA Southwest
309 W. Lake Mead Dr. • Henderson, Nevada 89015
Phone: (702) 567-1820 • Fax: (702) 567-1821

JIM MARSH
AUTOMOBILE DEALERSHIP
CENTENNIAL PKWY. & DURANGO DR.
GRADING PLAN



SHEET C7
7 of 19 SHEETS
JOB# 99031
107-V 3 292

23489 27899