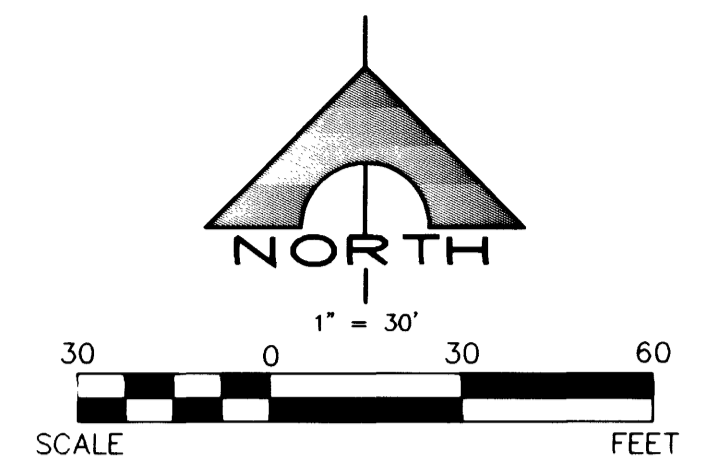
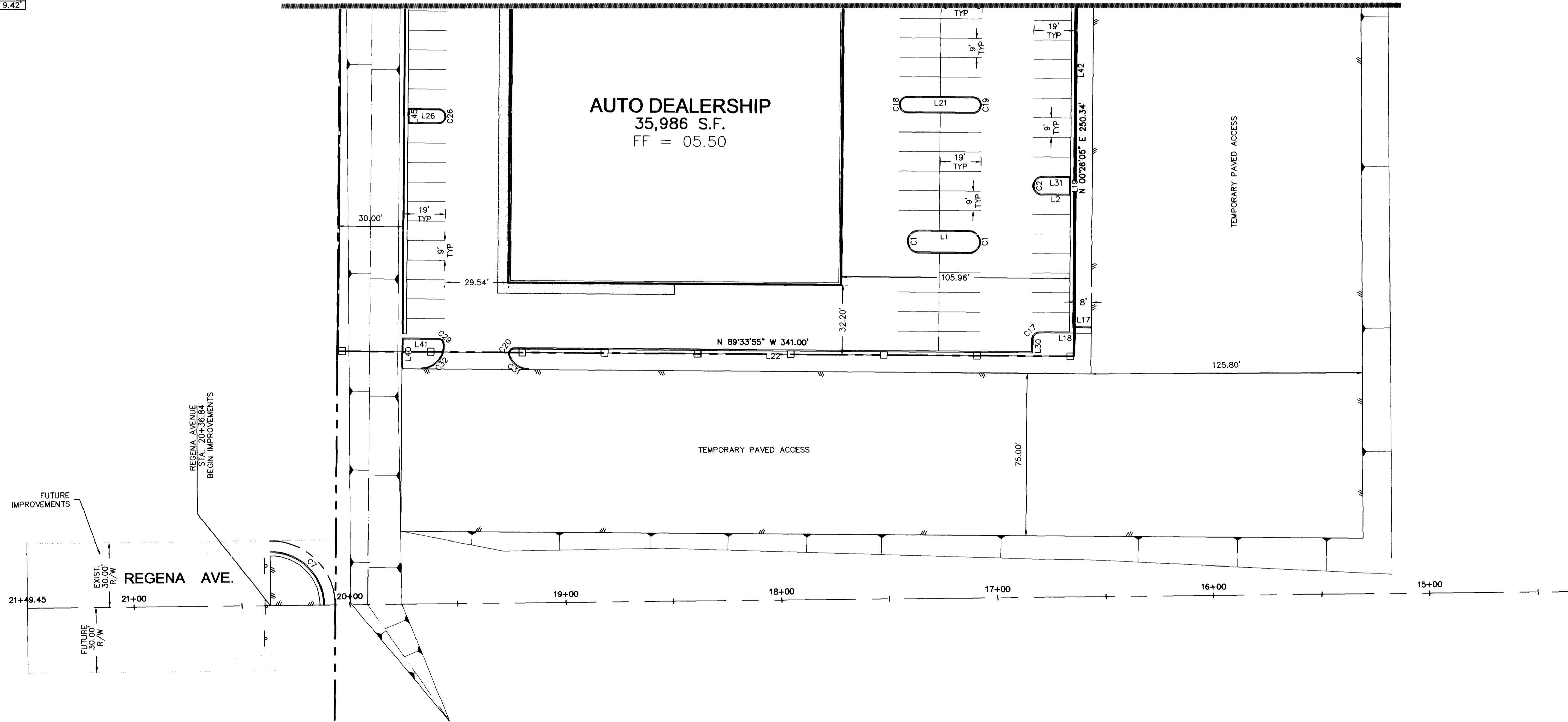


Bearing Table			Curve Table				
No.	Bearing	Distance	No.	Radius	Delta	Tangent	Length
L1	S 89°33'55" E	23.14	C1	4.86	180°00'00"	0.00	15.28
L2	S 89°33'55" E	12.68	C2	3.82	90°00'00"	0.00	12.60
L3	S 89°37'13" E	1.69	C3	200.00	13°28'05"	23.61	47.01
L4	N 89°30'25" E	798.00	C4	1.50	180°00'00"	0.00	4.71
L5	S 00°27'28" E	55.74	C5	25.00	90°09'12"	25.07	39.34
L6	S 09°00'16" W	60.83	C6	25.00	89°50'48"	24.93	39.20
L7	S 00°27'28" E	406.34	C7	25.00	90°00'00"	25.00	39.27
L8	S 00°27'28" E	602.96	C8	30.00	90°02'07"	30.02	47.14
L9	S 00°27'28" E	818.40	C10	7.00	90°00'00"	0.00	21.99
L10	N 89°30'25" E	427.74	C11	25.00	90°58'28"	25.41	39.68
L11	N 89°30'25" E	290.23	C12	25.00	90°17'31"	25.13	39.40
L12	N 89°30'25" E	183.01	C13	15.00	89°04'20"	14.76	23.32
L13	N 89°30'25" E	63.39	C14	25.00	90°55'40"	25.41	39.27
L14	N 89°15'35" E	129.82	C15	91.00	18°11'42"	14.57	28.90
L15	N 89°30'25" E	28.95	C16	109.00	18°11'42"	17.45	34.51
L16	S 89°33'55" E	8.00	C17	3.00	90°00'00"	3.00	4.71
L17	S 89°33'55" E	24.00	C18	3.29	90°00'00"	0.00	10.33
L18	N 00°26'05" E	7.64	C19	3.29	90°00'00"	0.00	10.33
L19	N 00°26'05" E	4.00	C20	2.00	106°02'48"	2.66	3.70
L20	S 89°33'55" E	30.42	C21	2.75	180°00'00"	0.00	8.64
L21	S 89°33'55" E	240.19	C22	2.75	90°00'00"	0.00	8.64
L22	S 89°33'55" W	32.00	C23	1.50	135°35'05"	3.67	3.55
L23	S 89°33'55" E	31.00	C24	5.00	44°24'55"	2.04	3.88
L24	S 89°33'55" E	14.00	C25	5.00	90°00'00"	5.00	7.85
L25	S 89°33'55" E	13.50	C26	3.00	180°00'00"	0.00	9.42
L26	S 44°24'51" W	26.51	C27	2.00	180°00'00"	1724.36	60.28
L27	N 00°26'05" E	31.93	C28	2.00	180°00'00"	0.00	6.28
L28	N 89°33'55" W	3.53	C29	2.00	81°14'57"	1.72	2.84
L29	N 00°26'05" E	6.14	C30	4.00	90°00'00"	4.00	6.28
L30	N 00°26'05" E	12.68	C31	9.00	73°57'12"	6.78	11.52
L31	N 89°33'55" W	14.47	C32	10.00	98°45'03"	11.66	17.24
L32	S 89°33'55" E	50.05	C33	347.00	0°24'31"	8.24	16.48
L33	S 89°33'55" E	81.50	C34	353.00	0°24'31"	8.38	16.76
L34	N 00°26'05" E	13.94	C35	347.00	0°21'33"	22.31	44.57
L35	N 00°26'05" E	12.17	C36	353.00	0°21'33"	22.70	45.34
L36	S 00°26'05" W	33.00	C37	3.00	180°00'00"	26.569772	9.42
L37	S 00°26'05" W	32.27	C38	5.00	90°38'08"	5.06	7.91
L38	S 00°26'05" W	29.82	C39	15.00	89°21'52"	14.83	23.40
L39	S 00°26'05" W	13.72	C40	25.00	90°38'08"	25.28	39.55
L40	S 89°33'55" E	18.41	C41	2.50	90°00'00"	0.00	7.85
L41	N 00°26'05" E	236.64	C42	2.50	180°00'00"	0.00	7.85
L42	N 07°32'32" W	9.63	C43	2.00	181°47'10"	128.30	6.35
L43	N 00°17'04" W	79.71	C44	3.00	180°00'00"	0.00	9.42
L44	S 00°26'05" W	6.00					
L45	S 00°26'05" W	4.00					
L46	N 00°17'04" W	148.43					
L47	N 89°33'55" E	8.01					
L48	N 89°33'55" W	73.00					
L49	S 00°26'05" W	23.78					
L50	S 00°26'05" W	23.46					
L51	S 00°26'05" W	438.50					
L52	S 00°26'05" W	33.02					
L53	S 00°26'05" W	22.77					
L54	S 00°26'05" W	54.50					
L55	N 00°17'04" W	13.44					
L56	N 89°33'55" W	55.00					
L57	N 89°33'55" W	64.00					
L58	S 00°26'05" W	14.00					
L59	S 00°26'05" W	33.02					
L60	S 00°26'05" W	22.77					
L61	S 00°26'05" W	438.50					
L62	N 00°26'05" E	1.50					
L63	N 00°26'05" E	22.77					
L64	S 89°33'55" E	37.00					
L65	S 89°33'55" E	3.89					
L66	N 00°26'05" E	54.50					
L67	N 89°33'55" W	14.65					
L68	S 89°33'55" E	17.00					
L69	N 00°26'05" E	64.00					
L70	S 89°33'55" E	2.00					
L71	N 89°33'55" W	14.50					
L72	S 89°33'55" E	14.50					

NOTE:
DIMENSIONS ARE TO BACK OF CURB
UNLESS OTHERWISE NOTED.



MATCHLINE SEE SHEET C3



DISCLAIMER NOTE

UTILITY LOCATIONS SHOWN HEREON ARE APPROXIMATE ONLY. IT SHALL BE THE CONTRACTOR'S RESPONSIBILITY TO DETERMINE THE EXACT HORIZONTAL AND VERTICAL LOCATION OF ALL EXISTING UNDERGROUND AND OVERHEAD UTILITIES PRIOR TO COMMENCING CONSTRUCTION. NO REPRESENTATION IS MADE THAT ALL EXISTING UTILITIES ARE SHOWN HEREON. THE ENGINEER ASSUMES NO RESPONSIBILITY FOR UTILITIES NOT SHOWN OR UTILITIES NOT SHOWN IN THEIR PROPER LOCATION. DESIGN CHANGES REQUIRED FOR FINAL CONSTRUCTION SHALL BE APPROVED BY ENGINEER IN WRITING PRIOR TO CONSTRUCTION.



BASIS OF BEARING

N 89°30'25" E
BEING THE THE NORTH LINE OF SECTION 29,
T 19 S, R 60 E, M.D.M., AS SHOWN ON
RECORD OF SURVEY MAP FILE 89, PAGE 3.

BENCHMARK

CCVC 1C9029E4
RIVET AND SQUARE ALUMINUM PLATE IN A CONCRETE
MONUMENT, 30 FEET NORTH AND 50 FEET WEST OF
DURANGO DRIVE AND TROPICAL PARKWAY
753.221 METERS
OR 2471.19 FEET, N.A.V.D. 88

NOTE:
*OWNER RESPONSIBLE TO PROVIDE SURVEY MONUMENTATION AS SHOWN AND TO REPLACE ALL SURVEY MONUMENTATION DAMAGED, DISTURBED, DESTROYED OR OBLISCURED DURING CONSTRUCTION.

23486

APPROVAL	
DESCRIPTION	
DATE	
BY	
REV. #	
J.A.S.	
SCALE (H)	1"=30'
SCALE (V)	NONE
DESIGN BY	J.H.B.
DRAWN BY	J.A.S.
JIM MARSH AUTOMOBILE DEALERSHIP CENTENNIAL PKWY. & DURANGO DR. HORIZONTAL CONTROL PLAN	
SHEET C4 4 OF 19 SHEETS	
JOB# 99031 /07-V329Z	