

SEWER IMPROVEMENTS

- INSTALL 4' DIA SEWER MANHOLE PER STD DWG SD-1
CONSTRUCT 8" DIA SOLID WALL PVC SEWER LINE ( SDR - 35 )
CONSTRUCT 6" DIA SOLID WALL PVC SEWER SERVICE LATERAL PER STD DWG SD-17 AND SD-18
INSTALL 4' DIA SEWER DROP MANHOLE PER STD DWG SD-8
INSTALL 5 LF 8" PVC STUB @ 2% MIN AND SEWER PLUG

WATER IMPROVEMENTS

- CONSTRUCT 10" PVC WATER LINE ( C-900, CLASS 150 )
INSTALL 10" 90 ELBOW W/ THRUST BLOCK PER PLATE 5
INSTALL 10" GATE VALVE PER PLATE 8
INSTALL 10 x10" x10" TEE W/ THRUST BLOCK PER PLATE NO. 3
INSTALL 2" RPPA PER PLATE 11A

WATER IMPROVEMENTS

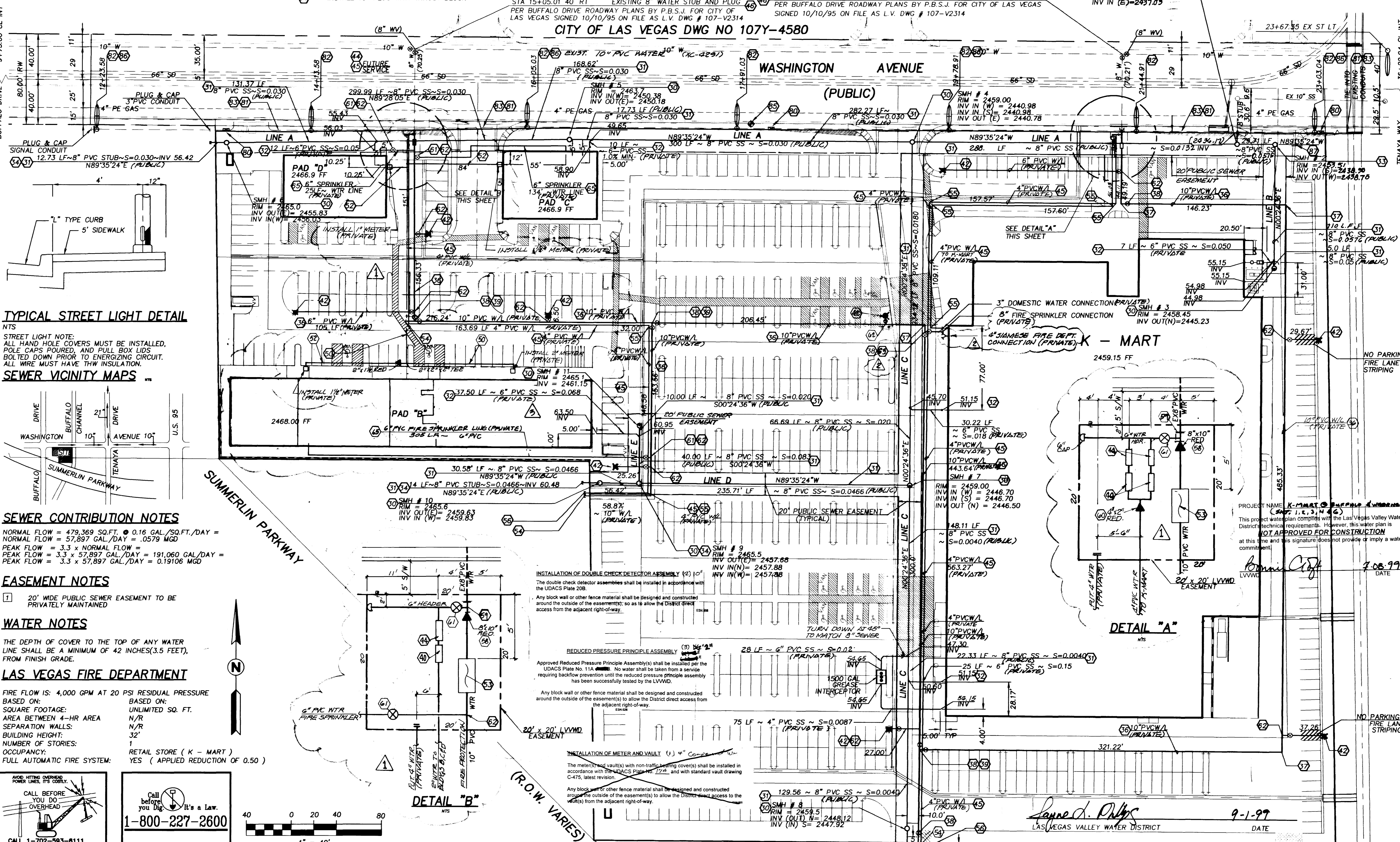
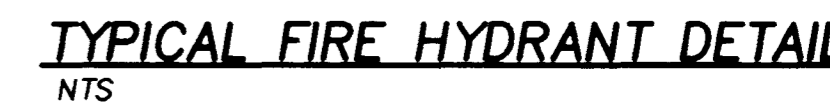
- INSTALL FIRE HYDRANT ASSEMBLY PER PLATE 7
INSTALL 2" WATER SERVICE & METER PER PLATE 10 & 11A
INSTALL 4" PVC WATER LINE ( C-900, CLASS 150 )
REMOVE 8" PLUG AND CONNECT
INSTALL 6" TEE
INSTALL 2" PVC WATER LINE ( C-900, CLASS 150 )
INSTALL 1" PVC WATER LINE ( C-900, CLASS 150 )
INSTALL 1-1/2" PVC WATER LINE ( C-900, CLASS 150 )
INSTALL 10" DCDA PER PLATE 20B (N/T) PER DCDA MOL. 876
INSTALL 10" PLUG WITH THRUST BLOCK

WATER IMPROVEMENTS

- INSTALL 4 90BEND
INSTALL 4" PLUG
INSTALL 4-4" BOLLARDS PER PLATE 23
INSTALL 10"x8" REDUCER
INSTALL 8"x8"x6" TEE
INSTALL 4" x 2" REDUCER
INSTALL 6" GATE VALVE PER PLATE NO. 8
INSTALL 10"x6"x10" TEE
INSTALL 10"x8"x10" TEE
INSTALL 6" 90° BEND
INSTALL 6" PVC FIRE SPRINKLER WATER LINE
PAINT YELLOW STRIPING PER FIRE CODE OF CLARK COUNTY

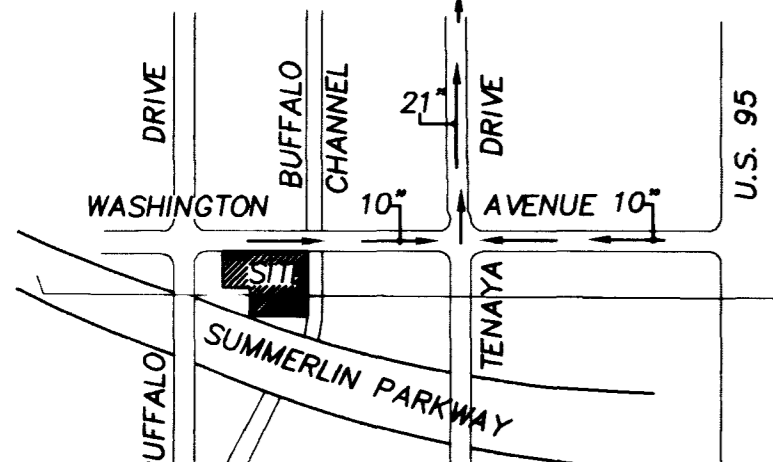
TRAFFIC IMPROVEMENTS

- INSTALL NO 7 PULL BOX PER STD DWG 326
INSTALL 3" PVC CONDUIT (WITH PULLSTRINGS) FOR FUTURE TRAFFIC SIGNAL INTERCONNECT
INSTALL 200W HPS STREET LIGHT PER STD DWG 306 AND 307
INSTALL 1-1/4" STREET LIGHT CONDUIT PER STD DWG 501
INSTALL NO 3-1/2 PULL BOX PER STD DWG 326
INSTALL STREET LIGHT SERVICE POINT PER STD DWG 333
INSTALL R8-3A (NO PARKING)
INSTALL R1-1 (STOP SIGN)



STREET LIGHT NOTE: ALL HAND HOLE COVERS MUST BE INSTALLED, POLE CAPS POURED, AND PULL BOX LIDS BOLTED DOWN PRIOR TO ENERGIZING CIRCUIT. ALL WIRE MUST HAVE THW INSULATION.

SEWER VICINITY MAPS



SEWER CONTRIBUTION NOTES

NORMAL FLOW = 479,369 SQ.FT. @ 0.16 GAL./SQ.FT./DAY = 77,897 GAL./DAY = .0579 MGD
PEAK FLOW = 3.3 x NORMAL FLOW = 257,169 GAL./DAY = 0.19106 MGD

EASEMENT NOTES

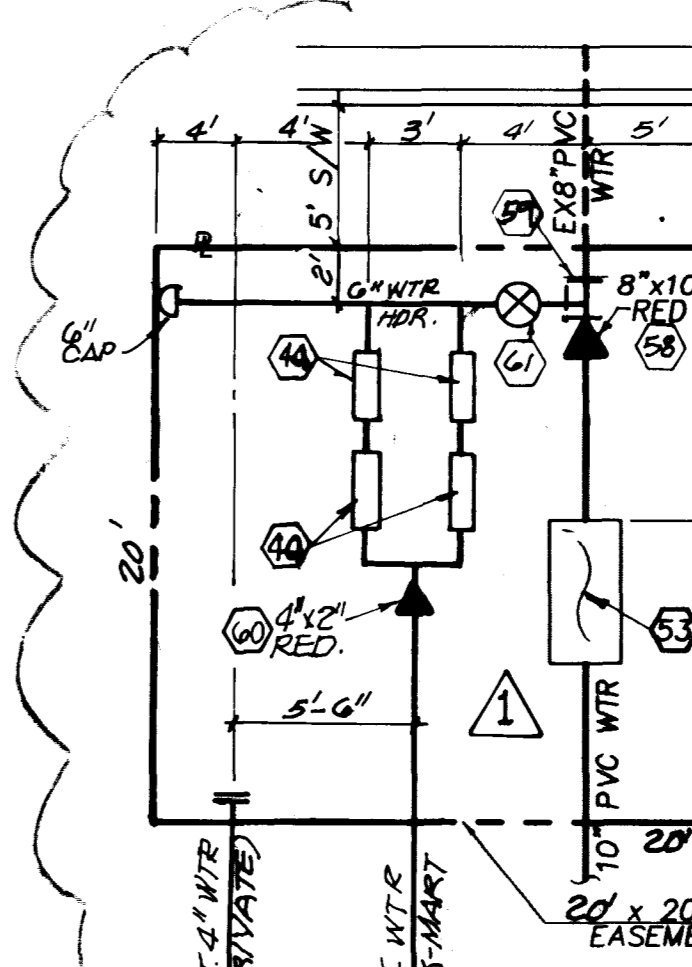
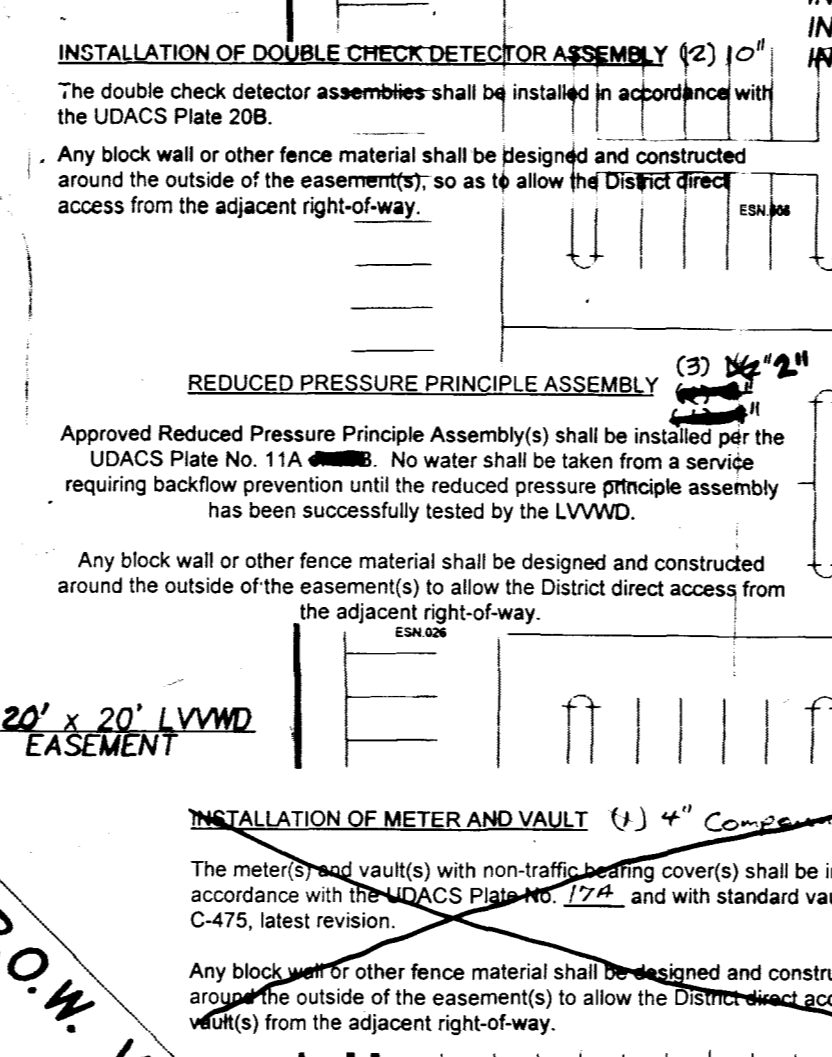
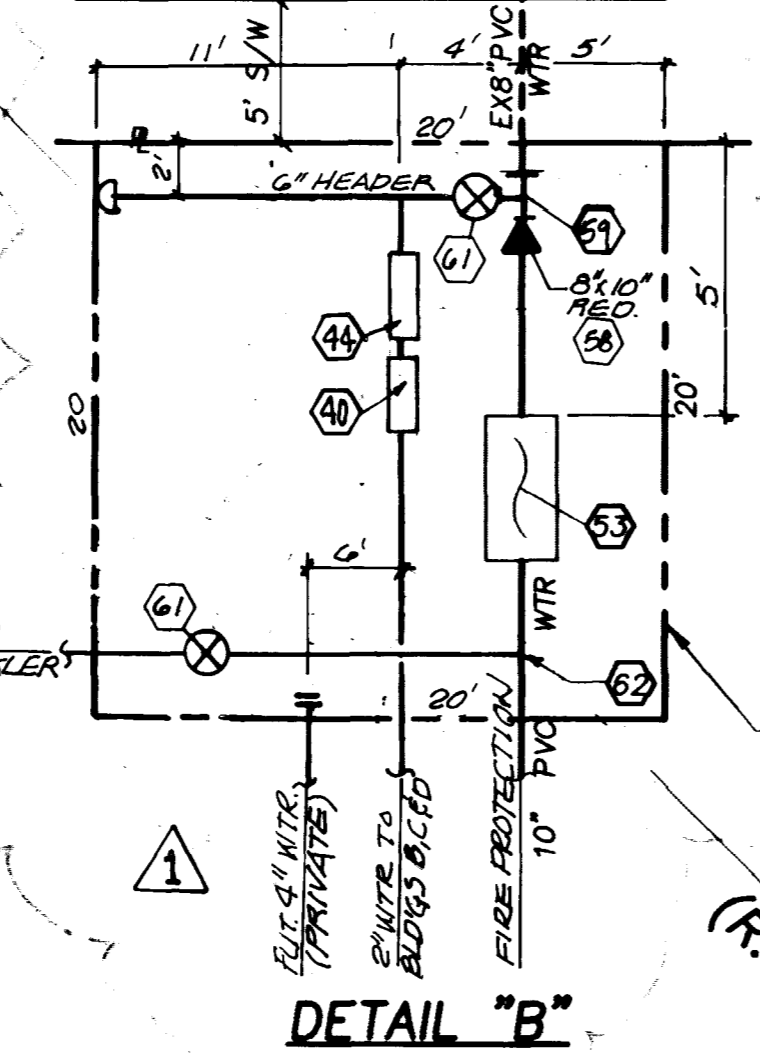
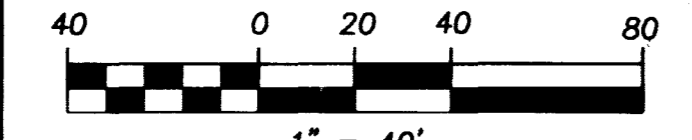
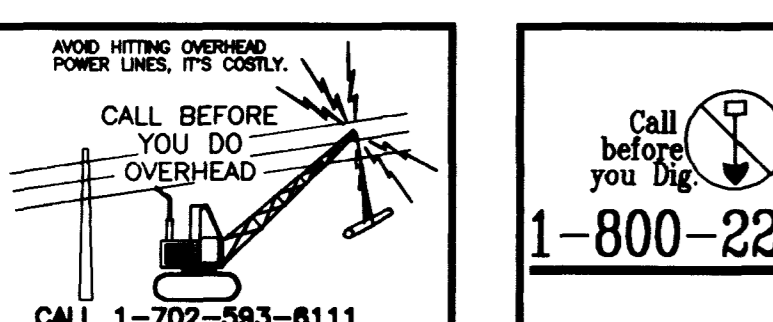
20' WIDE PUBLIC SEWER EASEMENT TO BE PRIVATELY MAINTAINED

WATER NOTES

THE DEPTH OF COVER TO THE TOP OF ANY WATER LINE SHALL BE A MINIMUM OF 42 INCHES (3.5 FEET), FROM FINISH GRADE.

LAS VEGAS FIRE DEPARTMENT

FIRE FLOW IS: 4,000 GPM AT 20 PSI RESIDUAL PRESSURE
BASED ON: SQUARE FOOTAGE: UNLIMITED SQ. FT.
AREA BETWEEN 4-HR AREA: N/R
SEPARATION WALLS: N/R
BUILDING HEIGHT: 3'
NUMBER OF STORIES: 1
OCCUPANCY: RETAIL STORE ( K - MART )
FULL AUTOMATIC FIRE SYSTEM: YES ( APPLIED REDUCTION OF 0.50 )



Signature of Laurel D. Peltys, dated 9-1-99, LAS VEGAS VALLEY WATER DISTRICT

Vertical sidebar containing project information: LAURICH PROPERTIES, INC. (K-MART # 9389), AGRAINFRASTRUCTURE inc., MASTER UTILITY PLAN, K-MART #9389, 7500 BLOCK OF WASHINGTON AVENUE, 300' EAST OF BUFFALO DRIVE, CITY OF LAS VEGAS. Includes drawing number 107-V3110 and sheet number 6 OF 17 SHEETS.

**SEWER IMPROVEMENTS**

INSTALL 12" DIAM. SEWER MAIN FOR THE 100' x 100' AREA OF THE WEST SIDE OF THE MAIN SANITARY MAIN (SEE PLAN) WITH 12" DIAM. SEWER MAIN FOR THE 100' x 100' AREA OF THE EAST SIDE OF THE MAIN SANITARY MAIN (SEE PLAN)

**WATER IMPROVEMENTS**

INSTALL 12" DIAM. WATER MAIN FOR THE 100' x 100' AREA OF THE WEST SIDE OF THE MAIN WATER MAIN (SEE PLAN) WITH 12" DIAM. WATER MAIN FOR THE 100' x 100' AREA OF THE EAST SIDE OF THE MAIN WATER MAIN (SEE PLAN)

**WATER IMPROVEMENTS**

INSTALL 12" DIAM. WATER MAIN FOR THE 100' x 100' AREA OF THE WEST SIDE OF THE MAIN WATER MAIN (SEE PLAN) WITH 12" DIAM. WATER MAIN FOR THE 100' x 100' AREA OF THE EAST SIDE OF THE MAIN WATER MAIN (SEE PLAN)

**WATER IMPROVEMENTS**

INSTALL 12" DIAM. WATER MAIN FOR THE 100' x 100' AREA OF THE WEST SIDE OF THE MAIN WATER MAIN (SEE PLAN) WITH 12" DIAM. WATER MAIN FOR THE 100' x 100' AREA OF THE EAST SIDE OF THE MAIN WATER MAIN (SEE PLAN)

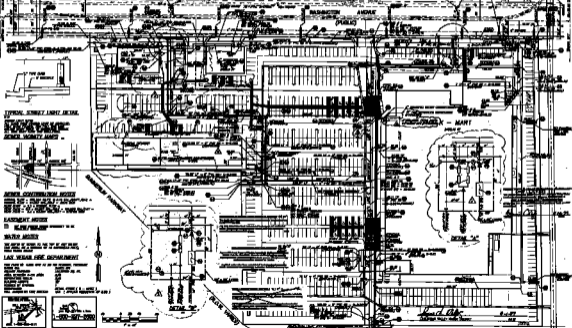
**TRAFFIC IMPROVEMENTS**

INSTALL 12" DIAM. WATER MAIN FOR THE 100' x 100' AREA OF THE WEST SIDE OF THE MAIN WATER MAIN (SEE PLAN) WITH 12" DIAM. WATER MAIN FOR THE 100' x 100' AREA OF THE EAST SIDE OF THE MAIN WATER MAIN (SEE PLAN)



TYPICAL FIRE HYDRANT DETAIL

CITY OF LAS VEGAS DEPT. OF CITY ENGINEERING  
1000 EAST FLORISSANT AVENUE, SUITE 100  
LAS VEGAS, NEVADA 89101



TYPICAL STREET LIGHT DETAIL



SEWER MANHOLE DETAIL



WATER MANHOLE DETAIL

REVISIONS table with columns for NO., DATE, and DESCRIPTION. Includes a drawing of a utility pole and a scale bar.

AGRA ENGINEERING, INC.  
1000 EAST FLORISSANT AVENUE, SUITE 100  
LAS VEGAS, NEVADA 89101

MASTER UTILITY PLAN  
1000 EAST FLORISSANT AVENUE, SUITE 100  
LAS VEGAS, NEVADA 89101

