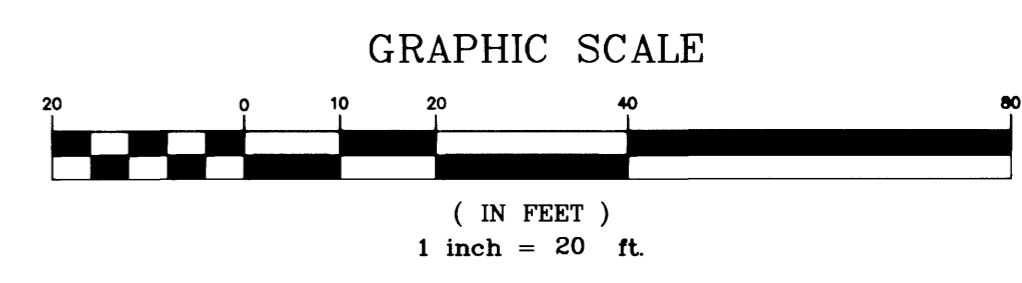
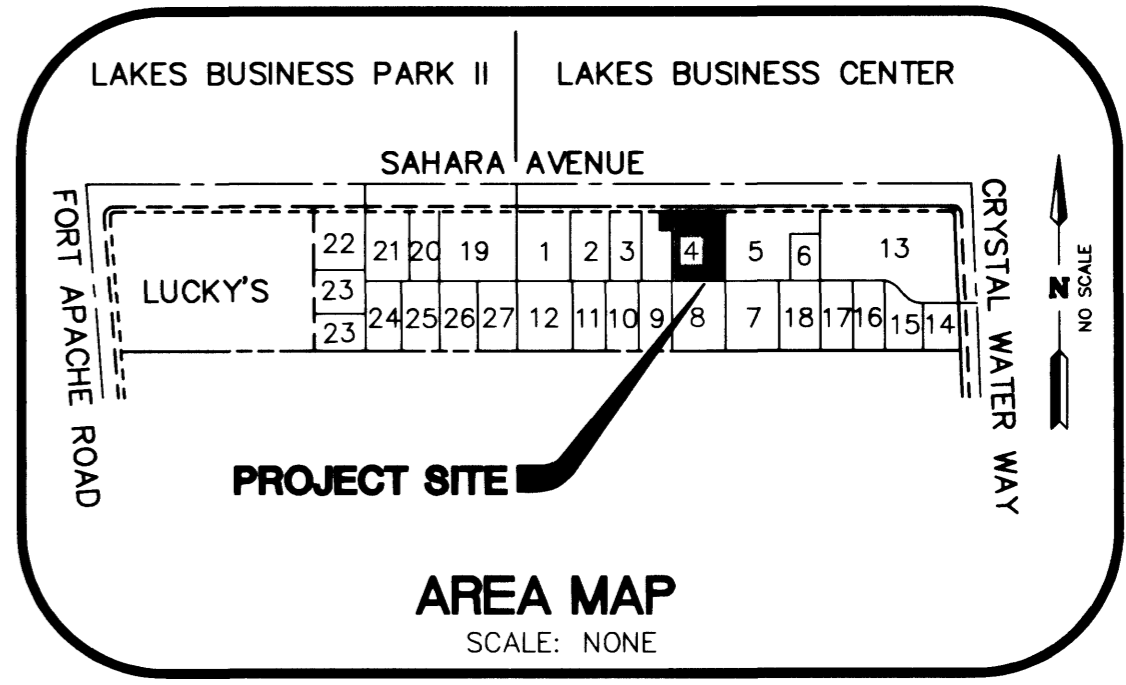
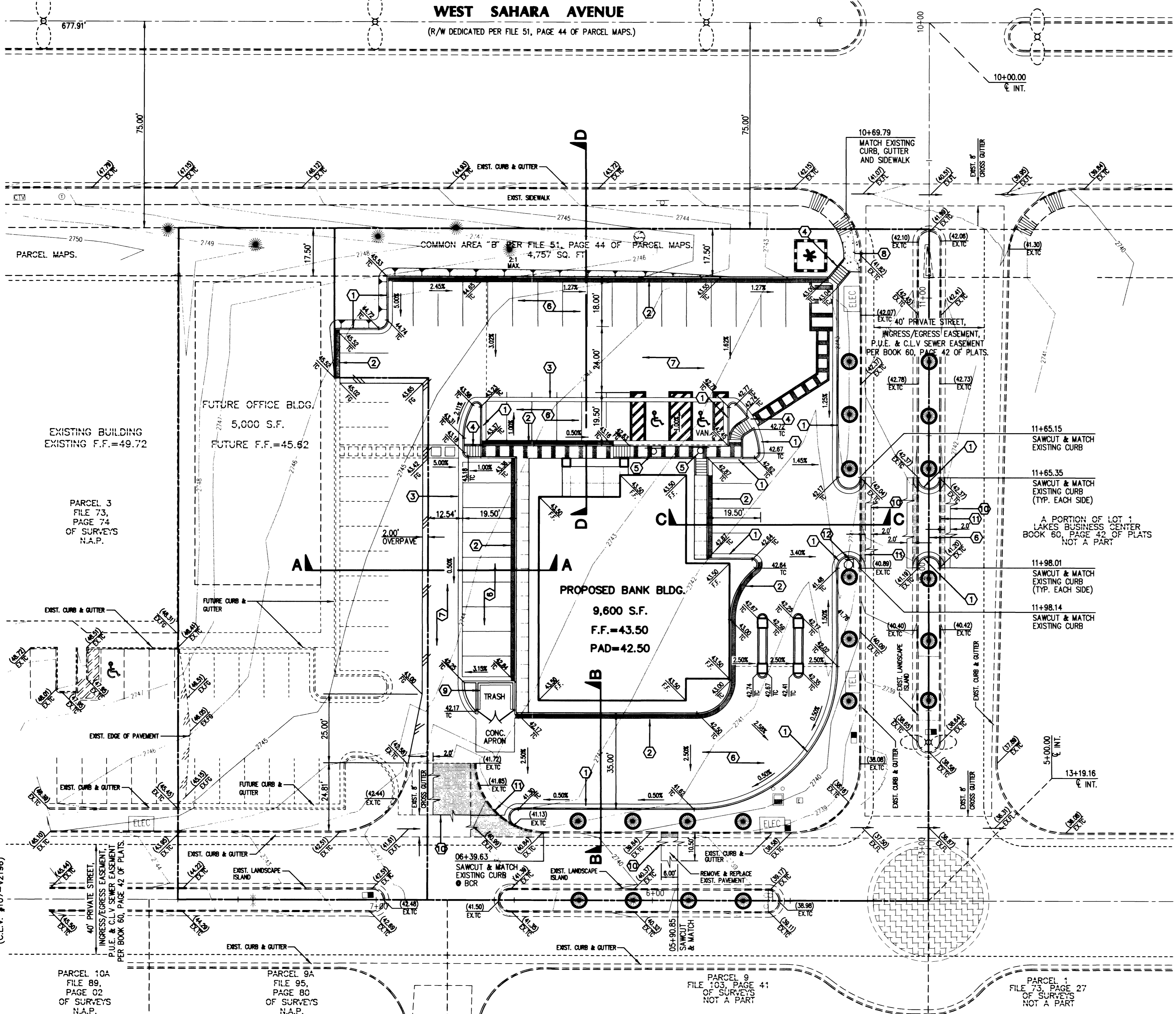


WEST SAHARA AVENUE

WEST SAHARA AVENUE

WEST SAHARA AVENUE

(R/W DEDICATED PER FILE 51, PAGE 44 OF PARCEL MAPS.)



- LEGEND
'L' TYPE CURB & GUTTER
'TIP-OUT' CURB & GUTTER
EXISTING CURB & GUTTER
BOUNDARY LINE
CENTER LINE
PROP. EDGE OF PAVEMENT
EXIST. EDGE OF PAVEMENT
SCARP 2:1 MAX.
A.D.A. ROUTE
EXIST. TELEPHONE VAULT
EXIST. ELECTRIC VAULT
EXIST. STREET LIGHT
EXIST. POWER BOX
EXIST. CABLE TV BOX
EXIST. CONC. PLANTER W/TREE
EXIST. TELEPHONE MANHOLE
EXIST. AREA LIGHT
EXIST. 5' CONTOURS
EXIST. 1' CONTOURS

CONSTRUCTION NOTES

- 1 CONST. 'L' TYPE CURB PER C.C. AREA STD. DWG. NO. 216
2 CONST. TIP-OUT CURB PER DETAIL SHEET
3 CONST. 1.50' CROSS GUTTER PER DETAIL SHEET
4 CONST. HANDICAP RAMP PER DETAIL SHEET
5 INSTALL R7-8 (12"x18" \$100.00 FINE IF USED BY OTHERS) N.R.S. 484.408
6 CONST. 2" PAVEMENT SECTION PER DETAIL SHEET
7 CONST. 3" PAVEMENT SECTION PER DETAIL SHEET
8 CONST. SIDEWALK PER C.C. AREA STD. DWG. NO. 234
9 CONST. TRASH ENCLOSURE PER SILVER STATE STANDARDS
10 SAWCUT & MATCH EXIST. PAVEMENT
11 REMOVE EXIST. CURB & GUTTER
12 INSTALL R1-1 (STOP SIGN)

PRIVATE STREET
EXISTING STREET IMPROVEMENTS
PER 'LAKES BUSINESS CENTER'
BY ENGINEERS AND SURVEYORS INC.
(C.L.V. #107-V2196)

PRIVATE STREET
EXISTING STREET IMPROVEMENTS
PER 'LAKES BUSINESS CENTER'
BY ENGINEERS AND SURVEYORS INC.
(C.L.V. #107-V2196)

BASIS OF BEARINGS
THE BASIS OF BEARINGS FOR THIS SURVEY IS THE NORTHERLY LINE OF THE NORTHWEST QUARTER (NW 1/4) OF SECTION 8, TOWNSHIP 21 SOUTH, RANGE 60 EAST, M.D.M. WHICH BEARS NORTH 87 54'33" WEST AS SHOWN BY A MAP ON FILE IN THE OFFICE OF THE CLARK COUNTY, NEVADA, RECORDER IN FILE 49 ON PAGE 85 OF PARCEL MAPS.

BENCH MARK:
CLV BM #24/LV1055WS
RIVET & PLATE IN CURB, NE RETURN OF FORT APACHE & SAHARA
ELEVATION = 2788.951 U.S. SURVEY FEET (NAVD 88)
(EQ. = -2.45 FT. TO ESTABLISH NAD 29)

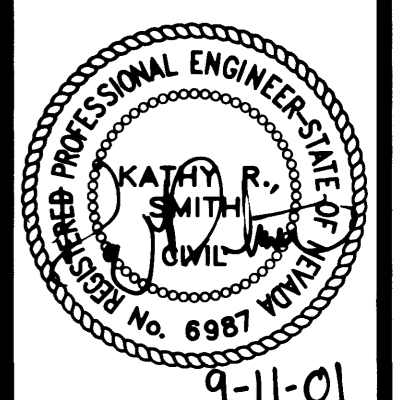
Call before you Dig
1-800-227-2600
UNDERGROUND SERVICE (USA)

Call before you Overhead
1-702-593-6111
SUNBELT POWER DEVELOPMENT INC.
SHEET SERVICES DEPARTMENT

COLLINS AND COLLINS DEVELOPMENT
4780 WEST HARMON, SUITE 11
LAS VEGAS, NEVADA 89103
CONTACT: BRIAN COLLINS OR KEITH UNDERWOOD (702) 889-5051

MASTER GRADING PLAN
LOT 4
AT THE LAKES BUSINESS PARK

Table with columns: SHEET, DRAWN BY, DESIGNED BY, CHECKED BY, PROJECT NO., TITLE, DATE, REVISION.



9-11-01
SHEET G1
6 OF 8 SHEETS
DRAWING NO. 107-V3040-4