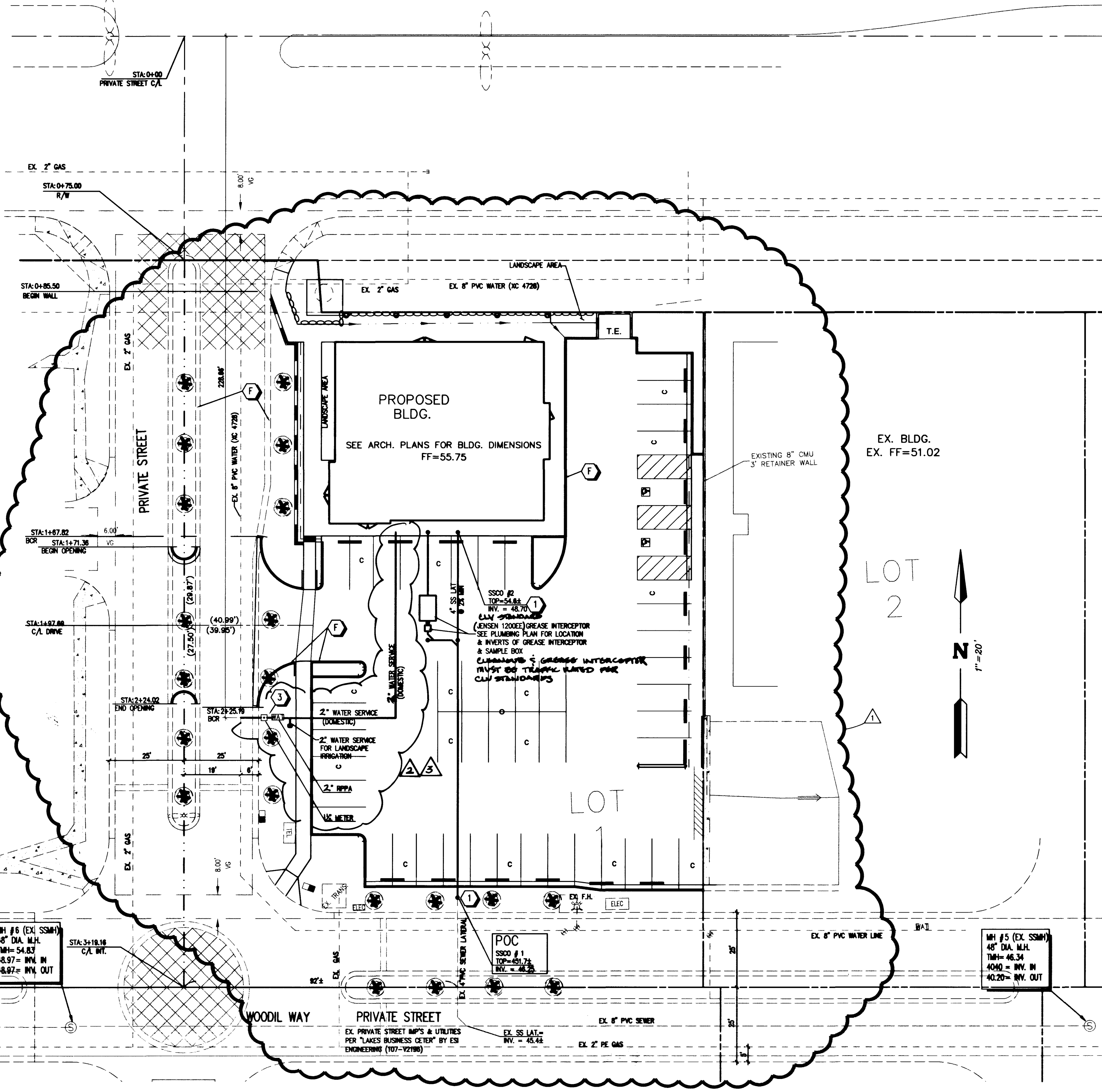
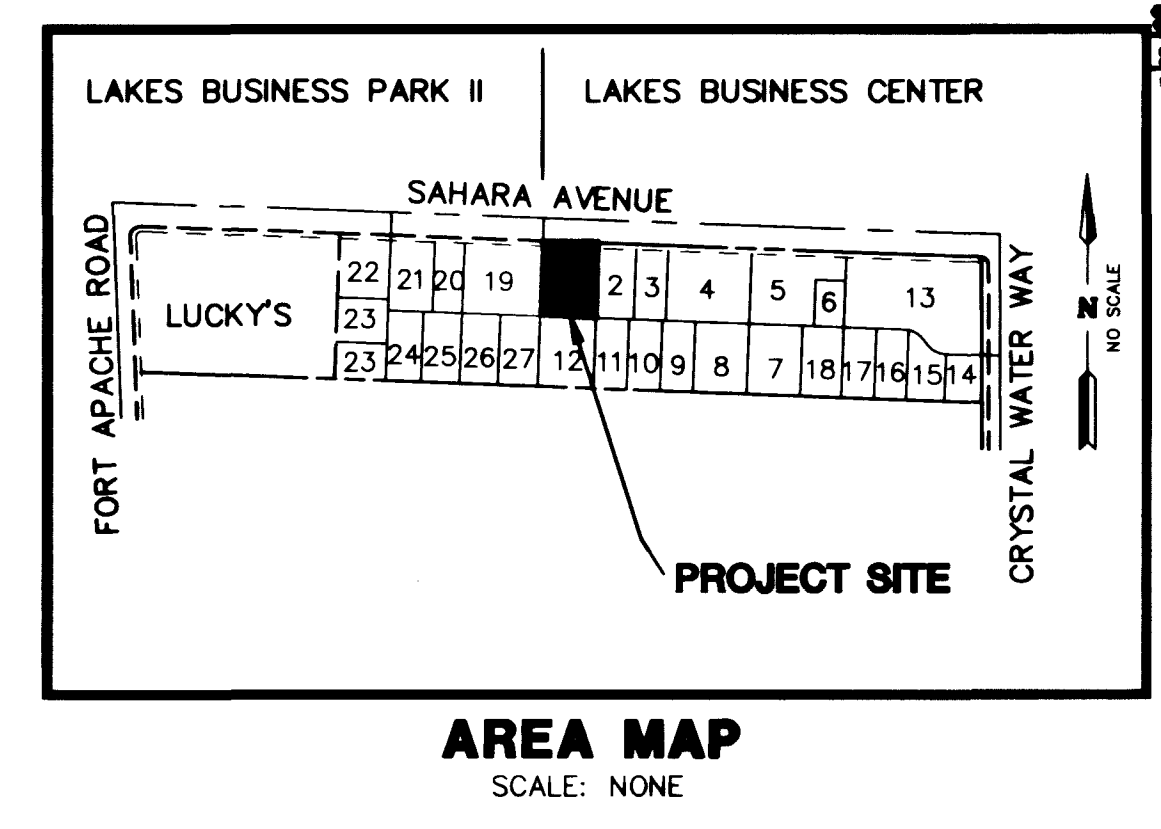


# SAHARA AVE.



### LEGEND

DESCRIPTION	PROPOSED	EXISTING
CENTERLINE RIGHT-OF-WAY PROPERTY LINE CONSTRUCTION	XX.XX TC	(XX.XX) TC
CONTOUR	100	200
CHAIN LINK FENCE	---	---
RETAINING WALL	---	---
STONE RETAINING WALL	---	---
SEWER MAIN	8" SS	8" SS
WATER MAIN	8" W	8" W
EXIST. GAS	---	---
EXIST. TELEPHONE	---	---
EXIST. ELECTRICAL	---	---
EXIST. FENCE	---	---
EXIST. CABLE TELEVISION	---	---
PAD ELEVATION	XX.XX	XX.X
TRAFFIC SIGNAL POLE WITH LUMINAIRE	---	---
TRAFFIC SIGNAL POLE	---	---
TRAFFIC CONTROL SIGN	---	---
100 W LUMINAIRE	---	---
PULL BOX	---	---
VALVE	---	---
FIRE HYDRANT	---	---
MONUMENT	---	---
"L" CURB & GUTTER	---	---
"A" CURB & GUTTER	---	---
SIDEWALK RAMPS	---	---
IRRIGATION VALVE	---	---
PLANTER	---	---
RED PAINTED CURB	---	---



- ### LAS VEGAS VALLEY WATER DISTRICT STANDARD NOTES
- No work shall begin until the water plans have been released for construction by the LVWD. Following water plan approval, 48 hour notice shall be given to the LVWD Communication Support Center (258-7171) prior to the start of construction. Notices must be given by 2:00 p.m. the business day prior to a LVWD inspection.
  - All work shall conform to the LVWD's Standard Plans, Drawings, and Specifications and the Uniform Design and Construction Standards for Water Distribution Systems (UDACS), latest edition.
  - All work, except as modified by these plans or by Note 2, shall be done in accordance with the most current draft or edition of the Uniform Standard Specifications for Public Works Construction Office Improvement, Clark County Area.
  - A single pipe material shall be used throughout the project unless otherwise approved by the LVWD.
  - All service laterals two (2) inches in diameter and smaller shall be copper tubing with LVWD approved service saddles.
  - All water meter bases shall be located outside of driveway areas.
  - All valves shall be located outside of driveways, valley and curb gutters.
  - The following requirements must be met in the event a water line and sanitary or storm sewer line cross:
    - A minimum eighteen (18) inch vertical separation (outside to outside) must be maintained when the water line is installed over the sanitary or storm sewer line. If the vertical separation cannot be maintained or the water line must be placed under the sanitary or storm sewer line, the sanitary or storm sewer line must be constructed with one of the following, or, as shown on these plans:
      - Potable Water supply quality material,
      - Encasement, with four (4) inch concrete (minimum)
      - Shielding with potable water supply quality pipe.
  - Each provision must extend along the sanitary or storm sewer, on either side of the main, a minimum 10 foot distance perpendicular to the water main asterisk.
  - Warning tape shall be required over all mains, all six (6) inch diameter and larger service laterals, and any service lateral not installed perpendicular to the main in accordance with Standard Plate No.27.
  - All water facilities shall be filled, disinfected, pressure tested, flushed, and filled and an acceptable water sample obtained, prior to connection to the LVWD's distribution system.
  - The contractor must obtain all meters two (2) inches and smaller from LVWD Central Stores. Telephone 258-3152 forty-eight (48) hours prior to pickup.
  - Construction may interrupt service, with LVWD approval and proper notification, between the hours of 10 PM and 6 AM, Sunday through Thursday. Circumstances may require temporary service feeds be installed, without LVWD reimbursement. Any temporary service feed must have prior LVWD approval.
  - All water facility construction materials used must be as listed on the LVWD's Pre-Approved Materials and Manufacturers Listing for New Facilities, latest revision, or specifically approved on these plans.

### ABBREVIATIONS

BCR	BACK OF CURB RADIUS
C/L	CENTERLINE
R/W	RIGHT OF WAY
AVE.	AVENUE
ST.	STREET
BM	BENCHMARK
BVC	BEGIN VERTICAL CURVE
PVI	POINT VERTICAL INTERSECTION
EVC	END VERTICAL CURVE
CLV	CITY OF LAS VEGAS
CY	CUBIC YARD
SY	SQUARE YARD
SF	SQUARE FEET
LF	LINEAR FEET
TC	TOP OF CURB
FG	FINISH GRADE
FL	FLOWLINE
FF	FINISH FLOOR
EP	EDGE OF PAVEMENT
EXIST	EXISTING
FH	FIRE HYDRANT
LT	LEFT
RT	RIGHT
PB	PULLBOX
PP	POWER POLE
PVC	POLYVINYL CHLORIDE
VG	VALLEY GUTTER
VC	VERTICAL CURVE
WM	WATER METER
W	WATER
TP	TELEPHONE POLE
TYP	TYPICAL
TOB	TOP OF BERM

### SEWER CLEANOUT CONTROL TABLE

C.O.#	NORTHING	EASTING
1	4656.50	6483.16
2	4779.08	6487.63

### CONSTRUCTION NOTES

**ON-SITE**

3" ASPHALTIC CONCRETE PAVING	1,077 SY
2" ASPHALTIC CONCRETE PAVING	898 SY
24" "L" TYPE CURB & GUTTER	147 LF
"A" TYPE CURB & GUTTER	345 LF
CONCRETE VALLEY GUTTER	210 SF
TYPE 1 & TYPE II BASE GRAVEL	287 CY
CONCRETE WALKWAY	2,482 SF

**SANITARY SEWER**

① 4" CLEANOUT	2 EA
② 4" PVC SEWER LATERAL	123 LF

**WATER LINE**

③ 1/2" METER PER UDACS PLATE #10	1 EA
2" RPPA PER UDACS PLATE #11A (DOMESTIC /LANDSCAPE IRRIG. SERVICE)	1 EA
④ 2" WATER SERVICE LATERAL	100 LF

NOTE: THESE QUANTITIES ARE ONLY ESTIMATES. CONTRACTOR TO VERIFY.

### BENCHMARK

CLV BM #24/ILV10 55WS  
RIVET & PLATE IN CURB, NE RETURN OF FORT APACHE ROAD & SAHARA AVENUE.

NAVD 88 DATUM  
ELEVATION = 850.0740 U.S. SURVEY METERS  
ELEVATION = 2788.951 U.S. SURVEY FEET

EQUATION FOR NGVD 29  
U.S. SURVEY FEET MINUS 2.45 FEET

### BASIS OF BEARINGS

THE BASIS OF BEARINGS FOR THIS SURVEY IS THE NORTHERLY LINE OF THE NORTHWEST QUARTER (NW 1/4) OF SECTION 8, TOWNSHIP 21 SOUTH, RANGE 60 EAST, M.D.M. WHICH BEARS NORTH 87° 54' 33" WEST AS SHOWN BY A MAP ON FILE IN THE OFFICE OF THE CLARK COUNTY, NEVADA, RECORDER IN FILE 49 ON PAGE 85 OF PARCEL MAPS.

- ### CONSTRUCTION NOTES
- ALL EXISTING UTILITY STRUCTURES WITHIN CONSTRUCTION AREA SHALL BE ADJUSTED TO MATCH FINISH GRADE (I.E. WV. BOX, WMH, ANNODE BOX, FH, TEL BOX, ETC.).
  - ALL DIMENSIONS TO UTILITIES ARE TO CENTERLINE OF PIPE UNLESS INDICATED OTHERWISE
  - CONTRACTOR SHALL VERIFY HORIZONTAL AND VERTICAL ALIGNMENT OF EXISTING UTILITIES AND TO NOTIFY THE DESIGN ENGINEER IMMEDIATELY ON ANY DISCREPANCIES PRIOR TO CONSTRUCTION.

### FIRE DEPARTMENT DATA

UNIT SQUARE FOOTAGE	4000 SQ. FT.
BUILDING HEIGHT	1 STORY
ROOF CONSTRUCTION	TILE
TYPE OF CONSTRUCTION	TYPE V-N
OCCUPANCY	A-3
SPRINKLER SYSTEM	NONE
FIRE FLOW	1750 GPM

### NOTE

EXISTING UTILITY LOCATIONS SHOWN HEREIN ARE APPROXIMATE ONLY. IT SHALL BE THE CONTRACTOR'S RESPONSIBILITY TO DETERMINE THE EXACT VERTICAL AND HORIZONTAL LOCATION OF ALL EXISTING UNDERGROUND UTILITIES PRIOR TO COMMENCING CONSTRUCTION. NO REPRESENTATION IS MADE THAT ALL EXISTING UTILITIES ARE SHOWN HEREON. THE ENGINEER ASSUMES NO RESPONSIBILITY FOR UTILITIES NOT SHOWN OR UTILITIES NOT SHOWN IN THEIR PROPER LOCATION.

Call before you Overhead  
1-702-593-6111  
NEADA POWER ENVIRONMENT & SAFETY SERVICES DEPARTMENT

Call before you Dig  
1-800-227-2600  
UNDERGROUND SERVICE (USA)

15/20/99 ROCKY REVISION PLAN DUE TO NEW BLDG. LAYOUT  
16/01/99 SHAW SEC. REDUCE WATER SYSTEM TO 1 1/2" DIA. & 10' DEPTH  
17/01/99 SHAW SEC. 1 1/2" METER, 2" RPPA W/ 2" LANDSCAPE IRRIG. & 2" RPPA

**FRESH LAKES LV, LLC**  
18034 VENTURA BOULEVARD # 402  
ENGINO, CALIFORNIA 91316  
(818)342-4279

**DESIGNING FOR THE FUTURE**  
PLANNERS • CONSULTING ENGINEERS • SURVEYORS  
7548 WEST SAHARA AVENUE • LAS VEGAS, NEVADA 89117 • (702) 748-8415

**MASTER UTILITY PLAN**  
**CITY OF LAS VEGAS**

**LAKES BUSINESS CENTER- LOT 1**

SHEET: SEP-98, AUG-98, AUG-98  
DRAWN BY: FK, DESIGNED BY: FK, CHECKED BY: FK  
PROJECT NO: 561-C390  
SCALE: 1" = 20'

APPROVED FOR CONSTRUCTION 12-29-98  
LAS VEGAS VALLEY WATER DISTRICT DATE 7-20-99

APPROVED FOR CONSTRUCTION 7-20-99  
LAS VEGAS VALLEY WATER DISTRICT DATE 7-20-99

21-60-08  
107-V3040  
Replot

