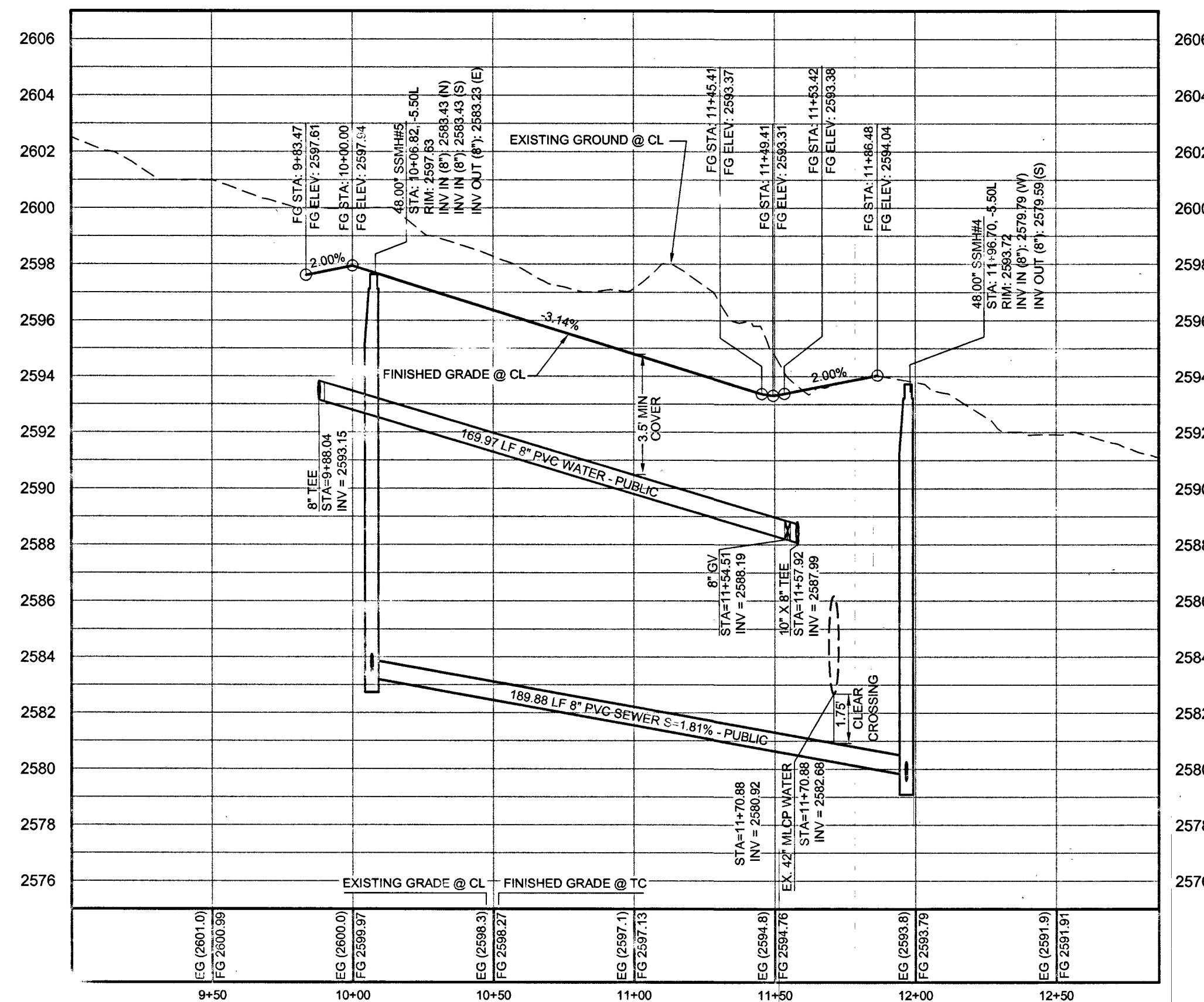
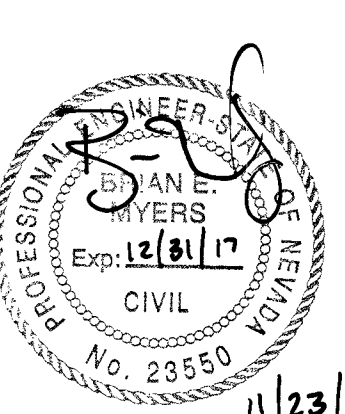


AMBER SUN AVENUE (P.U.E. & PRIVATE ST) - PLAN
STA: 9+00.00 TO 13+00.00



AMBER SUN AVENUE (P.U.E. & PUBLIC) - PROFILE
STA: 9+00.00 TO 13+00.00
SCALE: 1"=40' HORIZONTAL; 1"=4' VERTICAL

CONTROLLED LOW STRENGTH MATERIAL (CLSM)
 PROTECT WATERLINES IN PLACE, WHEREVER A WATERLINE IS ABOVE A STORM DRAIN OR SEWER WHERE COMPACTION REQUIREMENTS UNDER A WATERLINE CANNOT BE MET, BACKFILL TRENCH WITH CLASS II CONTROLLED LOW STRENGTH MATERIAL (CLSM) TO THE SPRINGLINE OF THE WATERLINE. THIS REQUIREMENT IS FOR STRUCTURAL SUPPORT ONLY. ADDITIONAL HEALTH REGULATIONS MAY APPLY PER UDACS 2.22.



FOR ONLY 11/23/16

GEOTECHNICAL
 GEO TEK RESIDENTIAL, LLC
 6835 SOUTH ESCONCADO ST., SUITE B
 LAS VEGAS, NV 89119
 (702) 897-1424
 REPORT NO: 12589-LVR
 DATE: 09/30/2015

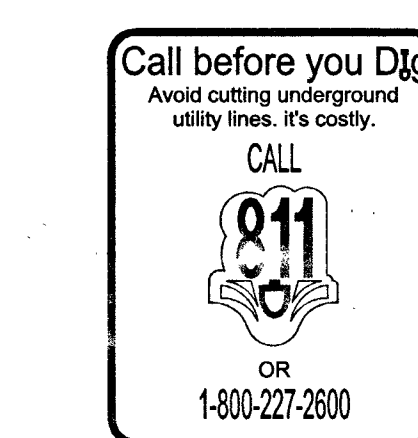
UTILITY DISCLAIMER
 EXISTING UTILITY LOCATIONS SHOWN HEREIN ARE APPROXIMATE ONLY. IT SHALL BE THE CONTRACTOR'S RESPONSIBILITY TO DETERMINE THE EXACT VERTICAL AND HORIZONTAL LOCATION OF ALL EXISTING UNDERGROUND UTILITIES PRIOR TO COMMENCING CONSTRUCTION. NO REPRESENTATION IS MADE THAT ALL EXISTING UTILITIES ARE SHOWN HEREON. THE ENGINEER ASSUMES NO RESPONSIBILITY FOR UTILITIES NOT SHOWN OR UTILITIES NOT SHOWN IN THEIR EXISTING LOCATIONS.

PRIVATE STREET EASEMENTS PUBLIC SEWER EASEMENT
 ALL PRIVATE STREETS ARE PUBLIC UTILITY EASEMENTS (PUE) AND PUBLIC DRAINAGE EASEMENTS TO BE PRIVATELY MAINTAINED BY THE HOME OWNERS ASSOCIATION (HOA).

LINE AND CURVE DATA
 FOR LINE AND CURVE DATA TABLES, SEE THE TRAFFIC AND HORIZONTAL CONTROL PLAN SHEETS FOR THIS PROJECT.

PROFILE NOTES
 ADD 2500 FEET TO ALL GRADE TAGS TO GET ACTUAL ELEVATION.
 ALL PRIVATE STREETS AND DRAINAGE EASEMENTS ARE TO BE PRIVATELY OWNED AND MAINTAINED BY THE HOMEOWNERS ASSOCIATION (H.O.A.).
 ALL WORK TO BE PERFORMED OUTSIDE OF THE PROJECT BOUNDARY AND ON PRIVATE PROPERTY SHALL NOT BE PERFORMED UNTIL WRITTEN PERMISSION AND EASEMENTS HAVE BEEN OBTAINED FROM THE OFFSITE OWNER AND GIVEN TO GOVERNING ENTITY.

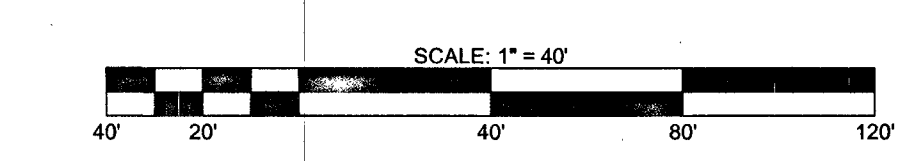
BENCHMARK
 CLV BM# : 9LV007N4
 RIVET & PLATE TOP OF CURB, SOUTHEAST CORNER OF ALEXANDER & GRAND CANYON
 752.642 m / 2601.16 ft (NAVD 88 DATUM)



WATER MAIN JOINT DEFLECTION NOTE (PVC 4"-24")
 PVC PIPE SHALL BE DEFLECTED AT THE JOINT ONLY. THE MAXIMUM ALLOWABLE DEFLECTION SHALL BE ONE (1) DEGREE PER JOINT WITH A MAXIMUM RADIUS OF CURVATURE OF 1,150 FEET, PER UDACS 2.07.01 AND 2.07.02.
 FOR CHANGES IN DIRECTION EXCEEDING THE MAXIMUM ALLOWABLE JOINT DEFLECTION, FITTING SHALL BE USED.

APPROVED FOR CONSTRUCTION

 LAS VEGAS VALLEY WATER DISTRICT ENGINEERING SERVICES MANAGER
 DATE 02/24/16 PROJECT# 124496
 LVAWD APPROVED FLOW: 2,000 GPM AT 20 PSI RESIDUAL



- CONSTRUCTION NOTES**
- 2" AC PAVEMENT OVER 4" TYPE II BASE (PER GEOTECHNICAL REPORT)
 - 2" AC PAVEMENT OVER 6" TYPE II BASE (PER GEOTECHNICAL REPORT)
 - INSTALL 24" L-TYPE CURB & GUTTER (USD #216)
 - INSTALL 12" X 12" AREA DRAIN (SEE DETAIL "N" ON SHEET GD1)
 - INSTALL SIDEWALK DRAIN (USD #236)
 - SAWCUT NEAT AND MATCH EXISTING AC PAVEMENT
 - INSTALL 4" THICK CONCRETE SIDEWALK (USD #234)
 - INSTALL RESIDENTIAL DRIVEWAY (USD #223)
 - INSTALL RIP RAP (D50 = 6") (THICKNESS = 12")
 - NOT USED
 - INSTALL A-TYPE CURB (USD #219)
 - INSTALL CASE I SIDEWALK RAMP (A = B = 8.0') (USD #235)
 - INSTALL 8" CROSS GUTTER (USD #228)
 - INSTALL CASE I SIDEWALK RAMP (A = 4.5', B = 15.0') (USD #235)
 - INSTALL AUTOMATIC SWING GATES WITH CALL BOX
 - INSTALL 16" X 24" BLOCK WALL OPENING AT PAD GRADE FOR OVERFLOW (SEE DETAIL "M" ON SHEET GD1)
 - INSTALL WROUGHT IRON GATE (SEE DETAIL "Q" ON SHEET GD1)
 - INSTALL DRAINAGE FACILITY (DETAIL "R" ON SHEET GD 1)
 - TRENCH AND BACKFILL AND REPLACE AC (USD #500.3)

REVISED	DATE	BY	CHK
1	11/17	BP	5B

ADAVEN HOMES
 3425 CLIFF SHADOWS PARKWAY, STE #110
 LAS VEGAS, NV 89129
 (702) 365-8588 FAX: ---

TANEY ENGINEERING
 6008 S. JONES BLVD
 LAS VEGAS, NV 89119
 (702) 362-8844 FAX: (702) 362-5233

EST. 2000

GRAND CANYON & ALEXANDER
 A RESIDENTIAL SUBDIVISION
 AMBER SUN AVENUE
 PLAN AND PROFILE

DATE: 8/17/2016
 SCALE: ---
 JOB NO: ADV-015-012
 DESIGNED BY: BP CHECKED BY: BM
 SHEET NAME: PP2
 SHEET NUMBER: 7 OF 10
 CC: HTE#16-13915
 CLV 10745043 63688