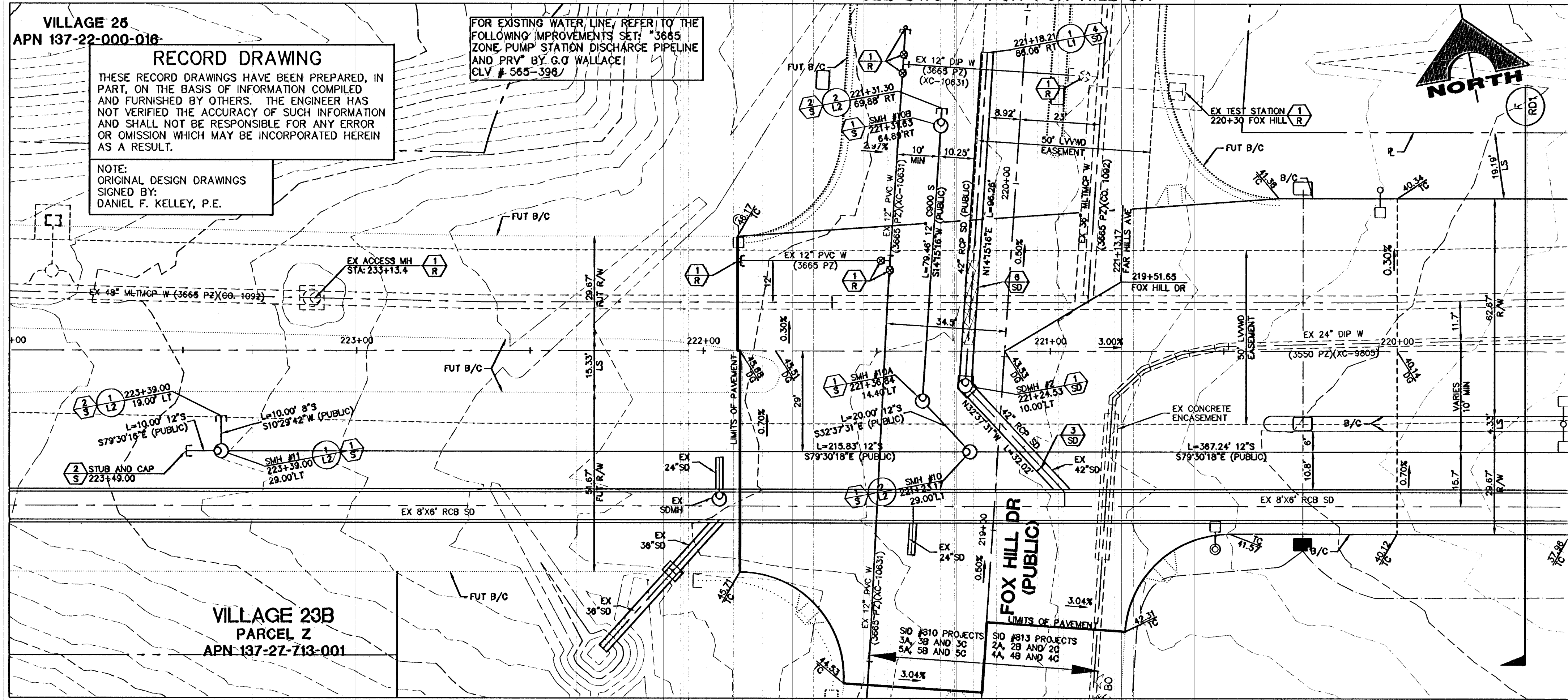


VILLAGE 25
APN 137-22-000-016

RECORD DRAWING
THESE RECORD DRAWINGS HAVE BEEN PREPARED, IN PART, ON THE BASIS OF INFORMATION COMPILED AND FURNISHED BY OTHERS. THE ENGINEER HAS NOT VERIFIED THE ACCURACY OF SUCH INFORMATION AND SHALL NOT BE RESPONSIBLE FOR ANY ERROR OR OMISSION WHICH MAY BE INCORPORATED HEREIN AS A RESULT.
NOTE:
ORIGINAL DESIGN DRAWINGS
SIGNED BY:
DANIEL F. KELLEY, P.E.

FOR EXISTING WATER LINE, REFER TO THE FOLLOWING IMPROVEMENTS SET: "3645 ZONE PUMP STATION DISCHARGE PIPELINE AND PRV" BY G.O WALLACE! CLV # 565-398!

SEE DWG P7 FOR FOX HILL DR



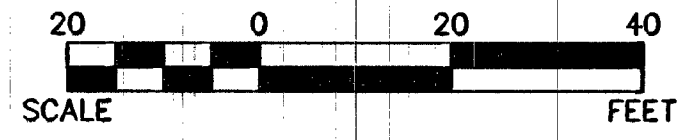
VILLAGE 23B
PARCEL Z
APN 137-27-713-001

ALL WATERLINE CROSSING TRENCH WIDTHS GREATER THAN 6" SHALL HAVE A PIPE SUPPORT DETAIL, SUBMITTED TO LVWD FOR APPROVAL PRIOR TO EXCAVATION.

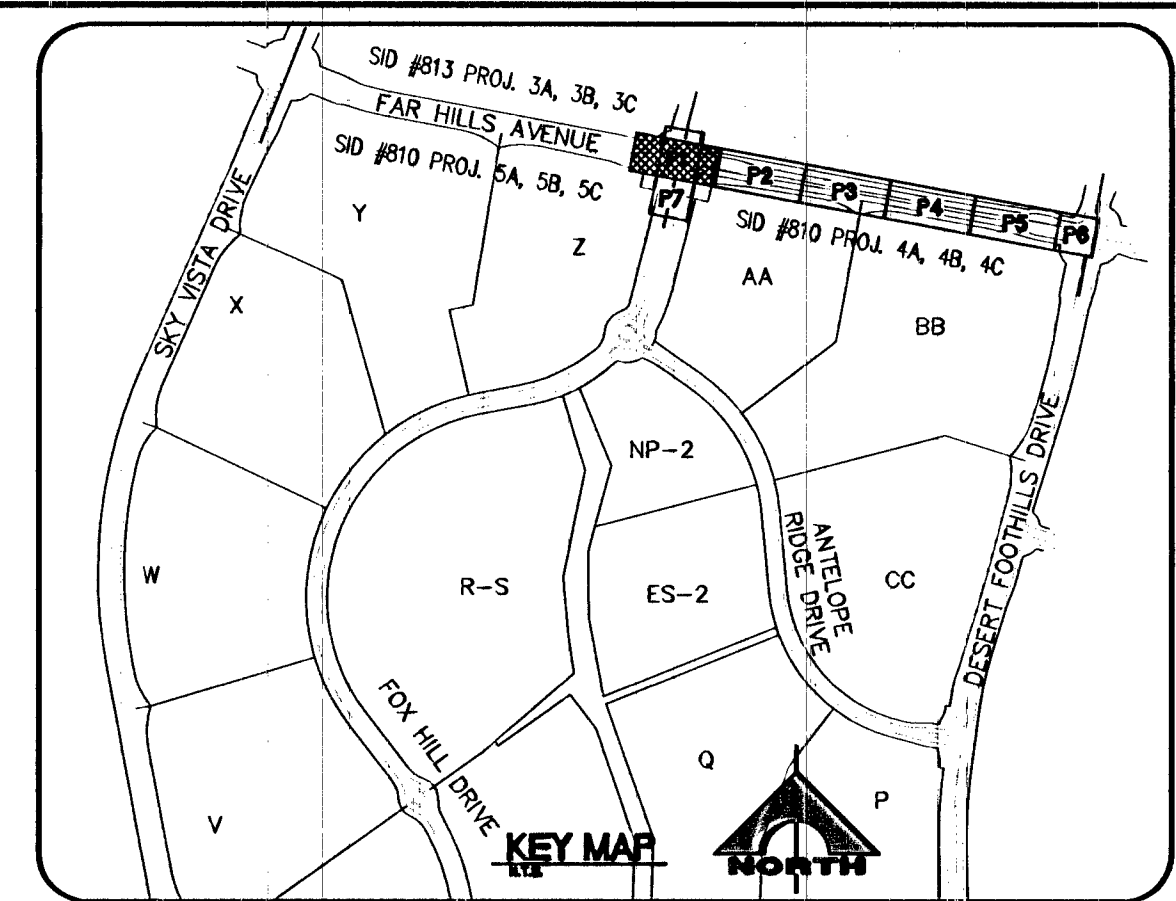
FAR HILLS AVENUE (PUBLIC)

SCALE: HORIZ. 1" = 20'
VERT. 1" = 5'

SID #810 PROJECTS 4A, 4B, 4C, 5A, 5B, 5C



SEWER CONNECTION NOTE:
ONE OR MORE SEGMENTS OF THE DOWNSTREAM SEWER SYSTEM THAT WILL SERVE THIS PROJECT HAS NOT BEEN COMPLETED AND/OR ACCEPTED FOR MAINTENANCE BY THE CITY OF LAS VEGAS. ANY WORK DONE ON THIS PROJECT PRIOR TO THE COMPLETION AND/OR ACCEPTANCE OF THE DOWNSTREAM SEWER SYSTEM(S) SHALL BE DONE AT THE DEVELOPER'S OWN RISK. THE CITY OF LAS VEGAS RESERVES THE RIGHT TO PREVENT THE PHYSICAL CONNECTION OF THIS PROJECT INTO THE DOWNSTREAM SEWER SYSTEM UNTIL ALL SEGMENTS HAVE BEEN COMPLETED AND ACCEPTED FOR MAINTENANCE, OR UNTIL SUCH TIME AS THEY ARE DEEMED AVAILABLE FOR SERVICE.



EXISTING UTILITY NOTE:
EXISTING UTILITIES SHOWN HEREIN ARE APPROXIMATE ONLY AND MAY NOT SHOW ALL EXISTING FACILITIES WITHIN THE PROJECT AREA. CONTRACTOR MUST FIELD VERIFY AND POTHOLE EXISTING UTILITIES WITHIN THE PROJECT AREA PRIOR TO BEGINNING CONSTRUCTION. ALL EXISTING UTILITIES MUST BE PROTECTED IN PLACE DURING CONSTRUCTION UNLESS OTHERWISE NOTED ON DRAWINGS. CONTACT UTILITY COMPANIES AT LEAST 24 HOURS PRIOR TO INTERRUPTION OF SERVICE.

STRUCTURE NOTE:
MANHOLE RIM ELEVATIONS ARE PROVIDED FOR ESTIMATING PURPOSES ONLY. ALL MANHOLE RIMS AND COVERS MUST BE ADJUSTED TO MATCH FINISH GRADE AT TIME OF CONSTRUCTION.

ROADWAY CONSTRUCTION NOTES:
1 VERIFY LOCATION AND ELEVATION OF EXISTING IMPROVEMENTS AND ADJUST TO GRADE. WATER VALVES TO REMAIN ACCESSIBLE AT ALL TIMES.

- WATER CONSTRUCTION NOTES:**
- 1 INSTALL 1-1/2" WATER METER AND 1-1/2" RPPA PER UDACS PLATES 4 AND 8
 - 2 INSTALL CAP W/ 2" BLOW-OFF ASSEMBLY PER UDACS PL. 36
 - 3 INSTALL FIRE HYDRANT PER UDACS PLATES 40 OR 41 (AS APPLICABLE PER PROFILE)
 - 4 PROTECT EX FO PB AND SPLICE PIT, AND ADJUST PER DTL 9, DWG D1
 - 5 INSTALL 24"x8" TAPPING SLEEVE W/ 6" TAPPING VALVE PER UDACS 2.24.01(B) AND UDACS PLATES 34, 35 AND 39
 - 6 INSTALL 45° BEND PER UDACS PL. 31
 - 7 REMOVE CAP AND BLOWOFF PER UDACS PL. 36 AND CONNECT TO EX WATER LINE (CONTRACTOR TO VERIFY SIZE, INVERT AND LOCATION OF EX WATER PRIOR TO CONSTRUCTION)

- SEWER CONSTRUCTION NOTES:**
- 1 INSTALL SEWER MANHOLE PER DCS STD. DWG. 1A AND 1B
 - 2 STUB AND CAP SEWER PIPE PER DTL 4, DWG D1
 - 3 REMOVE PLUG AND CONNECT TO EX SEWER LINE (CONTRACTOR TO VERIFY SIZE, INVERT AND LOCATION OF EX SEWER PRIOR TO CONSTRUCTION)
 - 4 ELASTOMERIC JOINT SEALANT TO BE INSTALLED AT ALL MANHOLE JOINTS.
 - 5 INSTALL LATERAL CONNECTION PER DCS STD. DWG. 23
 - 6 INSTALL CORROSION PROTECTION PER DCS SECTION 2.2.101a

- STORM DRAIN CONSTRUCTION NOTES:**
- 1 INSTALL TYPE III MANHOLE PER USD DWG. NO. 408
 - 2 INSTALL TYPE "CM2" DROP INLET PER USD DWG. NO. 412.1 AND 421
 - 3 REMOVE PLUG AND CONNECT TO EX STORM DRAIN LINE (CONTRACTOR TO VERIFY SIZE, INVERT AND LOCATION OF EX STORM DRAIN PRIOR TO CONSTRUCTION)
 - 4 INSTALL TEMPORARY PLUG AND CAP
 - 5 USE MECHANICAL WATER STOPS, CENTER BULB, OR FLAT STRIP TO PROVIDE WATER-TIGHT JOINTS OF STRUCTURE (VINYLEX, GREENSTREAK PLASTIC PRODUCTS, OR APPROVED EQUAL). SEAL BETWEEN WALLS AND ROOF TO BE KENT SEAL, OR APPROVED EQUAL. PROVIDE WATER-TIGHT JOINTS TO STRUCTURE CONNECTION.
 - 6 INSTALL STORM DRAIN WITH WATER-TIGHT JOINTS USING LVWD APPROVED INTERNAL ELASTOMERIC JOINT SEALANT PER UDACS SECTION 2.22.02 D.2 LVWD TO SUPERSEDE APPLICATION OF SEALANT.
 - 7 CONTROLLED LOW STRENGTH MATERIAL (CLSM) WHEREVER A WATERLINE IS BELOW A STORM DRAIN/SEWER LINE, THE TRENCH SHALL BE BACKFILLED WITH TYPE I CLSM TO THE SPRING LINE OF THE STORM DRAIN/SEWER

- IRRIGATION CONSTRUCTION NOTES:**
- 1 BANK "A": 1-6" & 2-4" SCH 40 PVC PER SIS DWG. NO. U-18
 - 2 BANK "B": 2-4" SCH 40 PVC PER SIS DWG. NO. U-18

BENCHMARK

BM #	DESCRIPTION	NAVD 88 DATUM	NAVD 88 DATUM
SLV09-34NE6	RIVET AND PLATE IN TOP OF CURB @ NORTHEAST CORNER OF DESERT FOOTHILLS AND ALTA DRIVE	3304.45 (FEET)	1007.197 (METERS)

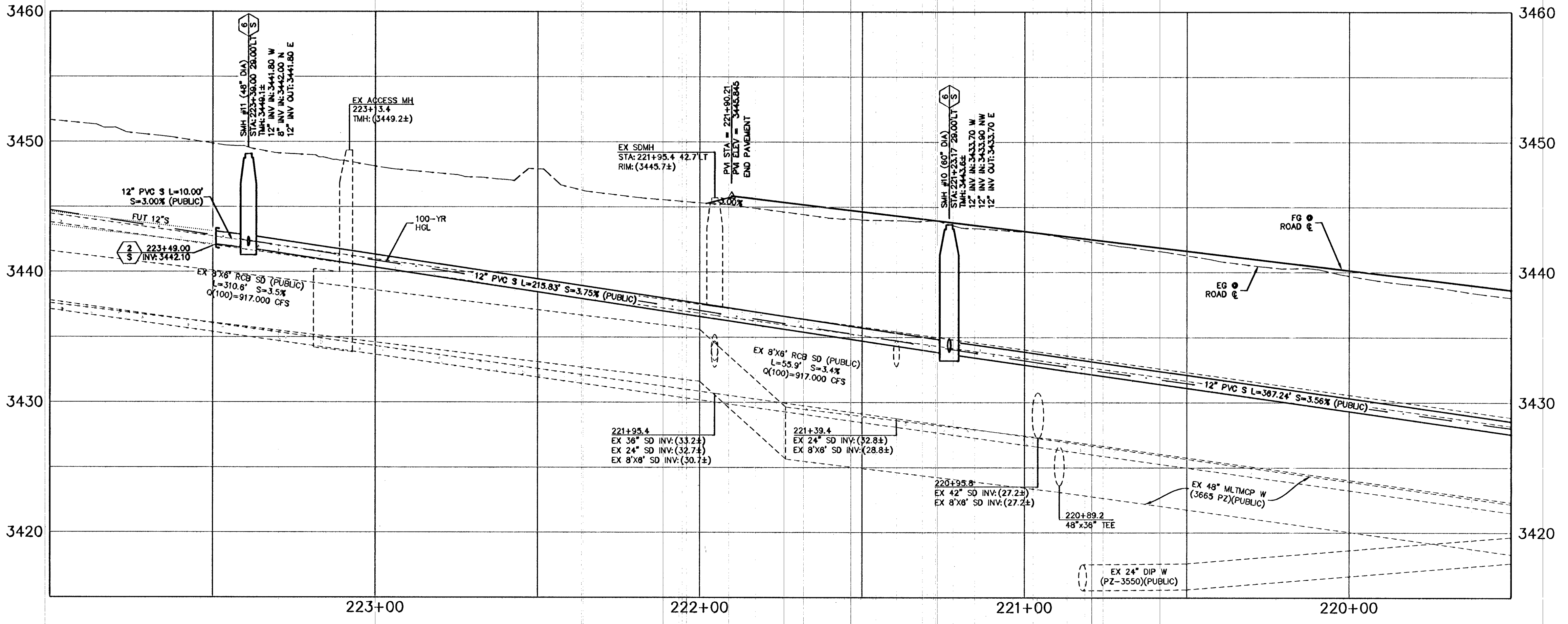
NOTE
THIS SET OF DRAWINGS IS BASED UPON NAVD 88 DATUM. PREVIOUS DRAWINGS MAY BE BASED ON OTHER DATUM. CARE SHOULD BE OBSERVED WHEN UTILIZING THIS SET OF DRAWINGS.

BASIS OF BEARINGS
NORTH 89°45'05" EAST BEING THE SOUTH LINE OF THE SOUTHWEST QUARTER (SW 1/4) OF SECTION 35, TOWNSHIP 20 SOUTH, RANGE 59 EAST, M.D.M., AS SHOWN BY MAP ON FILE IN FILE #1, PAGE 28 OF PARCEL MAPS IN THE CLARK COUNTY RECORDER'S OFFICE, CLARK COUNTY, NEVADA.

APPROVED FOR CONSTRUCTION
LAS VEGAS VALLEY WATER DISTRICT ENGINEERING SERVICES MANAGER
PROJECT NO. 122068 DATE:

Call before you Dig
Avoid cutting into underground utility lines. It's costly. YOU DO OVERHEAD.

FAST
Call before you UnderGround.
1-800-277-2600
1-702-227-2929
1-702-432-5300



PROJECT NO. 62023B-205
DESIGN: MICHAEL FONG
CHECK: MICHAEL FONG
PLOT DATE: 04-02-15
PLOT TIME: 13:35:00

G.C. WALLACE COMPANIES
ENGINEERS | PLANNERS | SURVEYORS
1555 S. RAINBOW BOULEVARD - LAS VEGAS, NV 89146
T: 702.804.2000 - F: 702.804.2299 - G: WALLACE.COM
LAS VEGAS, MESAQUITE

THE HOWARD HUGHES COMPANY, LLC
VILLAGE 23B
FAR HILLS AVENUE IMPROVEMENTS - PHASE 1
DESERT FOOTHILLS DRIVE TO FOX HILL DRIVE
UTILITY PLAN AND PROFILE 1

DRAWING P1
8 OF 29 SHTS