

DISCLAIMER NOTE:

UTILITY LOCATIONS SHOWN HEREON ARE APPROXIMATE ONLY. IT SHALL BE THE CONTRACTOR'S RESPONSIBILITY TO DETERMINE THE EXACT HORIZONTAL AND VERTICAL LOCATION OF ALL EXISTING UNDERGROUND OR OVERHEAD UTILITIES PRIOR TO COMMENCING CONSTRUCTION. NO REPRESENTATION IS MADE THAT ALL EXISTING UTILITIES ARE SHOWN HEREON. THE ENGINEER ASSUMES NO RESPONSIBILITY FOR UTILITIES NOT SHOWN OR UTILITIES NOT SHOWN IN THEIR PROPER LOCATION. CONTRACTOR TO NOTIFY ENGINEER OF ANY CHANGES OR DISCREPANCIES.

Call before you Dig
Avoid overhead power line contact. It's costly.
Call before you Overhead
1-702-227-2929
Nevada Power
Environment and Safety
Services Department

BENCHMARK

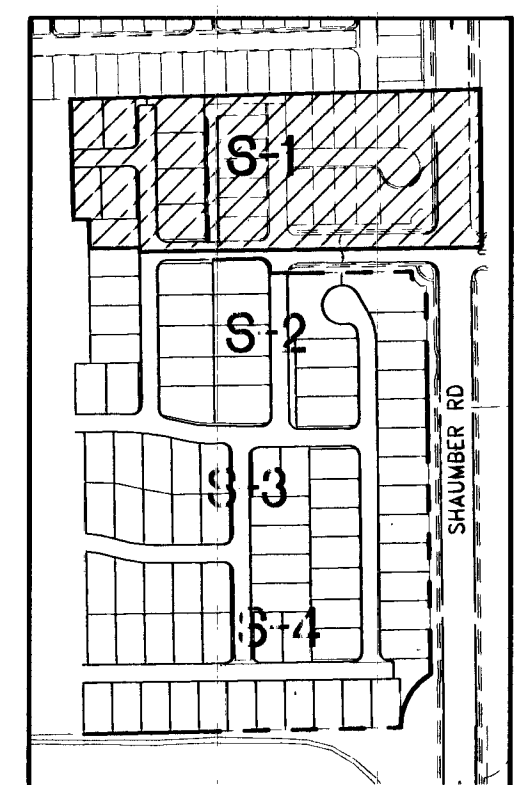
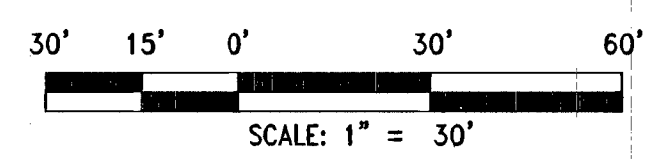
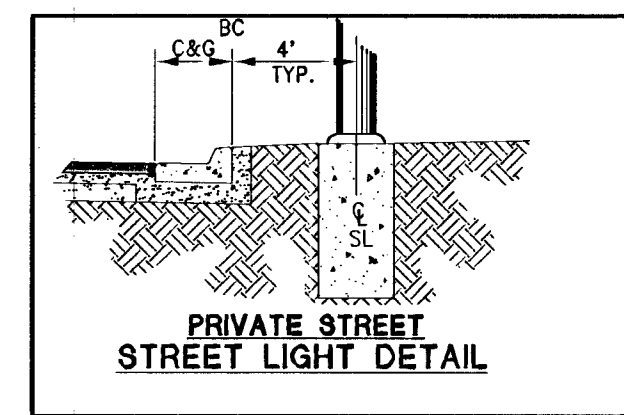
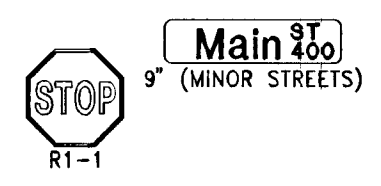
PROJECT DATUM: NORTH AMERICAN VERTICAL DATUM OF 1988 (NAVD88)
CITY OF LAS VEGAS BENCHMARK: CLV BLV99
NAVD88 ELEVATION: 871.971 METERS (2860.79 FEET)
RIVET AND PLATE IN CONCRETE CYLINDER AT THE NORTHWEST CORNER OF HUALAPAI WAY AND FARM ROAD

BASIS OF BEARINGS

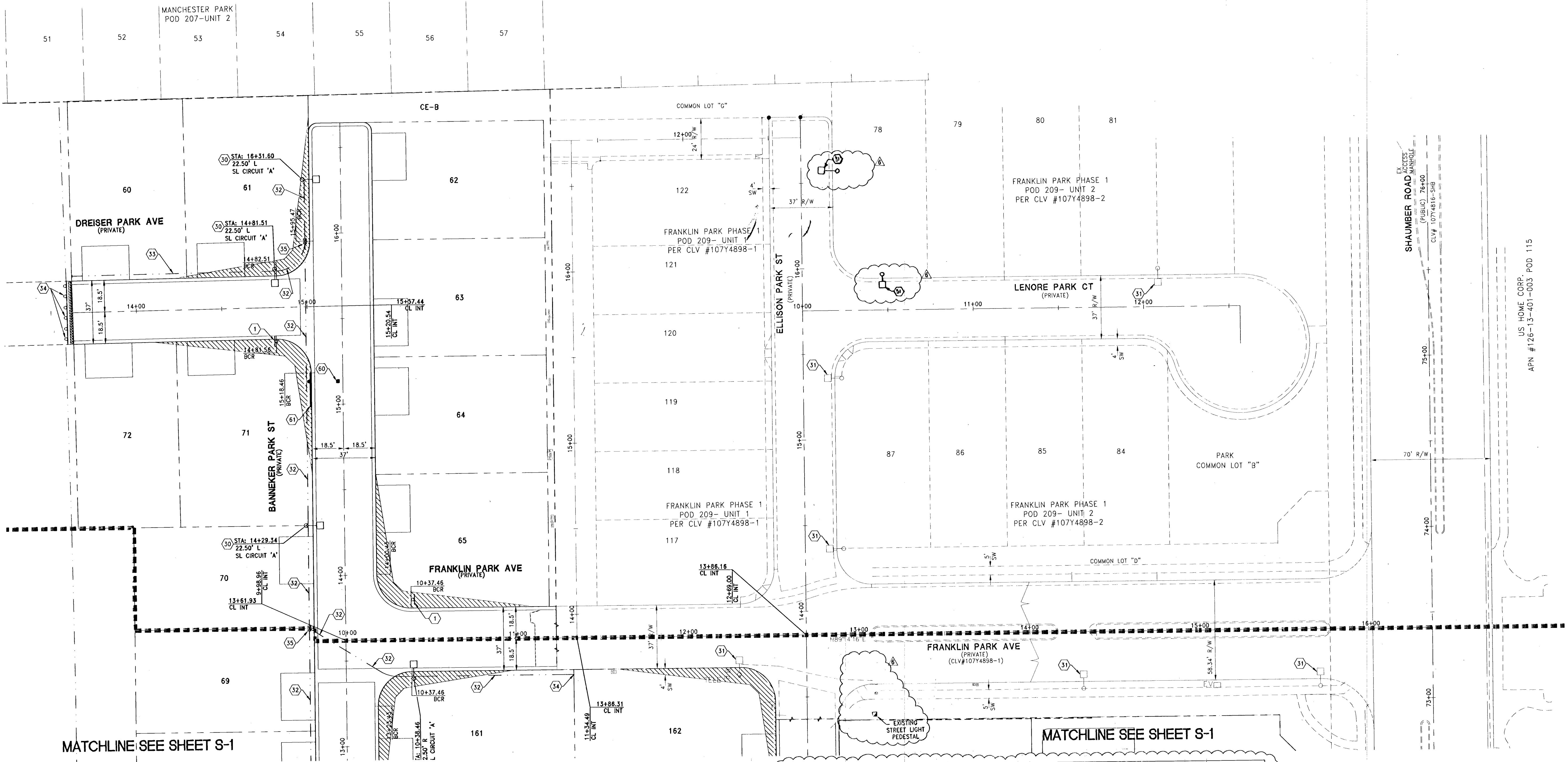
SOUTH 0°19'04" EAST, BEING THE BEARING OF THE EAST LINE OF THE SOUTHEAST QUARTER (SE 1/4) OF SECTION 13, TOWNSHIP 19 SOUTH, RANGE 59 EAST, M.D.M., CLARK COUNTY, NEVADA.

TRAFFIC CONSTRUCTION NOTES

- SIGNS**
- (1) - INSTALL 1'-30" R1-1 STOP SIGN AND 2'-9" STREET NAME SIGNS PER CCAUSD No. 250. NOTE: STREETS ARE PRIVATE. STREET SIGN SHALL BE A BROWN BACKGROUND WITH WHITE LETTERS AND ADDITIONAL LETTERING STATING "PRIVATELY MAINTAINED" IN LOWER RIGHT HAND CORNER OF SIGN.
 - (2) - INSTALL TYPE IIIA END OF ROAD BARRICADES PER CCAUSD No. 601 (2 OF 2)
- STREETLIGHTS**
- (30) - INSTALL PRIVATE STREET LIGHT
 - (31) - EXISTING PRIVATE STREET LIGHT
 - (32) - INSTALL 1-1/4" PVC CONDUIT WITH 2-No. 4 AND 1-No. 8 GND THW
 - (33) - INSTALL 1-1/4" PVC CONDUIT WITH CAP AND PULL STRING
 - (34) - INSTALL TYPE IIIA END OF ROAD BARRICADES PER CCAUSD No. 601 (2 OF 2)
 - (35) - INSTALL No. 3-1/2 PULLBOX PER CCAUSD No. 326
- PAVEMENT MARKINGS AND MISCELLANEOUS**
- (60) - INSTALL BLUE COLORED REFLECTIVE RAISED PAVEMENT MARKERS ADJACENT TO THE FIRE HYDRANT ON ALL IMPROVED FIRE APPARATUS ACCESS ROADWAYS WITH HARD SURFACE, INCLUDING BOTH PUBLIC AND PRIVATE ROADS, OR FIRE LANES
 - (61) - PAINT CURB RED IN FRONT OF FIRE HYDRANT
 - (36) - INSTALL 1-1/4" PVC CONDUIT WITH PULL STRING ONLY



KEY MAP
NTS



STREETLIGHT CIRCUIT CAPACITY VERIFICATION FOR PRIVATE CIRCUIT EXISTING 'A'

CAPACITY CALCULATIONS

1	CIRCUIT CAPACITY:	60	AMPS
2	MAXIMUM CONTINUOUS CURRENT DRAW (80%)	48	AMPS
3	EXISTING CIRCUIT LOAD (ENTER 0 IF NEW)	3	AMPS
4	AVAILABLE (2 MINUS 3)	45	AMPS
PROPOSED LUMINAIRE LOAD TO CIRCUIT:			
5	6 NUMBER OF 100 WATT STILTS @ 0.5 AMPS/EA	3	AMPS
6	0 NUMBER OF 150 WATT STILTS @ 0.75 AMPS/EA	0	AMPS
7	0 NUMBER OF 250 WATT STILTS @ 1.25 AMPS/EA	0	AMPS
8	TOTAL PROPOSED ADDITIONAL LOAD (5+6+7)	3	AMPS
REMAINING AVAILABLE LOAD (4 MINUS 8)		42	AMPS

STREETLIGHT CIRCUIT CAPACITY VERIFICATION FOR PRIVATE CIRCUIT EXISTING 'B'

CAPACITY CALCULATIONS

1	CIRCUIT CAPACITY:	60	AMPS
2	MAXIMUM CONTINUOUS CURRENT DRAW (80%)	48	AMPS
3	EXISTING CIRCUIT LOAD (ENTER 0 IF NEW)	1	AMPS
4	AVAILABLE (2 MINUS 3)	47	AMPS
PROPOSED LUMINAIRE LOAD TO CIRCUIT:			
5	20 NUMBER OF 100 WATT STILTS @ 0.5 AMPS/EA	10	AMPS
6	0 NUMBER OF 150 WATT STILTS @ 0.75 AMPS/EA	0	AMPS
7	0 NUMBER OF 250 WATT STILTS @ 1.25 AMPS/EA	0	AMPS
8	TOTAL PROPOSED ADDITIONAL LOAD (5+6+7)	10	AMPS
REMAINING AVAILABLE LOAD (4 MINUS 8)		37	AMPS

DATE: FEBRUER 08, 2014
HORIZ. SCALE: 1"=50'
VERT. SCALE: 1"=4'
DRAWN BY: DP
DESIGNED BY: SC
CHECKED BY: JIL
APPROVED BY: JIL
PROJECT #: 3110.0003

TOLL NORTH, LLC
1140 TOWN CENTER DRIVE SUITE 250
LAS VEGAS, NV 89144
PHONE: 702-245-3880 FAX: 702-245-9610

RCI Engineering
2821 S. HIGHWAY DRIVE SUITE 800, Las Vegas, NV 89109
PHONE: 702-453-0060 FAX: 702-453-0801

NEVADA

PROFESSIONAL ENGINEER
JOHN I. LAND
Exp. 12/31/2015
CIVIL
No. 16441

2/8/2014

DRAWING
S-1
SHT 35 OF 38
CLV DRAWING NUMBER
145203
10274898-2A
CLV DRAWING

U:\3110_003_Foundation\CLV\PS\PHASE II UNIT 1\31101-501.dwg Jland 2/08/14 1:51pm