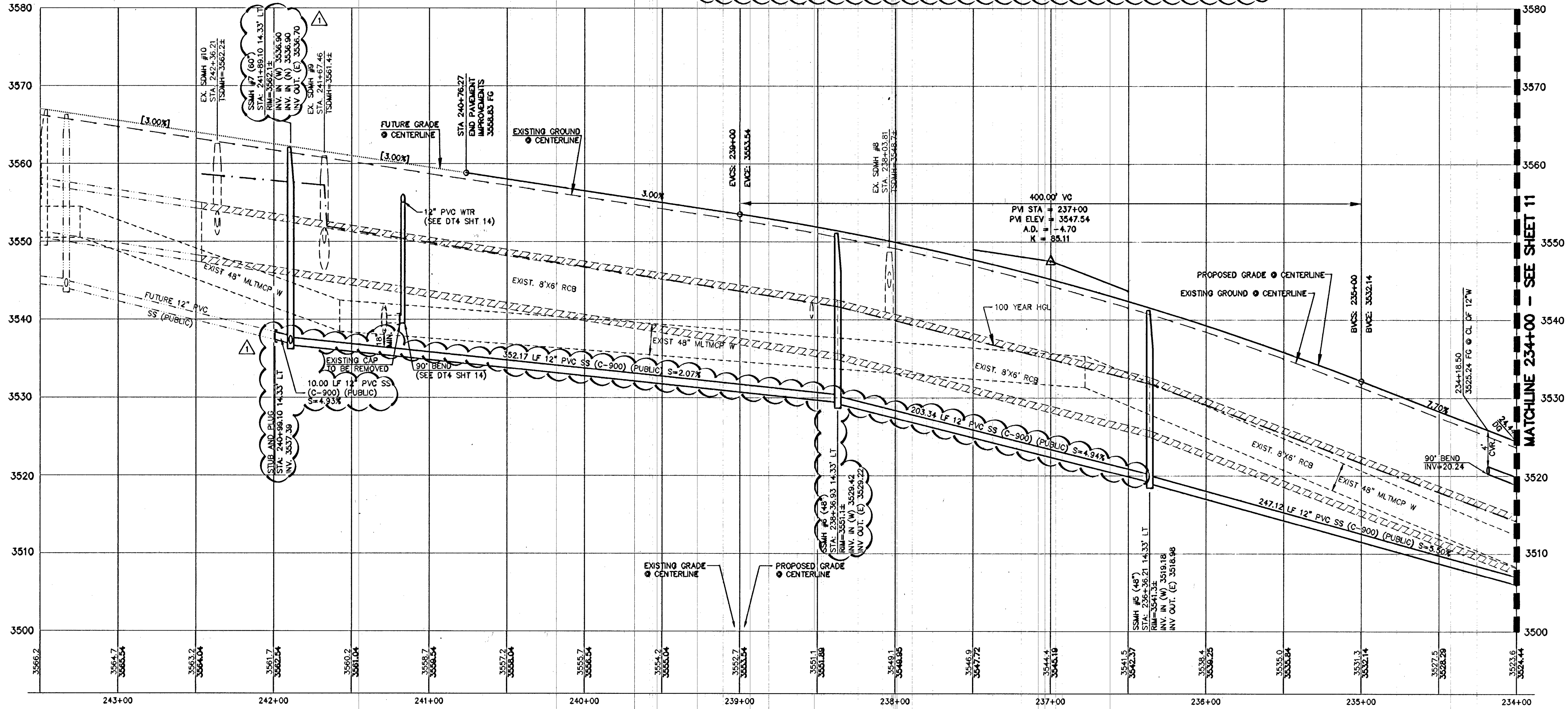
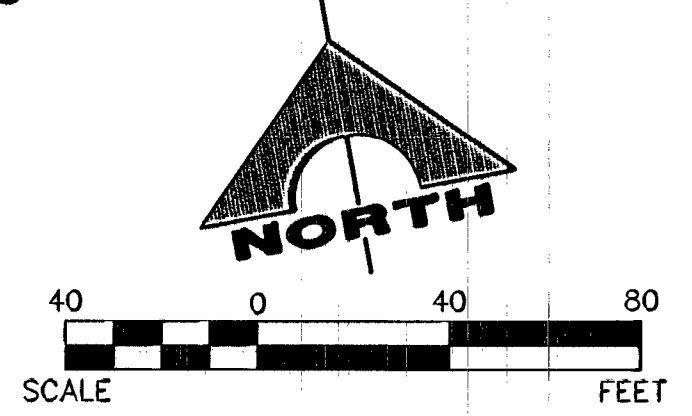


- ### CONSTRUCTION NOTES
- WATER**
- 1. INSTALL FIRE HYDRANT ASSEMBLY (40) UDACS
 - 2. NOT USED
 - 3. INSTALL 12" GATE VALVE & BOX WITH 1" RADIUS CONCRETE COLLAR (30) UDACS
 - 4. REMOVE CAP & B.O. AND CONNECT TO EXISTING WATER LINE (CONTRACTOR TO VERIFY SIZE, INVERT, AND LOCATION OF EXISTING WATER LINE) (36) UDACS
 - 5. INSTALL CAP W/ 2" BLOW-OFF ASSEMBLY (36) UDACS
 - 6. INSTALL (VERTICAL) 45° BEND (31) UDACS
 - 7. INSTALL 90° BEND (31) UDACS
 - 8. INSTALL 12"x12" TEE (31) UDACS
- SEWER**
- 1. INSTALL 48" DIA. SEWER MANHOLE (S0 1-8) PCSWCS
 - 2. INSTALL 60" DIA. SEWER MANHOLE (S0 1-8) PCSWCS
 - 3. REMOVE EX. PLUG & CONNECT TO EX. SEWER LINE (CONTRACTOR TO VERIFY SIZE, INVERT, AND LOCATION OF EXISTING SEWER LINE PRIOR TO CONSTRUCTION)
 - 4. INSTALL TEMPORARY PLUG AND CAP
- STORM DRAIN**
- 1. INSTALL TYPE "CM2" DROP INLET (412.1) (421) USD
 - 2. CONNECT TO EXISTING STORM DRAIN LINE (CONTRACTOR TO VERIFY SIZE, INVERT, AND LOCATION OF EXISTING STORM DRAIN LINE)
 - 3. INSTALL TEMPORARY PLUG AND CAP
 - 4. CAST-IN-PLACE MONOLITHIC POUR WITH WATER STOP BETWEEN SLAB AND WALLS. BASE, WALLS AND TOP TO BE CONSTRUCTED WITH MECHANICAL WATER STOPS, CENTER BULB OR FLAT STRIP (VINYLEX, GREENSTREAK PLASTIC PRODUCTS OR APPROVED EQUAL).
- IRRIGATION**
- 1. BANK "A": 1-8" AND 2-4" SCHD. 40 PVC (U-18) SS
 - 2. BANK "B": 2-4" SCHD. 40 PVC (U-18) SS
- ROADWAY**
- 1. VERIFY LOCATION AND ELEVATION OF EXISTING IMPROVEMENTS AND ADJUST TO GRADE. WATER VALVES ARE TO REMAIN ACCESSIBLE AT ALL TIMES.

CONTRACTOR NOTE:
 ALL EXISTING UTILITY LOCATIONS SHOWN HEREON ARE APPROXIMATE ONLY. IT SHALL BE THE CONTRACTOR'S RESPONSIBILITY TO DETERMINE THE EXACT VERTICAL AND HORIZONTAL LOCATION OF ALL EXISTING UNDERGROUND UTILITIES PRIOR TO CONSTRUCTION AND RELOCATE THESE UTILITIES AS NECESSARY. NO REPRESENTATION IS MADE THAT ALL UTILITIES ARE SHOWN HEREON. THE ENGINEER ASSUMES NO LIABILITY FOR UTILITIES NOT SHOWN OR UTILITIES NOT SHOWN IN THEIR PROPER LOCATIONS.

DEPTH OF COVER:
 MINIMUM 24" COVER PER UDACS SECTION 2.08.04. GRADING MUST BE COMPLETED PRIOR TO WATERLINE INSTALLATION.

ABANDONED VALVE CUT AND CAP
 ALL VALVES TO BE ABANDONED SHALL BE IN THE CLOSED POSITION, UNLESS SHOWN OTHERWISE, BY REMOVING A MINIMUM OF THE TOP 24-INCHES OF THE VALVE BOX, AND THEN FILLING THE BOTTOM OF THE BOX WITH A MINIMUM OF 8-INCHES OF SAND OR TYPE II AGGREGATE BASE. THE REMAINING PORTION OF THE VALVE BOX SHALL BE FILLED WITH CONCRETE HAVING A COMPRESSIVE STRENGTH OF 2,000 PSI. THE LATERAL MUST BE CUT WITHIN ONE FOOT OF THE ABANDONED VALVE, OR AS SHOWN ON PLANS, AND CAPPED. THE CONTRACTOR SHALL CUT THE EXISTING PIPE WHERE SHOWN ON THE DRAWING AND INSTALL A CAP COMPLETE WITH A THRUST BLOCK. WHERE A JOINT OR COUPLING IN THE EXISTING PIPE IS UNCOVERED AT THE CUT AND CAP LOCATIONS, THE INSTALLATION OF A PLUG MAY BE PERMITTED WITH DISTRICT APPROVAL. A CONCRETE THRUST BLOCK SHALL BE INSTALLED AT ALL CAP OR PLUG LOCATIONS IN ACCORDANCE WITH THE PROVISIONS OF UDACS PLATE 31.
 REVISED 11/02/11



- NOTES:**
- SEE MASTER UTILITY PLAN - WATER (SHEET 4) FOR QUANTITIES
 - RESTRAINED JOINTS REQUIRED FROM: STA: 233+75.50 TO 234+18.50

BASIS OF BEARINGS
 NORTH 89°45'05" EAST BEING THE SOUTH LINE OF THE SOUTHWEST QUARTER (SW 1/4) OF SECTION 35, TOWNSHIP 20 SOUTH, RANGE 59 EAST, M.D.M., AS SHOWN BY MAP ON FILE IN FILE 91, PAGE 28 OF PARCEL MAPS IN THE CLARK COUNTY RECORDER'S OFFICE, CLARK COUNTY, NEVADA

BENCHMARK

BM #	DESC.	NAVD 88 DATUM (FEET)	NAVD 88 DATUM (METERS)
CLV BM No. D368 3	U.S.C. & G.S. BRASS DISC SET IN ROCK ON THE EAST SIDE OF CHARLESTON BOULEVARD AND SOUTH OF THE RED ROCK DETENTION BASIN.	3248.71	989.599

APPROVED FOR CONSTRUCTION 1ST APP'D 6/24/14
Tom Wade
 LAS VEGAS VALLEY WATER DISTRICT ENGINEERING SERVICES MANAGER
 PROJECT NO. 122713 DATE: 12/11/14

Call before you Dig

1-800-227-2600

CLARK COUNTY TRAFFIC OPERATIONS
1-702-452-7544

CALL BEFORE YOU DO OVERHEAD

1-702-227-2929

FAST

Call before you UnderGround.

1-702-482-5300

TRUNK AND ARTERIAL SYSTEMS OF TRANSPORTATION

G.C. WALLACE COMPANIES
 ENGINEERS | PLANNERS | SURVEYORS
 6555 S. RAINBOW BLVD., LAS VEGAS, NV 89146
 T: 702.804.2000 F: 702.804.2299 GCWALLACE.COM
 F:\Projects\600\620235-208\DWG\Production\208-10-12_UT.dwg
 mfang
 DATE: 12/11/14
 PROJECT NO. 122713
 DRAWING NO. 12
 JOB NO. 620235-208