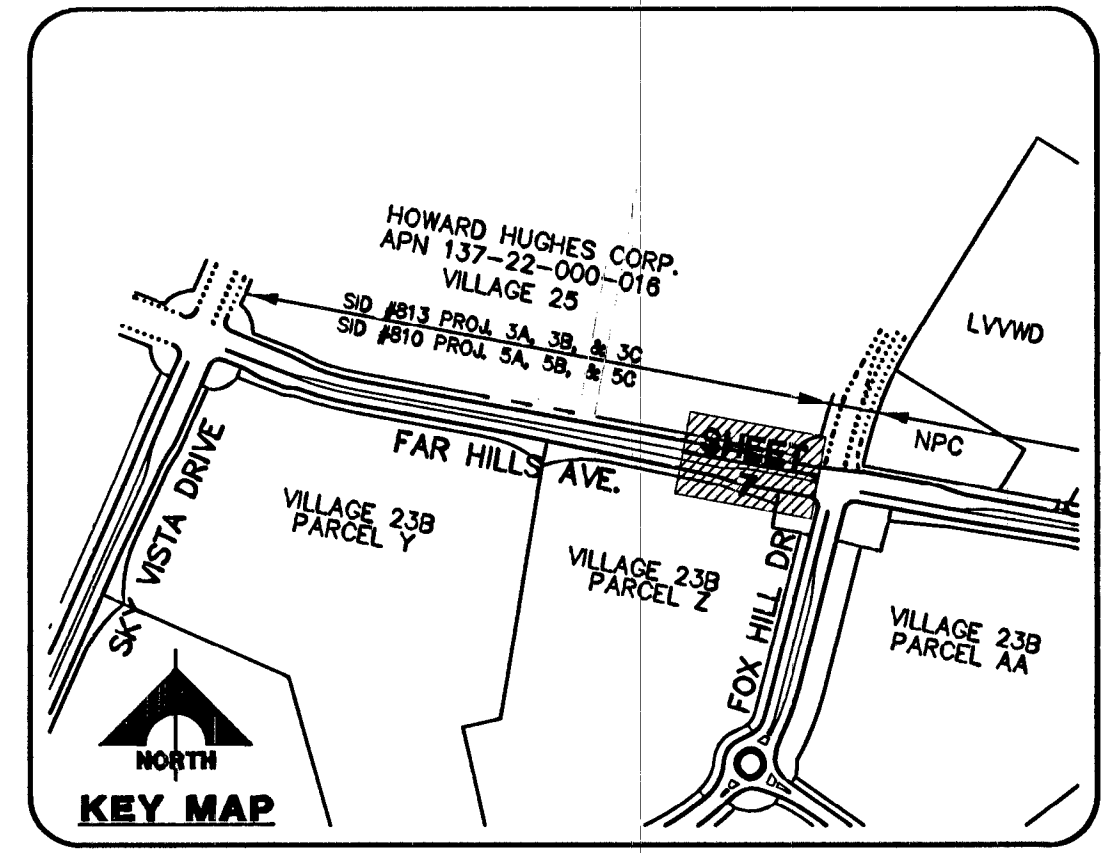
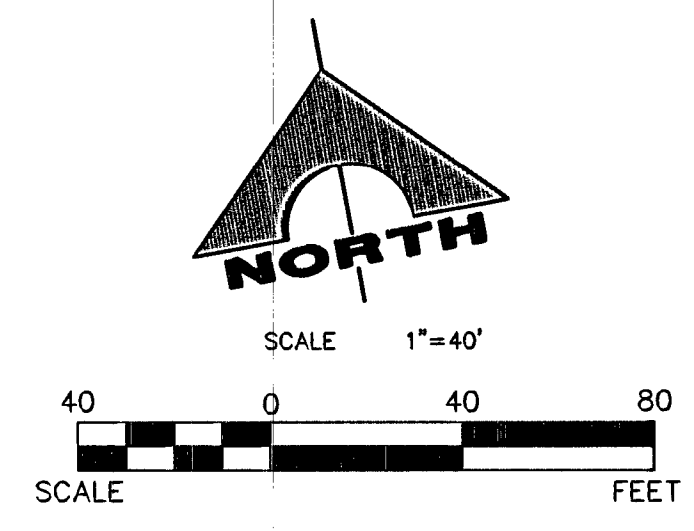


**FAR HILLS AVENUE (PUBLIC) SID #810 PROJECTS 5A, 5B AND 5C**  
SCALE: HORIZ. 1" = 40' VERT. 1" = 8'



- CONSTRUCTION NOTES**
- IMPROVEMENTS**
- 1. INSTALL A.C. PAVEMENT PER STREET SECTIONS, SEE SHEET 14
  - 2. INSTALL "L" TYPE CURB & GUTTER (S-47)
  - 3. INSTALL "A" TYPE ISLAND CURB (S-50)
  - 4. INSTALL CONCRETE BUS TURNOUT (234.1 USD)

**CONTRACTOR NOTE:**

ALL EXISTING UTILITY LOCATIONS SHOWN HEREON ARE APPROXIMATE ONLY. IT SHALL BE THE CONTRACTOR'S RESPONSIBILITY TO DETERMINE THE EXACT VERTICAL AND HORIZONTAL LOCATION OF ALL EXISTING UNDERGROUND UTILITIES PRIOR TO CONSTRUCTION AND RELOCATE THESE UTILITIES AS NECESSARY. NO REPRESENTATION IS MADE THAT ALL UTILITIES ARE SHOWN HEREON. THE ENGINEER ASSUMES NO LIABILITY FOR UTILITIES NOT SHOWN OR UTILITIES NOT SHOWN IN THEIR PROPER LOCATIONS.

**BASIS OF BEARINGS**

NORTH 89°45'05" EAST BEING THE SOUTH LINE OF THE SOUTHWEST QUARTER (SW 1/4) OF SECTION 35, TOWNSHIP 20 SOUTH, RANGE 59 EAST, M.D.M., AS SHOWN BY MAP ON FILE IN FILE 91, PAGE 28 OF PARCEL MAPS IN THE CLARK COUNTY RECORDER'S OFFICE, CLARK COUNTY, NEVADA

**BENCHMARK**

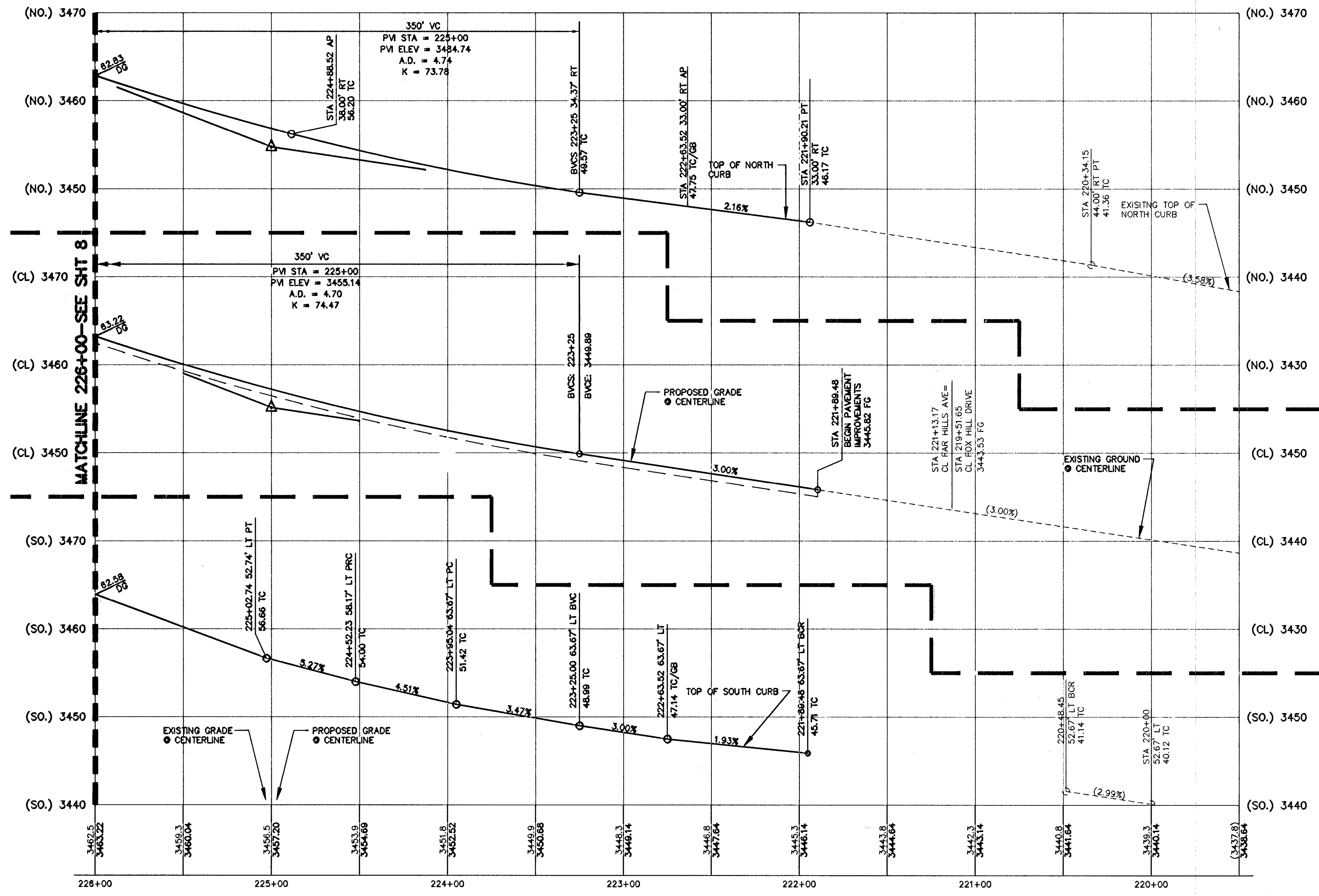
BM #	DESC.	NAVD 88 DATUM (FEET)	NAVD 88 DATUM (METERS)
CLV BM No. D368 3	U.S.C. & G.S. BRASS DISC SET IN ROCK ON THE EAST SIDE OF CHARLESTON BOULEVARD AND SOUTH OF THE RED ROCK DETENTION BASIN.	3246.71	989.599

**LINE TABLE**

NO	LENGTH	DIRECTION
L1	1446.73	N79°30'18"W
L2	73.31	S79°30'18"E
L3	41.74	S79°30'18"E
L4	201.18	S79°30'18"E
L5	205.56	N79°30'18"W
L6	225.05	S78°13'55"E
L7	225.05	N78°13'55"W

**CURVE TABLE**

NO	LENGTH	DELTA	RADIUS	TANGENT
C1	14.35	164°25'00"	5.00	36.54
C2	40.80	15°35'00"	150.00	20.53
C3	57.73	11°01'31"	300.00	28.95
C4	64.39	12°17'54"	300.00	32.32
C5	57.53	10°59'17"	300.00	28.86
C6	50.87	9°42'54"	300.00	25.50



**DRAINAGE CERTIFICATION**

I CERTIFY THAT THE GRADING PLANS ARE IN CONFORMANCE WITH THE APPROVED DRAINAGE STUDY ON FILE AT THE CITY OF LAS VEGAS FOR THIS PROJECT.

*Joshua Johnson* DATE: 5/15/14  
JOSHUA JOHNSON P.E. 15789

Call before you Dig

811

1-800-227-2600

CLARK COUNTY PUBLIC UTILITIES DEPARTMENT

1-702-455-7544

CALL BEFORE YOU DIG

FAST

1-702-227-2929

Call before you UnderGround.

1-702-432-5300

FIREWAY AND ARTERIAL SYSTEM OF TRANSPORTATION

DESIGN: J.M. / P.B.  
DRAWN: M.F. / J.S.  
CHECK: M.F. / J.S.  
ISSUE DATE: 05-09-14  
PLOT DATE: 05-09-14  
PLOT TIME: 14:45:36

DATE: 5/15/14

STATE: NEVADA

CITY: LAS VEGAS

PROJECT: VILLAGE 238 FAR HILLS AVENUE IMPROVEMENTS - PHASE I

FILE: V:\Projects\600\620238-208\DWG\Production\208-07-06\_PP.dwg

BY: jbremer

**G.C. WALLACE COMPANIES**

ENGINEERS | PLANNERS | SURVEYORS

1555 S. PALMWAY BLVD. LAS VEGAS, NV 89146

T: 702.884.2000 F: 702.884.2099 GCWALLACE.COM

**THE HOWARD HUGHES COMPANY, LLC**

VILLAGE 238 FAR HILLS AVENUE IMPROVEMENTS - PHASE I

FAR HILLS AVENUE - GRADING PLAN AND PROFILE

STA. 219+60 TO 226+00

DRAWING 7

H NO. 53053 CLV DRAWING NO. 107V6128-2 7 OF 20 SHEETS