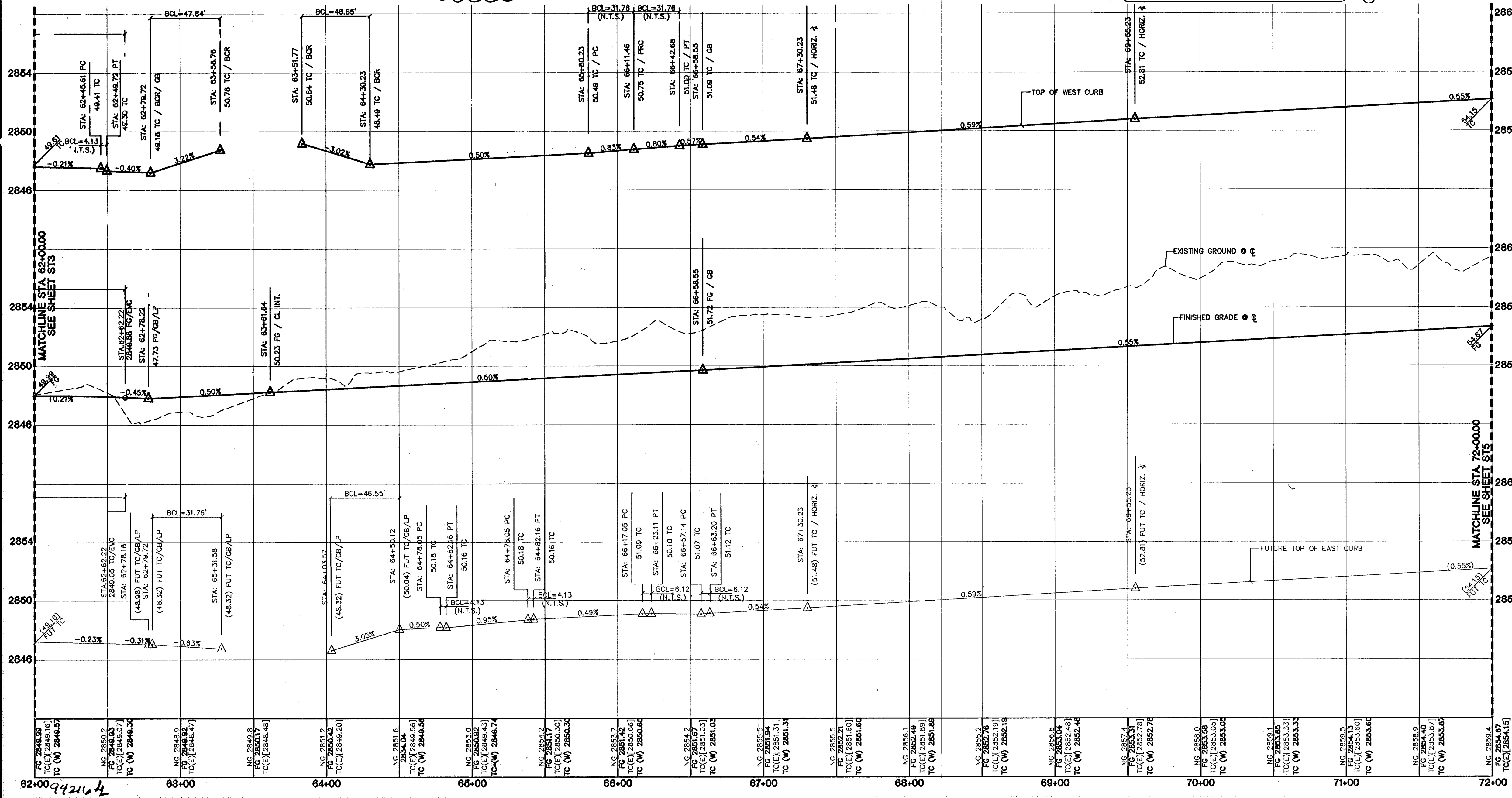
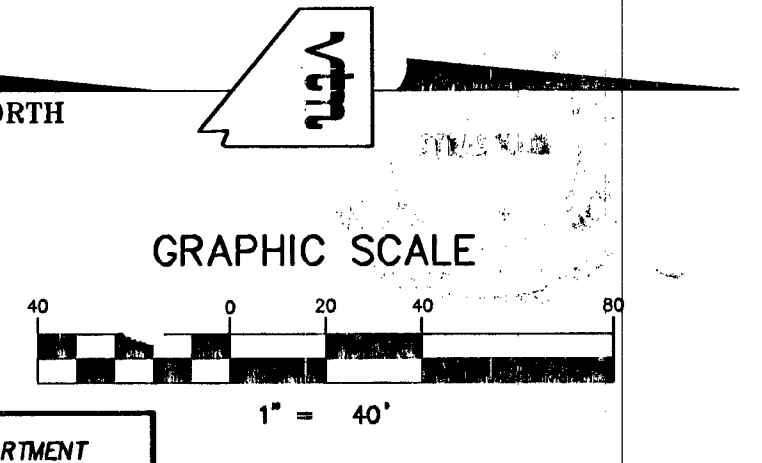


SIDEWALK RAMPS		
NO.	"A"	"B"
4	12.0'	4.5'
5	4.5'	12.0'

INSTALL SIDEWALK RAMPS USING ARMOR TILE TRUNCATED DOWNS OR EQUIVALENT PER CCAUSD NO. 235

**CONTRACTOR NOTE**  
 CONTRACTOR SHALL VERIFY HORIZONTAL AND VERTICAL LOCATION OF EXISTING UTILITIES AND NOTIFY THE DESIGN ENGINEER IMMEDIATELY OF ANY DISCREPANCIES PRIOR TO CONSTRUCTION.

- CONSTRUCTION NOTES**
- (A) CONSTRUCT "L" TYPE CURB & GUTTER PER STD. DWG. NO. 218
  - (B) CONSTRUCT "A" TYPE ISLAND CURB PER STD. DWG. NO. 219
  - (C) ADJUST MAN HOLES TO FINISH GRADE



CLARK COUNTY DEPARTMENT OF DEVELOPMENT SERVICES

Acceptance of plans for filing  
 By: \_\_\_\_\_  
 Acceptance of these plans for filing shall not be construed to be a permit for or an approval of any violation of any of the provisions of the state or county laws and/or specifications. Clark County shall be held free from damages which may result from the construction of the improvements from the engineering design depicted herein.

NOTE: Power poles and/or other existing facilities not in proper location based on proposed improvements shown herein will be re-located at no expense to Clark County.

BACK OF CURB CURVE TABLE				
CURVE	LENGTH	RADIUS	TANGENT	DELTA
C1	4.13'	25.00'	2.07'	9°27'44"
C2	47.84'	30.00'	30.72'	91°21'30"
C3	46.65'	30.00'	29.53'	89°05'51"
C4	3'.78'	100.00'	16.01'	181°14'2"
C5	31.78'	100.00'	16.01'	181°14'2"
C6	74.66'	249.25'	37.51'	17°09'48"
C7	69.54'	250.75'	35.00'	15°33'25"
C8	3.93'	1.25'	INFINITE	180°00'03"
C9	3.93'	1.25'	INFINITE	180°00'00"
C10	47.46'	30.00'	30.34'	90°38'36"
C11	46.55'	30.00'	29.43'	88°54'04"
C12	4.13'	25.00'	2.07'	09°27'44"
C13	6.12'	25.00'	3.08'	14°02'10"

For revision only

PROFESSIONAL ENGINEER - STATE OF NEVADA  
 TODD L. STEADHAM  
 No. 015797  
 CIVIL  
 3/14/14

**CLIFFS EDGE LLC**  
 3455 CLIFF SHADOWS PARKWAY, SUITE 290  
 LAS VEGAS, NEVADA 89129  
 (702) 777-1221

**STREET PLAN & PROFILE**  
 HUALAPAI WAY  
 STA. 62+00.00 TO 72+00.00

**CLIFFS EDGE / PROVIDENCE**  
 HUALAPAI WAY  
 DEER SPRINGS TO GRAND TETON

CITY OF LAS VEGAS, NEVADA

2727 SOUTH RAINBOW BOULEVARD LAS VEGAS, NEVADA 89146-5148  
 PH. (702) 873-7550 FAX (702) 362-2597

nevada CONSULTING ENGINEERS • PLANNERS • LAND SURVEYORS

DRAWN BY: MAR. 03'  
 DESIGNED BY: MAR. 03'  
 CHECKED BY: MAR. 03'  
 PROJECT NO: 1074816-HWY  
 SHEET 974  
 7 OF 29 SHEETS  
 DRAWING NO. 1074816-HWY

EXPIRES 06-30-07

PROFESSIONAL ENGINEER - STATE OF NEVADA  
 DANIEL J. HOOD  
 No. 12811  
 CIVIL  
 7/27/12

I CERTIFY THAT THIS PLAN IS IN CONFORMANCE WITH THE APPROVED DRAINAGE STUDY ON FILE AT CITY OF LAS VEGAS FOR THIS PROJECT.

DANIEL J. HOOD NO. 12811 DATE: 7/27/12

HTE# 06-19169