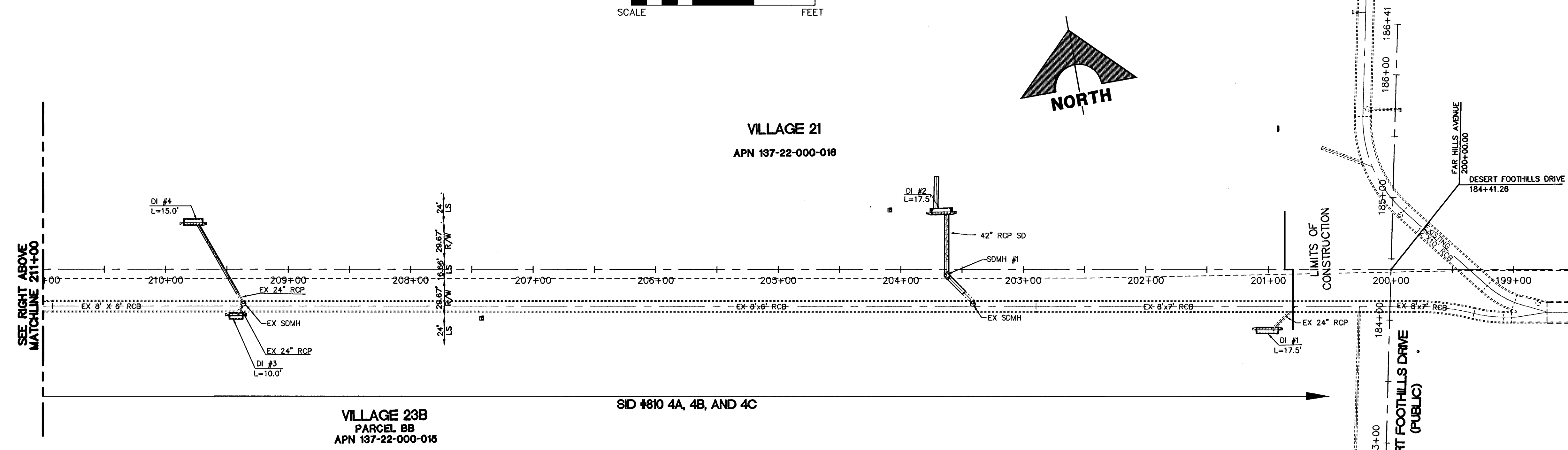
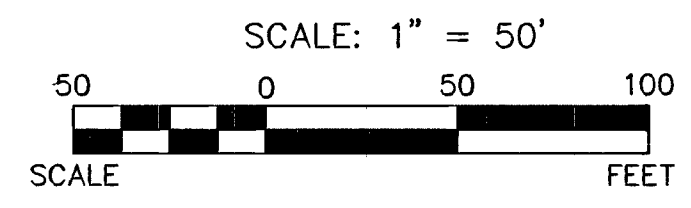


FAR HILLS AVENUE (PUBLIC)



STORM DRAIN QUANTITIES (PUBLIC)

24" RCP	64 LF
42" RCP	242 LF
7.5' TYPE "CM2" DROP INLET	2 EA
10.0' TYPE "CM2" DROP INLET	1 EA
15.0' TYPE "CM2" DROP INLET	1 EA
17.5' TYPE "CM2" DROP INLET	2 EA
TYPE III MANHOLE	2 EA

Call before you Dig

Avoid cutting underground utility lines. It's costly.

Call 811

OR

1-800-227-2600

CLARK COUNTY TRAFFIC OPERATIONS

1-702-455-7544

CALL-BEFORE YOU DO OVERHEAD

AVOID HITTING OVERHEAD POWER LINES. IT'S COSTLY!

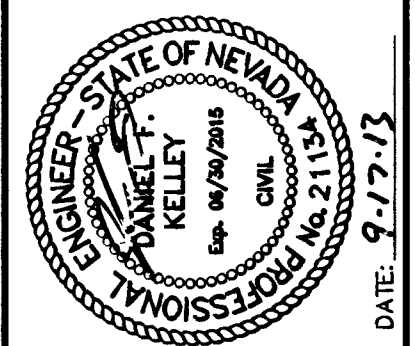
1-702-227-2929

FAST

Call before you UnderGround.

1-702-432-5300

FREEWAY AND ARTERIAL SYSTEM OF TRANSPORTATION



PROJECT NO.	DATE	DESCRIPTION
62023B-205		
DESIGN: DFK		
DRAWN: HUF		
CHECK: J.L.J.		
PLOT DATE: 09-17-13		
PLOT TIME: 11:18:36		

G.C. WALLACE COMPANIES
 ENGINEERS | PLANNERS | SURVEYORS
 1555 S. RAINBOW BOULEVARD - LAS VEGAS, NV 89146
 T: 702.844.0000 - FAX: 702.844.0001
 LAS VEGAS, NEVADA

THE HOWARD HUGHES COMPANY, LLC

VILLAGE 23B
 FAR HILLS AVENUE IMPROVEMENTS - PHASE 1
 DESERT FOOTHILLS DRIVE TO FOX HILL DRIVE

MASTER STORM DRAIN PLAN