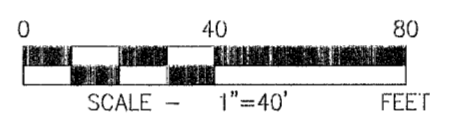
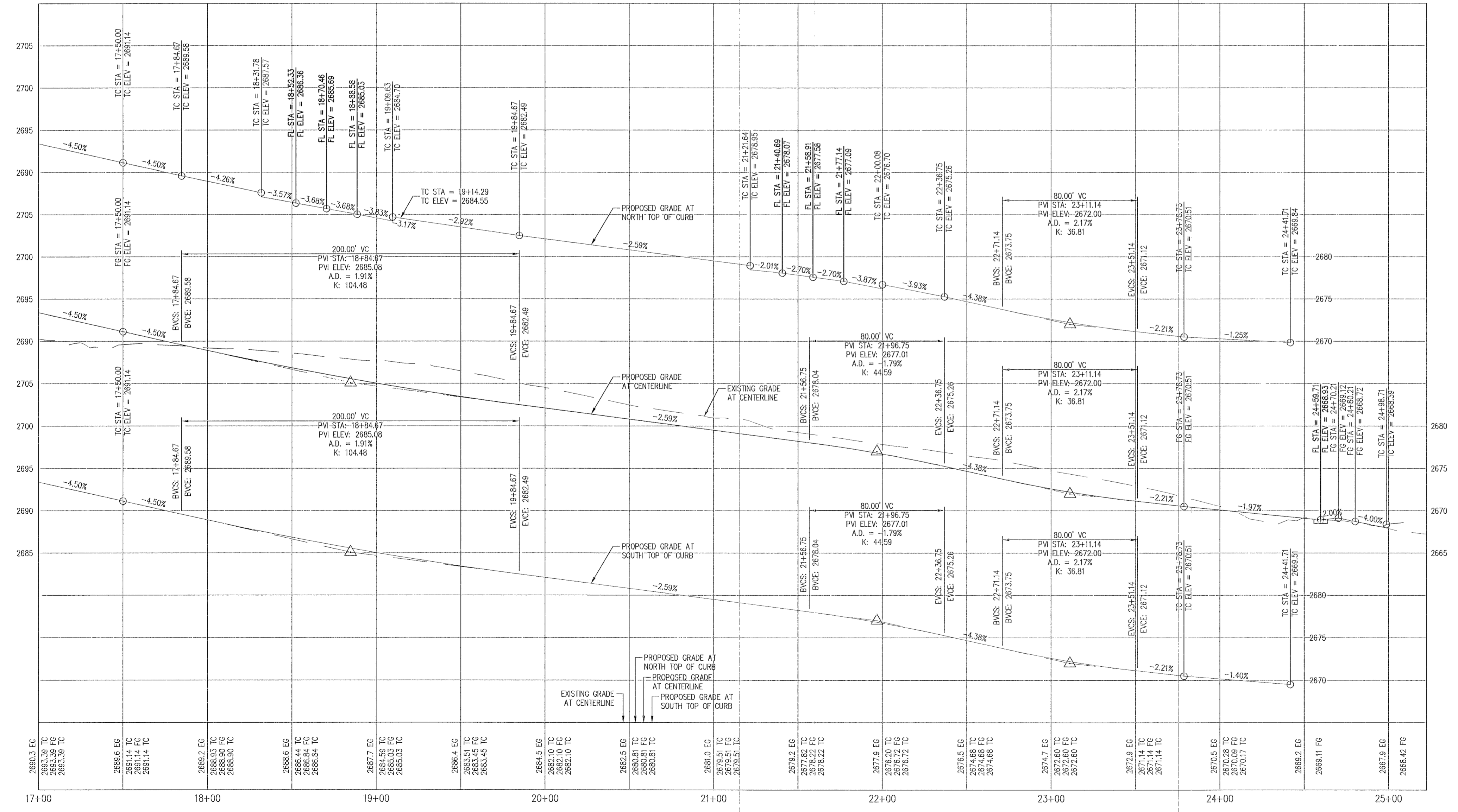


- ### CONSTRUCTION NOTES
- CONSTRUCT 2" AC PAVEMENT WITH 4" TYPE II AGGREGATE BASE
 - CONSTRUCT 4" AC PAVEMENT WITH 5" TYPE II AGGREGATE BASE
 - CONSTRUCT 6" AC PAVEMENT WITH 6" TYPE II AGGREGATE BASE
 - CONSTRUCT DEPRESSED CURB AND DRIVEWAY APRON PER CCAUSD NO. 224
 - EXISTING RCB TO BE ABANDONED IN PLACE. BRICK & MORTAR PLUS ENDS PER DETAIL 18 ON SHEET D-2
 - CONSTRUCT 8" CROSS GUTTER PER CCAUSD NO. 228
 - CONSTRUCT "L" TYPE CURB AND GUTTER PER CCAUSD NO. 216
 - CONSTRUCT 4.0' WIDE SIDEWALK PER CCAUSD NO. 234
 - CONSTRUCT 5' WIDE SIDEWALK PER CCAUSD NO. 234
 - CONSTRUCT 16" WIDE SIDEWALK/MULTI USE TRAIL PER CCAUSD NO. 234
 - CONSTRUCT MULTI-USE EQUESTRIAN TRAIL WITH 4" DECOMPOSED GRANITE OVER 2" TYPE II AGGREGATE BASE (PER SDR6233 CONDITION #18)
 - CONSTRUCT SIDEWALK RAMPS USING ARMOR TILE TRUNCATED DOMES OR EQUIVALENT PER CCAUSD NO. 235, CASE I
 - CONSTRUCT SIDEWALK RAMPS USING ARMOR TILE TRUNCATED DOMES OR EQUIVALENT PER CCAUSD NO. 235, CASE III
 - REMOVE ABANDONED WOOD UTILITY POLE TYP.
 - INSTALL REMOVABLE BOLLARDS SPACED 4.5' (MAX) O.C. PER DETAIL ON SHEET
 - CONSTRUCT SIDEWALK DRAIN PER CCAUSD NO. 236
 - RIP RAP 050=12" OVER M275 8 OZ. NON-WOVEN FILTER FABRIC OR APPROVED EQUIVALENT (THICKNESS PER PLAN OR SECTION)
 - CONSTRUCT DRIVEABLE ACCESS ROAD WITH 6" TYPE II AGGREGATE COMPACTED TO 95%
 - ADJUST EXISTING UTILITY STRUCTURE TO GRADE (SEE UTILITY PLAN FOR STRUCTURE IDENTIFICATION)
 - INSTALL 18" RCP SD (PUBLIC)
 - INSTALL 24" RCP SD (PUBLIC)
 - INSTALL 30" RCP SD (PUBLIC)
 - INSTALL 42" RCP SD (PUBLIC)
 - INSTALL 48" TYPE I SDMH PER CCAUSD NO. 403
 - INSTALL 60" TYPE II SDMH PER CCAUSD NO. 405
 - INSTALL 60" TYPE III SDMH PER CCAUSD NO. 407
 - INSTALL TYPE CM-2 DROP INLET PER CCAUSD NO. 412.1 AND 421 (SIZE PER PLAN)
 - INSTALL 18" RCP END SECTION PER DETAIL ON SHEET D-3
 - INSTALL 6" HIGH WROUGHT IRON FENCE
 - CONSTRUCT "A" TYPE ISLAND CURB AND GUTTER PER CCAUSD NO. 219
 - ADJUST EXISTING STORM DRAIN MANHOLE RIM TO GRADE (SEE PROFILE FOR PROPOSED RIM ELEVATION)
 - CONCRETE AMENITY ZONE PER TOWN CENTER DESIGN DEVELOPMENT STANDARDS PD-007-09-2012RS SEE FIGURE 14
 - EXISTING POWER POLE TO REMAIN
 - INSTALL PORTABLE PRECAST BARRIER RAIL PER NDOT R-8.7.1 AND R-8.7.1.1 (SEE DETAIL ON SHEET D-3)
 - ADJUST EXISTING MANHOLE RIM/PULLBOX TO GRADE
 - REMOVE AND REPLACE EXISTING RIPRAP AS NECESSARY (MATCH EXISTING SIZE AND DEPTH)
 - REMOVE 21" OF EXISTING ABANDONED 18" RCP STORM DRAIN AND CAP ENDS (10.5' EITHER SIDE OF PROPOSED INLET) FROM STA 17+34.62 TO 17+56.62
 - INSTALL 18" RCP END SECTION PER NDOT R-2.1 (SEE DETAIL ON SHEET D-3)
 - PIPE PENETRATION INTO EXISTING RCB PER STRUCTURAL DESIGN BY OTHERS
 - SAWOUT AND MATCH EXISTING AC PAVEMENT PER CCAUSD NO. 500.3
 - SAWOUT AND MATCH EXISTING AC PAVEMENT PER CCAUSD NO. 500.5
 - CONSTRUCT RESIDENTIAL DRIVEWAY PER CCAUSD NO. 222 AND 224
 - INSTALL DROP INLET WITH WATERTIGHT JOINTS USING RUBBER GASKETS IN JOINTS
 - CONSTRUCT NODOT DROP INLET TYPE 3 PER NODOT PLAN R-4.2.3.3 SEE SHEET D-4 WITH 25' GRATES AND CURB OPENING



BRIGHT BLUE SKY AVE
(PUBLIC STREET)



PROFILE
HOR. : 1"=40'

AVOID HITTING UNDERGROUND TRAFFIC SIGNAL SYSTEMS AND STREET LIGHT SYSTEM CONDUITS. IT'S COSTLY.

Call before you do UnderGround
1-702-455-6000
1-702-432-5300
FREWAY AND ARTERIAL SYSTEM OF TRANSPORTATION

AVOID HITTING OVERHEAD POWER LINES. IT'S COSTLY.

CALL BEFORE YOU DO OVERHEAD
1-702-227-2929

BENCHMARK
RIVET & PLATE ON NORTHEAST OF HEADWALL ON THE WEST SIDE OSO BLANCA RD. 200' SSE OF FORT APACHE & RACEL, 7019050SW

NAVD 88 ELEV=614.651 METERS=2672.73 FEET

BASIS OF BEARING

Call before you Dig
Avoid cutting underground utility lines. It's costly.

Call on

SLATER HANIFAN GROUP
CONSULTING ENGINEERS & PLANNERS
5740 S. ARVILLE STREET #216, LAS VEGAS, NV 89118
PHONE (702) 284-5300 FAX (702) 284-5399

NO.	DESCRIPTION	DATE	BY	APP.

CITY OF LAS VEGAS, NV

D. R. HORTON
GRAND TETON AND TEE PEE
BRIGHT BLUE SKY AVE STA 17+00 TO 25+20
STREET PLAN AND PROFILE

DATE: 07/18/13
DRAFTER: DSP
DESIGNER: DSP
CHECKED: DJP
PROJECT NO.
DRH1213-000

DATE: 07/18/13
DRAFTER: DSP
DESIGNER: DSP
CHECKED: DJP
PROJECT NO.
DRH1213-000

PROFESSIONAL ENGINEER - STATE OF NEVADA
DARRIN J. PAPP
Exp. 12/31/2014
No. 15815