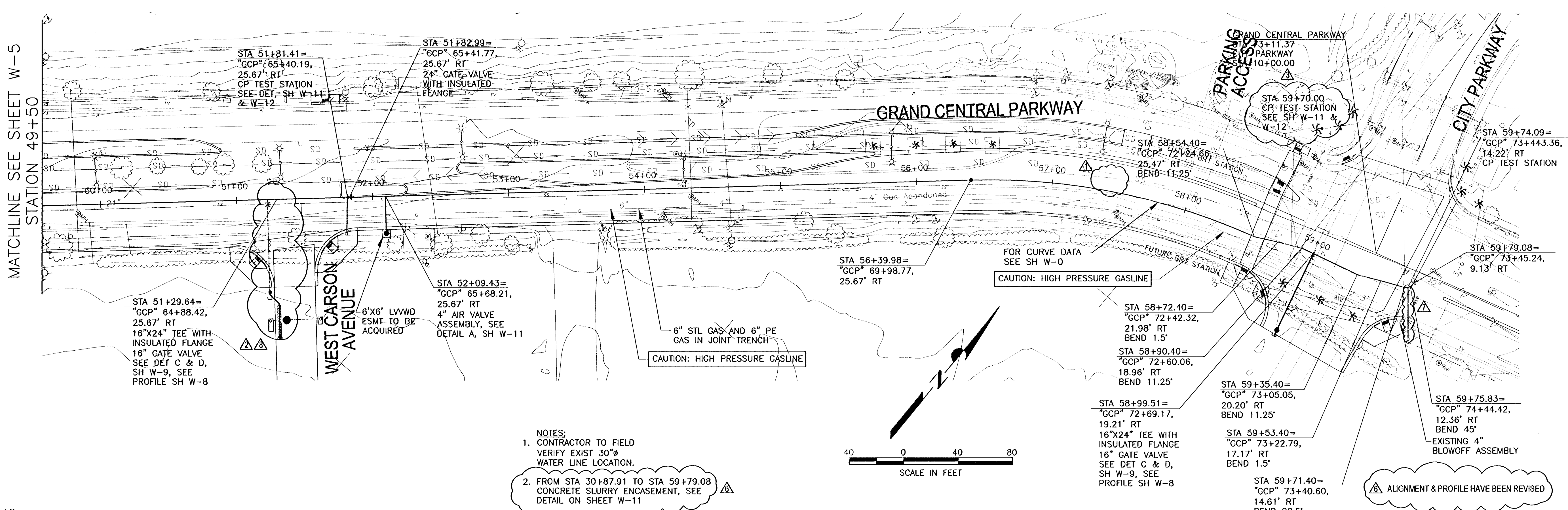
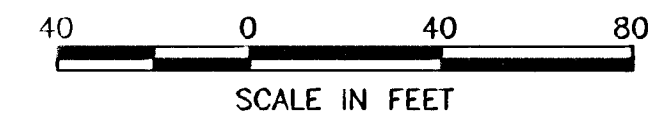


MATCHLINE SEE SHEET W-5
STATION 49+50

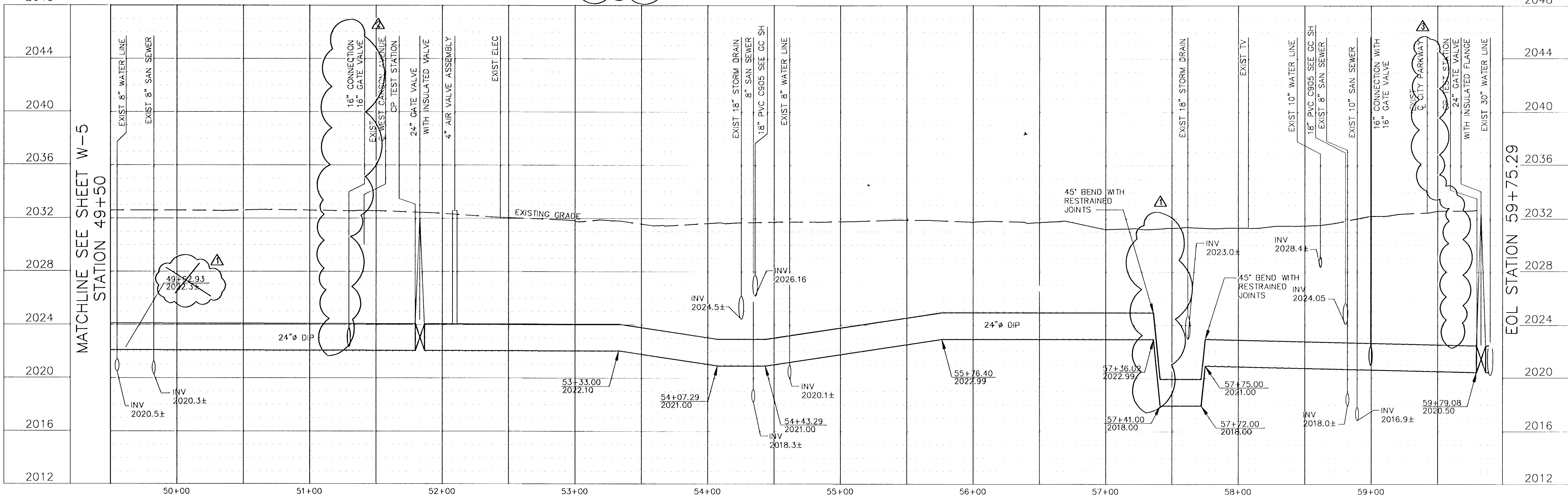


- NOTES:
- CONTRACTOR TO FIELD VERIFY EXIST 30" WATER LINE LOCATION.
 - FROM STA 30+87.91 TO STA 59+79.08 CONCRETE SLURRY ENCASUREMENT, SEE DETAIL ON SHEET W-11



2048

2048



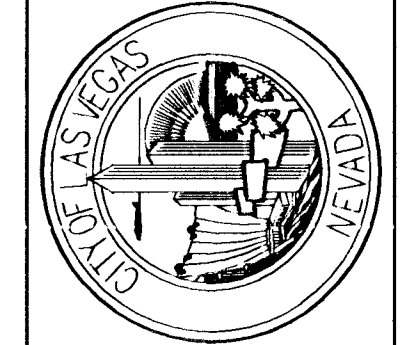
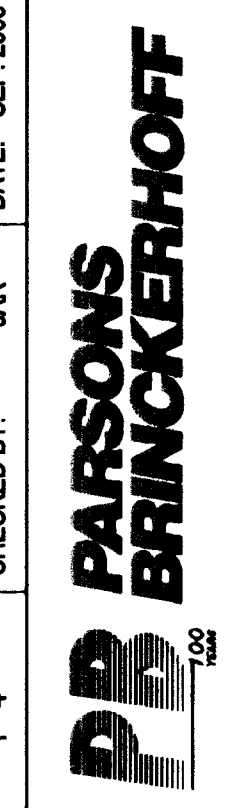
MATCHLINE SEE SHEET W-5
STATION 49+50

EOL STATION 59+75.29

NO.	DATE	DESCRIPTION
9-6-07		ALIGNMENT & PROFILE HAVE BEEN REVISED
10-29-07		ADDED NOTE
9-6-07		DEFLECTION REVISED
9-6-07		CP STA REVISED
9-6-07		LATERAL REVISED
9-6-07		BLOWOFF REMOVED

01-16-08 WATER LATERAL LOCATION
9-16-08 AVAR ASSEMBLY LOCATION REVISED SEE W-13

DESIGNED BY: STC DEJ
CHECKED BY: JAR
PROJECT NO. 107472
DATE: SEP. 2008



DEPARTMENT OF PUBLIC WORKS
DOWNTOWN CONNECTOR BUS RAPID TRANSIT PROJECT
GRAND CENTRAL PARKWAY WIDENING
WATER LINE PLANS

1st App'd. 8/3/07