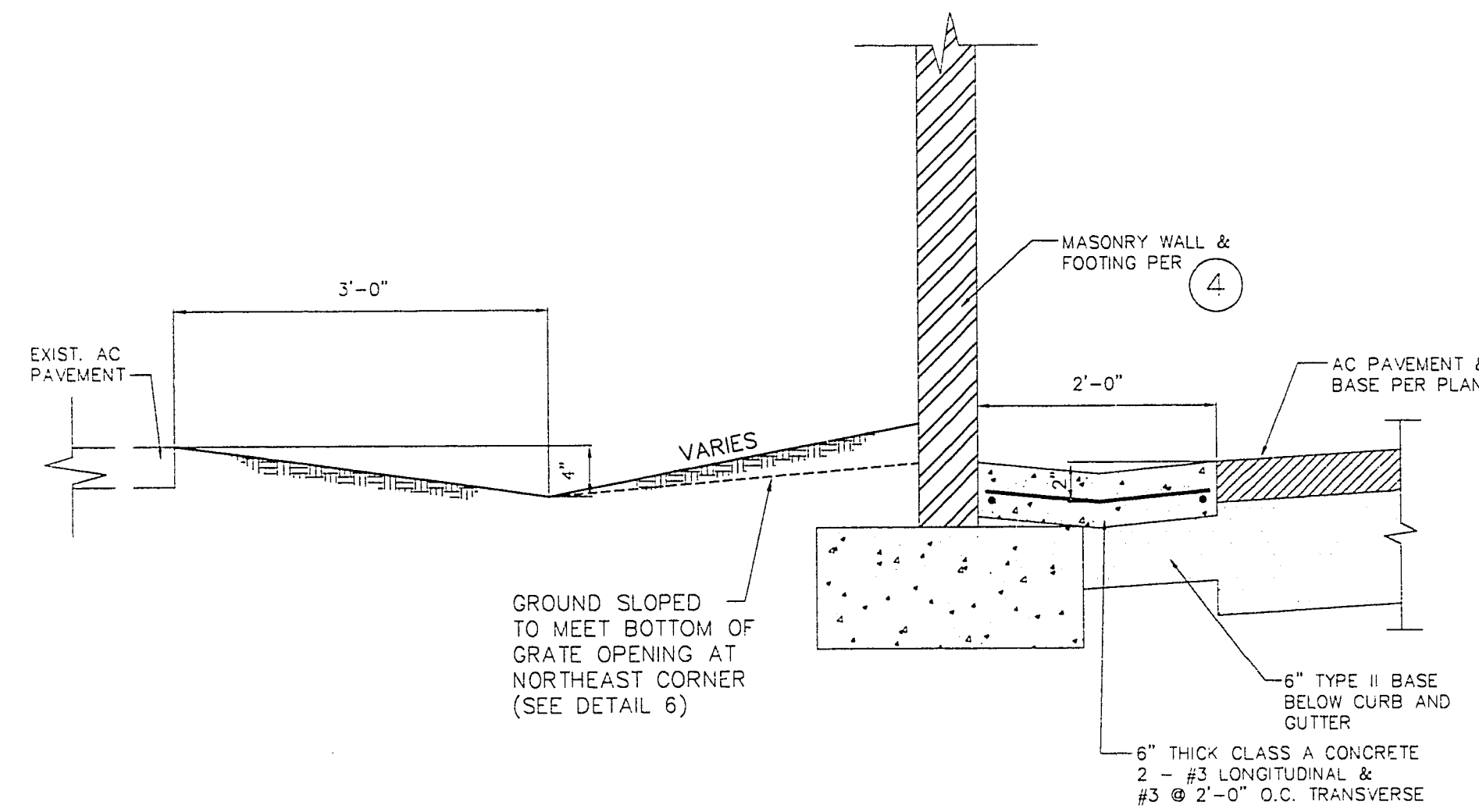


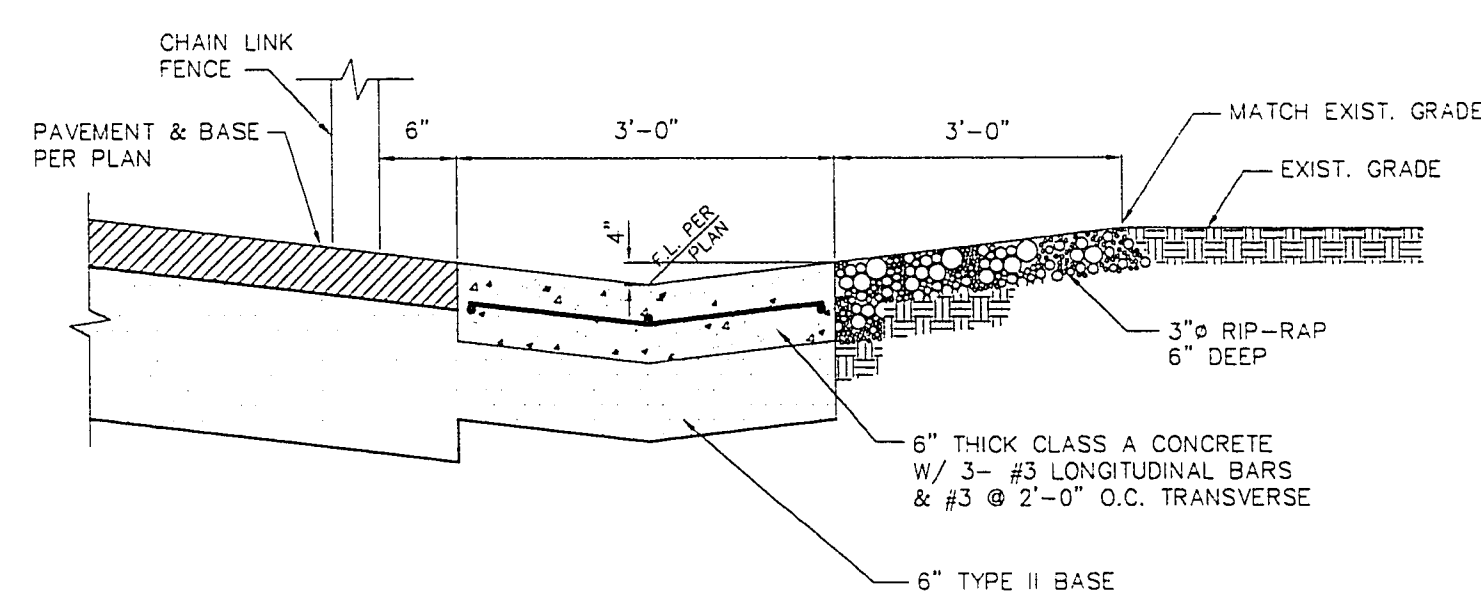
Drawing No.

Project No.



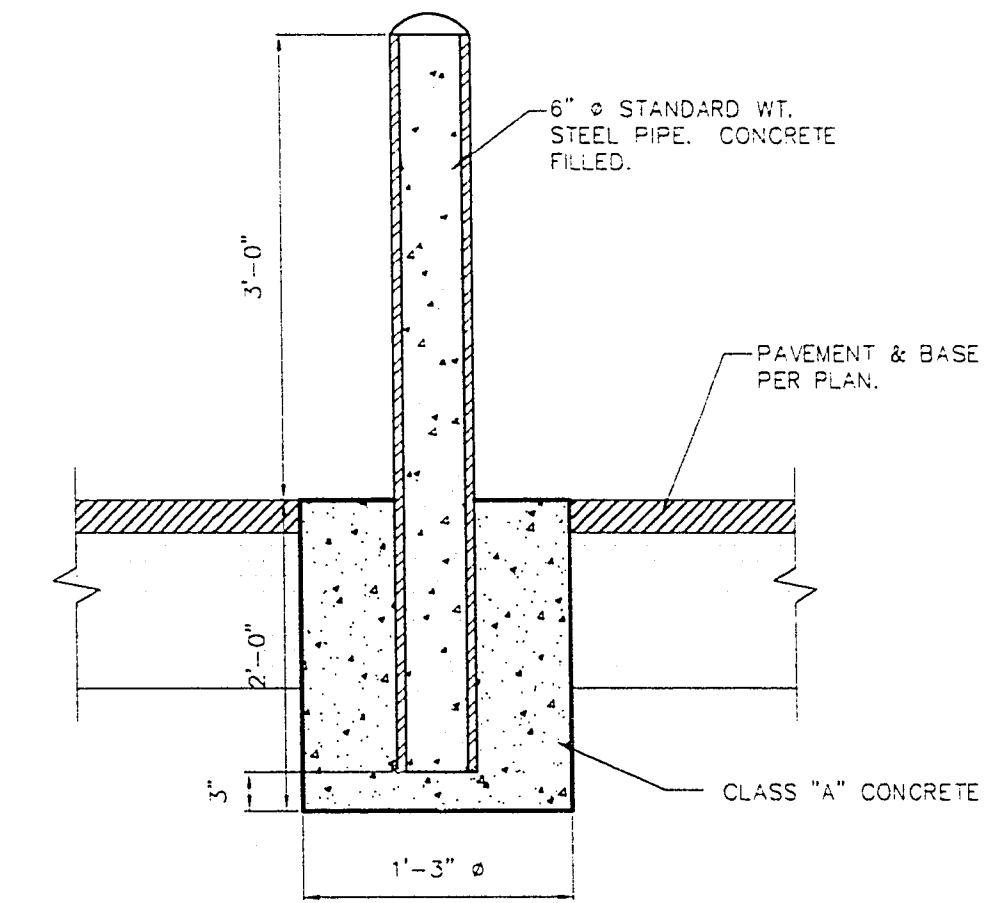
**NORTH SWALE SECTION**  
NO SCALE

1



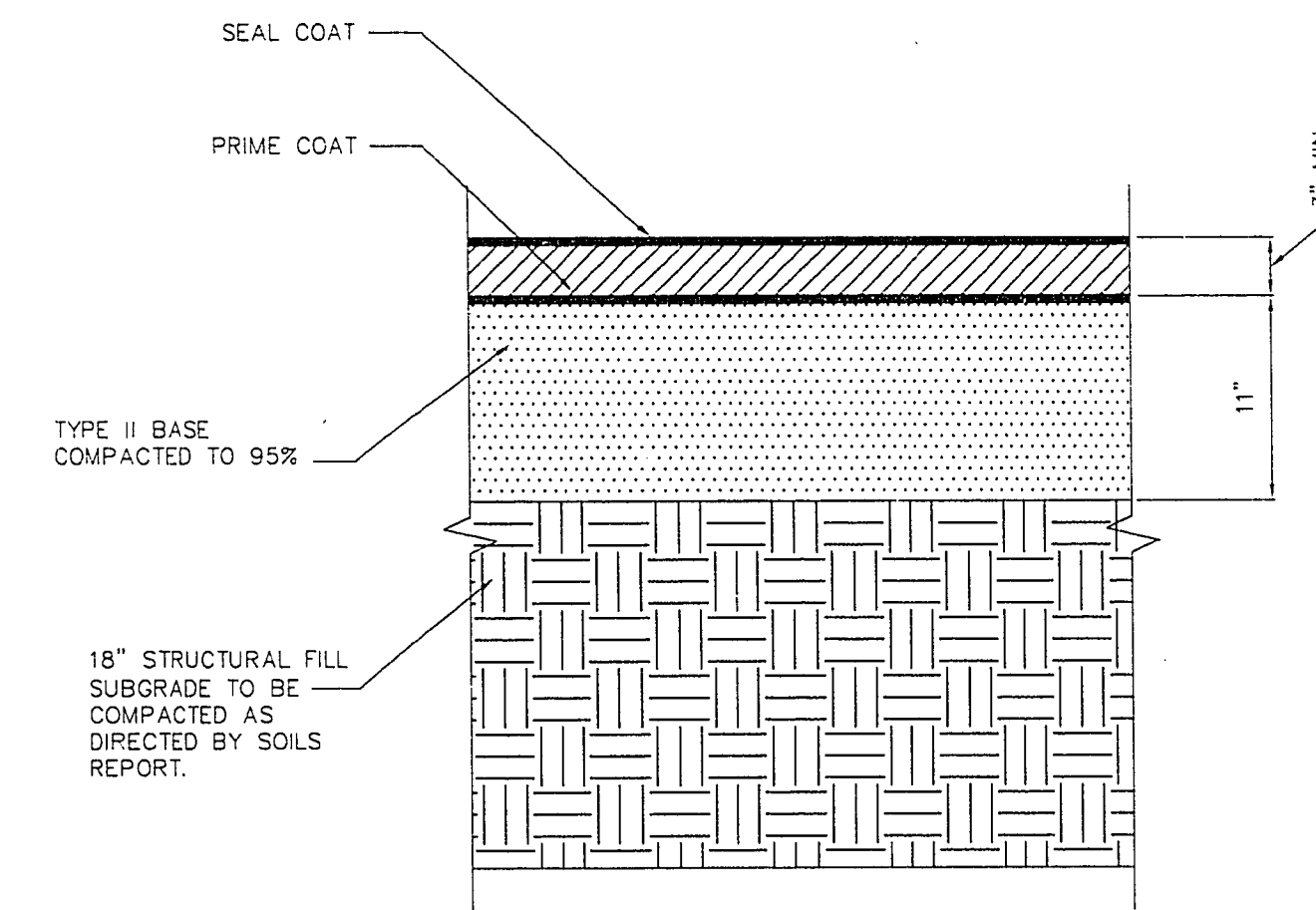
**SOUTH SWALE SECTION**  
NO SCALE

2



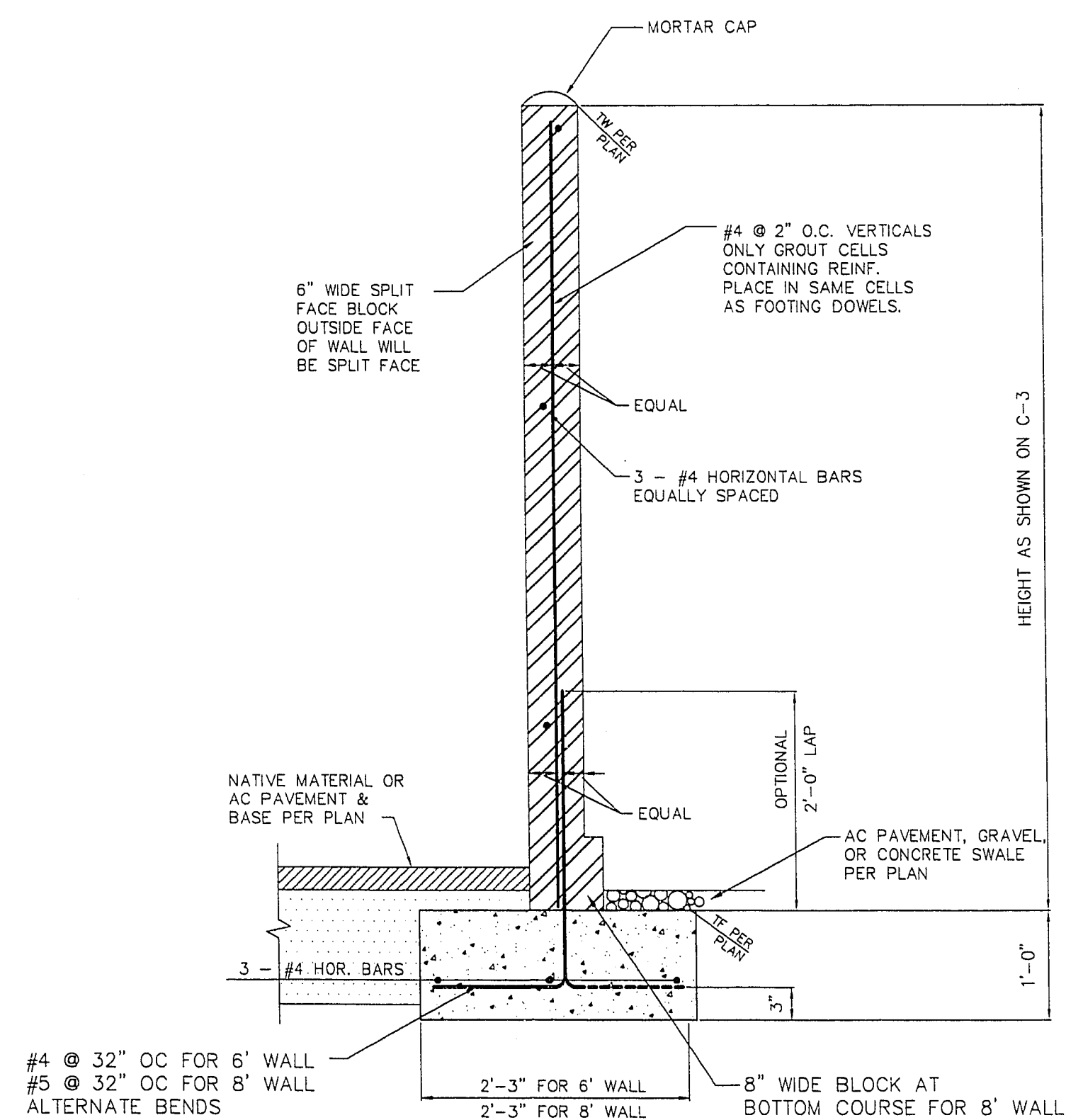
**TYPICAL BOLLARD DETAIL**  
NO SCALE

3



**TYPICAL PAVEMENT SECTION**  
NO SCALE

5

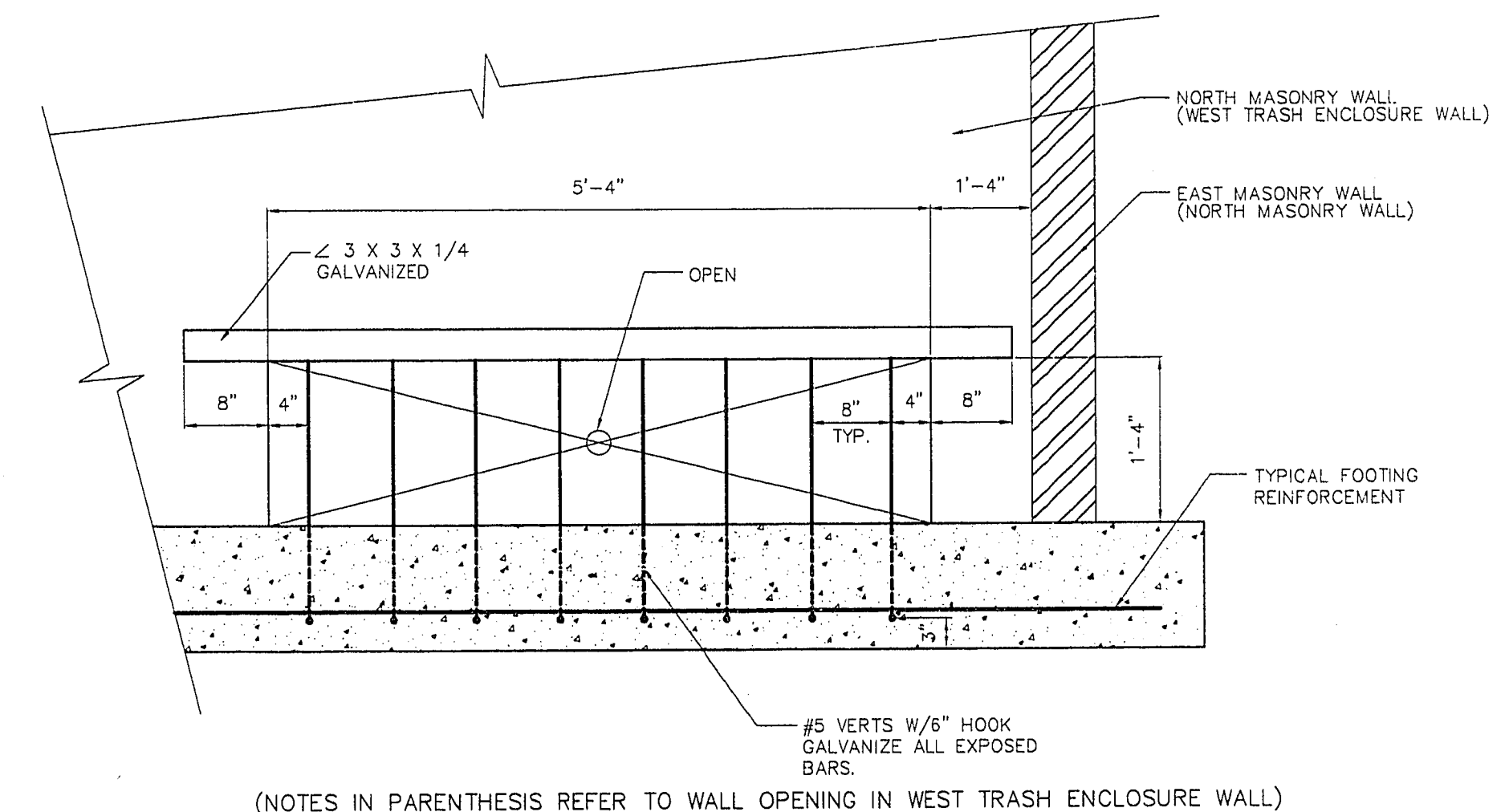


**TYPICAL WALL SECTION**  
NO SCALE

4

**NOTES FOR CONCRETE BLOCK WALLS**

1. CONCRETE BLOCK UNITS SHALL BE LIGHT WEIGHT, 1900 P.S.I., GRADE "N" UNITS CONFORMING TO ASTM C90.
2. BLOCK UNITS SHALL BE SUFFICIENTLY MOIST AT TIME OF LAYING TO PREVENT DEHYDRATION OF MORTAR AND GROUT.
3. BLOCK UNITS SHALL BE FREE OF ALL SUBSTANCES WHICH MIGHT IMPAIR THE BOND OF THE BLOCK TO THE MORTAR AND GROUT.
4. MORTAR SHALL BE TYPE "S" MIX CONSISTING OF ONE PART CEMENT AND THREE PARTS SAND WITH 1/4 TO 1/2 PART LIME.
5. GROUT SHALL CONSIST OF ONE PART CEMENT AND THREE PARTS SAND WITH 1/10 TO 1/15 PART LIME. GROUT SPACE MORE THAN TWO INCHES IN WIDTH MAY HAVE IN ADDITION TO THE SAND NOT MORE THAN TWO PARTS PER GRAVEL.
6. CEMENT FOR MORTAR AND GROUT SHALL BE A LOW ALKALI TYPE CONFORMING TO ASTM C150.
7. CEMENT USED IN CONCRETE MASONRY MATERIALS BELOW GRADE SHALL BE TYPE V.
8. MORTAR AND GROUT SHALL HAVE AN ULTIMATE COMPRESSIVE STRENGTH AT AGE 28 DAYS OF 2000 P.S.I.
9. CONCRETE USED IN THE WORK SHALL HAVE 3000 P.S.I. MINIMUM ULTIMATE COMPRESSIVE STRENGTH AT AGE 28 DAYS.
10. ALL CONCRETE SHALL BE STONE CONCRETE UTILIZING AGGREGATE CONFORMING TO ASTM C33. CEMENT SHALL BE TYPE V CONFORMING TO ASTM C150.
11. CONCRETE SHALL NOT BE FREELY DROPPED MORE THAN THREE FEET.
12. ALL CONCRETE SHALL BE PLACED WITH A SLUMP NOT TO EXCEED 4".
13. REINFORCING STEEL SHALL BE NEW STOCK, DEFORMED BARS CONFORMING TO ASTM A615, GRADE 60 UNLESS NOTED OTHERWISE. (GRADE 40 MAY BE USED FOR #3 BARS OR LESS).
14. ALL REINFORCING STEEL SHALL BE FREE OF RUST, GREASE, MILL, SCALE, OR ANY MATERIAL WHICH MIGHT AFFECT ITS BOND TO CONCRETE.
15. ALL REINFORCING STEEL BENDS MUST BE MADE COLD. REBENDING OF BARS WILL NOT BE PERMITTED.
16. BENDING, PLACING, SPACING, CONCRETE PROTECTIVE COVER, SPlicing, AND ALL OTHER DETAILS OF REINFORCEMENT SHALL CONFORM TO THE "BUILDING CODE REQUIREMENT FOR REINFORCED CONCRETE" A.C.I. 318 - LATEST EDITION, CHAPTER 7 AND THE "MANUAL OF STANDARD PRACTICE FOR DETAILING REINFORCED CONCRETE STRUCTURES" A.C.I. 315 - LATEST EDITION.
17. WELDING OF REINFORCING STEEL WILL NOT BE PERMITTED.



**MASONRY WALL OPENING**  
NO SCALE

6

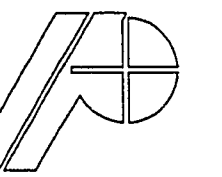


JMA ARCHITECTS, INC.

Architecture  
Research and Planning  
Interior and Graphic Design  
Landscape Architecture

4392 S. Maryland Parkway  
Las Vegas, Nevada 89129  
(702) 731-2033

Consultants



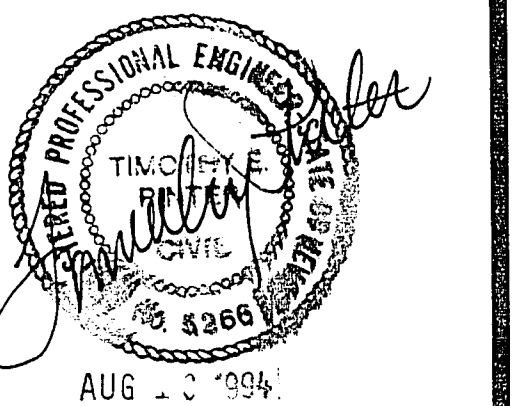
ENGINEERS PLANNERS SURVEYORS  
**POGGEMEYER DESIGN  
GROUP**

2601 N. TENAYA WAY  
LAS VEGAS, NEVADA 89128  
(702) 255-8100

The Contractor shall check and verify all dimensions and report all errors and omissions to this office prior to commencing work. These drawings are not to be scaled.

Copyright 1992 JMA Architects & Engineers ©

Seal



Revisions

No.	Date	Description

Date 22 NOV 93

Drawn JGH

Checked DCL/TEP

Project No. 93069

Project

**CITY OF LAS VEGAS  
FIRE EQUIPMENT  
SERVICE CENTER  
(FESC)**

Las Vegas, Nevada 89101

Drawing Title

DETAILS

Drawing No.

C-6

630-86

4-133