

W.O. no. 3290  
3289

Scale (V)  
1" = 50'

Date 8/20/77

Design by C. KALONOSKI

Drawn by M. ESCOBAR

Approved by the Director of Public Services

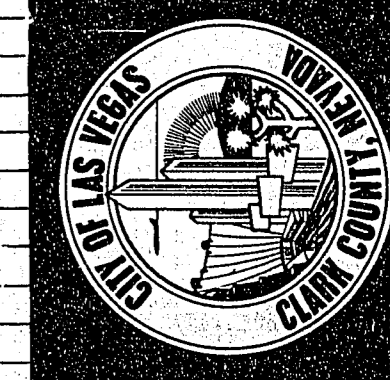
Date

Engineering Design Division

IRRIGATION PLAN  
PHASE IV & V

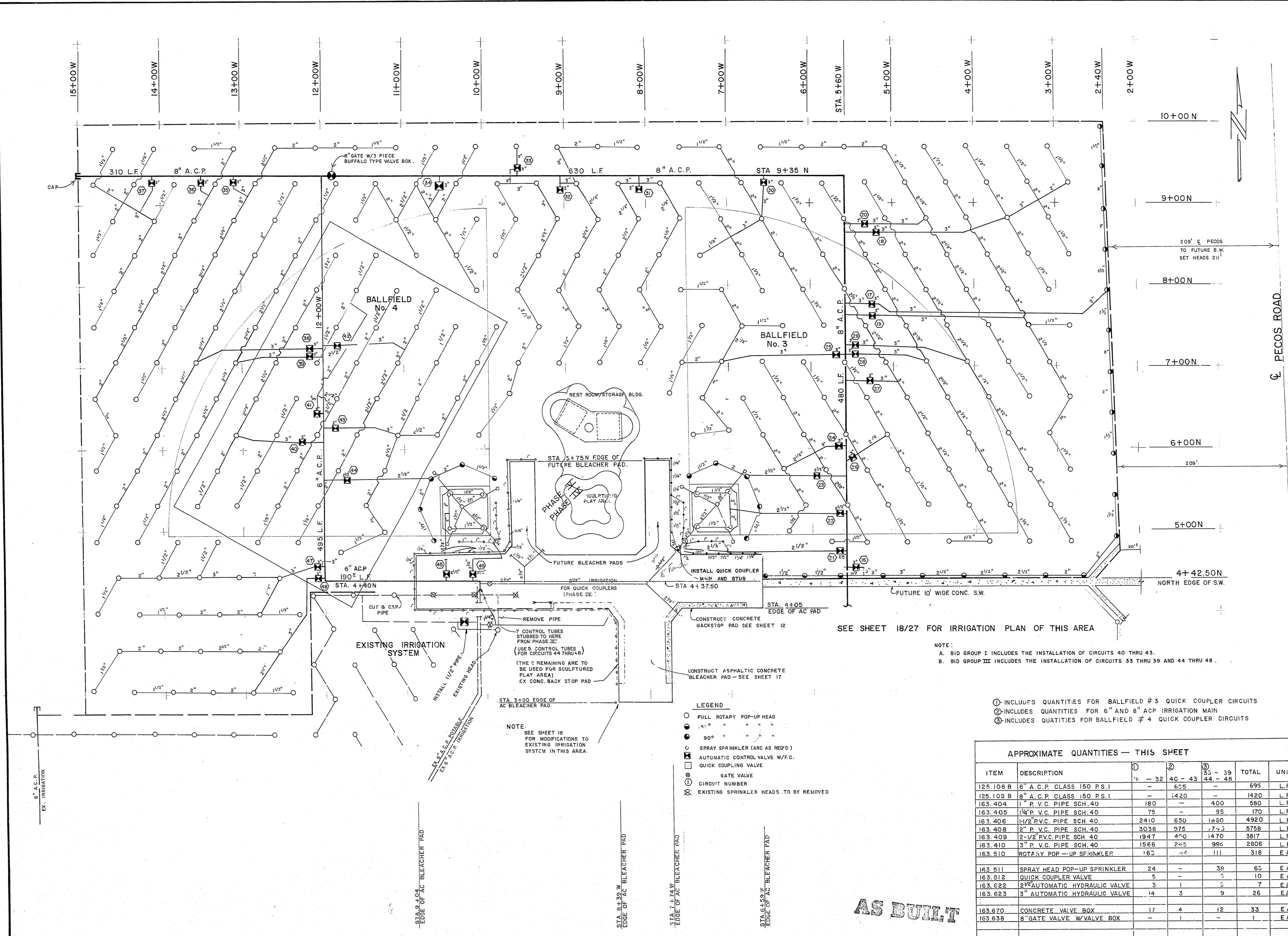
Department of Public Services

FREEDOM PARK



Drawing no. 650.22-8

19



SEE SHEET 18/27 FOR IRRIGATION PLAN OF THIS AREA

- NOTE:
- A. BID GROUP I INCLUDES THE INSTALLATION OF CIRCUITS 40 THRU 43.
  - B. BID GROUP III INCLUDES THE INSTALLATION OF CIRCUITS 33 THRU 39 AND 44 THRU 48.

- ① INCLUDES QUANTITIES FOR BALLFIELD #3 QUICK COUPLER CIRCUITS
- ② INCLUDES QUANTITIES FOR 6" AND 8" ACP IRRIGATION MAIN
- ③ INCLUDES QUANTITIES FOR BALLFIELD #4 QUICK COUPLER CIRCUITS

APPROXIMATE QUANTITIES — THIS SHEET

ITEM	DESCRIPTION	①	②	③	TOTAL	UNIT
		32 - 43	40 - 43	35 - 39 44 - 48		
125.106 B	6" A.C.P. CLASS 150 P.S.I	-	605	-	695	L.F.
125.108 B	8" A.C.P. CLASS 150 P.S.I	-	1420	-	1420	L.F.
163.404	1" P.V.C. PIPE SCH. 40	180	-	400	580	L.F.
163.405	1 1/4" P.V.C. PIPE SCH. 40	75	-	95	170	L.F.
163.406	1 1/2" P.V.C. PIPE SCH. 40	2410	650	1650	4920	L.F.
163.408	2" P.V.C. PIPE SCH. 40	3038	975	1743	5758	L.F.
163.409	2 1/2" P.V.C. PIPE SCH. 40	1947	400	1470	3817	L.F.
163.410	3" P.V.C. PIPE SCH. 40	1566	245	990	2806	L.F.
163.510	ROTARY POP-UP SPRINKLER	165	44	111	318	E.A.
163.511	SPRAY HEAD POP-UP SPRINKLER	24	-	39	65	E.A.
163.512	QUICK COUPLER VALVE	5	-	5	10	E.A.
163.622	2 1/2" AUTOMATIC HYDRAULIC VALVE	3	-	3	7	E.A.
163.623	3" AUTOMATIC HYDRAULIC VALVE	14	3	9	26	E.A.
163.670	CONCRETE VALVE BOX	17	4	12	33	E.A.
163.638	8" GATE VALVE W/VALVE BOX	-	1	-	1	E.A.

AS BUILT