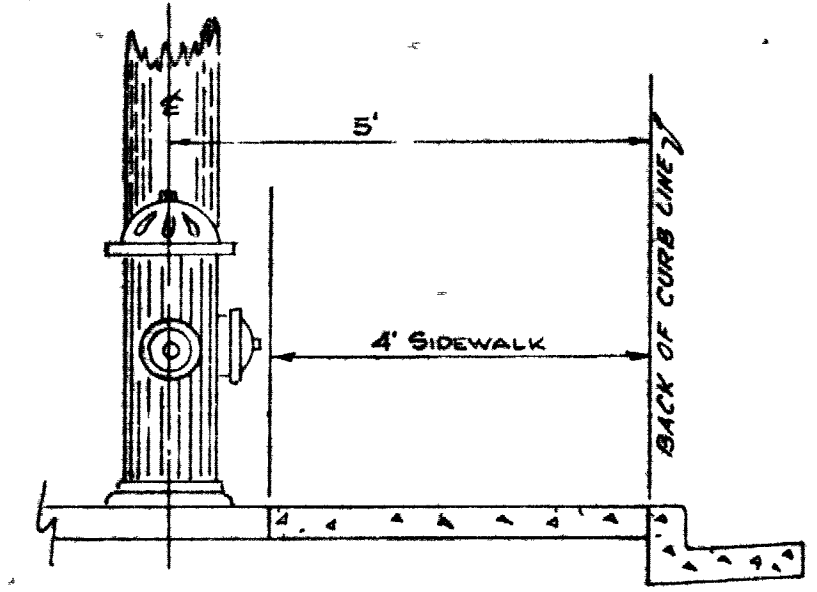
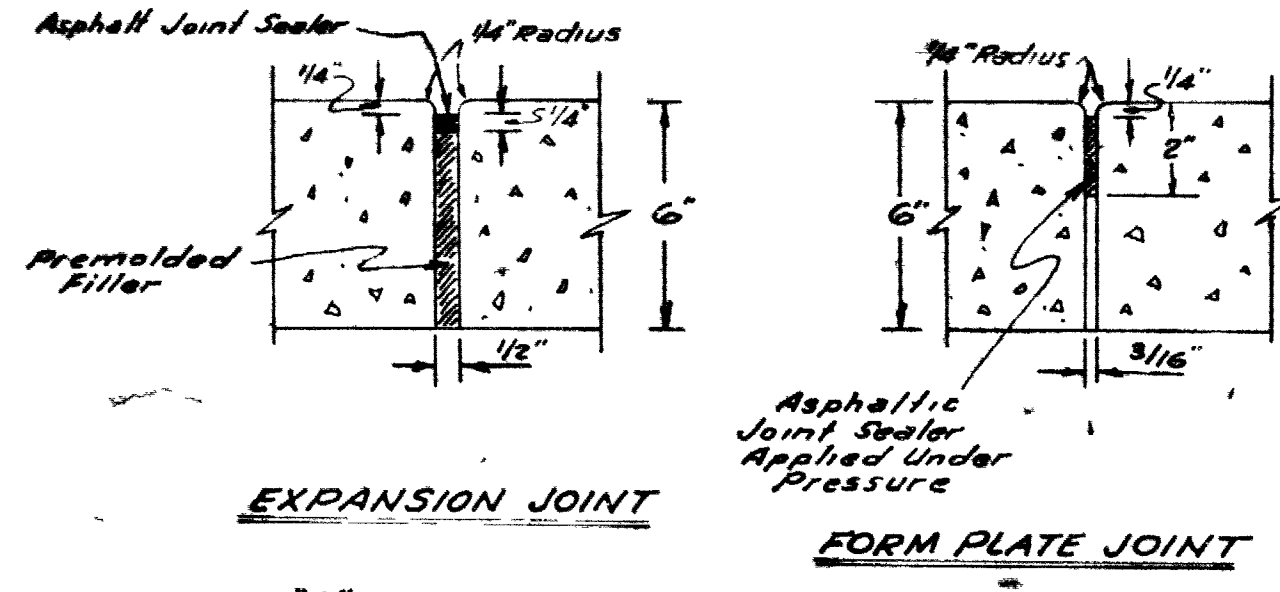
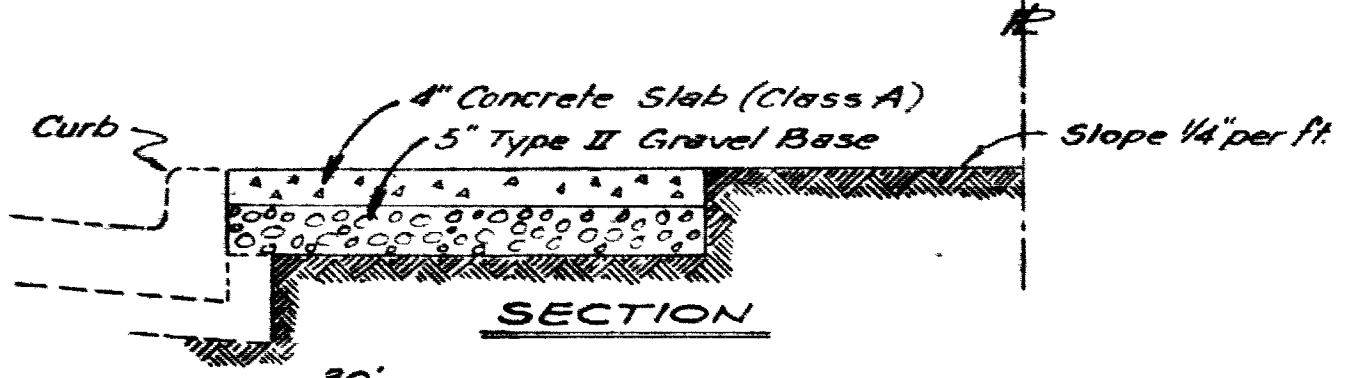
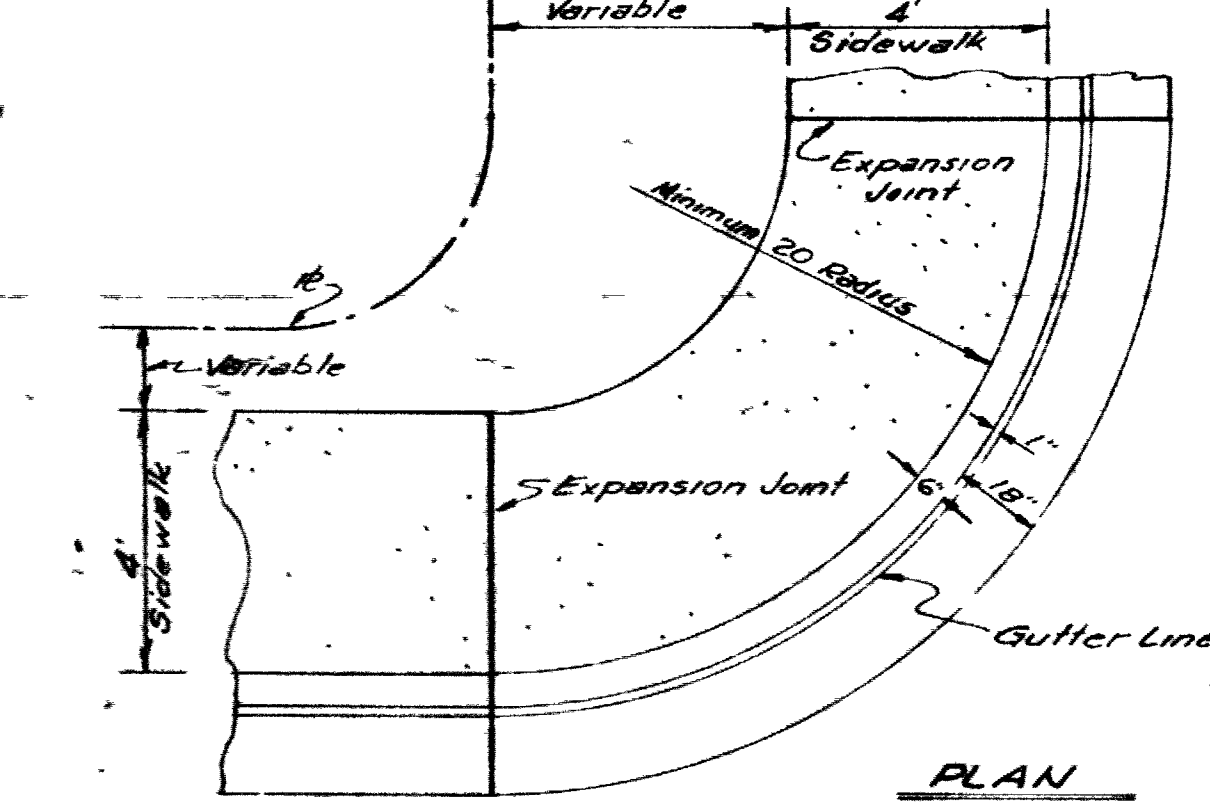
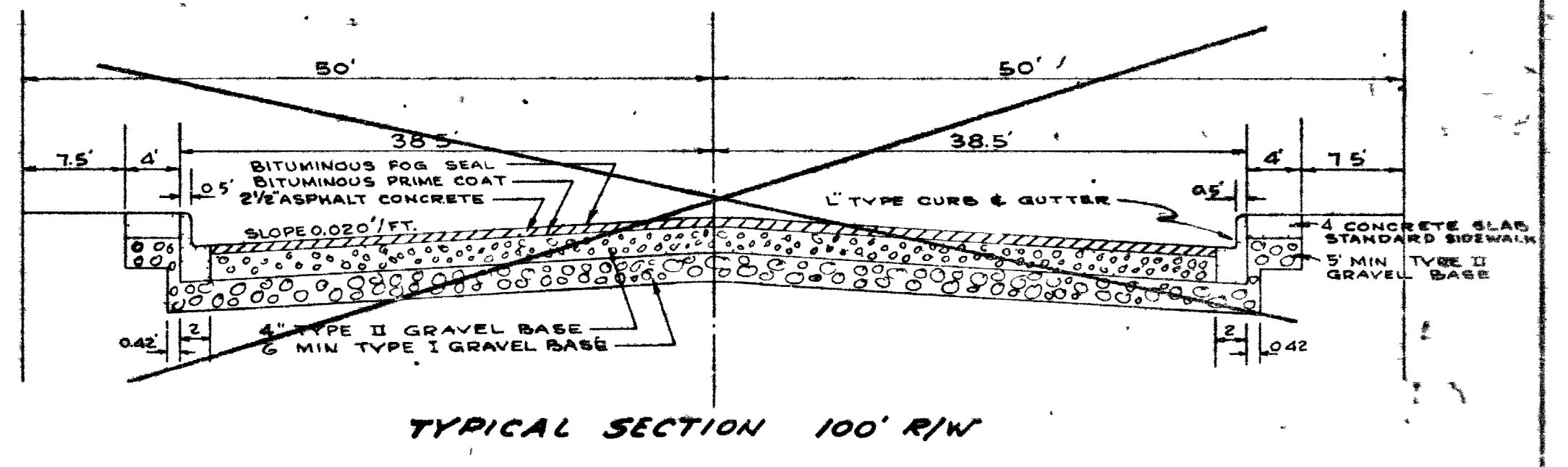
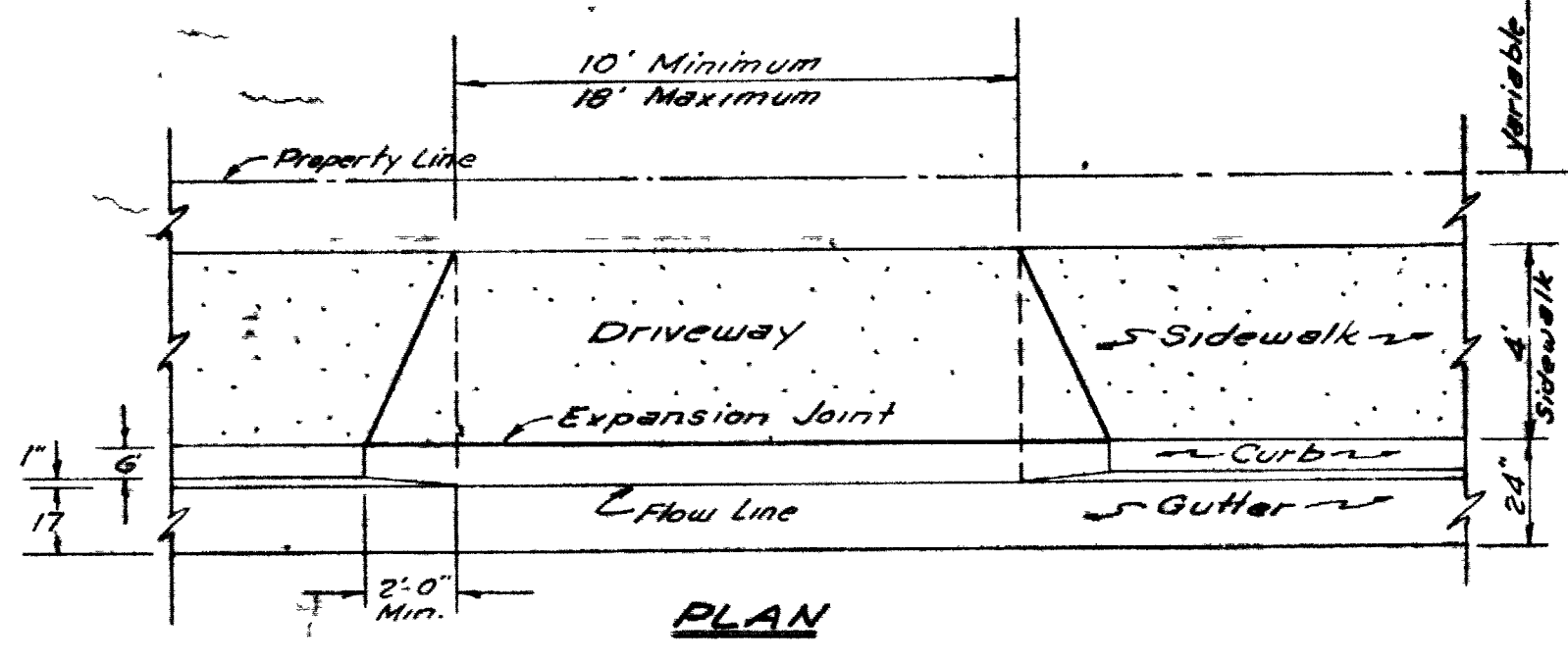
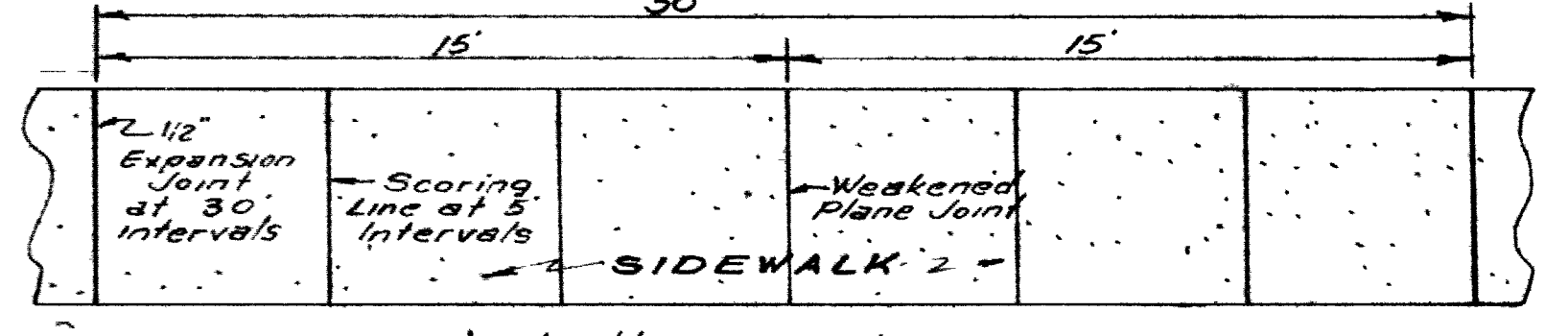
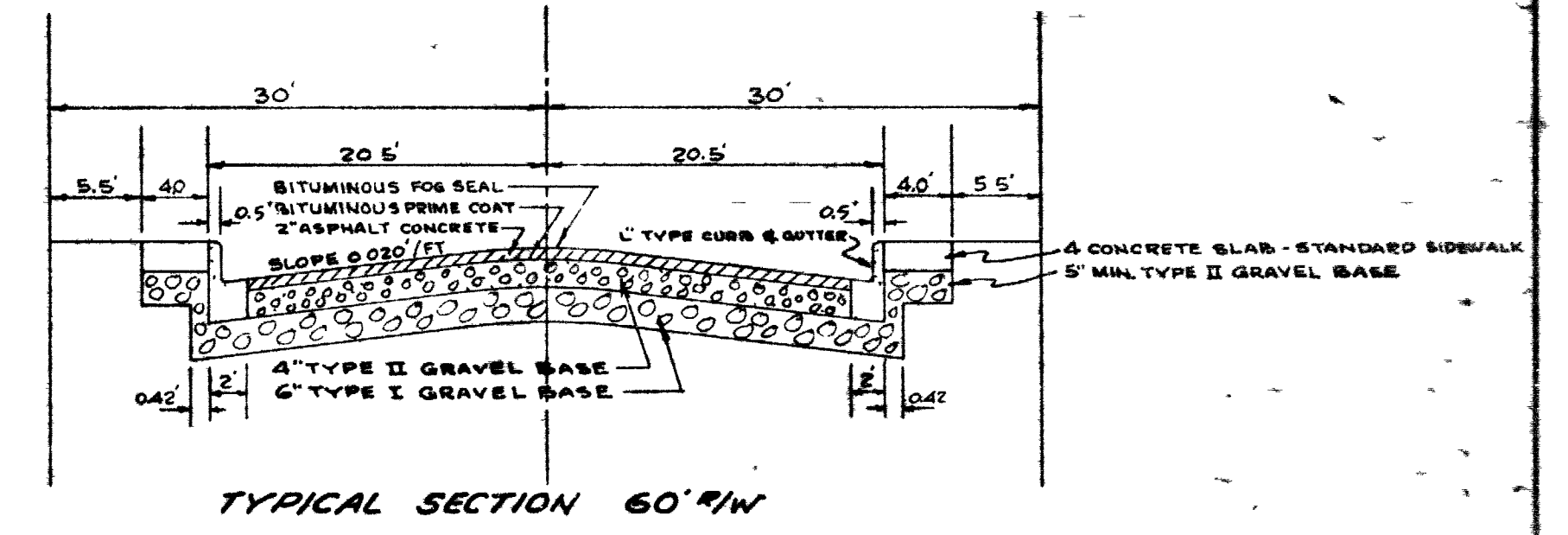
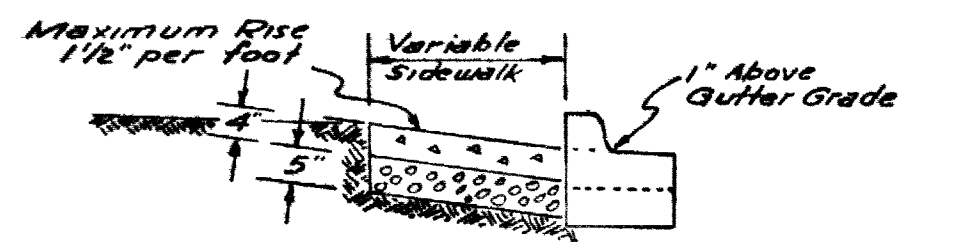


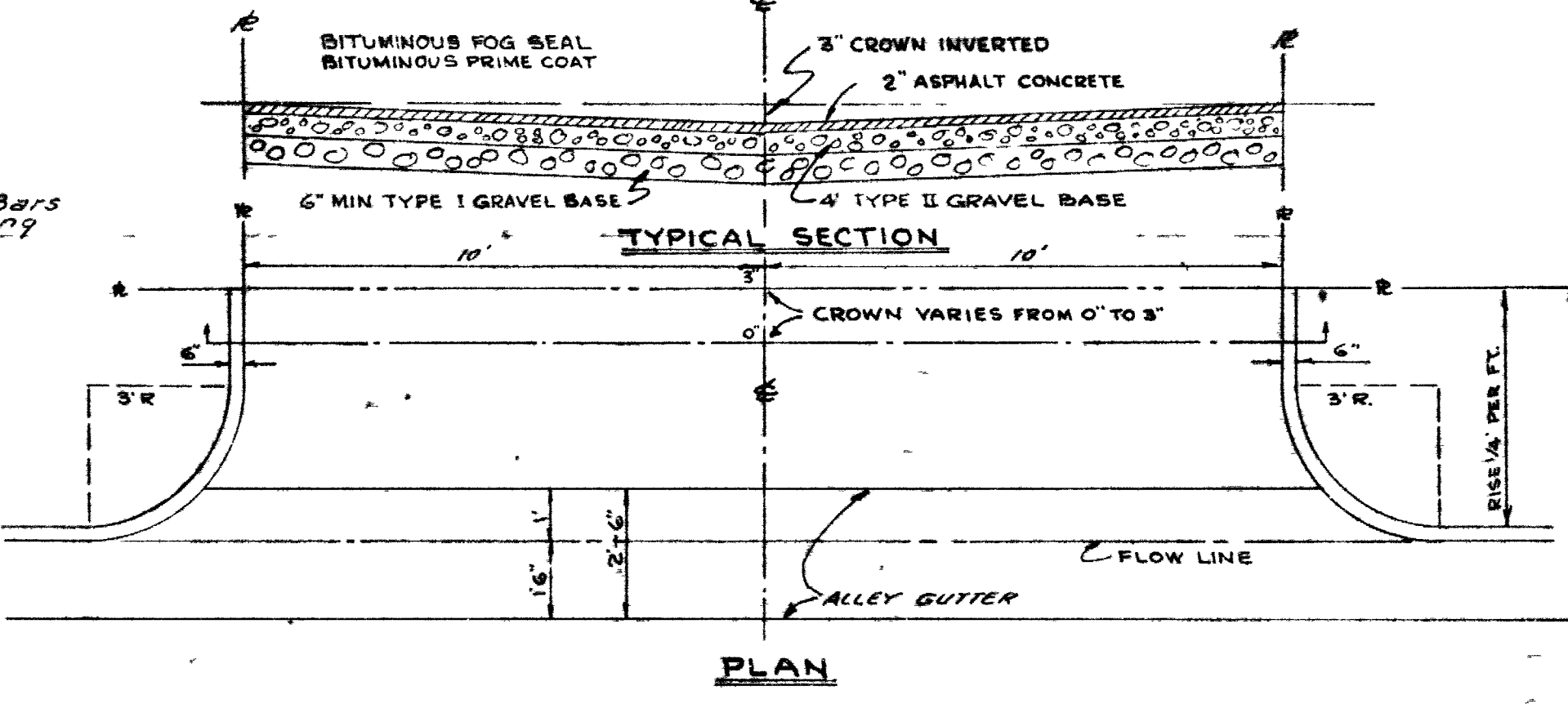
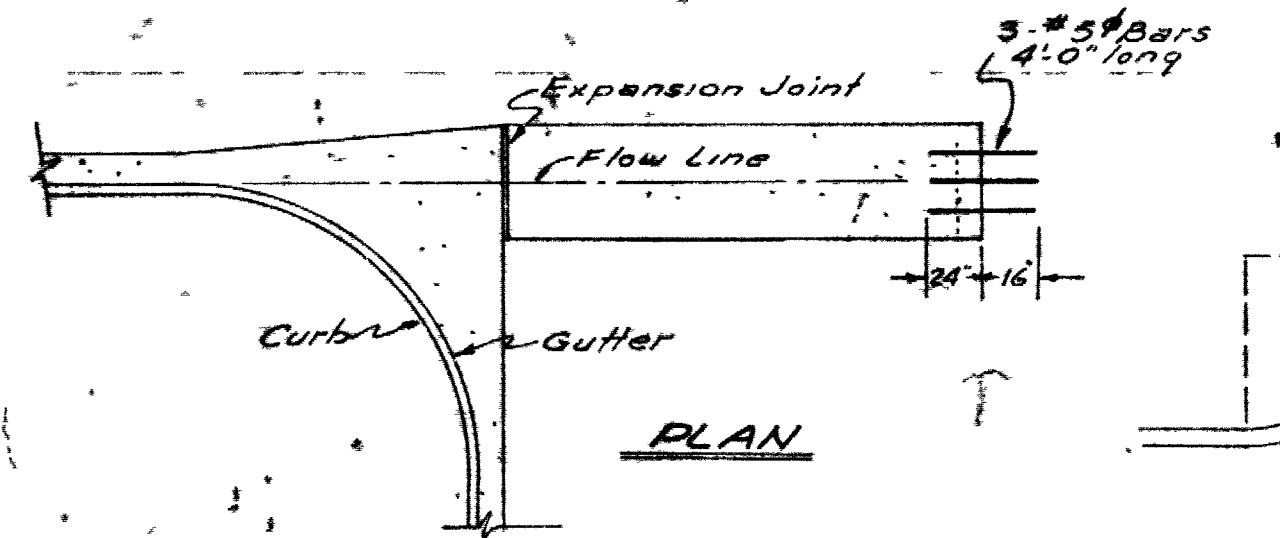
VALLEY GUTTER AND CURB RETURN



L TYPE CURB AND GUTTER



ELEVATION RESIDENTIAL DRIVEWAY

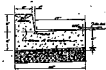
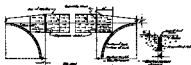


NOTES
Slope on crown may be reduced to 0.015/ft when required for drainage purposes.
All construction shall comply with Clark County specifications.

Approved: Truman B. McJury 9/63

FABULOUS FORTY

CHECKED	APPROVED	DESIGNED
DATE 10-1-62	<i>R. Johnson</i>	DESIGNED R.L.K.
TYPICAL STANDARDS		
No Scale		
Kraemer Engineer - Co.		SHEET OF
Las Vegas, Nevada		



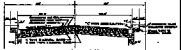
TYPICAL SECTION - BRIDGE PIER DECK



SECTION



PLAN



TYPICAL SECTION OF DECK

TYPICAL SECTION OF BRIDGE DECK



SECTION



REINFORCEMENT PLAN



SECTION OF PIER DECK



PLAN



TYPICAL SECTION OF DECK



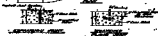
PLAN



SECTION



TYPICAL SECTION OF DECK



REINFORCEMENT PLAN

REINFORCEMENT PLAN



REINFORCEMENT PLAN



TYPICAL SECTION OF BRIDGE DECK



SECTION

DETAIL OF HALF WELLET CUTTERS

NOTES:
 1. ALL REINFORCEMENT SHALL BE AS SHOWN IN THIS SET OF DRAWINGS.
 2. ALL REINFORCEMENT SHALL BE PLACED IN THE POSITION SHOWN IN THIS SET OF DRAWINGS.

J. B. JOHNSON & CO.	
MEMPHIS, TENNESSEE	
DESIGNED BY	DATE
CHECKED BY	DATE
TYPICAL BRIDGES	
NO.	DATE
127-125	