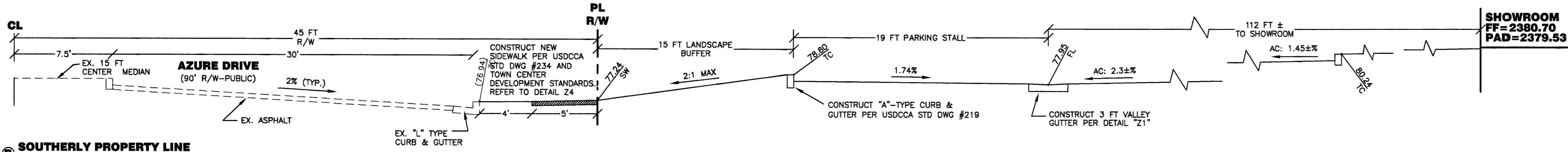
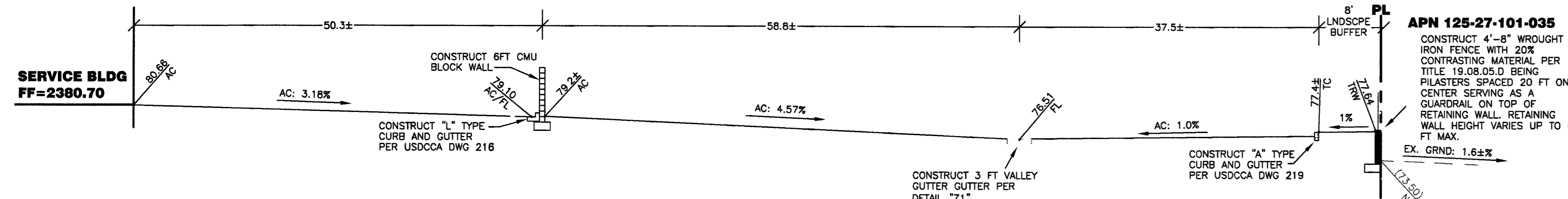


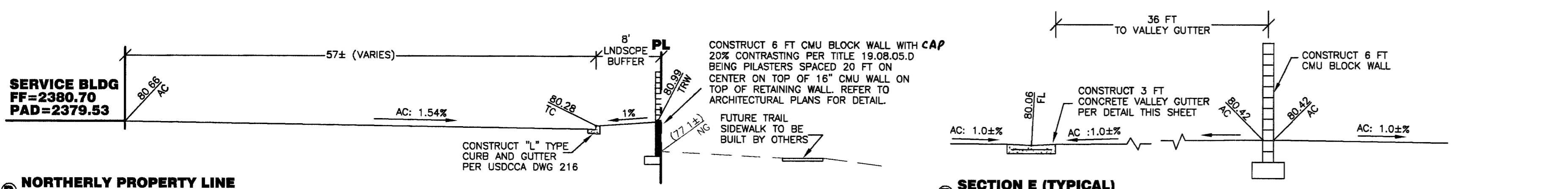
WESTERLY LIMIT OF PHASE 1
NOT TO SCALE



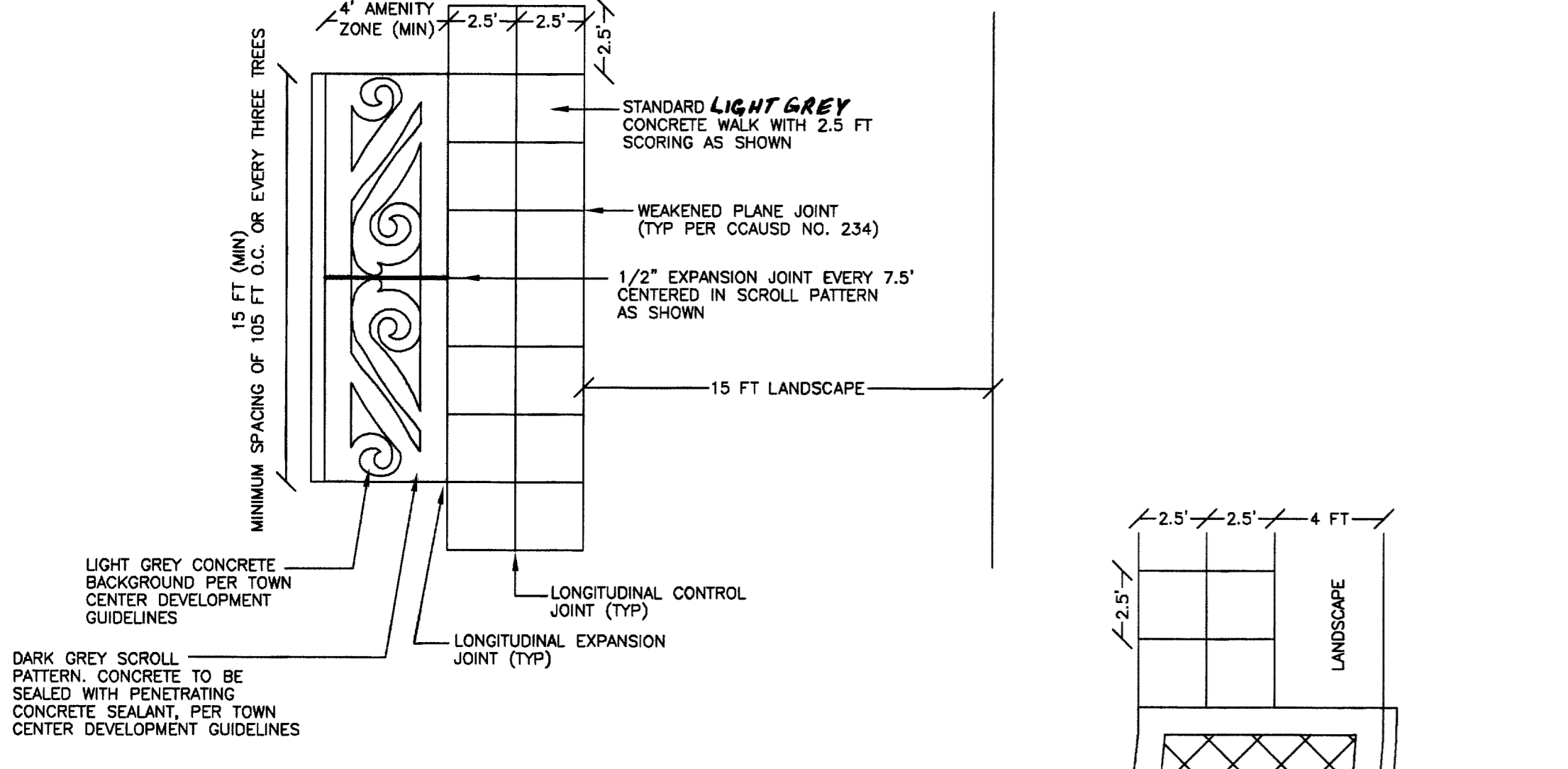
SOUTHERLY PROPERTY LINE
NOT TO SCALE



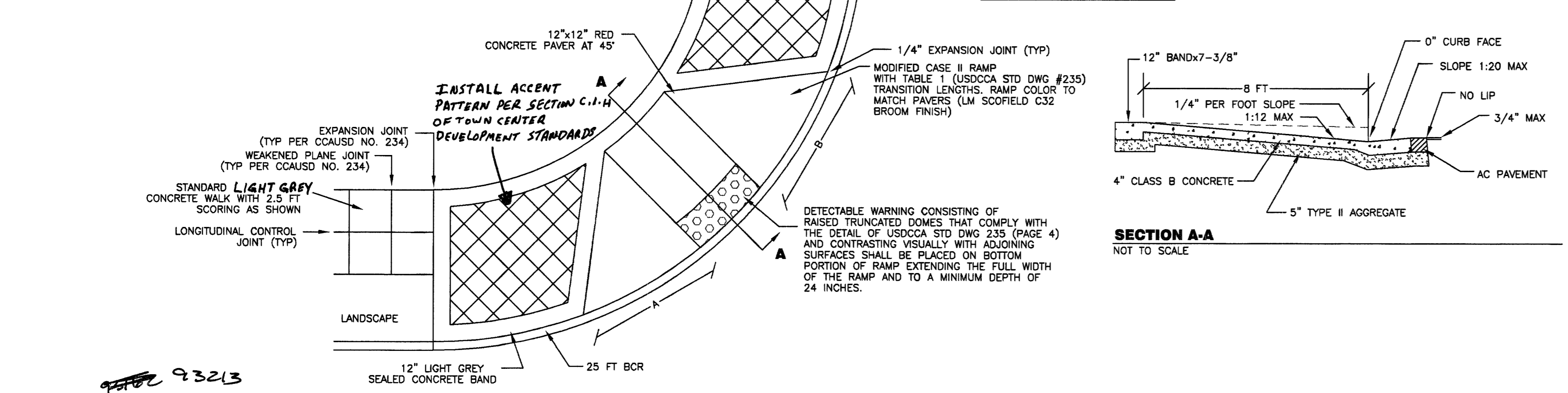
EASTERLY PROPERTY LINE
NOT TO SCALE



NORTHERLY PROPERTY LINE
NOT TO SCALE



SIDWALK SCROLL AND SCORING PATTERN (TYP)
NOT TO SCALE



CITY OF LAS VEGAS TOWN CENTER DEVELOPMENT STANDARDS HANDICAP RAMP (TYPICAL)
NOT TO SCALE

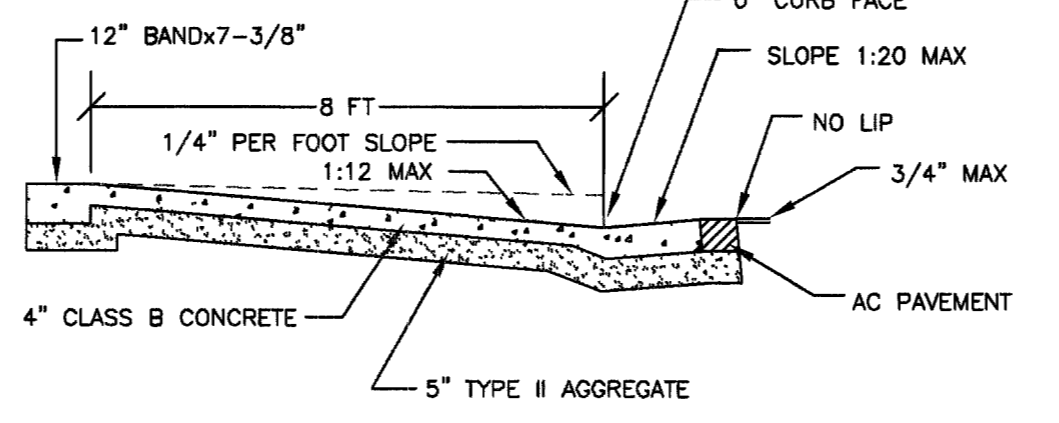
TRANSITION LENGTHS
1:12 SIDE SLOPE

'B' TO 'A' GRADE (%)	'A' (FT) (MIN)	'B' (FT) (MIN)
-6 TO -5.01	4.5	21.5
-5 TO -4.01	4.5	15.0
-4 TO -3.01	4.5	12.0
-3 TO -2.01	4.5	9.5
-2 TO 2	8.0	8.0
2.01 TO 3	9.5	4.5
3.01 TO 4	12.0	4.5
4.01 TO 5	15.0	4.5
5.01 TO 6	21.5	4.5

HANDICAP TABLE

DESC	'A'	'B'
HC1	8.00'	8.00'
HC2	4.50'	9.50'
HC3	8.00'	8.00'
HC4	4.50'	9.50'

CONSTRUCT DRIVEWAY HANDICAP RAMP PER DETAIL 25 ON SHEET C10

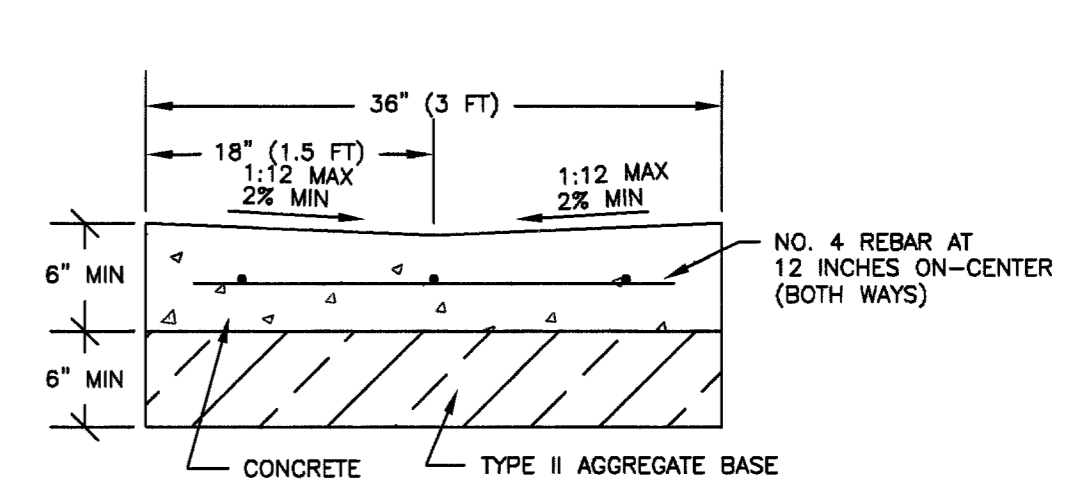


SECTION A-A
NOT TO SCALE

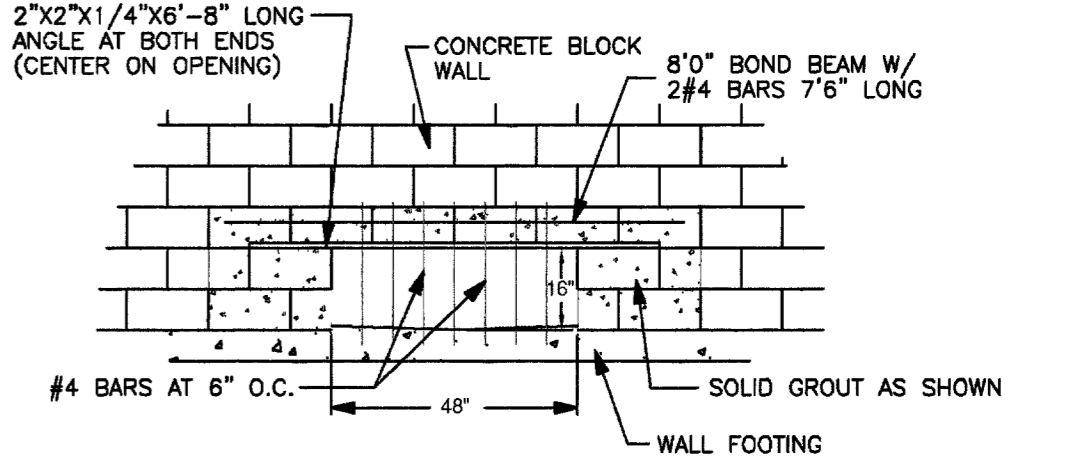
SHOWROOM
FF=2380.70
PAD=2379.53

SHOWROOM
FF=2380.70
PAD=2379.53

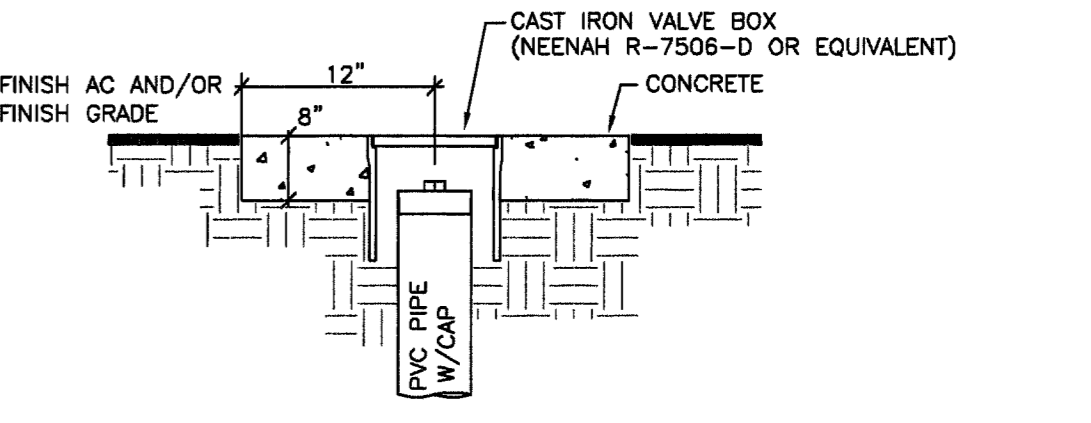
NORTHERLY PROPERTY LINE
NOT TO SCALE



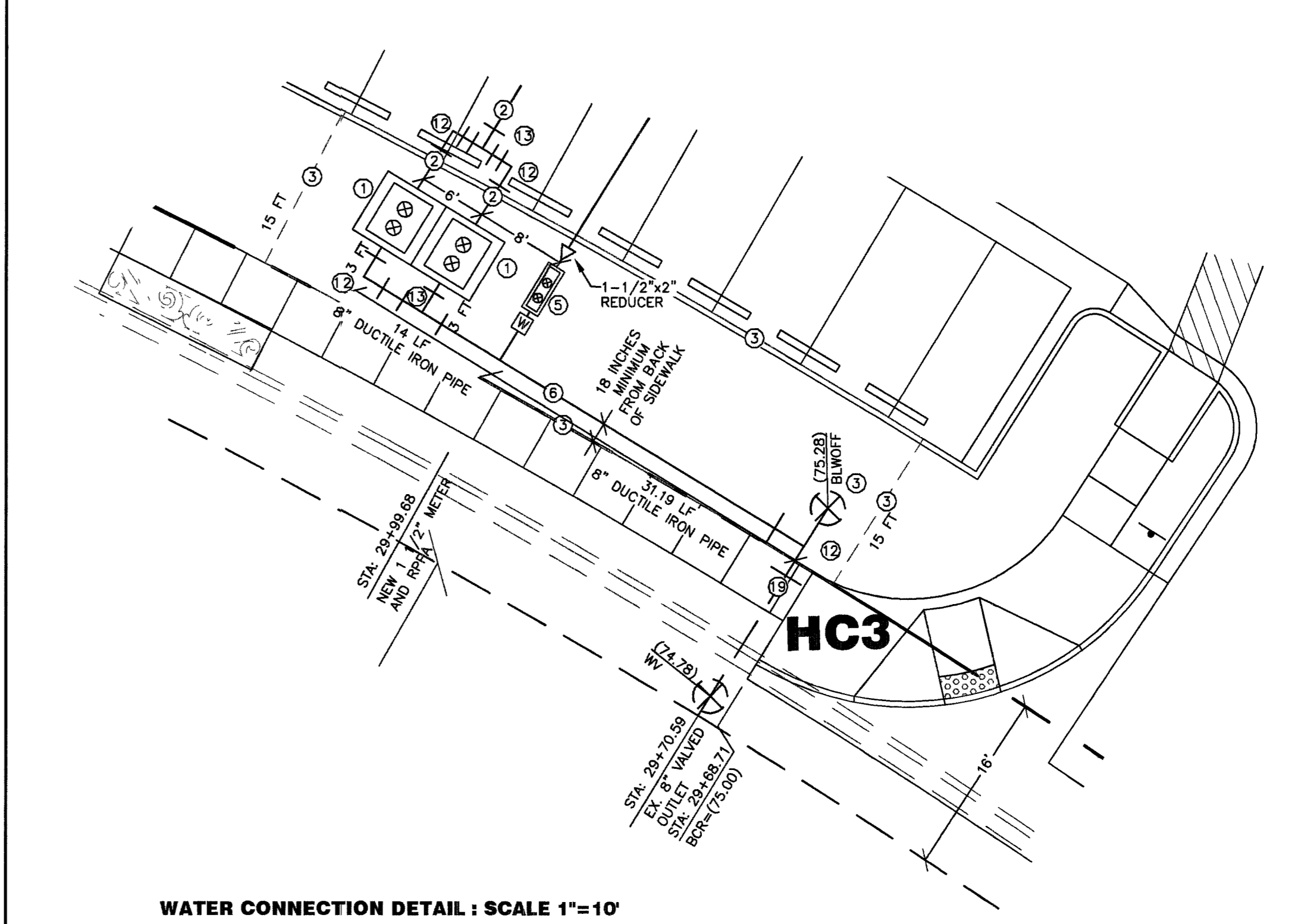
3 FT VALLEY GUTTER
NOT TO SCALE



BLOCK WALL OPENING (48\"/>



SEWER CLEAN OUT
NOT TO SCALE



WATER CONNECTION DETAIL : SCALE 1\"/>

WATER CONSTRUCTION NOTES

- INSTALL 8" DCDA PER UDACS STD PLT 11C 2 EA
 - INSTALL 8" PVC C900 WATER LINE 776 LF
 - GRANT 57"x15" WATER EASEMENT TO LVWD 1 EA
 - INSTALL 6" PVC C900 WATER LINE 215 LF
 - INSTALL 1 1/2" METER PER UDACS STD PLT 1D AND AND INSTALL 1 1/2" RPPA PER UDACS PLT 11A 1 EA
 - INSTALL 8-INCH DUCTILE IRON PIPE 52 LF
 - INSTALL 6" GATE VALVE 1 EA
 - INSTALL FIRE HYDRANT PER UDACS STD PLATE 7. HYDRANTS SHALL BE BETWEEN 4 TO 7 FEET BEHIND CURB ADJACENT TO FIRE ACCESS LANE AND A MINIMUM OF 3 FT CLEARANCE FROM THE BARREL OF THE FIRE HYDRANT TO ANY OBSTRUCTION OR PARKING STALL. 2 EA
 - INSTALL 8" 11.25' BEND W/ THRUST BLOCK PER UDACS PLT 5 1 EA
 - INSTALL 8" 22.5' BEND W/ THRUST BLOCK PER UDACS PLT 5 4 EA
 - INSTALL 8" 45' BEND W/ THRUST BLOCK PER UDACS PLT 5 3 EA
 - INSTALL 8" 90' BEND W/ THRUST BLOCK PER UDACS PLT 5 4 EA
 - INSTALL 8"x8" TEE W/ THRUST BLOCK PER UDACS PLT 5 3 EA
 - INSTALL 8"x8" REDUCER 2 EA
 - INSTALL 6"x6" TEE W/ THRUST BLOCK PER UDACS PLT 5 1 EA
 - INSTALL 6" 90' BEND W/ THRUST BLOCK PER UDACS PLT 5 1 EA
 - PROPOSED FDC ON BUILDING 1 EA
 - CONNECT TO EX. 8" VALVED OUTLET 1 EA
 - REMOVE EX. BLOWOFF ASSEMBLY PER UDACS PLT 4 (NOTE 1) 1 EA
 - INSTALL 8" GATE VALVE 2 EA
 - CURBING TO BE PAINTED WITH A SUITABLE COAT OF INDUSTRIAL GRADE ENAMEL (SAFETY RED) W/ "FIRE LANE, NO PARKING"
 - INSTALL VEHICULAR PROTECTION BOLLARD PER UDACS PLT 23 8 EA
- NOTE:** INSTALL PIPELINE MARKER BALLS IN TRENCH ABOVE EACH HORIZONTAL ELBOW FITTING, PER UDACS PLATE NO. 27

APPROVED FOR CONSTRUCTION

BY: _____ DATE: _____

LAS VEGAS VALLEY WATER DISTRICT
(SHEETS 1 2 7 AND 10 - PROJECT #112554)

AVOID CUTTING UNDERGROUND UTILITY LINES. IT'S COSTLY.
Call before you Dig.
1-800-227-2600
(48 hrs. Advance Notice Required)

AVOID OVERHEAD POWER LINE CONTACT. IT'S COSTLY.
Call before you OVERHEAD
1-702-227-2929
NEVADA POWER ENVIRONMENT AND SAFETY SERVICES DEPARTMENT

HAMILTON ENGINEERS
3945 Pebble Creek Avenue
Las Vegas, Nevada 89147
Ph: (702) 580-3658
Fax: (702) 247-4507
John@HamiltonCivilEngineers.com

DETAILS / SECTIONS
NAME OF PROJECT: **FINDLAY-SHACK HONDA**
APN 125-27-101-036
GOVERNING ENTITY: CITY OF LAS VEGAS, NEVADA
ASSESSOR PARCEL NUMBER: APN 125-27-101-036

HAMILTON CIVIL ENGINEERS
ENGINEER'S SEAL
JULIA R. HAMILTON
Exp 06/30/2007
No. 015732

SHEET ID: **C10**
10 OF 11 SHEETS
GOVERNING ENTITY REF NO: 107V4632

DEVELOPER: BEYON CONSTRUCTION
5685 SOUTH CAMERON
LAS VEGAS, NV 89118
PH: (702) 576-5800
FAX: (702) 251-0534
steve@beyondmg.com

PROPERTY OWNER: CLIFF AND DONNA FINDLAY TRUST
1908.05.D BEING PILASTERS SPACED 20 FT ON TOP OF RETAINING WALL. REFER TO ARCHITECTURAL PLANS FOR DETAIL.
CONTACT: TYLER CORBER, CHIEF FINANCIAL OFFICER
EMAIL: tcorber@findlayshack.com